

OWNER:

BODDIE-NOELL ENTERPRISES, INC.
 P.O. BOX 908
 ROCKY MOUNT, N.C. 27802-1908
 (252) 937-2800

REVISIONS

NO.	DESCRIPTION	DATE

MECHANICAL DETAILS

DATE: 6-23-17

SHEET NUMBER: **M-2**

ROOF TOP UNIT SCHEDULE - PROVIDED BY OWNER (UNO)

MARK	MFG/MODEL NO.	NOMINAL CAP. (TONS)	CFM	SEER/COEF	ESP. SP. (IN.W.C.)		FAN RPH	MOTOR HP	COOLING CAPACITY			AMB. TEMP (°F)	W/BGT LBS.	ELEC HEAT @208	CONTROL STAGES	ELECTRICAL			
					TOT. SP.	INLET			SENS. MEH	ENT. DB (°F)	ENT. WB (°F)					FLA	MCA	MOCOP	V/PH
RTU-1	TRANE WSD150	12.5	4,500	10.6/3.2	0.61	0.82	833	3	147.6	98.7	82.1	68.6	2378#	40.6 KW	2	174.5	209.0	225.0	208/3
RTU-2	TRANE WSC060	5	1,600	12/3.5	0.63	0.78	921	1	39.6	42.4	83.2	89.5	944#	13.1 KW	2	63.0	77.0	80.0	208/3
RTU-3	TRANE WSC060	5	1,600	12/3.5	0.57	0.72	896	1	39.1	39.4	80.5	89.1	944#	13.1 KW	2	63.0	77.0	80.0	208/3

NOTES:

- DOWN FLOW ECONOMIZER W/ BAROMETRIC RELIEF FOR ALL ROOF TOP UNITS.
- PREPAB RTU CURB FURNISHED WITH UNIT INSULATED BY CONTRACTOR.
- ALL ROOFTOP UNITS ARE TO BE PROVIDED BY OWNER.
- STARTUP CHECK TEST AND SYSTEM AIR BALANCE SERVICE TO BE PERFORMED BY MECHANICAL CONTRACTOR.
- AIR VOLUME BASED ON RESTAURANT ELEVATION OF 800 FT ABOVE SEA LEVEL.
- HINGED PANELS AND FAN FILTERS.
- FACTORY 115V GFI RECEPTACLE (FIELD WIRED)
- 6-10 YR COMPRESSOR WARRANTY.
- THROUGH THE ROOF ELECTRICAL.
- MANUFACTURER PROVIDED CIRCUIT BREAKER.
- MANUFACTURER PROVIDED FROST STAT.
- PROVIDE BLA G EPOXY FROST-SEALED COILS.
- FLA INCLUDES ALK. ELEC HEAT.
- ROOFTOP UNITS ARE ELECTRICALLY INTERLOCKED WITH HOODS THRU BUILDING CONTROL PANEL.

AIR BALANCE SCHEDULE

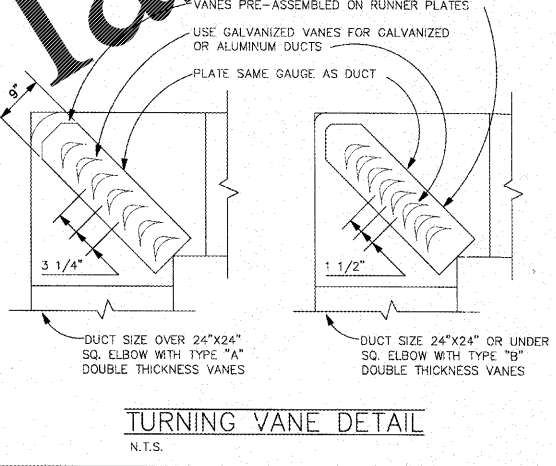
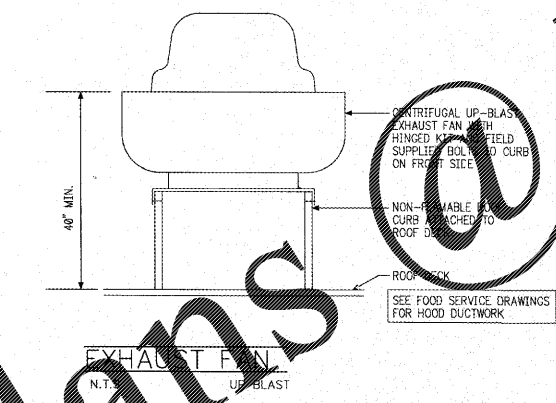
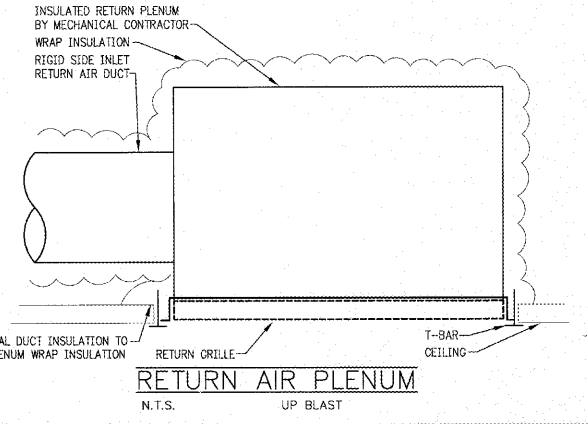
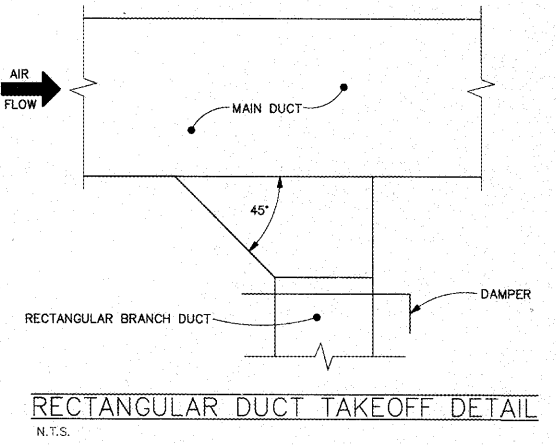
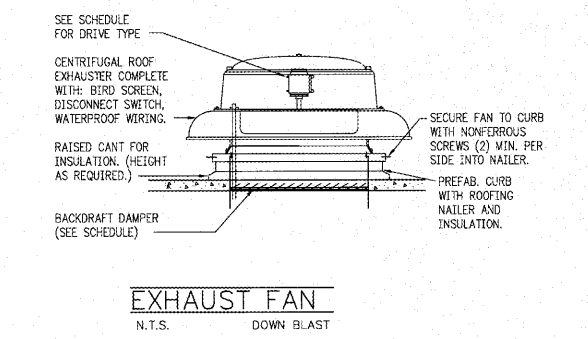
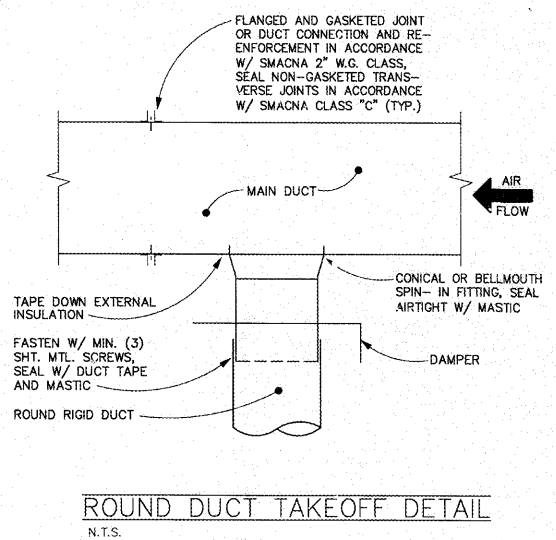
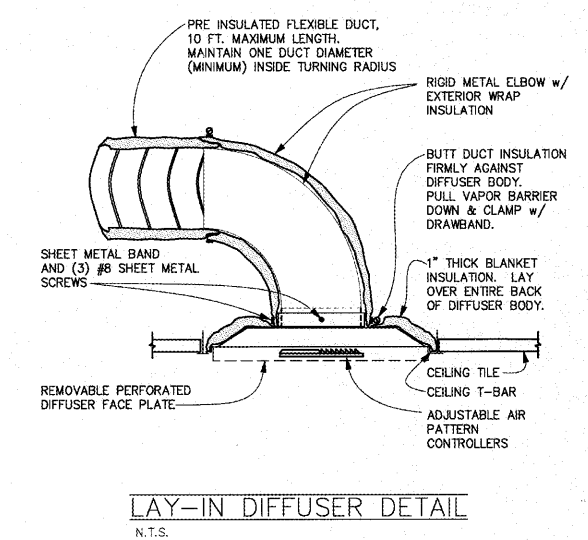
UNIT	SUPPLY	RETURN	OUTSIDE	EXHAUST	SERVING
RTU-1	4,500	2,300	1,200		KITCHEN
RTU-2	1,600	1,060	540		SERV & ORDER
RTU-3	1,600	1,060	540		DINING
SF-1			2133		
EF-1				977	OVEN HOOD
EF-2				660	PREP HOOD
EF-3				1,989	SERVER HOOD
EF-4				350	W/ SWOMEN'S REST
TOTAL	7,700	5,420	4,413	3,976	437 TO MAKE AIR FLOW

GRILLE AND DIFFUSER SCHEDULE

MARK	AIR GUIDE	FACE SIZE	GRID SIZE	TYPE	MOUNTING	MATERIAL FINISH
SD-1	AVR-PL	24"x24"	PER PLAN	SUPPLY	T-BAR	ALUM/WHITE
SD-2	PS-1	24"x24"	PER PLAN	SUPPLY	T-BAR	ALUM/WHITE
SD-3						
SD-4	AVR-PL	12"x12"	PER PLAN	SUPPLY	SURFACE	ALUM/WHITE
SD-5	RA-PL	24"x24"	PER PLAN	SUPPLY	T-BAR	ALUM/WHITE
SF-1	PH-PLT	24"x24"	PER PLAN	SUPPLY	T-BAR	ALUM/WHITE
SF-2	VH	18"x6"	PER PLAN	SUPPLY	WALL MTD	ALUM/WHITE
RE-1	RR-1	18" RND	PER PLAN	RETURN	T-BAR	ALUM/WHITE
RE-2	RR-AG	18" RND	PER PLAN	RETURN/EXHAUST	SURFACE	ALUM/WHITE

NOTES:

- TRANSITION TO DUCT AS REQUIRED.
- PROVIDE OFFSET BLADE DAMPERS (OBB) FOR GRILLES AND DIFFUSERS INSTALLED WITHIN SWEETHOOK CEILING.
- NOT ALL DEVICES MAY BE USED.
- ALL "B" DIFFUSERS WITHIN 10' OF A HOOD SHALL HAVE THEIR AIR PATTERN REMOVED GRAINED IN A DIRECTION VOID OF A HOOD.



NOTE: SEE SHEETS CPI-1.0 THRU CPI-2.2 FOR CPI INFORMATION RELATED TO WIRING OF CONTROLS & ENERGY MANAGEMENT.

Order Plans

WWW.LDLINE.COM