

national
architectural
designers
engineers

ARCATECH ASSOCIATES, P.A.
3305 GREENING MILL RD. SUITE 305
MORRISVILLE, NORTH CAROLINA 27560
PH: 919 544 7257 FAX: 919 544 9399
A Division of Luff Associates

ASSOCIATES, P.A.
CORPORATION
CERT. NO. 178
LIGHT

REGISTERED PROFESSIONAL ENGINEER
NO. 3177
REGISTERED PROFESSIONAL ARCHITECT
NO. 3177

Star-Hardee
CORPORATION
HARDEE'S REVERSE PROTOTYPE
BIRMGHAM, AL 35242

OWNER:
BOODIE NOELL
ENTERPRISES, INC.
P.O. BOX 908
ROCKY MOUNT, NC
27802-1908
(252) 937-2800

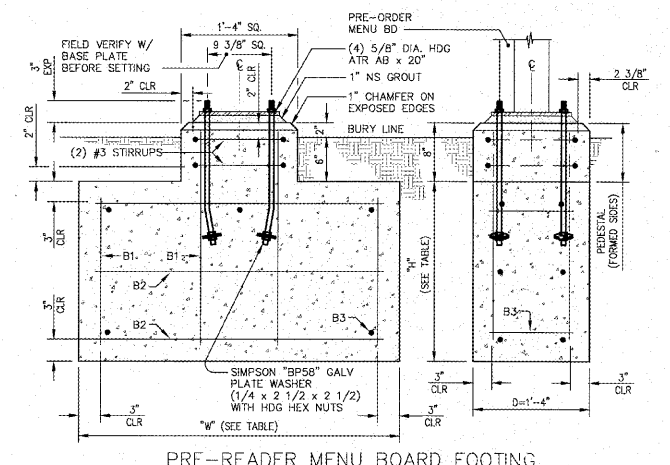
NO.	DATE	DESCRIPTION

DRAWN BY: _____ CHECKED BY: _____

DRIVE-THRU DETAILS

DATE: 6-23-17

SHEET NUMBER:
A-8.1

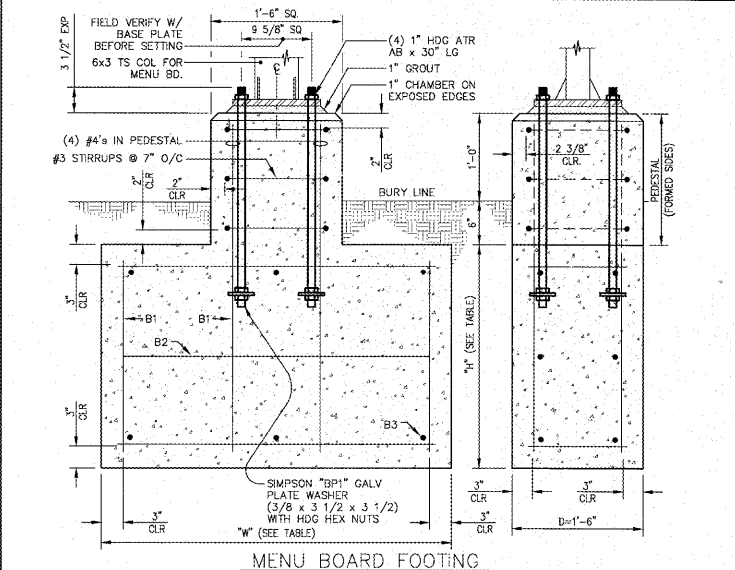


KEY TO PRE-READER MENU BOARD FOUNDATION SIZE AND REINFORCING

DESIGN WIND SPEED/EXPOSURE (MPH)	FACTORED PRESSURE (PSF)	W (FT)	H (FT)	BURY DEPTH D (FT) (H+6")	B1 (VERT)	B2 (HOR)	B3 (TIES)
150/D	112.1	4.0	2.5	3.0	4#4's	3#4's	4#3's
140/D	97.6	3.5	2.5	3.0	4#4's	3#4's	3#3's
130/D	84.2	3.0	2.5	3.0	3#4's	3#4's	3#3's
120/C	54.7	2.5	2.5	3.0	3#4's	3#4's	3#3's
110/C	46	2.5	2.0	2.5	3#4's	2#4's	3#3's
100/C	38	2.5	2.0	2.5	3#4's	2#4's	3#3's
90/C	30.8	2.0	2.0	2.5	3#4's	2#4's	2#3's
80/B	14.2	2.0	1.5	2.0	3#4's	2#4's	2#3's

REFERENCE PRE-ORDER MENU BOARD & MENU BOARD GENERAL NOTES - THIS SHEET

MENU BOARD SCALE: 1/4" = 1'-0"

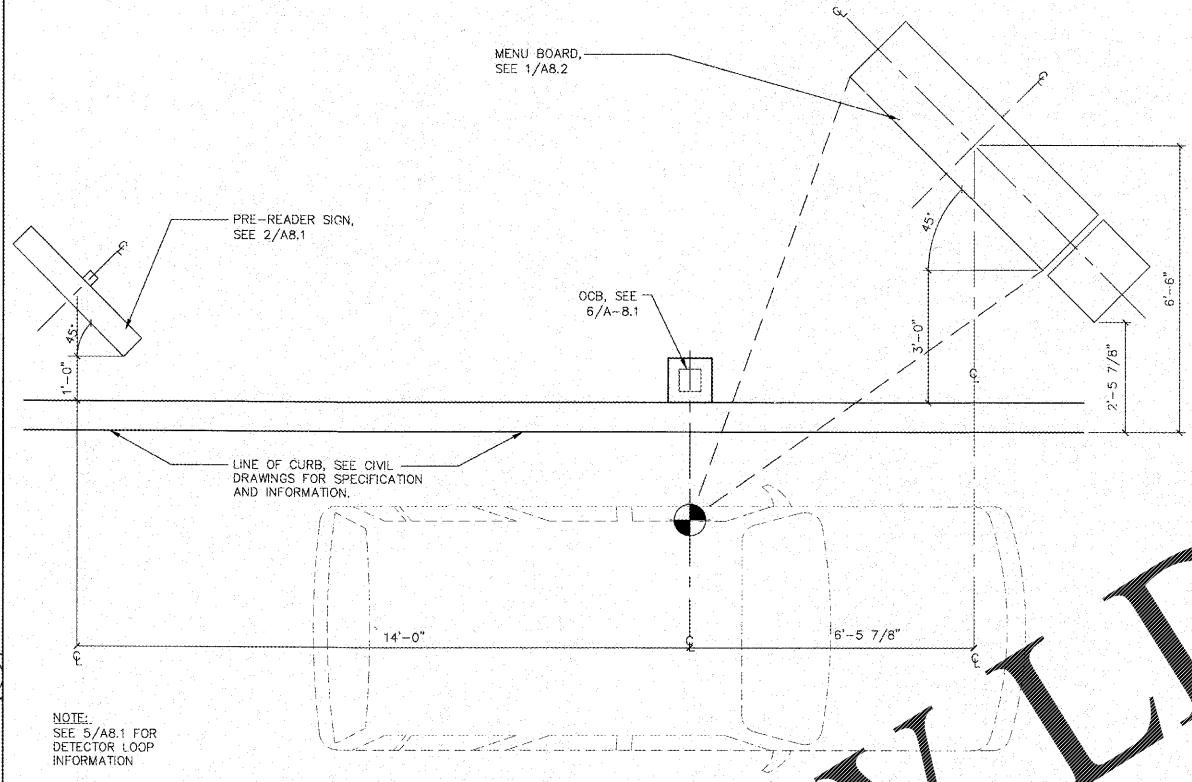


KEY TO ORDER MENU BOARD FOUNDATION SIZE AND REINFORCING

DESIGN WIND SPEED/EXPOSURE (MPH)	FACTORED PRESSURE (PSF)	W (FT)	H (FT)	BURY DEPTH D (FT) (H+6")	B1 (VERT)	B2 (HOR)	B3 (TIES)
150/D	112.1	5.0	3.5	4.0	6#4's	3#4's	4#3's
140/D	97.6	4.5	3.5	4.0	5#4's	3#4's	4#3's
130/D	84.2	4.0	3.5	4.0	5#4's	3#4's	4#3's
120/C	54.7	3.5	3.0	3.5	4#4's	3#4's	3#3's
110/C	46	3.0	3.0	3.5	4#4's	3#4's	3#3's
100/C	38	3.0	2.5	3.0	4#4's	3#4's	3#3's
90/C	30.8	2.75	2.5	3.0	3#4's	3#4's	2#3's
80/B	14.2	2.5	2.0	2.5	3#4's	2#4's	2#3's

REFERENCE PRE-ORDER MENU BOARD & MENU BOARD GENERAL NOTES - THIS SHEET

DRIVE THRU PRE-VIEW SIGN SCALE: 1/4" = 1'-0"



MENU BOARD LAYOUT - DRIVETHRU SCALE: 1/2" = 1'-0"

GENERAL

- WHERE A SECTION OR DETAIL IS SHOWN FOR ONE CONDITION, IT SHALL APPLY TO ALL LIKE AND SIMILAR CONDITIONS.
- SHOP DRAWINGS: THE CONTRACTOR SHALL COORDINATE THE CIVIL AND ELECTRICAL REQUIREMENTS WITH THE FOUNDATION PLAN/DRAWINGS INCLUDING THE LOCATION OF MISCELLANEOUS ITEMS AFFECTING THE STRUCTURAL WORK. PROMPTLY NOTIFY THE ENGINEER OF ANY DISCREPANCIES/CONFLICTS OR OMISSIONS.
- THE SHOP DRAWINGS SHALL BE REVIEWED BY THE CONTRACTOR AND SUBCONTRACTOR PRIOR TO BEING SUBMITTED TO THE ENGINEER FOR APPROVAL.
- SPECIAL INSPECTIONS: NOT REQUIRED.

FOUNDATIONS

- SOIL DESIGN BEARING VALUE - 1500 PSF (TO BE FIELD VERIFIED IF QUESTIONABLE)
- FOUNDATIONS SHALL BE PLACED ONLY ON APPROVED NATURAL UNDISTURBED SOIL STRATA OR PROPERLY PLACED ENGINEERED CONTROLLED COMPACTED FILL UNDER THE SUPERVISION OF THE GEOTECHNICAL LABORATORY.
- FOOTING EXCAVATIONS SHALL BE APPROVED BY THE PROJECT ENGINEER OR, IF SO DIRECTED, A NON-SHRINK GROUT SHALL BE IN ACCORDANCE WITH GEOTECHNICAL LABORATORY PRO TO PLACE FOOTING CONCRETE. IF PERFORMED BY A GEOTECHNICAL ENGINEER, THE GEOTECHNICAL LABORATORY/ENGINEERS SHALL PROVIDE RESULTS OF DCP TESTS TO ENGINEER FOR VERIFICATION AND RECORD.

THE CONTRACTOR SHALL TAKE ALL PRECAUTIONS NECESSARY TO PREVENT STORMWATER FROM ENTERING FOUNDATION EXCAVATIONS. ALL WATER SHALL BE REMOVED BEFORE DEPOSITING CONCRETE. CONCRETE SHALL NOT BE PLACED ON SOFT, SATURATED SOIL.

CONCRETE

- CONCRETE SHALL DEVELOP THE FOLLOWING MINIMUM COMPRESSIVE STRENGTHS AT 28 DAYS:
 - FOOTINGS - 3000 PSI
 - PEDESTALS - 3000 PSI
- CONCRETE FOR FOOTINGS/PEDESTALS, SHALL BE REGULAR STONE CONCRETE.
- ALL CONCRETE WORK SHALL CONFORM TO "BUILDING CODE REQUIREMENTS FOR REINFORCED CONCRETE," ACI 318.
- OBSERVE ALL AND STRICTLY FOLLOW ALL ACI 305 AND 306 REQUIREMENTS RESPECTIVELY FOR PROTECTION OF CONCRETE IN HOT AND COLD WEATHER.
- ALL CONCRETE WORK SHALL BE PROPERLY CURED IN CONFORMANCE WITH ACI 308.
- CHAMFER EXPOSED EDGES AND CORNERS OF CONCRETE 1" UNLESS OTHERWISE NOTED.
- THE SLUMP OF CAST-IN-PLACE CONCRETE SHALL NOT EXCEED 4 INCHES WITHOUT A HIGH RANGE WATER REDUCING ADMIXTURE. THE SLUMP OF CAST-IN-PLACE CONCRETE WITH THE USE OF A HIGH RANGE WATER REDUCING ADMIXTURE SHALL NOT EXCEED 8 INCHES. ALL CONCRETE EXPOSED TO WEATHER SHALL BE AIR-ENTRAINED 5% (TO MAXIMUM OF 7%). ENTRAPPED AIR SHALL NOT EXCEED 3%.
- STEEL CLEARANCES: SEE REINFORCING STEEL, ITEM 4.

REINFORCED STEEL

- BARS SHALL BE ROLLED FROM NEW BILLET-STEEL CONFORMING TO "SPECIFICATION FOR DEFORMED BILLET-STEEL BARS FOR CONCRETE REINFORCEMENT," ASTM A615, GRADE 60.
- DETAIL AND FABRICATE REINFORCING IN ACCORDANCE WITH "MANUAL OF STANDARD PRACTICES FOR DETAILING REINFORCED CONCRETE STRUCTURES," A.C.I. 318.
- REINFORCING SHALL BE IN PLACE AND REVIEWED BY THE PROJECT ENGINEER PRIOR TO PLACING CONCRETE.
- UNLESS OTHERWISE NOTED ON THE DRAWINGS REBAR SHALL HAVE THE FOLLOWING MINIMUM CLEARANCES FROM THE FACE OF CONCRETE:
 - FOOTINGS - WITH EARTH EXPOSED; 2" WITH REMOVABLE FORMWORK
 - PEDESTALS - 2" TYPICAL
- SUBMIT SHOP DRAWINGS FOR APPROVAL PRIOR TO FABRICATION.

GROUT

PROVIDE NON-SHRINK, NON-METALLIC PRE-MIXED GROUT UNDER ALL COLUMN BASE PLATES. GROUT SHALL HAVE A COMPRESSIVE STRENGTH OF 7,000 PSI @ 7 DAYS. NON-SHRINK GROUT SHALL BE IN ACCORDANCE WITH ASTM C-621 SPECIFICATIONS, AND SHALL BE NON-CORROSIVE, NON-STAINING AND NON-METALLIC, PREMIXED PRODUCT.

DESIGN CRITERIA AND GOVERNING NOTES:

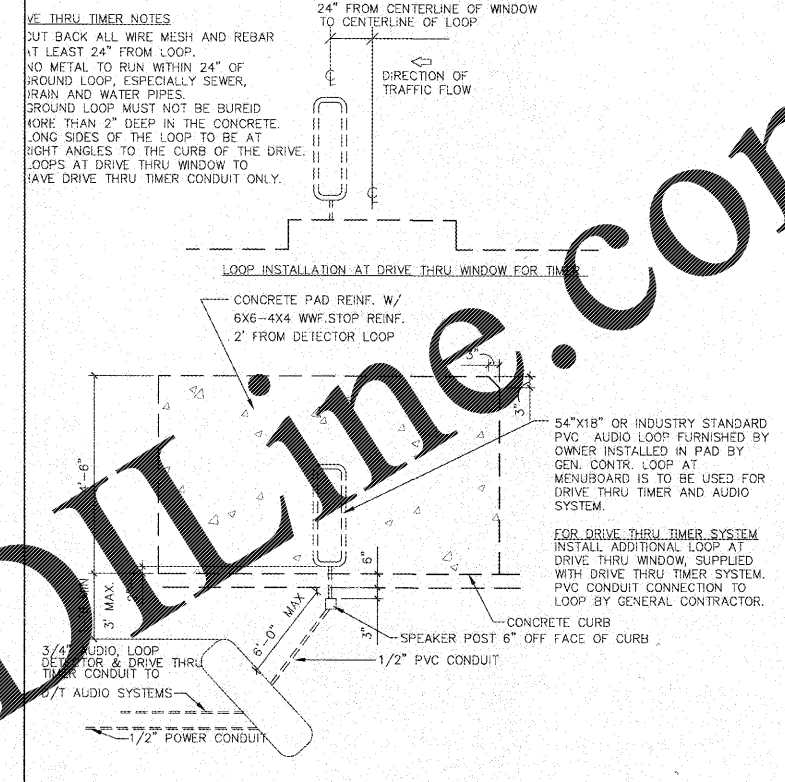
- CONFORM TO THE REQUIREMENTS OF LATEST STATE AND LOCAL CODES, AS APPLICABLE.
- 2010 EDITION OF THE AMERICAN SOCIETY OF CIVIL ENGINEERS (ASCE 7-10), "MINIMUM LOADS FOR BUILDINGS AND OTHER STRUCTURES."
- THIRTEENTH EDITION OF THE AMERICAN INSTITUTE OF STEEL CONSTRUCTION (AISC), "STEEL CONSTRUCTION MANUAL."
- LATEST EDITION OF THE AMERICAN CONCRETE INSTITUTE (ACI 318), "BUILDING CODE REQUIREMENTS FOR STRUCTURAL CONCRETE."
- LATEST EDITION OF THE AMERICAN STANDARDS OF TESTING OF MATERIALS (ASTM), "STANDARDS IN BUILDING CODES", VOLUME I AND II.
- LATEST EDITION OF THE AMERICAN WELDING SOCIETY (AWS), "STRUCTURAL WELDING CODE".
- LATEST EDITION OF THE OCCUPATIONAL SAFETY AND HEALTH ADMINISTRATION (OSHA) STANDARDS.

DIMENSIONS

- THE CONTRACTOR SHALL BE RESPONSIBLE FOR REVIEWING ALL DIMENSIONS IN THE DRAWINGS AND ADVISING THE ENGINEER OF ANY DIFFERENCES IN THE DIMENSIONS ON THE DRAWINGS PRIOR TO COMMENCING CONSTRUCTION.
- FIELD VERIFY THE BASE PLATE TEMPLATE DIMENSIONS BEFORE SETTING ANCHOR BOLTS.

EXISTING CONDITIONS

- THE CONTRACTOR SHALL BE RESPONSIBLE FOR REVIEWING ALL EXISTING JOB CONDITIONS. ANY ADVERSE EXISTING CONDITIONS AFFECTING WORK SHOWN ON THESE DRAWINGS SHALL BE BROUGHT TO THE ATTENTION OF THE ENGINEER FOR POSSIBLE CLARIFICATION OF RECONCILIATION.



DETECTOR LOOP SCHEMATIC SCALE: 1/2" = 1'-0"

GENERAL

- THESE DRAWINGS SHALL CONTAIN THE REQUIREMENTS FOR JOB SAFETY. ANY PROVISIONS FOR SAFETY SHALL BE THE SOLE RESPONSIBILITY OF THE CONTRACTOR.

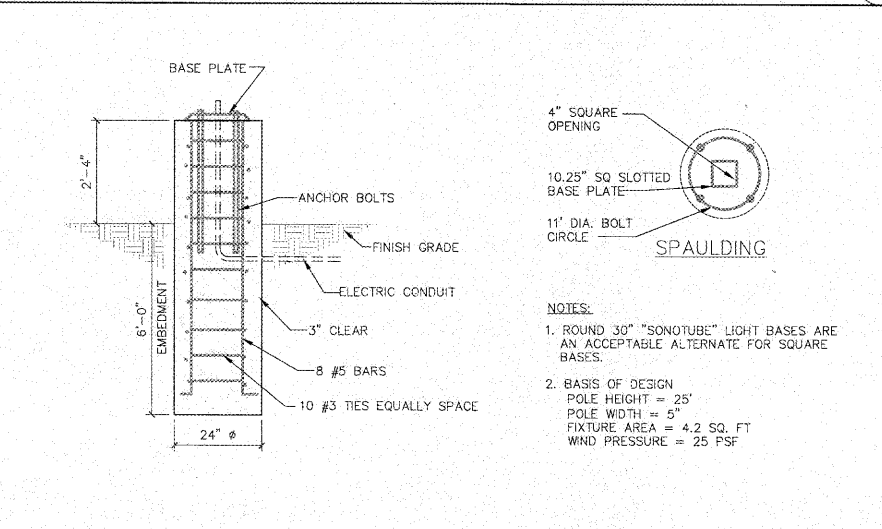
CONSTRUCTION

- THESE DRAWINGS SHALL CONTAIN THE REQUIREMENTS FOR JOB SAFETY. ANY PROVISIONS FOR SAFETY SHALL BE THE SOLE RESPONSIBILITY OF THE CONTRACTOR.

NOTES:

- LIGHT FIXTURE(S) ARE TO ILLUMINATE SITE & DRIVES WITH NO SPILLAGE ON ADJACENT PROPERTIES. THIS WORK SHALL BE THE RESPONSIBILITY OF THE INSTALLING CONTRACTOR. ALL PARKING LOT LIGHTS ARE TO BE AIMED AND FOCUSED AFTER DARK BY THE ELECTRICAL SUB-CONTRACTOR WITH THE OWNER AND JOB SUPERINTENDENT PRESENT.
- SEE CIVIL AND ELECTRICAL DRAWINGS FOR LIGHT LOCATIONS.
- SEE DETAIL B/A-8.2 FOR YARD LIGHT FOUNDATIONS.
- LIGHT FIXTURES, POLES, BRACKETS, BASE PLATES, AND 4 ANCHOR BOLTS AND 8 NUTS AND WASHERS PER POLE SUPPLIED BY OWNER. INSTALLED BY CONTRACTOR. ANCHOR BOLTS ARE AVAILABLE TO BE SHIPPED AHEAD.
- THE ELECTRICAL SUB-CONTRACTOR IS TO INSTALL SITE LIGHT POLES ON LEVELING NUTS WITH FLAT WASHERS ON TOP OF LEVELING NUTS. FLAT WASHERS AND LOCK WASHERS WILL ALSO BE USED UNDER THE LOCK NUTS. THE ANCHOR BOLTS WILL NOT EXTEND MORE THAN 1" ABOVE LOCK NUTS. THE TOPS OF BASES ARE TO BE GROUTED AND CROWNED WITH NON-SHRINKING GROUT TO THE BOTTOM OF THE POLE BASE PLATES WITH A 1/4" DIAMETER WEEP HOLE.

YARDLIGHT ELEVATION FOR REFERENCE ONLY. REFER TO CIVIL DRAWINGS FOR ACTUAL CONDITIONS & SPECIFICATIONS SCALE: N.T.S.



YARDLIGHT FOOTING DETAIL FOR REFERENCE ONLY. REFER TO CIVIL DRAWINGS FOR ACTUAL CONDITIONS & SPECIFICATIONS SCALE: 1/2" = 1'-0"

Order Plans

PRE-ORDER MENU BOARD AND MENU BOARD GENERAL NOTES SCALE: N.T.S.

YARDLIGHT FOOTING DETAIL FOR REFERENCE ONLY. REFER TO CIVIL DRAWINGS FOR ACTUAL CONDITIONS & SPECIFICATIONS SCALE: 1/2" = 1'-0"