

LD Line national restaurant designers
 ARCHITECTS & ENGINEERS
 1005 CANNONWOOD MIL. RD. SUITE 105
 MORRISVILLE, NORTH CAROLINA 27563
 PH: 919.544.7231 FAX: 919.944.9398
 A Division of L.H.M.T. Associates

ASSOCIATES P.A.
 ARCHITECTURAL CORPORATION
 CERT. NO. 178
 1717
 3177
 1717

Starbuck's
 HARDEE'S REVERSE PROTOTYPE
 BIRMGHAM, AL. 35203

BODDIE-NOELL ENTERPRISES, INC.
 P.O. BOX 1908
 ROCKY MOUNT, N.C.
 27802-1908
 (252) 937-2800

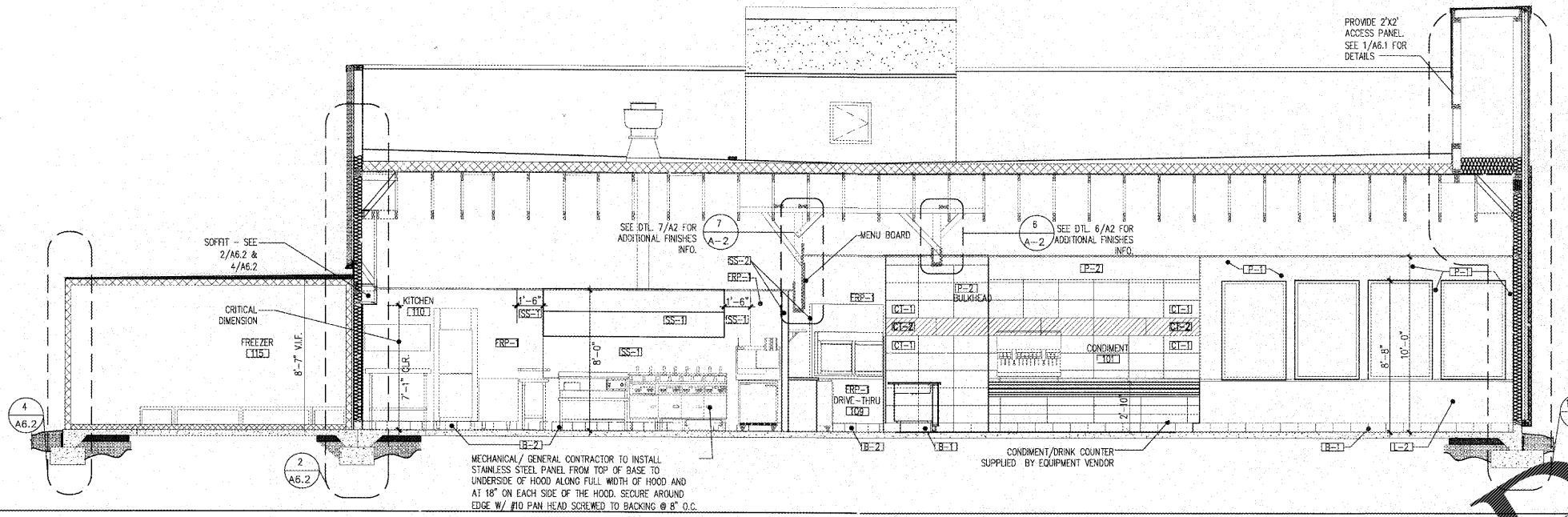
OWNER:

NO.	REVISIONS	DATE
	DESCRIPTION	

INTERIOR ELEVATIONS / SECTIONS

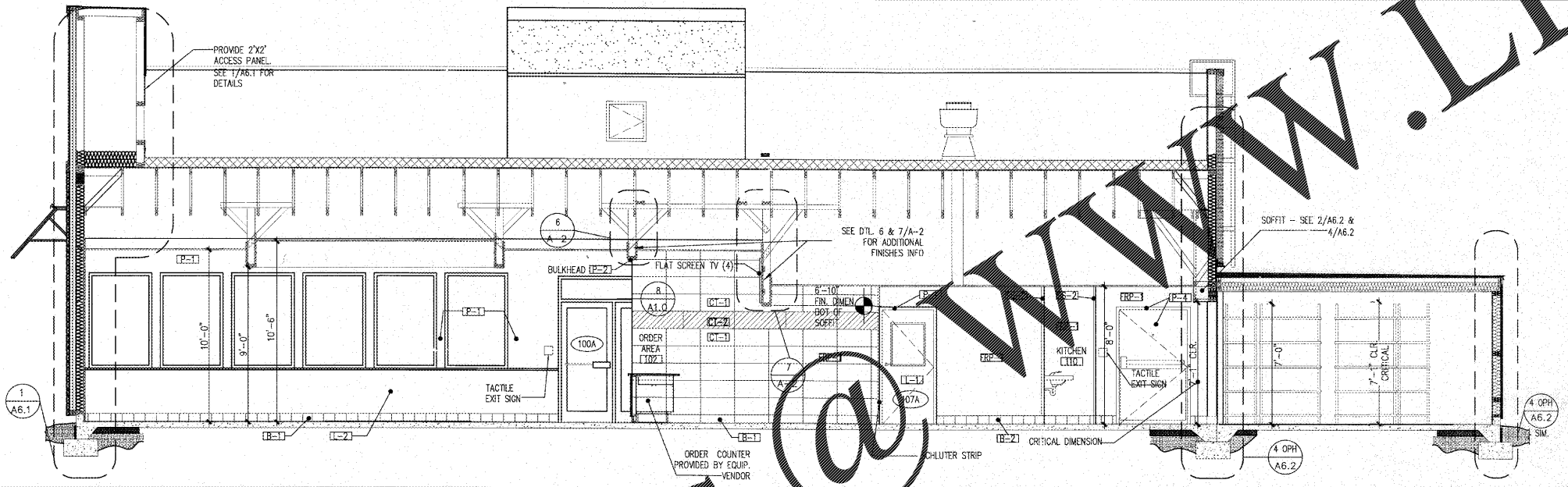
DATE: 6-23-17

SHEET NUMBER: **A-5.1**



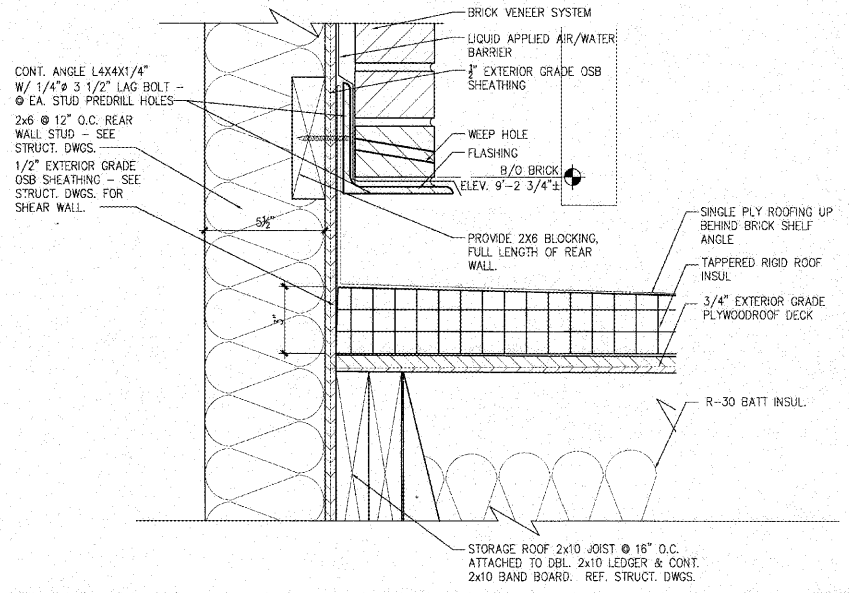
INTERIOR ELEVATION / BLDG. SECTION

SCALE: 1'-0" 1



INTERIOR ELEVATION / BLDG. SECTION

SCALE: 1/4" = 1'-0" 2



BRICK SUPPORT ANGLE • REAR WALL

SCALE: 3" = 1'-0" 4

NOTES

GENERAL NOTES:

- REFER TO SHEET A1.1 FOR INTERIOR FINISHES & LOCATION MARKERS.
- REFER TO SHEET Q100 FOR EQUIPMENT INFORMATION.

Order Plans