

MR
 ARCHITECTS & ENGINEERS
 1000 W. BROADWAY, SUITE 1005
 HOUSTON, TEXAS 77002-7745
 PH: 819 544 7251 FAX: 819 544 8399
 A DIVISION OF LMFT ASSOCIATES

LMFT ASSOCIATES P.A.
 REGISTERED PROFESSIONAL ARCHITECT
 REGISTERED PROFESSIONAL ENGINEER
 1117
 1717

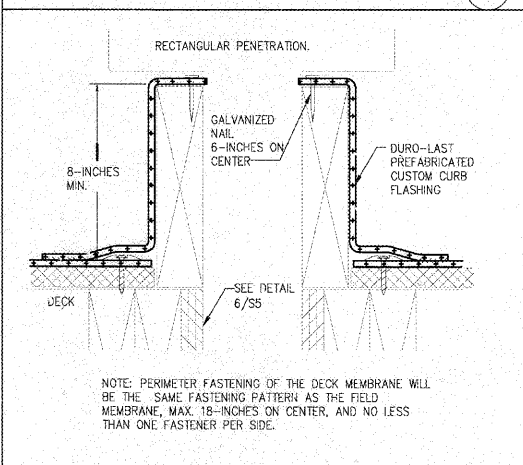
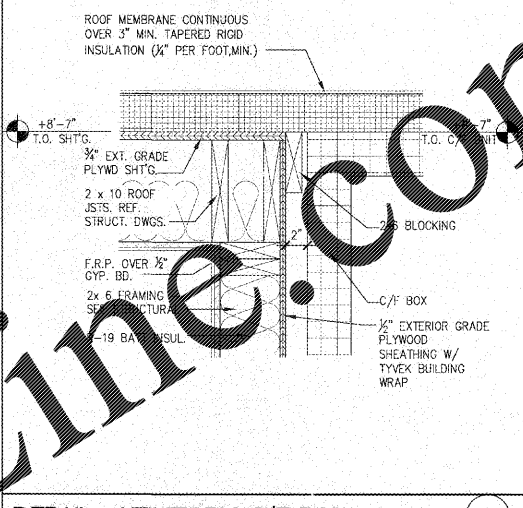
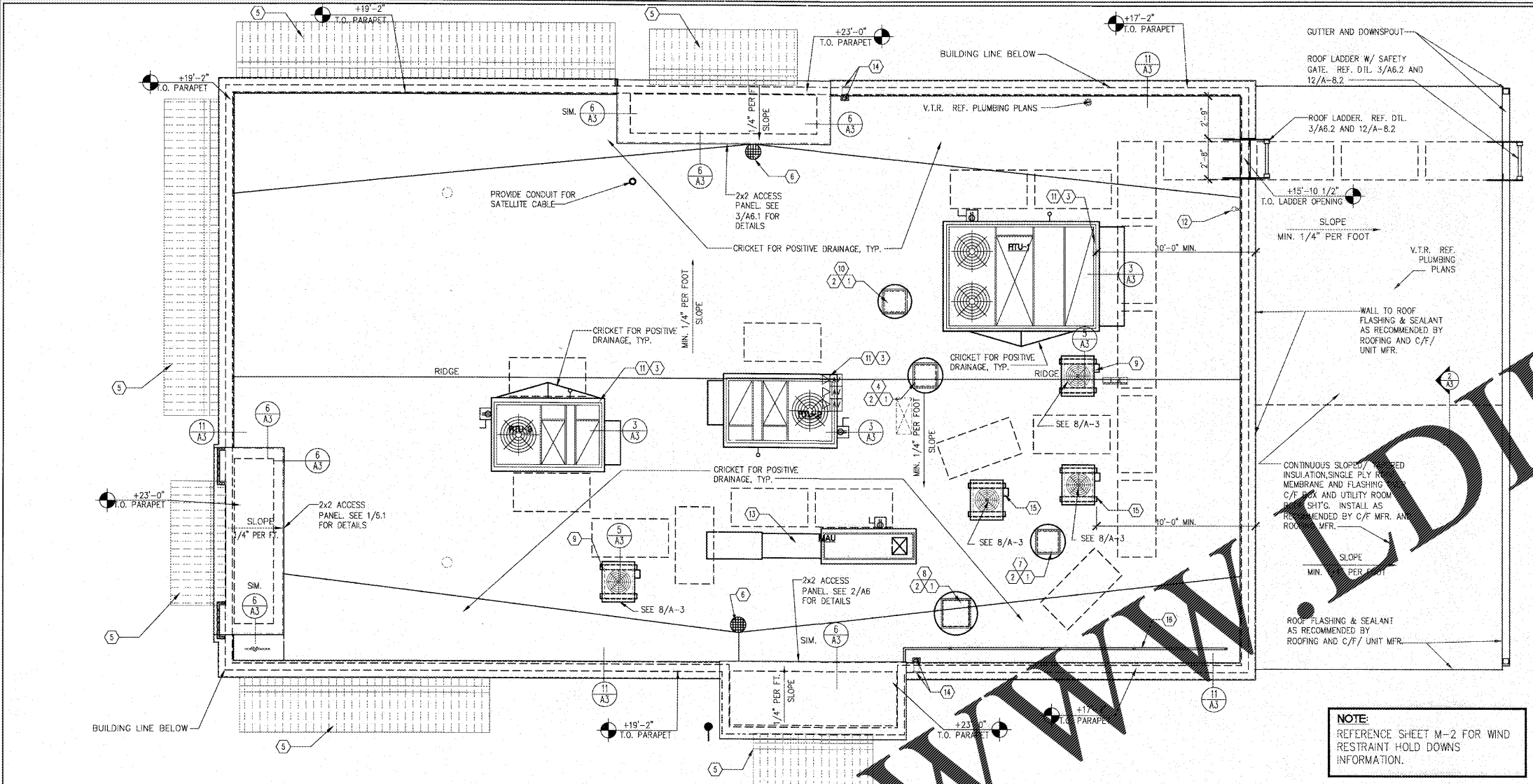
Star-Hardee
 HARDEE'S REVERSE PROTOTYPE
 DURABLE TECHNOLOGY
 525 US-17
 BURGESS, NC 28625

BODDIE-NOELL ENTERPRISES, INC.
 P.O. BOX 908
 ROCKY MOUNT, N.C.
 27802-1908
 (252) 937-2800

OWNER: B3

NO.	DATE	DESCRIPTION

ROOF PLAN
 DATE: 6-23-17
 SHEET NUMBER: **A-3.0**



NOTE:
 REFERENCE SHEET M-2 FOR WIND RESTRAINT HOLD DOWNS INFORMATION.

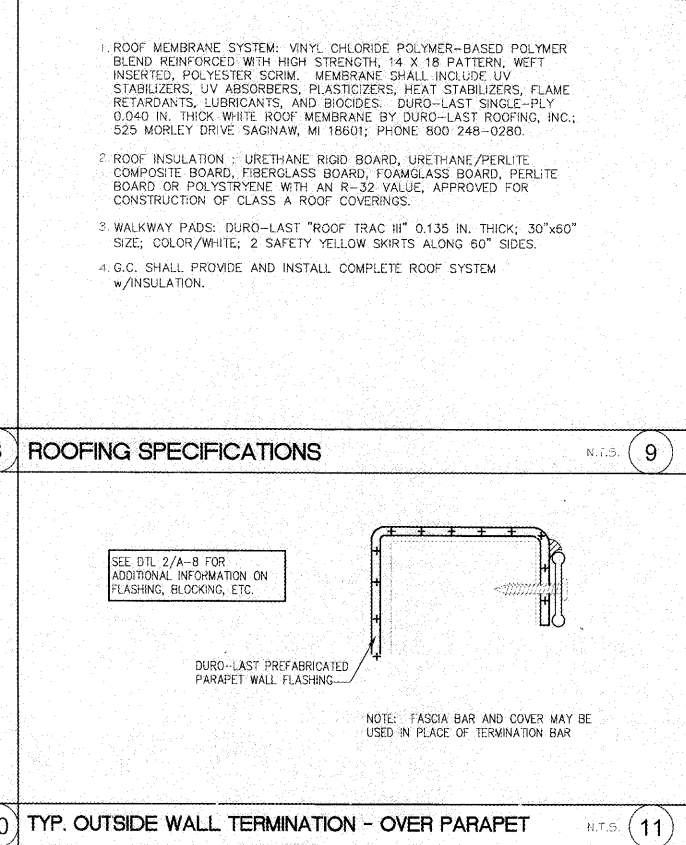
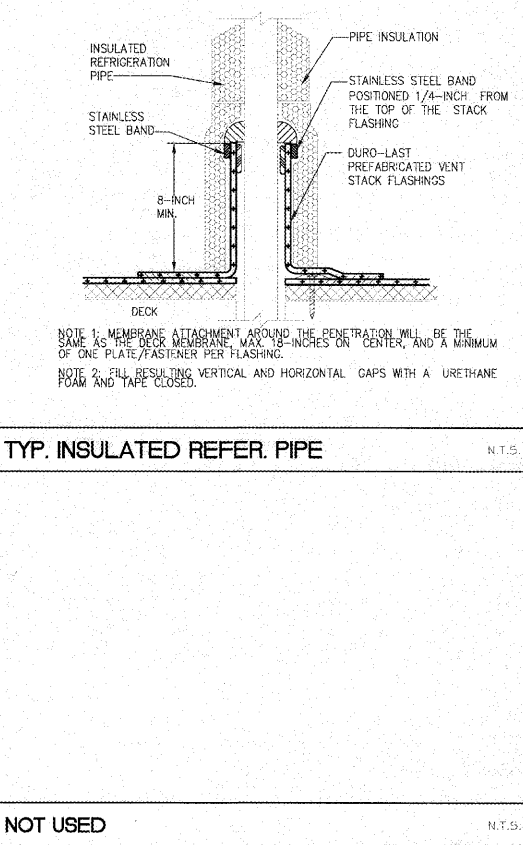
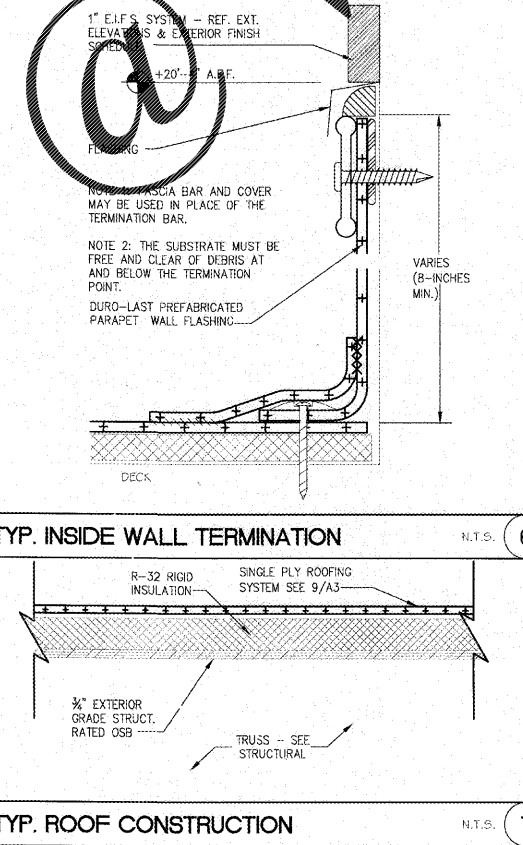
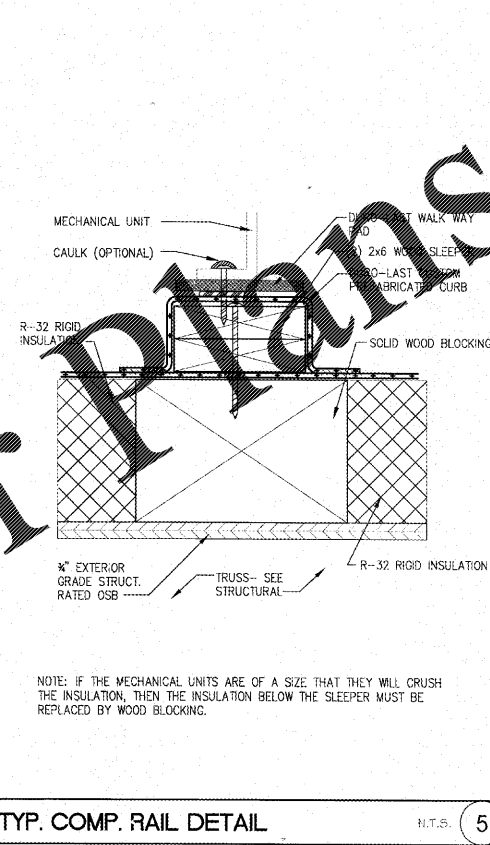
SCALE: 1/4" = 1'-0" 1

TYP. RECTANG. PENETRATION N.T.S. 3

ROOF PLAN

- GENERAL NOTES**
- THIS PLAN IS DRAWN FOR A TRANE HVAC SYSTEM. COORDINATE ALL ROOF OPENINGS W/HVAC CONTRACTOR. PROVIDE CONTINUOUS SHIMS TO LEVEL.
 - MIN. ROOF SLOPE SHALL BE 1/4" PER 1'-0".
- MINIMUM ROOF AND WALL DESIGN LOADS:
 A. SEE STRUCTURAL SHEETS FOR ALL LOADING AND WIND SPEED INFORMATION.
 B. EQUIPMENT LOADS FOR ROOF MOUNTED EQUIPMENT NOT SHOWN SEE DWG. M-1.

- KEY NOTES**
- PROVIDE 2 - 2x8 BLOCKING AROUND ALL ROOF DECK OPENINGS & UNDER ROOF CURBS, ROOF DRAINS, ETC. - SEE STRUCTURAL DRAWINGS.
 - CONTRACTOR SHALL COORDINATE FRAME SIZE WITH EQUIPMENT DETAILS.
 - PROVIDE BLOCKING AT DUCT OPENINGS & BELOW ROOF CURBS, SEE STRUCTURAL DRAWINGS.
 - OVEN EXHAUST FAN - SEE MEP DRAWINGS
 - PREFINISHED METAL AWNINGS PROVIDED AND INSTALLED BY OWNER - SEE REFLECTED CLG. PLAN, EXTERIOR ELEVATIONS & STRUCTURAL DRAWINGS
 - 4" DUROLAST ROOF DRAIN, FURNISHED AND INSTALLED BY ROOF CONTRACTOR. DRAIN PIPE PROVIDED AND INSTALLED BY PLUMBER. REF. PLUMBING DWGS FOR ADDITIONAL INFO.
 - CHAIN BROILER EXHAUST FAN - SEE MEP DRAWINGS
 - FRYER / GRIDDLE EXHAUST FAN - SEE MEP DRAWINGS
 - ICE MACHINE CONDENSER - SEE MEP DRAWINGS
 - TOILET EXHAUST FAN - SEE MEP DRAWINGS
 - HVAC UNIT - SEE MEP DRAWINGS
 - CONDENSER UNIT - SEE MEP DRAWINGS
 - MAKE UP AIR UNIT - SEE MEP DRAWINGS
 - 4" OVERFLOW DRAINS, INLET AND OUTLET PROVIDED AND INSTALLED BY ROOF CONTRACTOR. BOTTOM INSTALLED 4" MAX. ABOVE ROOF DRAIN INLET ELEVATION. REF. PLUMBING DWGS. FOR ADDITIONAL INFORMATION.
 - FREEZER/COOLER CONDENSER UNIT - COORDINATE EXACT LOCATION W/ FREEZER/COOLER MANUFACTURER - SEE MEP DRAWINGS
 - 1 1/2" DIA. STL. PIPE GUARD RAIL, PRIMED AND PAINTED. PROVIDE POST SPACING @ 6'-0" O.C. WELD PIPE TO FLANGE SUPPORT. PROVIDE BLOCKING AS REQUIRED. PROVIDE FLASHING AS RECOMMENDED BY ROOF MFR.



ROOFING SPECIFICATIONS

- ROOF MEMBRANE SYSTEM: VINYL CHLORIDE POLYMER-BASED POLYMER BLEND REINFORCED WITH HIGH STRENGTH, 14 X 18 PATTERN, WEFT INSERTED, POLYESTER SCORM. MEMBRANE SHALL INCLUDE UV STABILIZERS, UV ABSORBERS, PLASTICIZERS, HEAT STABILIZERS, FLAME RETARDANTS, LUBRICANTS, AND BIOCIDES. DURO-LAST SINGLE-PLY 0.040 IN. THICK WHITE ROOF MEMBRANE BY DURO-LAST ROOFING, INC., 525 MORLEY DRIVE SAGINAW, MI 48601; PHONE 800 248-0280.
- ROOF INSULATION: URETHANE RIGID BOARD, URETHANE/PERLITE COMPOSITE BOARD, FIBERGLASS BOARD, FOAMGLASS BOARD, PERLITE BOARD OR POLYSTYRENE WITH AN R-32 VALUE. APPROVED FOR CONSTRUCTION OF CLASS A ROOF COVERINGS.
- WALKWAY PADS: DURO-LAST "ROOF TRAC III" 0.135 IN. THICK; 30"x60" SIZE; COLOR/WHITE; 2 SAFETY YELLOW SKIRTS ALONG 60" SIDES.
- G.C. SHALL PROVIDE AND INSTALL COMPLETE ROOF SYSTEM w/INSULATION.

NOT USED N.T.S. 10