

NO.	DATE	DESCRIPTION

REFLECTED CEILING PLAN

DATE: 6-23-17

SHEET NUMBER:

A-2.0

NOTE:
SUSPENDED CEILING SYSTEMS TO BE INSTALLED IN ACCORDANCE WITH IBC SECTION 803.9.1.1.

NOTE:
INSTALL BRACING 12"-0" O.C. EA. WAY & WITHIN 4"-0" OF PERIMETER WALLS.

(4)-8 GA. SPLY WIRES IN PLANE OF EA. RUNNER VERTICAL ANGLE 45 DEGREES MAX. SECURE ALL WIRES APPROXIMATELY 2" FROM INTERSECTION.

INDEPENDENT GADY SUPPORT CLIP LIGHT FIXTURE CONNECTION

SUSPENDED LAY-IN CEILING DTL. SCALE: 1" = 1'-0" 2

CEILING LEGEND

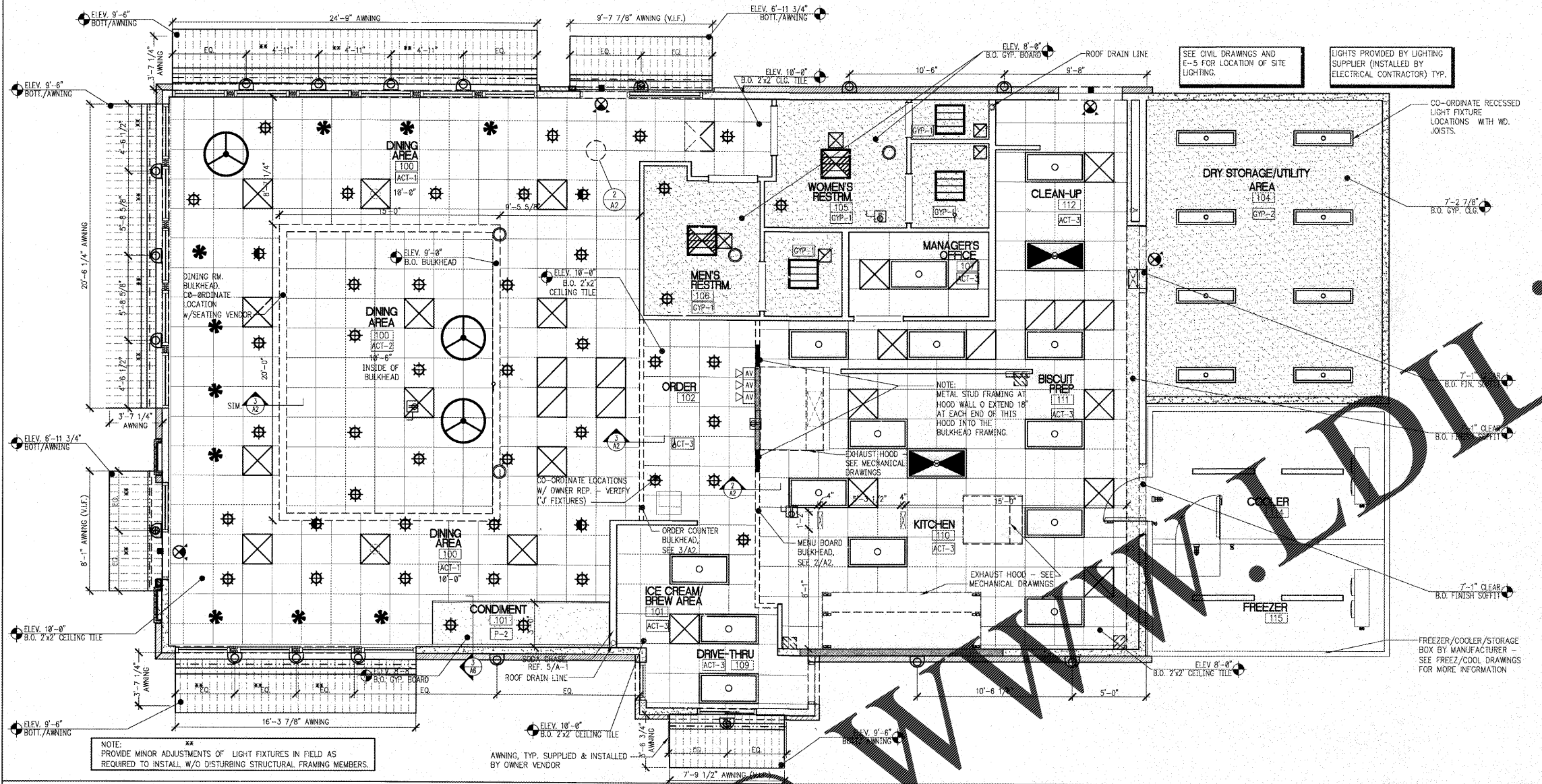
SYMBOL	DESCRIPTION	REMARKS
☒	RESTROOM EXHAUST DUCT	REFER TO THE MECHANICAL DWGS FOR THE RESTROOM EXHAUST DUCT.
☒	SUPPLY DIFFUSERS (TYPICAL)	REFER TO THE MECHANICAL DWGS FOR THE CEILING GRILLE CONNECTIONS. SEE P-2 TO MATCH CORRESPONDING CEILING COLOR.
☒	RETURN/EXHAUST GRILLE	REFER TO THE MECHANICAL DWGS FOR THE CEILING GRILLE CONNECTIONS. SEE P-2 TO MATCH CORRESPONDING CEILING COLOR.
○	MUSIC SPEAKERS	FURNISHED & INSTALLED BY AUDIO VENDOR. PART TO MATCH CEILING COLOR.
●	DRIVE-THRU SPEAKERS	FURNISHED BY OWNER, INSTALLED BY GC.
☒	SURFACE MOUNTED SPEAKERS	FURNISHED & INSTALLED BY AUDIO VENDOR.

- NOTES**
- THE ELECTRICAL CONTRACTOR SHALL FURNISH AND INSTALL ALL REQUIRED ACCESSORIES, OPTIONS, MOUNTING HARDWARE, AND FIELD FABRICATION REQUIRED TO PROPERLY ADAPT THE FIXTURES TO THE SPECIFIC APPLICATIONS.
 - LAY-IN LIGHTING FIXTURES SHALL NOT RELY ON THE CEILING SYSTEM ALONE FOR SUPPORT. LAY-IN LIGHTING FIXTURES SHALL BE SUPPORTED FROM THE STRUCTURE BY NO LESS THAN TWO HANGER WIRES AND SECURED TO THE CEILING GRID SYSTEM WITH THE APPROPRIATE SCREW HARDWARE.
 - CUT-OUTS AT FIXTURES IN LAY-IN CEILING SHALL BE PRECISE WITH NO GAPS, CHIPS OR IRREGULARITIES.
 - CEILING GRID SHALL BE LEVEL WITHIN A TOLERANCE OF 1/8" IN A SPAN OF 10'-0".
 - ELECTRICAL CONTRACTOR TO CLEARLY LABEL PANEL BOARD CIRCUITING AS TO OPERATION.
 - ALL ELECTRICAL DEVICES SHALL BEAR THE U.L. LABEL.
 - ALL ELECTRICAL WORK SHALL FOLLOW ALL APPLICABLE NATIONAL, STATE AND LOCAL CODES, REGULATIONS AND LAWS.
 - SEE ELECTRICAL DRAWINGS FOR ADDITIONAL REQUIREMENTS AND SPECIFICATIONS.
 - SEE MECHANICAL DRAWINGS FOR ADDITIONAL REQUIREMENTS AND SPECIFICATIONS.
 - DIMENSIONS SHOWN ARE FINISH DIMENSIONS, UNLESS NOTED OTHERWISE.
 - REFER TO FLOOR PLAN, SHT. A-1 FOR FRAMING DIMENSIONS OF WALLS AND BULKHEADS.
 - AT DINING AREAS, THIS ORDER AREA, KITCHEN AREA, MANAGER OFFICE, ALL SUPPLY AND RETURN DIFFUSERS (AND CEILING SPEAKERS WHERE APPLICABLE) ARE TO BE FACTORY FINISH COLOR AND SHALL MATCH THE COLOR OF ADJOINING CEILING.
 - AT EACH RESTROOM, ALL EXHAUST FANS, SUPPLY DIFFUSERS, AND SPEAKERS ARE TO BE FACTORY FINISH COLOR: WHITE.

MATERIALS SCHEDULE

SYMBOL	MATERIAL	DESCRIPTION	REMARKS
ACT-1	2'x 2' CEILING TILE	ARMSTRONG - FINE FISSEDG #928 WHITE COLORED TILE WITH SQUARE EDGE. ARMSTRONG 15/16" TEE GRID SYSTEM WITH MATCHING WHITE COLOR.	
ACT-2	2'x 2' CEILING TILE	ARMSTRONG - FINE FISSEDG #1728 BL - TECH BLACK COLORED TILE WITH SQUARE EDGE. ARMSTRONG 15/16" EXPOSED TEE GRID SYSTEM WITH MATCHING TECH BLACK COLOR.	
ACT-3	2'x 2' WASHABLE CEILING TILE	USG (800) 950-3839 - SHEETROCK CLIMAPLUS 3278 VINYL FACED GYPSUM LAY-IN PANELS, 24"x24"x1/2" SQUARE EDGE, WHITE STIPPLE, w/DIANN SERIES DXL CLASS A 15/16" STANDARD EXPOSED GRID SYSTEM, COLOR: FLAT WHITE.	
GYP-1	GYP. BOARD, CEILING	5/8" GYP. BOARD CEILING (RESTROOMS). PAINTED SHERWIN WILLIAMS SW7009 COLOR PEARLY WHITE - SATIN LATEX.	SEE P-4 SHT. A1.1
GYP-2	GYP. BOARD, CEILING	5/8" GYP. BD. CEILING (DRY STORAGE AREA). PAINTED SHERWIN WILLIAMS SW7009 COLOR: PEARLY WHITE - SATIN LATEX.	SEE P-5 SHT. A1.1

MATERIALS SCHEDULE N.T.S. 8

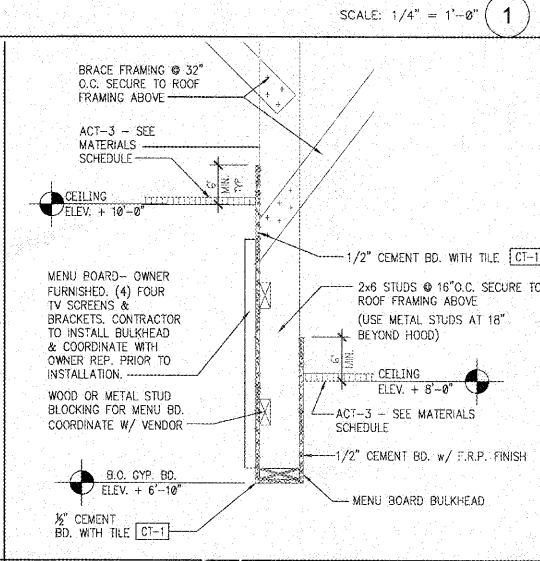
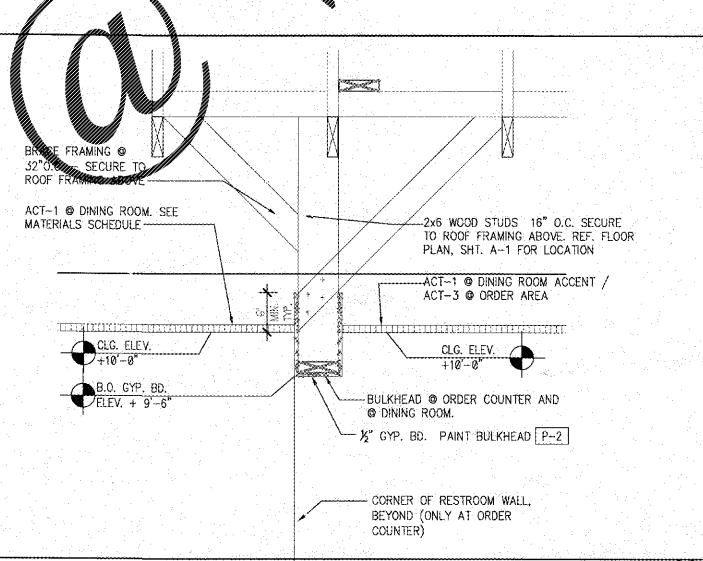


LIGHTING FIXTURE SCHEDULE

FIXTURE TYPE	SYMBOL	DESCRIPTION	MANUFACTURER & MODEL NUMBER	LAMP	REMARKS	GENERAL NOTE
A	○	2'x4" LAY-IN LED W/ PRISMATIC LENS LED LAMP TROFFER W/ REFLECTOR AND DRIVER	SECURITY LTD. (COLUMBIA) LIT24-40MLG-FS12-EU	LED - 52W	G.C. TO ORDER APPROPRIATE MOUNTING HARDWARE AS REQUIRED FOR PROPER CEILING INSTALLATION	
B	☒	SIMILAR TO "A" W/ INVERTERS FOR EMERGENCY LIGHTING	SECURITY LTD. (COLUMBIA) LIT24-40MLG-FS12-EU	LED - 52W		
C	☒	NOT USED				
D	☒	2'x2" RECESSED LED W/ PRISMATIC LENS LED LAMP FIXTURE W/ ENHANCED ALUM. REFLECTOR W/ INVERTER FOR EMERGENCY LIGHTING	SECURITY LTD. (COLUMBIA) LIT22-40MLG-FS12-EU	LED (26.7W)		
E	☒	SIMILAR TO "D" W/ CUT INVERTER	SECURITY LTD. (COLUMBIA) LIT22-40MLG-FS12-EU	LED (26.7W)		
F	☒	NOT USED				
G	○	PENDANT FIXTURE	SECURITY LTD. (COLUMBIA) LIT22-40MLG-FS12-EU	LED (26.7W)	LARGE DIMENSIONS WITH 18"X20" 3A SHAEL, W/ 1/2" LED 1/2" 300K	
H	☒	NOT USED				
I	☒	PENDANT FOOTCANDLE	SECURITY LTD. (COLUMBIA) LIT22-40MLG-FS12-EU	LED (23W)	HELIX PENDANT OPAL LESS TRAP	
J	☒	RECESSED LED DOWN LIGHT	SECURITY LTD. (COLUMBIA) LIT22-40MLG-FS12-EU	LED (26.7W)	PRIME WHITE TRIM & BACK TRIM (FOR IN WIRE CL. & BACK CL.)	DINING ROOM CEILING
K	☒	DRY STORAGE/UTILITY AREA - 1'x4" RECESSED LED	SECURITY LTD. (COLUMBIA) LIT22-40MLG-FS12-EU	LED (36.4W)	GYP. BOARD MOUNTING KIT 1x4" RECESSED LED WITH W/FP	
L	☒	EMERGENCY LIGHT W/ REMOTE CONTROL FIXTURE	SECURITY LTD. (COLUMBIA) LIT22-40MLG-FS12-EU	LED (26.7W)	FIXTURES AND HEADS SHALL BE BLACK	
M	☒	AWNING LED	SECURITY LTD. (COLUMBIA) LIT22-40MLG-FS12-EU	LED (26.7W)	LED SUPPLIED BY AWNING. G.C. TO SUPPLY/CONNECT POWER.	
P	☒	AWNING UPLIGHT & DOWNLIGHT	SECURITY LTD. (COLUMBIA) LIT22-40MLG-FS12-EU	150 W METAL HALIDE	WALL SCENE, UP/DOWN LIGHTING, 25 WATT, BLACK FINISH	
Q	☒	AWNING DOWNLIGHT ONLY	SECURITY LTD. (COLUMBIA) LIT22-40MLG-FS12-EU	150 W METAL HALIDE	WALL SCENE, UP/DOWN LIGHTING, 14 WATT, BLACK FINISH	
R	☒	NOT USED				
T1	☒	NOT USED				SEE CIVIL DWGS FOR LOCATION
T2	☒	NOT USED				SEE CIVIL DWGS FOR LOCATION
U	☒	NOT USED				
V	☒	NOT USED				
X	☒	NOT USED				
Z	☒	FREEZER LIGHTS-VAPOR TYPE	SEE REMARKS	SEE REMARKS	FIXTURES AND LAMPS PROVIDED BY C/P MFG. - INSTALLATION BY G.C.	

SCHEDULE REVISED TO MATCH LIGHT FIXTURE SCHEDULE SHEET E-2.

N.T.S. 5 NOT USED



MATERIALS SCHEDULE N.T.S. 8