

**IRB** national restaurant designers  
 ARCHITECTS & ENGINEERS  
 3005 CARRINGTON HILL BLVD. SUITE 105  
 ROCKY MOUNT, NORTH CAROLINA 27850  
 PH: 919.344.7251 FAX: 919.344.9389  
 A Division of L.M.H.I. Associates

**ASSOCIATES P.A.**  
 CONTRACTING CORPORATION  
 1718  
 L.M.H.I. ASSOCIATES  
 3177  
 ROCKY MOUNT, NORTH CAROLINA 27850

**Star Hardee's**  
 HARDEE'S REVERSE PROTOTYPE  
 BURGAY, N.C. 28425

**BODDIE-NOELL ENTERPRISES, INC.**  
 P.O. BOX 1908  
 ROCKY MOUNT, N.C. 27802-1908  
 (252) 937-2800

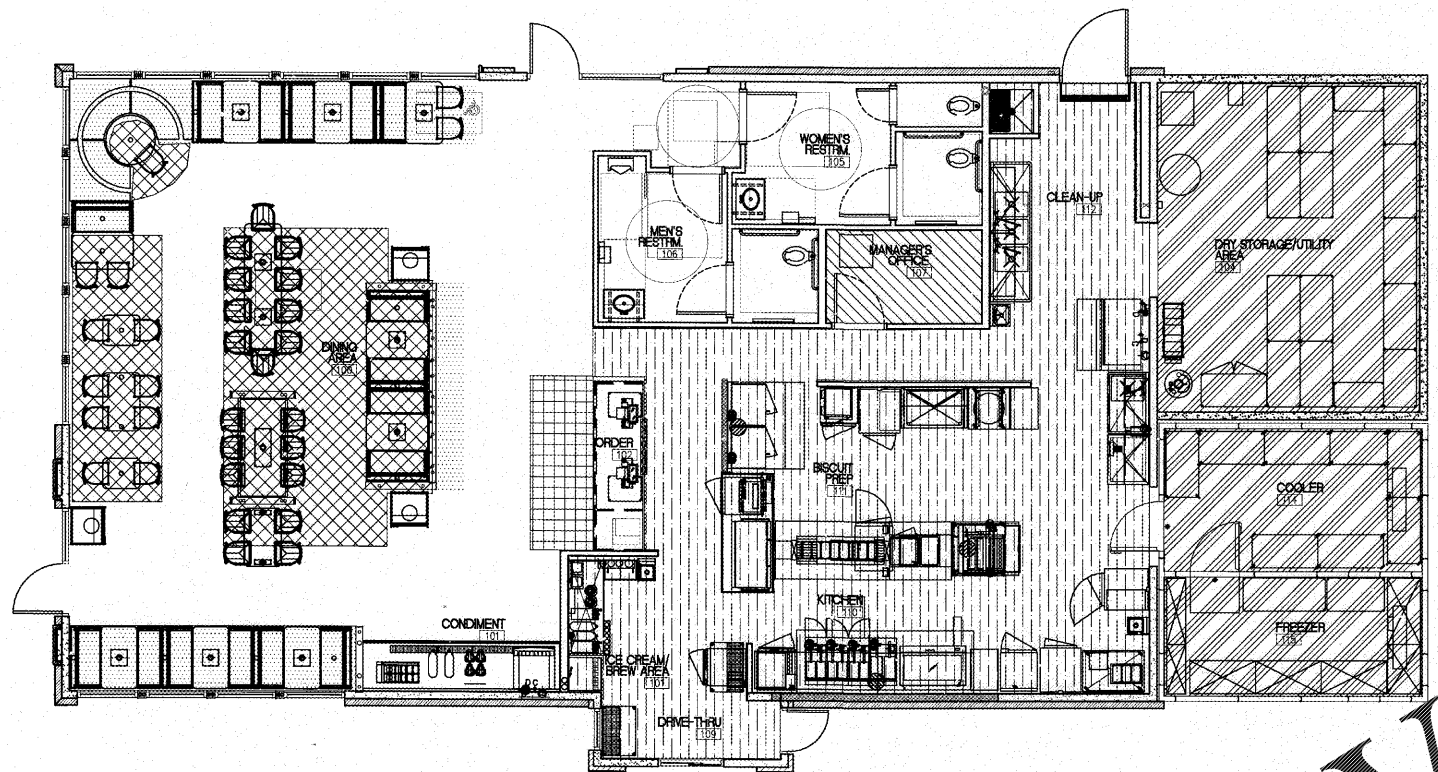
**OWNER: BN**

NO.	REVISIONS DESCRIPTION	DATE

**OCCUPANCY AND LIFE SAFETY PLANS**

DATE: 6-23-17

SHEET NUMBER: T-2



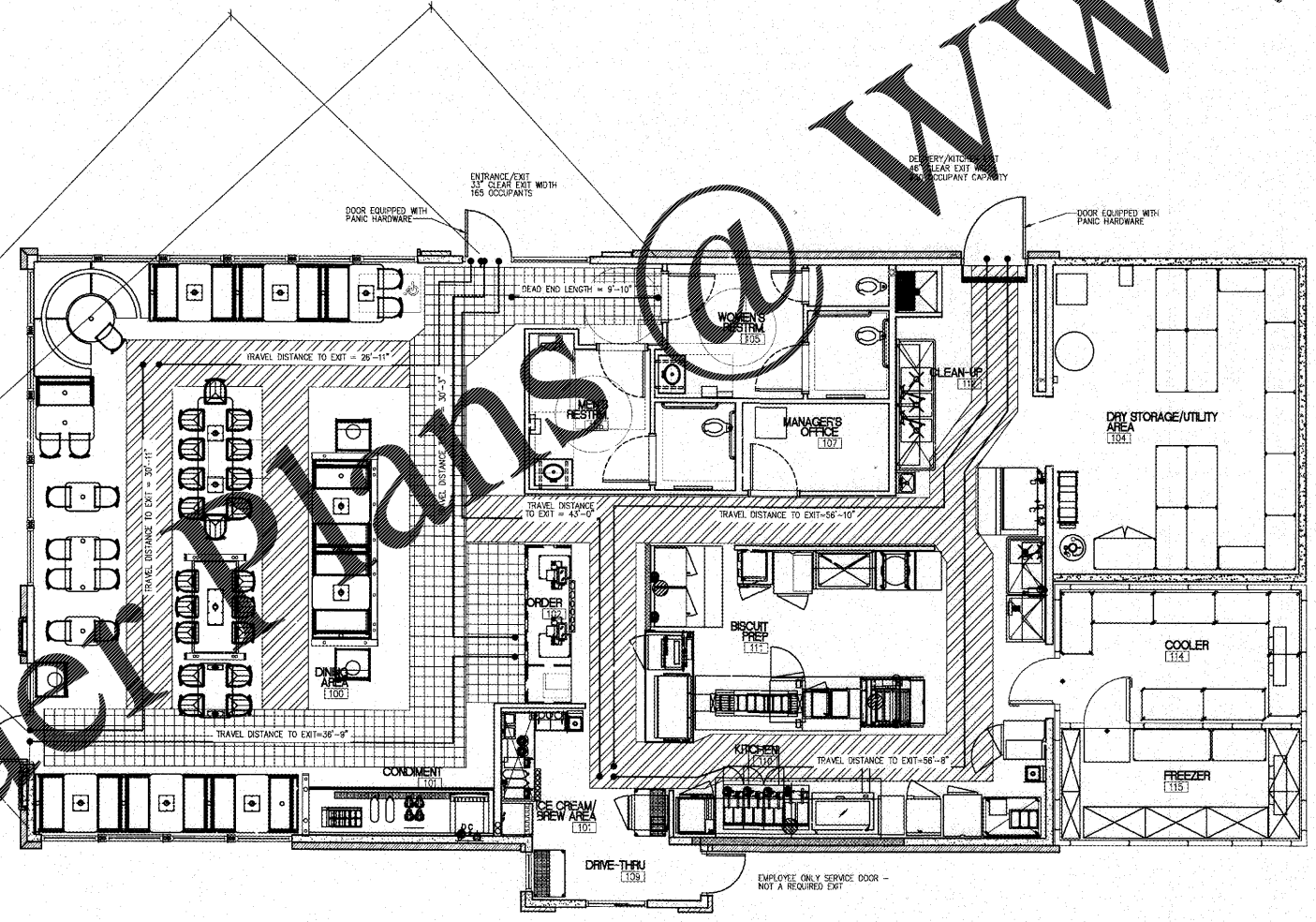
MARK	SPACE	BY SQUARE FOOTAGE		BY SEAT COUNT			
		TABLE ROOM	S.F.	OCCUPANCY	TABLE SIZE	QUANTITY	SEAT
UNMATCHED	CIRCULATION / TOILETS / MECHANICAL (NOT OCCUPYABLE)			0	2 TOP TABLE	4	8
	QUEING - UNDER 5 S.F.	80		8	4 TOP TABLE	4	16
	KITCHEN / FOOD PREP / SERVING - 1 PER 100 S.F.	895.6		9	4 TOP BOOTH	6	24
	DINING AREA - 1 PER 15 S.F.	329.5		22	6 TOP TABLE	6	36
	DINING AREA (BOOTH/FIXED SEATING) - 1 PER 2'-0" L.F.	73.2		3	6 TOP BOOTH	1	6
	OFFICE - 1 PER 100 S.F.	22.0		1	9 TOP TABLE	1	9
	STORAGE AREA - 1 PER 300 S.F.	63.6		2			2
TOTAL:				75			85
WORST CASE TOTAL = 85							

- THE LEFT SIDE OF THE DESIGN OCCUPANCY LOAD IS BASED BY MAXIMUM FLOOR AREA ALLOWANCES PER OCCUPANT. THIS OCCUPANCY TOTAL IS NOT TO BE USED.
- THE RIGHT SIDE OF THE TABLE SHOWS THE TOTAL SEAT COUNT. THE TOTAL SEAT COUNT IS GREATER IN NUMBER THAN THE FLOOR AREA COUNT. THE WORST CASE SCENARIO IS THIS TABLE BEING USED TO DETERMINE OUR DESIGN OCCUPANCY LOAD AND EXITING REQUIREMENTS. TOILET FIXTURE REQUIREMENTS, AND HEATING/COOLING AND VENTILATION REQUIREMENTS.
- THIS INCREASED OCCUPANCY LOAD IS IN ACCORDANCE WITH SECTION 1004.2 OF THE INTERNATIONAL BUILDING CODE.

HANDICAP REQUIREMENTS = 5%

OCCUPANCY PLAN

SCALE: 3/16"=1'-0" 2



[Pattern]	PRIMARY EXIT PATH MIN. - 44" WIDE 50 PEOPLE AND OVER
[Pattern]	SECONDARY EXIT PATH - MIN. 36" WIDE UNDER 50 PEOPLE

**EXIT REQUIREMENTS:**  
 TRAVEL DISTANCE TO EXIT- MAX ALLOWED = 200'  
 ACTUAL = 57'

**EXITS REQUIRED=** KITCHEN-1  
 DINING-2      **EXITS PROVIDED=** KITCHEN-1  
 DINING-2

**DISTANCE BETWEEN EXITS:**  
 MAIN DINING- REQUIRED (1/2 DIAGONAL) = 27'-7 1/2"  
 ACTUAL = 42'-10"

**EXIT WIDTH (0.2/PER OCCUPANT)**  
 REQUIRED:  
 87x0.2" = 17.4"  
 50% THRU FRONT = 8.7"

**PROVIDED:**  
 KITCHEN (1) 48"=48"  
 DINING (2) 36"=72"  
 THRU FRONT = 36"

LIFE SAFETY PLAN

SCALE: 3/16"=1'-0" 4