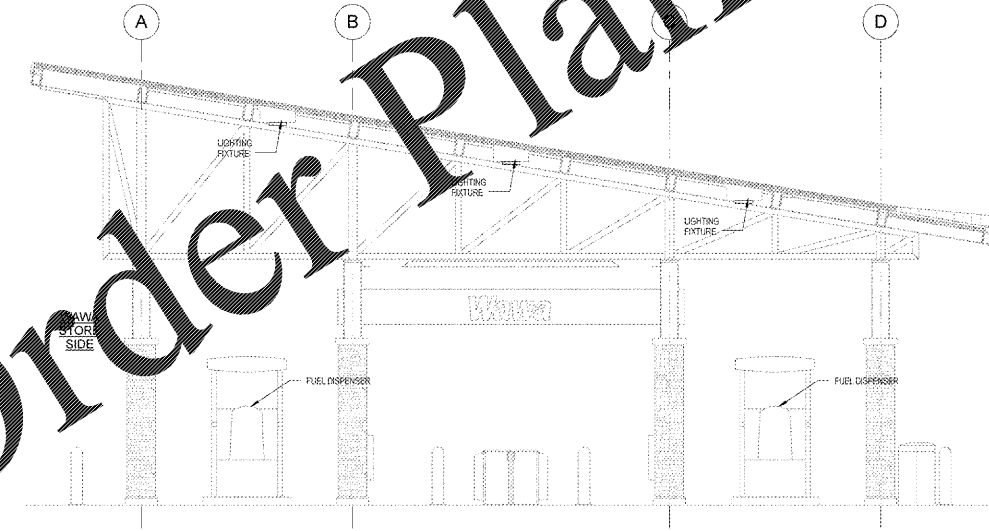


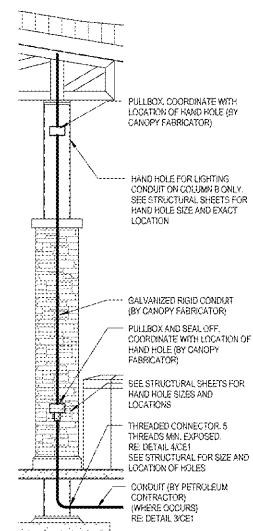
1 CANOPY ELECTRICAL REFLECTED CEILING PLAN
CE1 1/4" = 1'-0"

Lighting Fixture Schedule					
TYPE	MANUF	CATALOG NO.	QUANT	WATTAGE	REMARKS
FD	LED - DECK MOUNT - SLOPED ADAPTER		114	114 W	[SURFACE]

ALL LIGHT FIXTURES AND LAMPS SUPPLIED BY WAWA, G.C. TO COORDINATE INSTALLATION WITH CANOPY VENDOR. COORDINATE FIXTURE COUNT, LOCATIONS AND LAMP OUTPUT WITH THE LIGHTING ENGINEERING DRAWINGS.



2 CANOPY SIDE ELEVATION
CE1 1/4" = 1'-0"



5 COLUMN SECTION
CE1 3/8" = 1'-0"

ELECTRICAL NOTES

- ALL FIXTURES AND COMPONENTS SHALL BE GROUNDED BY A SEPARATE #10 GROUND WIRE.
- PETROLEUM CONTRACTOR TO PULL WIRING FOR INTERCOM AT CANOPY (SUPPLIED BY OTHERS).
- THE CONDUIT FOR THE "FD" FIXTURES TO RUN ALONG THE GUTTER PAN AND RUN TO THE FIXTURES IN THE FLUTES OF THE DECKING. NO CONDUIT SHOULD BE VISIBLE FROM BELOW THE CANOPY.
- FOR DISPENSER DATA, VEEDER-ROOT SENSOR, AND INTERCOM SYSTEMS PROVIDE CONDUCTORS AND CONNECTORS AS REQUIRED. COORDINATE WITH WAWA CONSTRUCTION MANAGER. USE THIS CIRCUIT TO PROVIDE POWER TO 200 VOLT ILLUMINATED SIGN AT THE LOCATION BETWEEN CANOPY COLUMNS AT APPROXIMATELY 12' APART.
- ELECTRICAL CONTRACTOR TO COORDINATE WITH PETROLEUM CONTRACTOR AND GENERAL CONTRACTOR TO MAKE SURE THAT SEAL OFF FITTINGS AS REQUIRED ARE PROVIDED FOR CONDUITS ENTERING THE FUEL DISPENSERS AND THAT THE ELECTRICAL INSTALLATION AT THE GAS CANOPY AND FUEL TANKS IS IN ACCORDANCE WITH NEC ARTICLE 514.
- FOR BRANCH CIRCUITS OUT TO CANOPY AREA, IF CIRCUIT LENGTH EXCEEDS 100 FEET WIRE/CONDUIT MUST BE SIZED PER NEC 13-415.1 (B) (2) (FLORIDA ONLY).
- LIGHT FIXTURES PROVIDED BY WAWA, G.C. TO COORDINATE INSTALLATION OF CONDUIT, WIRING AND FINAL CONNECTION WITH E.C. AND CANOPY VENDOR.
- WAWA GROSS BIDDING E.C. TO VERIFY EXACT LOCATION WITH G.C. AND ARCHITECTURAL DRAWINGS, E.C. TO RUN WIRING, CONDUIT AND CONNECT TO LOCAL CIRCUITRY.

TANKS AND CANOPY CONDUITS AND CONDUCTORS NOTE:

THE GENERAL CONTRACTOR SHALL FURNISH AND INSTALL ALL GRC CONDUIT, ASSOCIATED FITTINGS AND WIRE NECESSARY TO PROVIDE A COMPLETE ELECTRICAL SYSTEM FOR THE GAS CANOPY, FUEL TANKS, MISC AND INTERCOM SYSTEM.

HOWEVER, THE FOLLOWING CONDUIT SHALL BE PROVIDED AND INSTALLED BY THE CONTRACTOR INDICATED BELOW:

FUEL TANKS
PETROLEUM CONTRACTOR SHALL FURNISH AND INSTALL THE CONDUIT FROM THE EDGE OF THE FUEL TANK CONCRETE PAD AND TERMINATE AT THE TANK EQUIPMENT.

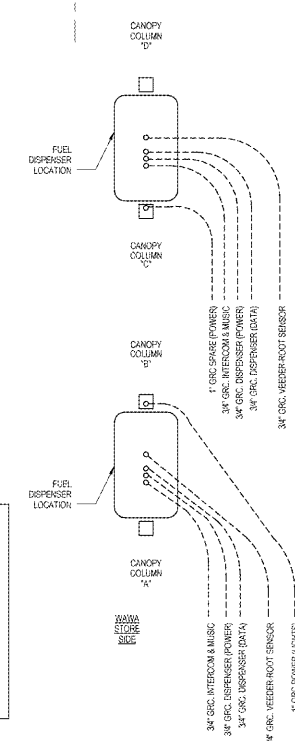
GAS CANOPY
PETROLEUM CONTRACTOR SHALL FURNISH AND INSTALL THE CONDUIT FROM THE EDGE OF THE CONCRETE CANOPY PAD TO THE BASE OF THE CANOPY COLUMNS WHERE THEY WILL MAKE A THREADED CONNECTION. REFER TO DETAIL A-C-E CANOPY FABRICATOR. SHALL FURNISH AND INSTALL THE THREADED CONNECTOR (MIN 5 EXPOSED THREADS) AT THE BASE OF THE CANOPY COLUMN AND CONTINUE UP THROUGH THE COLUMN TO A SEAL OFF AND ABOUT 2" THEN CONTINUE WITH RIGID CONDUIT TO THE BOTTOM OF THE CANOPY WHERE IT WILL TRANSITION INTO SEAL-TIGHT CONDUIT AND TERMINATE AT THE FIRST ROW OF LIGHTS. DO NOT CONNECT INTO THE FIRST ROW OF LIGHTS AND COMPLETE THE ELECTRICAL CANOPY LIGHTING.

PETROLEUM CONTRACTOR SHALL ALSO INSTALL THE CONDUIT FROM THE EDGE OF THE CONCRETE CANOPY PAD TO THE TERMINATION POINT FOR THE MISC AND INTERCOM SYSTEMS.

4 THREADED CONNECTION
CE1 2" = 1'-0"

GASOLINE CANOPY CONDUIT REQUIREMENTS:

- (1) 3/4" GRC TO EACH DISPENSER FOR INTERCOM/MISC
- (1) 1" GRC TO EACH CANOPY COLUMN C FOR SPARE
- (1) 1" GRC TO EACH CANOPY COLUMN B FOR CANOPY LIGHTING (EACH COLUMN FURTHEST FROM STORE AT FIRST ROW OF DISPENSERS)
- (2) 3/4" GRC TO EACH DISPENSER
- (1) POWER, 1 DATA
- (1) 3/4" GRC TO EACH DISPENSER (VEEDER-ROOT SENSOR)



3 CANOPY CONDUIT LOCATIONS
CE1 1/12" = 1'-0"

WWW.LDILINE.COM

Order Plans @

WAWA
260 WEST BALTIMORE PIKE
WAWA, PENNSYLVANIA 19083

CLIENT NAME
WAWA

PROJECT NAME
WAWA STACKED 8 GAS CANOPY 2017.01 STORE #5254-0KE
OKEECHOBEE RD & JENKINS RD
FT. PIERCE, FLORIDA

SHEET TITLE
ELECTRICAL CANOPY PLANS, DETAILS, SCHEDULES

PROJECT NO.
210503

DATE
08/30/17

DRAWN BY
JAW

CHECKED BY
JAW

SCALE
AS SHOWN

REVISIONS

No.	Description	Date
1	PRELIMINARY SET	MAY 14
2	REVISED REVISION SET	07/26/2017
3	REVISED	08/30/2017

PROJECT NO. 210503
DATE 08/30/17
DRAWN BY JAW
CHECKED BY JAW
SCALE AS SHOWN
REVISIONS

CE1

LDI
Landscape Design Inc.
10000 W. 11th Ave., Suite 100
Denver, CO 80231
Tel: 303.751.1100
www.ldi.com