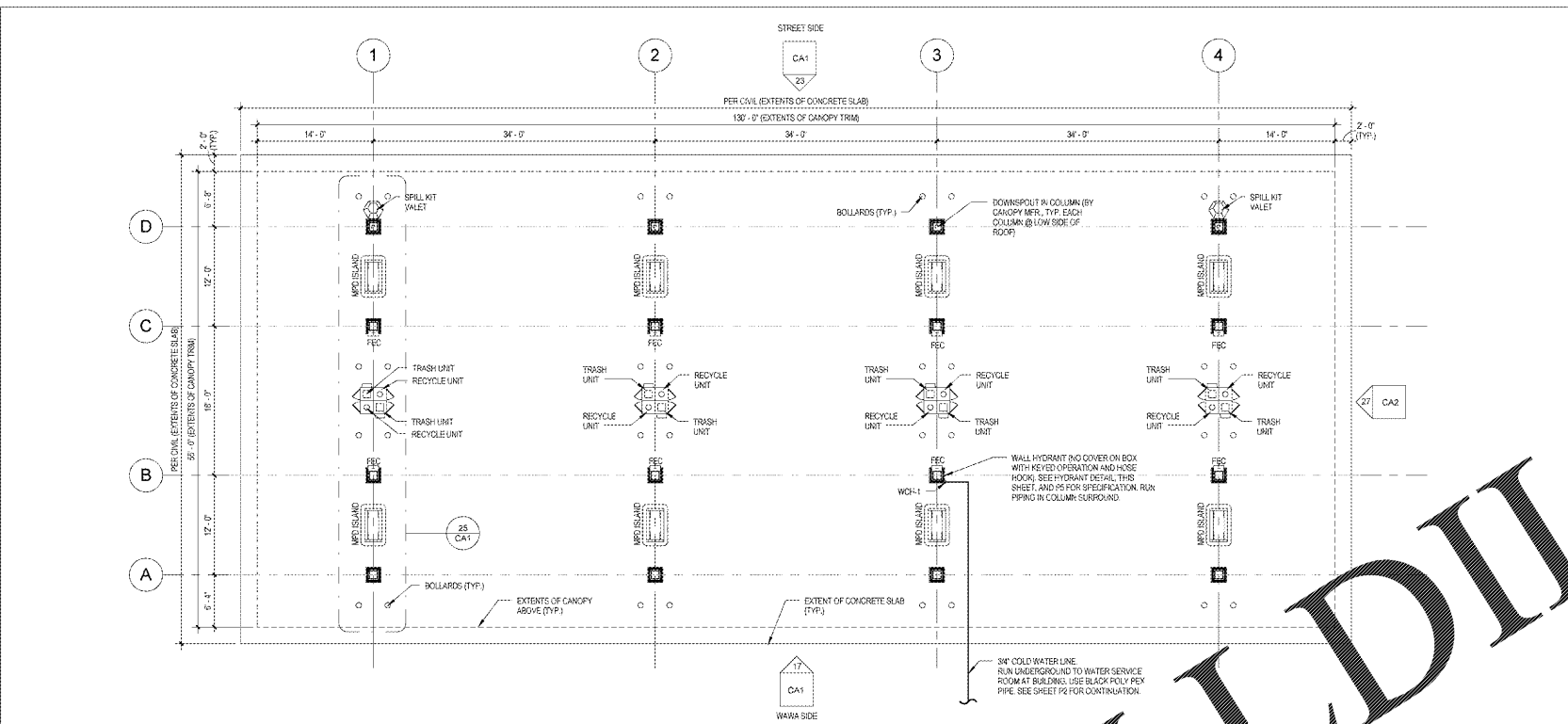
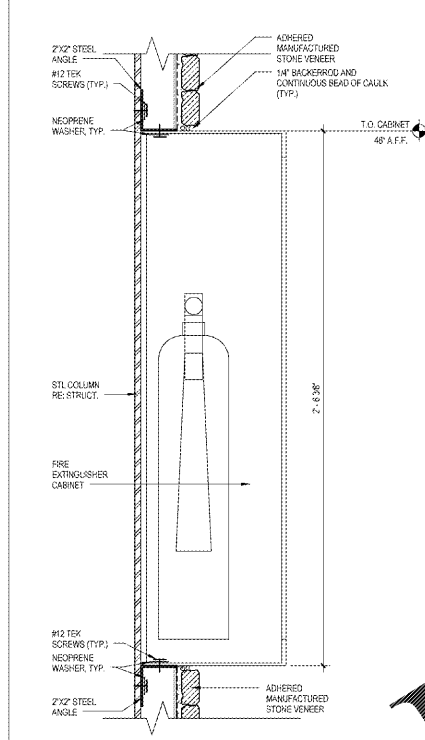


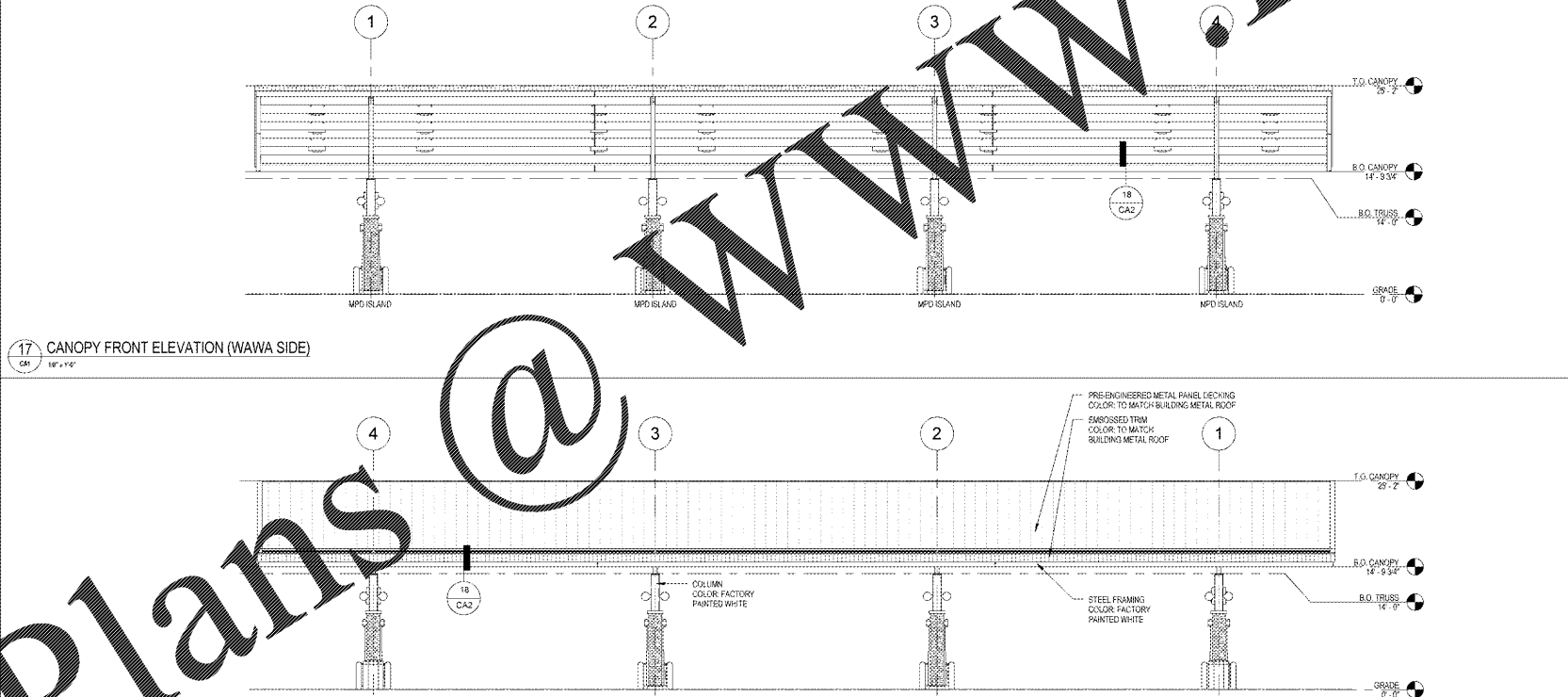
12 COLUMN DETAIL  
CA1 1/2" x 1/4"



11 CANOPY FLOOR PLAN  
CA1 18' x 14'



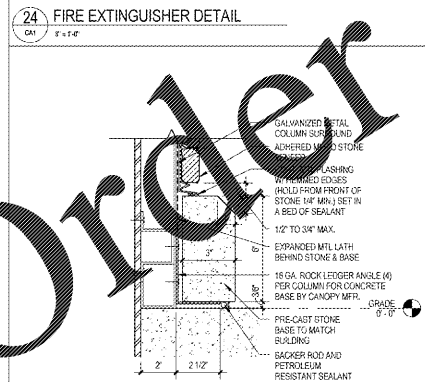
24 FIRE EXTINGUISHER DETAIL  
CA1 1\"/>



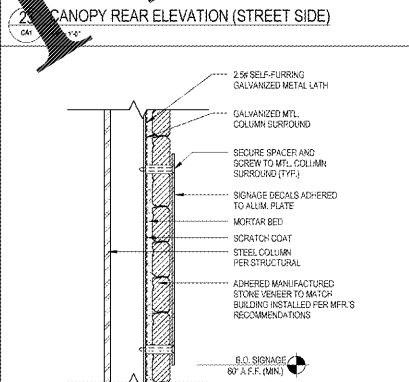
17 CANOPY FRONT ELEVATION (WAWA SIDE)  
CA1 18' x 14'

**GENERAL NOTES:**

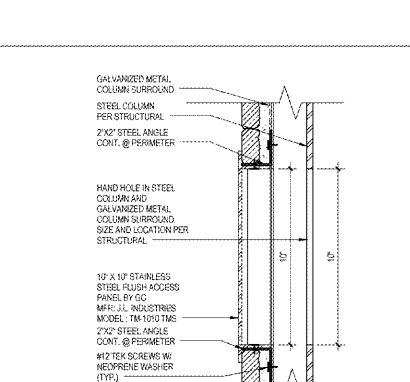
1. ALL WORK SHALL COMPLY WITH THE FLORIDA BUILDING CODE 5TH EDITION (2014), THE FLORIDA FIRE PROTECTION CODE 5TH EDITION (2014), 2012 NFPA 30A CODE FOR MOTOR FUEL DISPENSING FACILITIES AND REPAIR GARAGES, AND 2012 NFPA 10 STANDARD FOR PORTABLE FIRE EXTINGUISHERS. SEE COVER SHEET FOR DETAILED CODE INFORMATION.
2. FIRE EXTINGUISHER CABINETS (F.E.C.) SHALL BE STAINLESS STEEL SURFACE MOUNTED AS MANUFACTURED BY J.L. INDUSTRIES, COSMOPOLITAN SERIES, MODEL #355, WITH FULL CLEAR ACRYLIC GLAZING ON DOOR. FIRE EXTINGUISHER CABINETS ARE SUPPLIED BY WAWA AND INSTALLED BY GENERAL CONTRACTOR. ONE PER MPO ISLAND. SEE DETAILS THIS SHEET FOR REQUIRED MOUNTING HEIGHTS.
3. FIRE EXTINGUISHERS SHALL HAVE A MINIMUM UL RATING OF 4A:60:BC (HIGH FLOW). FIRE EXTINGUISHERS TO COMPLY WITH 2012 NFPA 30A AND MUST BE EXCISED BY 10% TO ALLOW 8\"/>
- 4. FIRE EXTINGUISHER SIGNS PROVIDED AND INSTALLED BY WAWA. SEE DETAIL THIS SHEET FOR REQUIRED MOUNTING HEIGHTS.
- 5. WARNING SIGNS SHALL BE PROVIDED BY WAWA AND INSTALLED BY THE PETROLEUM CONTRACTOR AT EACH MPO ISLAND. WARNING SIGNS (2012 NFPA 30A 5.2.2.4 SIGNS) SHALL INCLUDE BUT NOT BE LIMITED TO:
  - a. NO SMOKING
  - b. STOP ENGINE
  - c. UNLAWFUL TO DISPENSE GASOLINE INTO UNAPPROVED CONTAINERS.
- 6. LOCATION OF TRASH UNITS AND RECYCLE UNITS SHALL BE AS SHOWN ON FLOOR PLAN. ALL RECEPITABLES WITH ADJUSTABLE LEVELERS AND ANCHOR TO CONCRETE SURFACE USING (1) 3/8\"/>
- 7. LOCATION OF SPILL KIT VALETS SHALL BE AS SHOWN ON FLOOR PLAN. ANCHOR TO CONCRETE SURFACE WITH ANCHOR BOLTS AND BRIDGMENT FASTENERS. SPILL KIT VALETS ARE SUPPLIED BY WAWA AND INSTALLED BY PETROLEUM CONTRACTOR.
- 8. VERIFY IF MUSIC IS ACCEPTED OR REQUIRED WITH MUSIC ENGINEER AND MUSIC SCHEDULES FOR MUSIC INSTALLATION REQUIREMENTS. MUSIC SHALL BE INSTALLED BY THE PETROLEUM CONTRACTOR.
- 9. VERIFY CANOPY CONFIGURATION AT FINAL SITE. METAL AND ALUMINUM SHALL BE FINISHED UNLESS NOTED OTHERWISE (LUXE).



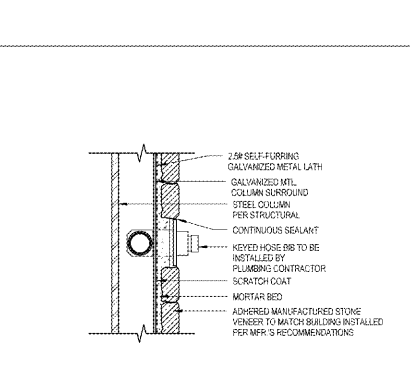
30 BASE DETAIL  
CA1 3\"/>



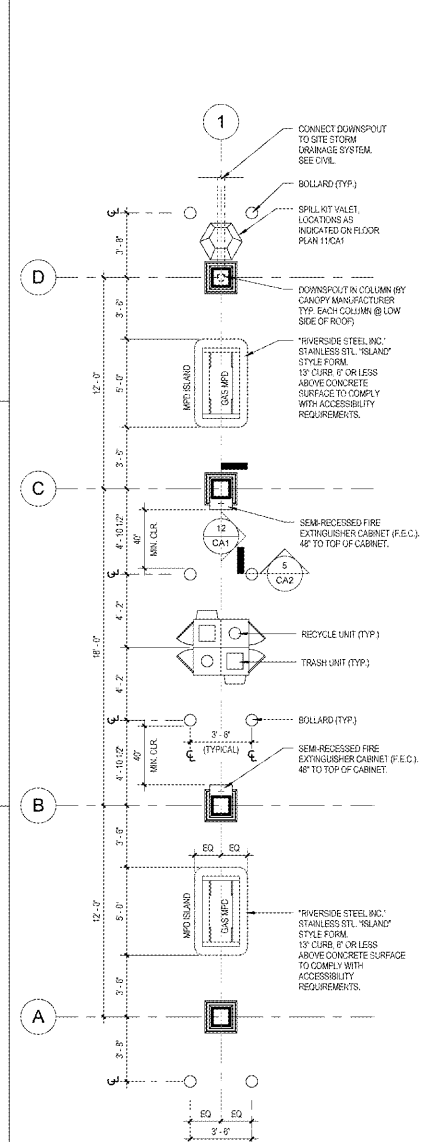
29 FIRE EXTINGUISHER SIGN MOUNTING DETAIL  
CA1 3\"/>



28 ACCESS PANEL DETAIL  
CA1 3\"/>



27 HYDRANT DETAIL  
CA1 3\"/>



25 GAS ISLAND DETAIL  
CA1 14\"/>

**WAWA & Peterson**  
Architects  
Planners  
Interior Designers  
10000 Westchase Blvd., Suite 100  
Houston, TX 77036  
Tel: 281.416.1111  
www.wawaplans.com

**CLIENT NAME:** WAWA  
**PROJECT NAME:** WAWA STACKED 8 GAS CANOPY 2017.01 STORE #5254-0KE  
**ADDRESS:** 280 WEST BALTIMORE PIKE, OKEECHOBEE RD & JENKINS RD, FT. PIERCE, FLORIDA

**DATE:** 08/30/2017  
**BY:** [Signature]  
**CHECKED:** [Signature]

**CA1**