

PANELBOARD: MDP. BUS AMPS: 100A. AIC RATING: 40000 FULLY RATED. MAIN SIZE TYPE: 1000A MCB. VOLT/PHASE: 208Y120V, 3PH, 4W. SECTION: 1. TABLE WITH 4 COLUMNS: CKT NO., DESCRIPTION, VOLT/PHASE, WIRE. Includes equipment ground bus information.

PANELBOARD NOTES: FED FROM MDP. (1) HACR RATED BREAKER.

PANELBOARD: RPA. BUS AMPS: 225A. AIC RATING: 20000 FULLY RATED. MAIN SIZE TYPE: MLO. VOLT/PHASE: 208Y120V, 3PH, 4W. SECTION: 1. TABLE WITH 4 COLUMNS: CKT NO., DESCRIPTION, VOLT/PHASE, WIRE. Includes equipment ground bus information.

PANELBOARD NOTES: FED FROM MDP. (1) HACR RATED BREAKER.

PANELBOARD: RPB. BUS AMPS: 225A. AIC RATING: 20000 FULLY RATED. MAIN SIZE TYPE: MLO. VOLT/PHASE: 208Y120V, 3PH, 4W. SECTION: 1. TABLE WITH 4 COLUMNS: CKT NO., DESCRIPTION, VOLT/PHASE, WIRE. Includes equipment ground bus information.

PANELBOARD NOTES: FED FROM MDP. (1) HACR RATED BREAKER.

PANELBOARD: RPC. BUS AMPS: 225A. AIC RATING: 20000 FULLY RATED. MAIN SIZE TYPE: MLO. VOLT/PHASE: 208Y120V, 3PH, 4W. SECTION: 1. TABLE WITH 4 COLUMNS: CKT NO., DESCRIPTION, VOLT/PHASE, WIRE. Includes equipment ground bus information.

PANELBOARD NOTES: FED FROM MDP. (1) LOCKED BREAKER.

PANELBOARD: RPD. BUS AMPS: 225A. AIC RATING: 20000 FULLY RATED. MAIN SIZE TYPE: MLO. VOLT/PHASE: 208Y120V, 1PH, 3W. SECTION: 1. TABLE WITH 4 COLUMNS: CKT NO., DESCRIPTION, VOLT/PHASE, WIRE. Includes equipment ground bus information.

PANELBOARD NOTES: FED FROM MDP. (1) LOCKED BREAKER. (2) ONE OF THE 2 POLES IS FOR SWITCHED NEUTRAL TO FEED DISPENSERS. CE1 = SEE SHEET CE1 FOR WIRE/CONDUIT SIZES.

PANELBOARD: LPA. BUS AMPS: 225A. AIC RATING: 20000 FULLY RATED. MAIN SIZE TYPE: MLO. VOLT/PHASE: 208Y120V, 3PH, 4W. SECTION: 1. TABLE WITH 4 COLUMNS: CKT NO., DESCRIPTION, VOLT/PHASE, WIRE. Includes equipment ground bus information.

PANELBOARD NOTES: FED FROM MDP. (1) LOCKED BREAKER. CE1 = SEE SHEET CE1 FOR WIRE/CONDUIT SIZES.

PANELBOARD: RPH. BUS AMPS: 100A. AIC RATING: 20000 FULLY RATED. MAIN SIZE TYPE: MLO. VOLT/PHASE: 208Y120V, 3PH, 4W. SECTION: 1. TABLE WITH 4 COLUMNS: CKT NO., DESCRIPTION, VOLT/PHASE, WIRE. Includes equipment ground bus information.

PANELBOARD NOTES: FED FROM MDP.

PANELBOARD: RPG. BUS AMPS: 100A. AIC RATING: 20000 FULLY RATED. MAIN SIZE TYPE: MLO. VOLT/PHASE: 208Y120V, 3PH, 4W. SECTION: 1. TABLE WITH 4 COLUMNS: CKT NO., DESCRIPTION, VOLT/PHASE, WIRE. Includes equipment ground bus information.

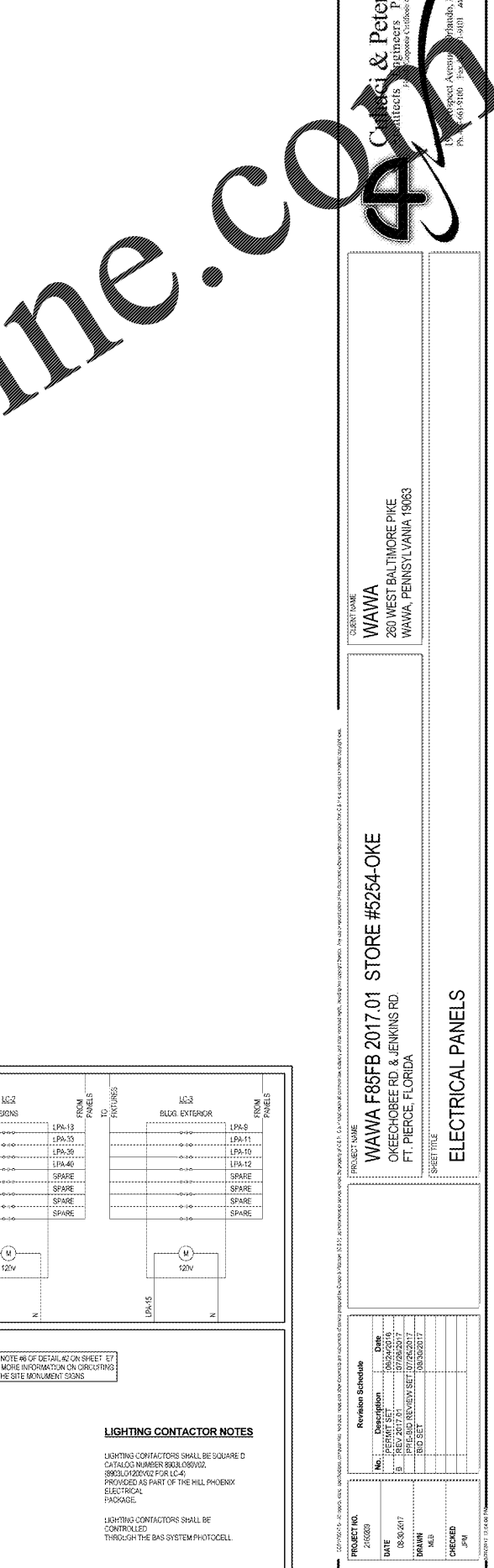
PANELBOARD NOTES: FED FROM MDP.

PANELBOARD: RPI. BUS AMPS: 100A. AIC RATING: 20000 FULLY RATED. MAIN SIZE TYPE: MLO. VOLT/PHASE: 208Y120V, 1PH, 3W. SECTION: 1. TABLE WITH 4 COLUMNS: CKT NO., DESCRIPTION, VOLT/PHASE, WIRE. Includes equipment ground bus information.

PANELBOARD NOTES: FED FROM RPH. (1) LOCKED BREAKER. (2) ONE OF THE 2 POLES IS FOR SWITCHED NEUTRAL TO FEED DISPENSERS. CE1 = SEE SHEET CE1 FOR WIRE/CONDUIT SIZES.

BUILDING ELECTRICAL SERVICE LOAD SUMMARY. TABLE WITH 3 COLUMNS: BUILDING OCCUPANCY TYPE, SERVICE DESCRIPTION, CONNECTED/DEMAND. Includes VOLTAGE DROP CALCULATIONS and LIGHTING CONTACTOR NOTES.

ELECTRICAL PANEL SCHEDULES. NOT TO SCALE.



WAWA F85FB 2017.01 STORE #5254-OKE. PROJECT NAME: WAWA. ADDRESS: 260 WEST BALTIMORE PIKE, WAWA, PENNSYLVANIA 15063. PROJECT NO.: 210509. DATE: 08/30/2017. DRAWN BY: BRYAN WALKER. CHECKED BY: JIM WALKER. SHEET NO.: E5.