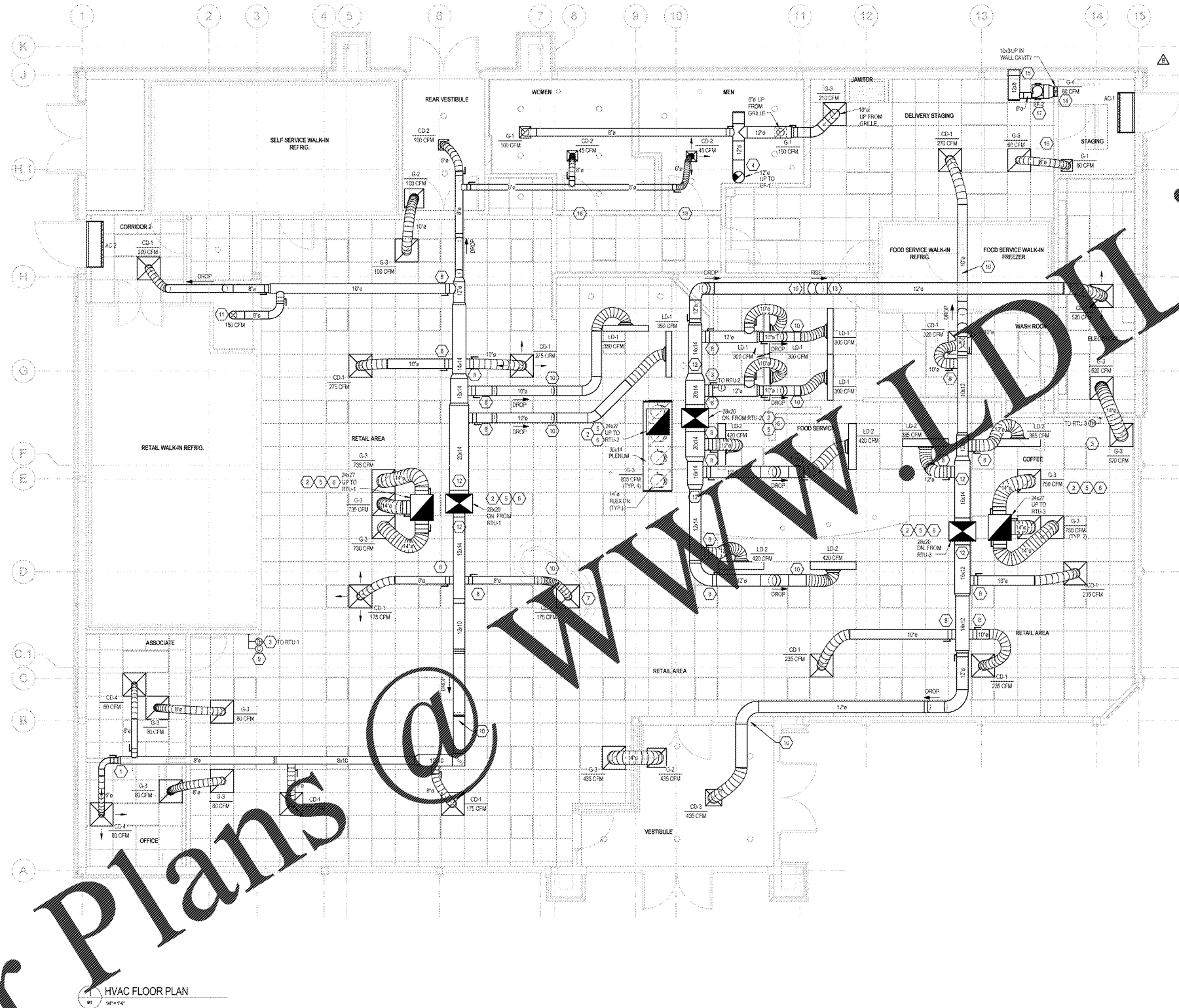


# Order Plans



HVAC FLOOR PLAN  
11/16/17

- KEY NOTES:**
- REMOTE SMOKE DETECTOR TEST STATIONS FOR RTU-1, 2 & 3 PROVIDED BY RTU MANUFACTURER. TEST STATIONS TO BE MOUNTED ON THE MANUFACTURER'S OFFICE WALL. COORDINATE LOCATIONS WITH ARCHITECTURAL PLANS. SECURITY CONTRACTOR SHALL WIRE RTU FACTORY MOUNTED SMOKE DETECTORS TO SECURITY FIRE ALARM PANEL. MECHANICAL CONTRACTOR SHALL PROVIDE WIRING BETWEEN COMPONENTS AS WELL AS WIRING TO SHUT DOWN THE A/C FAN UPON ACTIVATION OF THE SMOKE DETECTOR. G.L. TO TEST THE SMOKE DETECTOR FUNCTIONS WITH THE WAVA PROJECT MANAGER.
  - FACTORY INSTALLED SMOKE DETECTOR IN MAIN SUPPLY AND RETURN OF EACH ROOF TOP UNIT.
  - OWNER SHALL PROVIDE WALL MOUNTED SENSORS FOR EACH MECHANICAL UNIT PER ROOF TOP UNIT SCHEDULE ON SHEET M3. G.C. SHALL INSTALL AND WIRE TO UNIT. BAS CONTRACTOR SHALL CONNECT TO MECHANICAL.
  - COORDINATE EXACT LOCATION OF EXHAUST FAN PENETRATION WITH ARCHITECTURAL. REFER TO AN INSTALL GALVANIZED DUCT WORK DOWN FROM FAN INTO CEILING/JOIST SPACE, AND CONNECT TO EXHAUST GRILLES.
  - REFER TO TYPICAL PLENUM DETAIL ON SHEET
  - PROVIDE ALL CONNECTIONS BETWEEN ALL MECHANICAL UNITS
  - CENTERS AND DATE A 4-WAY DIFFUSER OR C3 (EXPRESS CASE) AND OTHER DIFFUSER AIR FLOW AWAY FROM THE CEILING AS NOTED ON PLAN.
  - POSITION LINEAR SLOT DIFFUSERS WITH TRUSS SPACINGS.
  - OWNER SHALL PROVIDE CO2 SENSOR FOR MECHANICAL UNIT. G.L. SHALL INSTALL AND WIRE TO UNIT. BAS CONTRACTOR SHALL CONNECT TO MECHANICAL UNIT.
  - ROUTE DUCT UNDER BEAM/TRUSS AT THIS LOCATION.
  - ROUTE SUPPLY DUCT DOWN THROUGH GYPSUM BOARD CEILING AND INTO DUCTY-WOOL PRESERVE. SEAL AIR-GUARD DUCT AT PENETRATION AIR TIGHT AND TERMINATE DUCT WITH OPEN END.
  - COORDINATE AND ROUTE MAIN DUCT HIGH IN JOIST SPACE. AVOID CONFLICTS WITH UTILITIES.
  - ROUTE DUCT BACK UP INTO TRUSS WEB IN THIS AREA.
  - MOUNT CENTER OF EXHAUST GRILLE AT 12" ABOVE FINISHED FLOOR. ROUTE DUCT SIZED AS SHOWN FROM GRILLE, UP IN WALL CAVITY TO SHORT CEILING THEN TO EXHAUST FAN AND OUT TO EXTERIOR WALL DUCT. COORDINATE DUCT ROUTING WITH ALL OTHER TRADES.
  - 12"X6" EXTERIOR WALL DUCT MODEL EDH-807 AS MANUFACTURED BY ONEHEIM. INSTALL PER MANUFACTURER'S RECOMMENDED INSTALLATION INSTRUCTIONS. FLORIDA PRODUCT APPROVAL #100811. PROVIDE WITH GRID SCREEN, 1/4"X1/2" FLANGE, AND ALUMINUM MLL FINISH.
  - EMERGENCY SHUTOFF SWITCH AND WALL PLACARD INDICATING VENTILATION SYSTEM EMERGENCY SHUTOFF PROVIDED BY OTHERS. REFERENCE ELECTRICAL AND ARCHITECTURAL DRAWINGS.
  - INSTALL EXHAUST FAN PER DETAIL SHEET M3. FAN SHALL BE WIRED TO EMERGENCY SHUTOFF SWITCH PROVIDED BY OTHERS. REFERENCE ARCHITECTURAL AND ELECTRICAL DRAWINGS.
  - UNDERCUT DOOR 1" TO ALLOW FOR TRANSFER OF AIR.

| HVAC LEGEND |   |
|-------------|---|
| SYMBOL      | DESCRIPTION                             |
|             | NEW RECTANGULAR OR ROUND DUCT           |
|             | FLEXIBLE DUCT                           |
|             | SUPPLY AIR DUCTWORK UP THROUGH PLAN     |
|             | RETURN AIR DUCTWORK UP THROUGH PLAN     |
|             | EXHAUST AIR DUCTWORK UP THROUGH PLAN    |
|             | 90° ELBOW WITH TURNING VANES            |
|             | MANUAL AIR VOLUME CONTROL DAMPER        |
|             | 4 WAY SUPPLY DIFFUSER                   |
|             | 3 WAY SUPPLY DIFFUSER                   |
|             | 2 WAY OPPOSED SUPPLY DIFFUSER           |
|             | 2 WAY CORNER SUPPLY DIFFUSER            |
|             | RETURN AIR DEVICE                       |
|             | EXHAUST AIR DEVICE                      |
|             | AIR CURTAIN                             |
|             | LINEAR SLOT DIFFUSER WITH PLENUM        |
|             | COMBINATION TEMPERATURE/HUMIDITY SENSOR |
|             | TEMPERATURE SENSOR                      |
|             | CO2 SENSOR                              |
|             | TYPE MARK                               |
|             | MECHANICAL EQUIPMENT TAG                |
|             | CONDENSATE PIPING                       |
|             | ROOF MOUNTED EXHAUST FAN                |
|             | INLINE EXHAUST FAN                      |
|             | PACKAGED ROOFTOP AIR CONDITIONER        |

**CLIENT NAME**  
WAWA  
280 WEST BALTIMORE PIKE  
WAWA, PENNSYLVANIA 19083

**PROJECT NAME**  
WAWA F85FB 2017.01 STORE #5254-0KE  
ORKECHOBEE RD. & JENKINS RD.  
FT. PIERCE, FLORIDA

**SHEET TITLE**  
HVAC FLOOR PLAN

| Revision Schedule |                               |
|-------------------|-------------------------------|
| No.               | Description                   |
| A                 | PRELIMINARY                   |
| B                 | REVISED 01/01                 |
| C                 | PRE-BID REVIEW SET 07/26/2017 |
| D                 | BID SET 08/02/2017            |

**PROJECT NO.** 210009  
**DATE** 08-02-2017  
**DRAWN BY** JAW  
**CHECKED** JAW

**PROJECT NO.** 210009  
**DATE** 08-02-2017  
**DRAWN BY** JAW  
**CHECKED** JAW

**Scale:** 1/8" = 1'-0"

**Author:** JAW  
**Checker:** JAW  
**Date:** 08/02/2017

www.idling.com  
11/16/17