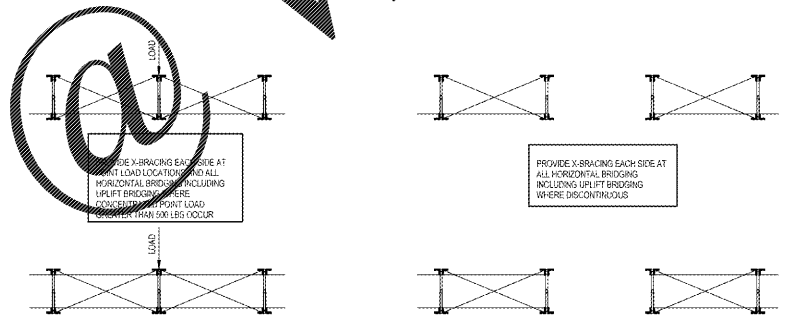
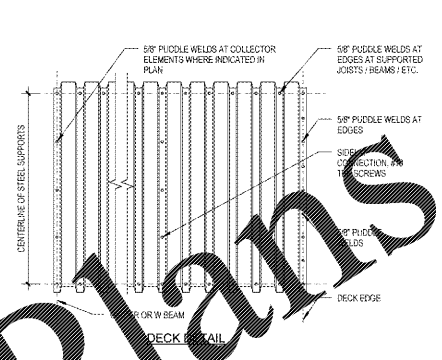
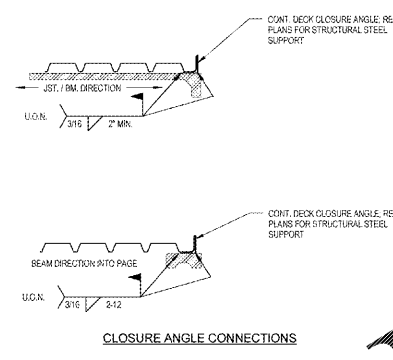
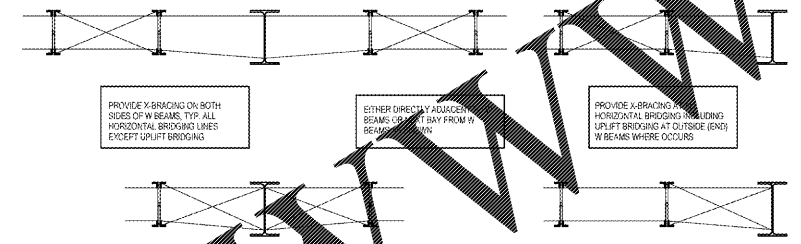
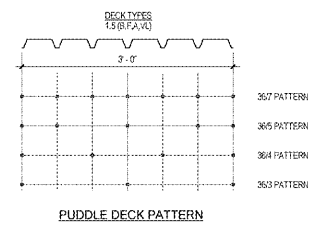


TOTAL WEIGHT	RTU SCHEDULE	HEADER	LEG A	LEG B
UP TO 150 LBS	NA	REF. SECTION A-A	3X16	L3X3X3/16
500 LBS	6\"/>			

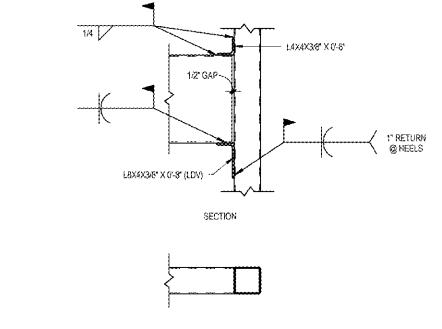
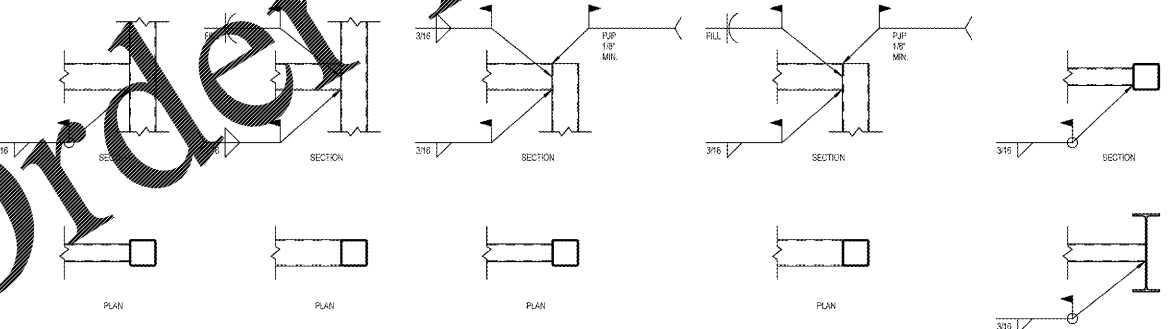
**1 GENERAL RTU INFORMATION**  
3/8" x 1/4"

MINIMUM DECK PROPERTIES	1.5 B
NOMINAL DEPTH: 1 1/2"	
TYPE B (MDE RIB) METAL DECK	
F <sub>y</sub> : 33 ksi	
22 GAUGE: H=0.028 IN (4PT), SP=0.188 IN (3 PT), SW=0.152 IN (3 PT)	
20 GAUGE: H=0.022 IN (4PT), SP=0.238 IN (3 PT), SW=0.287 IN (3 PT)	
18 GAUGE: H=0.015 IN (4PT), SP=0.315 IN (3 PT), SW=0.357 IN (3 PT)	



**2 GENERAL MTL. DECK & CLOSURE ANGLE INFORMATION**  
1" x 1/4"

**3 GENERAL BRIDGING AND BRACING INFORMATION**  
3/8" x 1/4"



**4 TYPICAL HSS TO HSS WELDS**  
3/8" x 1/4"

**5 HSS20X8 TO HSS CONNECTION**  
3/8" x 1/4"

Order Plans

WWW.LDLINE.COM

**LD Line**  
Contractors & Peterson  
Engineers  
Architects  
Interior Designers  
Professional Services  
10000 Woodloch Forest Dr.  
Baltimore, MD 21264  
Tel: 410-581-1400  
Fax: 410-581-1401  
www.ldline.com

CLIENT NAME  
**WAWA**  
280 WEST BALTIMORE PIKE  
WAWA, PENNSYLVANIA 19083

PROJECT NAME  
**WAWA F85FB 2017.01 STORE #5254-0KE**  
ORKECHOBEE RD. & JENKINS RD.  
FT. PIERCE, FLORIDA

Revision Schedule	
No.	Description
1	PRELIMINARY
2	REV. 2017.01
3	PRE-BID REVIEW SET
4	BID SET

SHEET NO. **S1.1**