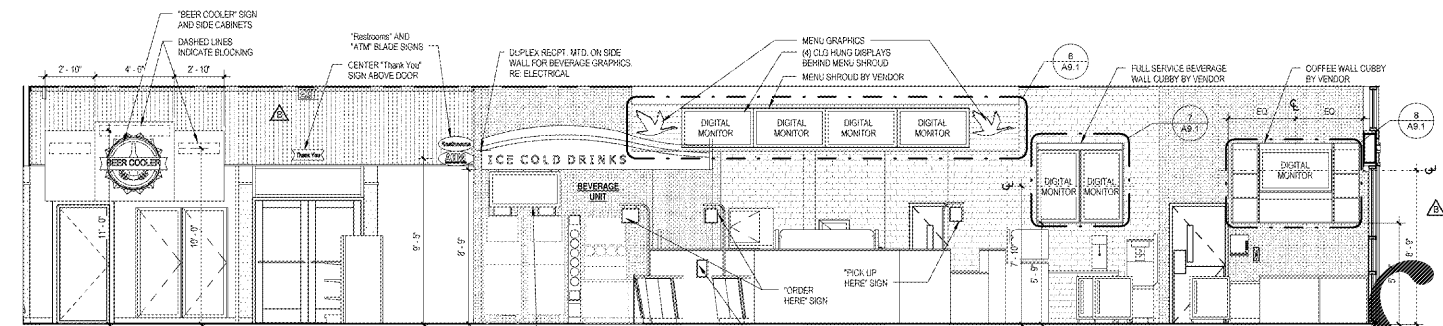
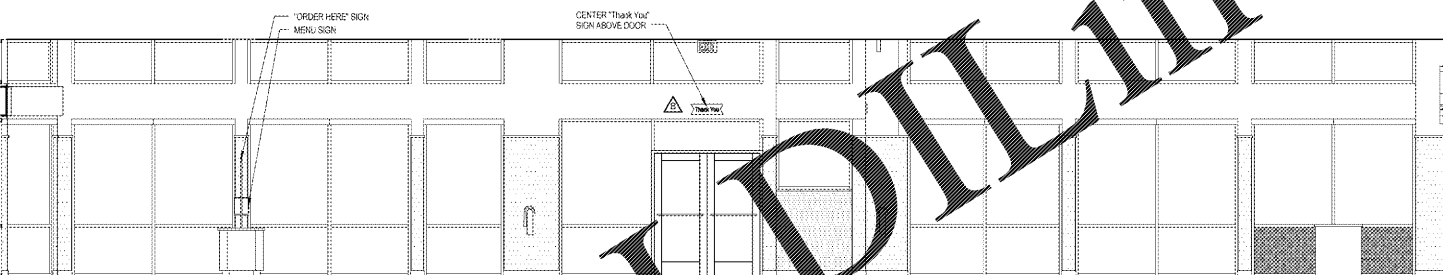


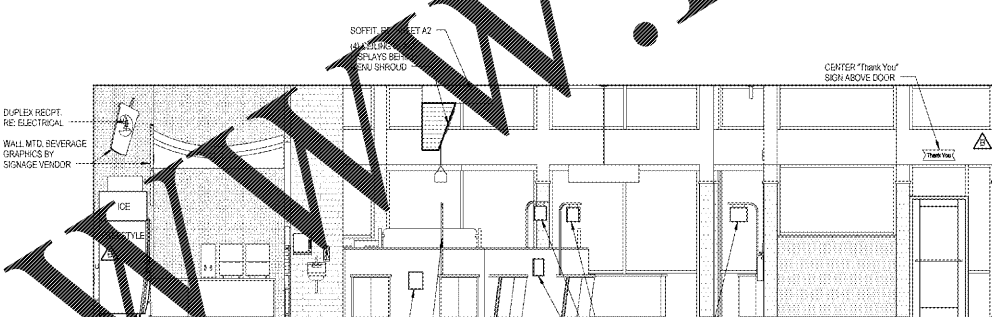
1 GRAPHICS PLAN  
G1  
18" x 14"



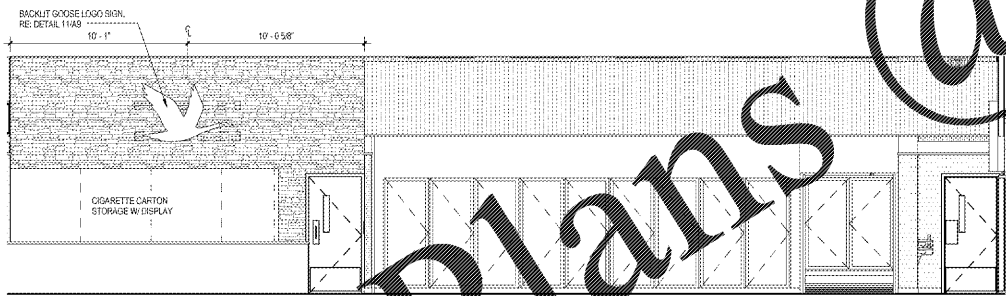
2 GRAPHICS ELEVATION  
G1  
18" x 14"



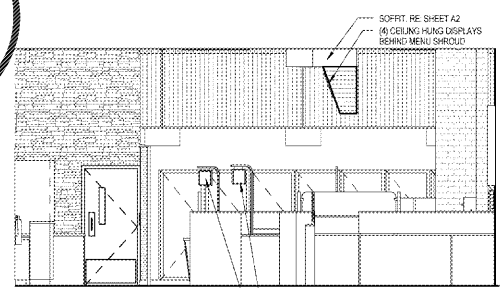
3 GRAPHICS ELEVATION  
G1  
18" x 14"



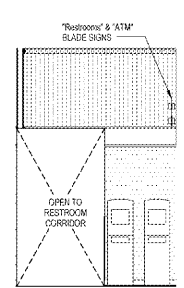
4 GRAPHICS ELEVATION  
G1  
18" x 14"



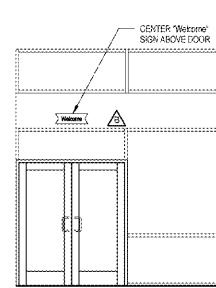
5 GRAPHICS ELEVATION  
G1  
18" x 14"



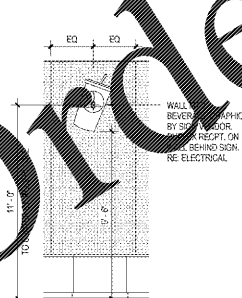
6 GRAPHICS ELEVATION  
G1  
18" x 14"



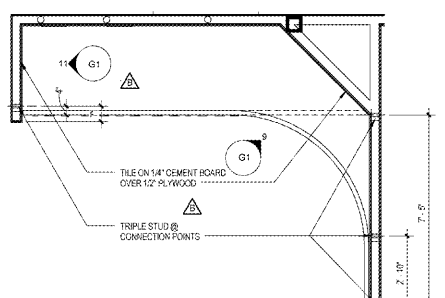
7 GRAPHICS ELEVATION  
G1  
18" x 14"



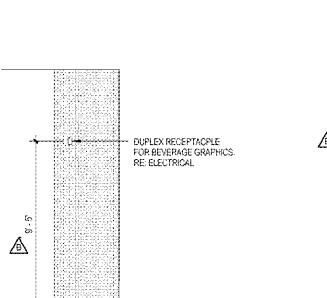
8 GRAPHICS ELEVATION  
G1  
18" x 14"



9 ELEVATION @ BEVERAGE AREA  
G1  
18" x 14"



13 PLAN @ BEVERAGE AREA GRAPHICS  
G1  
18" x 14"



11 EAST ELEVATION @ BEVERAGE AREA  
G1  
18" x 14"

| GRAPHICS LEGEND |                                  |
|-----------------|----------------------------------|
| GRAPHICS        | DESCRIPTION                      |
| THANK YOU       | WALL MOUNTED SIGN                |
| WELCOME         | WALL MOUNTED SIGN                |
| OPEN ONLY       | WALL MOUNTED SIGN                |
| CLD HUNG        | DIGITAL MONITOR, CEILING MOUNTED |
| MB              | MENU BOARD, BACKER BOARD MOUNTED |

- GENERAL NOTES**
- LETTER GRAPHICS ARE FURNISHED AND INSTALLED BY OTHERS.
  - MENU BOARDS ARE FURNISHED BY OTHERS AND INSTALLED BY CC.
  - DIGITAL MONITOR, BRACKET, AND COLUMN MOUNT SUPPORT ARE TO BE FURNISHED BY WAWA AND INSTALLED BY CC. COORDINATOR SHALL COORDINATE AND INSTALL NECESSARY MISCELLANEOUS STEEL FOR COLUMN MOUNT ATTACHMENT.
  - DIGITAL MONITOR CEILING HUNG LOCATION DIMENSIONS SHOWN ON PLAN ARE TO THE CENTER OF COLUMN SUPPORT AND SHOULD BE VERIFIED IN THE FIELD.
  - WAWA REPRESENTATIVE TO VERIFY FINAL LOCATION OF ALL GRAPHICS.
  - SEE FLOOR PLAN FOR LOCATIONS AND GRAPHICS REQUIRED.

**WAWA**  
Planners  
Architects  
Interior Designers  
10000 Woodloch Forest Dr.  
Atlanta, GA 30338  
404.487.1111

CLIENT NAME: **WAWA**  
260 WEST BALTIMORE PIKE  
WAWA, PENNSYLVANIA 19063

PROJECT NAME: **WAWA F85FB 2017.01 STORE #5254-OKE**  
OKEECHOBEE RD & JENKINS RD.  
FT. PIERCE, FLORIDA

SHEET TITLE: **GRAPHICS PLAN AND ELEVATIONS**

| NO. | DESCRIPTION | DATE       |
|-----|-------------|------------|
| 1   | PRELIMINARY | 08/08/2017 |
| 2   | REVISED     | 08/08/2017 |
| 3   | REVISED     | 08/08/2017 |
| 4   | REVISED     | 08/08/2017 |
| 5   | REVISED     | 08/08/2017 |
| 6   | REVISED     | 08/08/2017 |
| 7   | REVISED     | 08/08/2017 |
| 8   | REVISED     | 08/08/2017 |
| 9   | REVISED     | 08/08/2017 |
| 10  | REVISED     | 08/08/2017 |
| 11  | REVISED     | 08/08/2017 |
| 12  | REVISED     | 08/08/2017 |
| 13  | REVISED     | 08/08/2017 |
| 14  | REVISED     | 08/08/2017 |
| 15  | REVISED     | 08/08/2017 |
| 16  | REVISED     | 08/08/2017 |
| 17  | REVISED     | 08/08/2017 |
| 18  | REVISED     | 08/08/2017 |
| 19  | REVISED     | 08/08/2017 |
| 20  | REVISED     | 08/08/2017 |
| 21  | REVISED     | 08/08/2017 |
| 22  | REVISED     | 08/08/2017 |
| 23  | REVISED     | 08/08/2017 |
| 24  | REVISED     | 08/08/2017 |
| 25  | REVISED     | 08/08/2017 |
| 26  | REVISED     | 08/08/2017 |
| 27  | REVISED     | 08/08/2017 |
| 28  | REVISED     | 08/08/2017 |
| 29  | REVISED     | 08/08/2017 |
| 30  | REVISED     | 08/08/2017 |
| 31  | REVISED     | 08/08/2017 |
| 32  | REVISED     | 08/08/2017 |
| 33  | REVISED     | 08/08/2017 |
| 34  | REVISED     | 08/08/2017 |
| 35  | REVISED     | 08/08/2017 |
| 36  | REVISED     | 08/08/2017 |
| 37  | REVISED     | 08/08/2017 |
| 38  | REVISED     | 08/08/2017 |
| 39  | REVISED     | 08/08/2017 |
| 40  | REVISED     | 08/08/2017 |
| 41  | REVISED     | 08/08/2017 |
| 42  | REVISED     | 08/08/2017 |
| 43  | REVISED     | 08/08/2017 |
| 44  | REVISED     | 08/08/2017 |
| 45  | REVISED     | 08/08/2017 |
| 46  | REVISED     | 08/08/2017 |
| 47  | REVISED     | 08/08/2017 |
| 48  | REVISED     | 08/08/2017 |
| 49  | REVISED     | 08/08/2017 |
| 50  | REVISED     | 08/08/2017 |

PROJECT NO.: 210503  
DATE: 08/08/2017  
DRAWN: JAC  
CHECKED: JAC  
DATE: 08/08/2017

**G1**