

THOMAS

SIGN & AWNING CO INC

4590 118TH Avenue North
Clearwater, Florida 33762

800-526-3325

www.thomassign.com

CLIENT

WAWA

Design Number:
57211 F PROD GAS SPAN

Installation Address:

SR 70 (Okeechobee) & Jenkins
Fort Pierce, FL

Project Identity Number:
64154

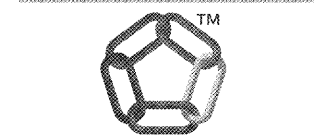
Sales Associate: Project Team:

TSA Brynn

Designer: Date:

SLD 09-09-15

Project Updates:



3MTM MCSTM Warranty



Approval:

Approved
DATE: _____

Approved as noted
DATE: _____

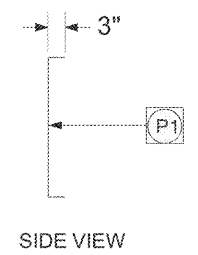
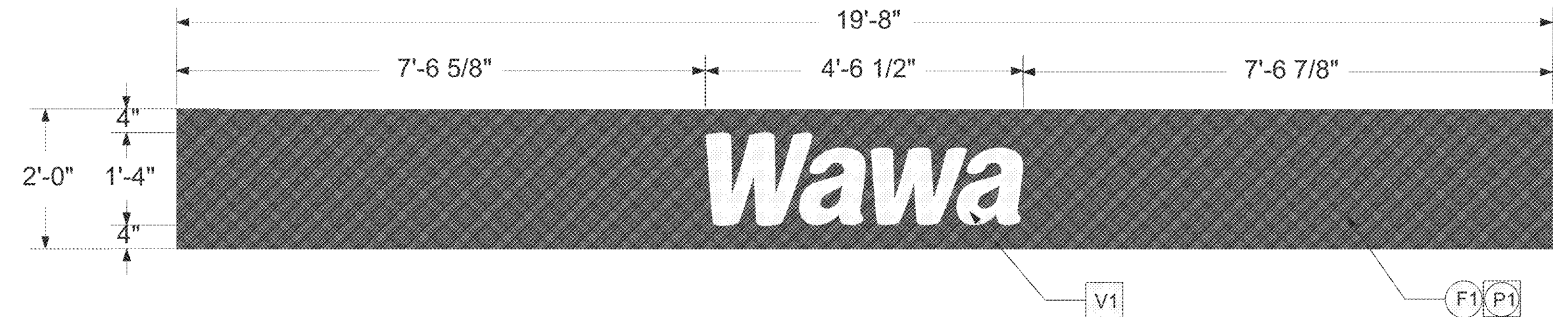
Revise & Re-Submit
DATE: _____

The designs, concepts, drawings and specifications provided are the exclusive property of Thomas Sign & Awning Company and may not be reproduced in any way, shape or fashion without the express written permission of Thomas Sign & Awning Co.

Page Sheet

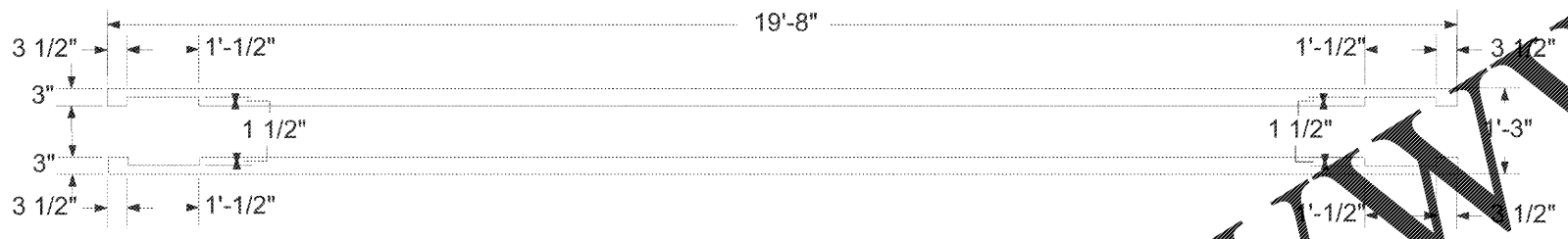
7 7 of 7

Local: 727-573-7757
Fax: 727-573-0328



E S/F Brake formed Alum. Gas Pump Canopy Spanner Panel

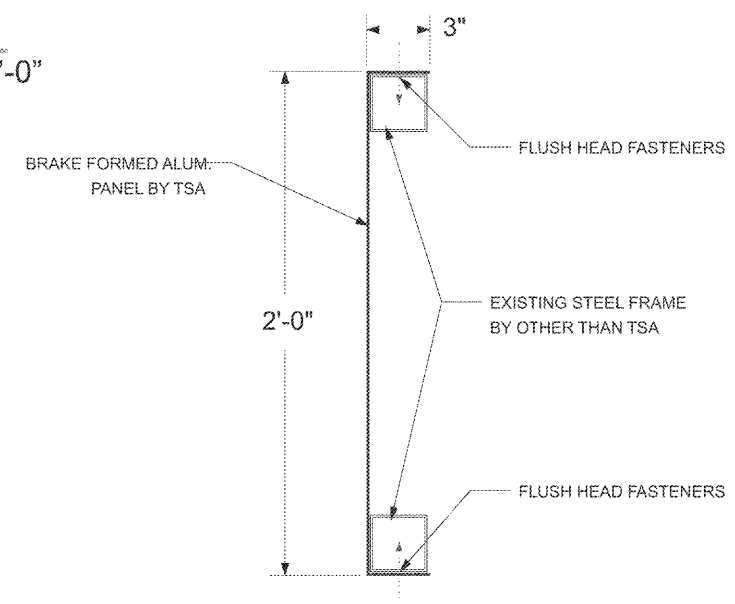
SCALE: 3/8" = 1'-0"



E Top View - Section Detail

Frame to be secured top & bottom around periphery of panel to existing structure / frame every 16" c/c with #8 x 3/4" S.S. tek screws.

SCALE: 3/8" = 1'-0"



Mounting Detail
SCALE: NTS

Order Plans @

WWW.LDILLI

- (F1) FABRICATION NOTES TOTAL SQFT = 6.06'
 - (V1) VINYL COLORS PART # WAWAPNL2X19AL2 ESTIMATE # 113917
 - (P1) PAINT NOTES Material for Alum. Gas Spanner
 - (E1) ELECTRICAL NOTES
- FACE TYPE: 125" ALUMINUM
- QUANTITY: 2
- FRAMING: STEEL CONSTRUCTED FRAMING BY OTHERS
- GRAPHIC PAINT FROM VINYL GRAPHICS 1ST SURFACE
- Fabrication Notes**
- 1) 125" BRAKE FORMED ALUMINUM PANEL WITH CUT OUT NOTATIONS FOR INSTALLATION OVER EXISTING COLUMNS.
- 2) X
- Akzo Nobel Paint Colors**
- 1) TO MATCH PMS #187C - GLOSS
- 2) X
- Vinyl Color**
- 1) 3M #7725-10 WHITE - OPAQUE (1ST SURFACE)
- 2) X