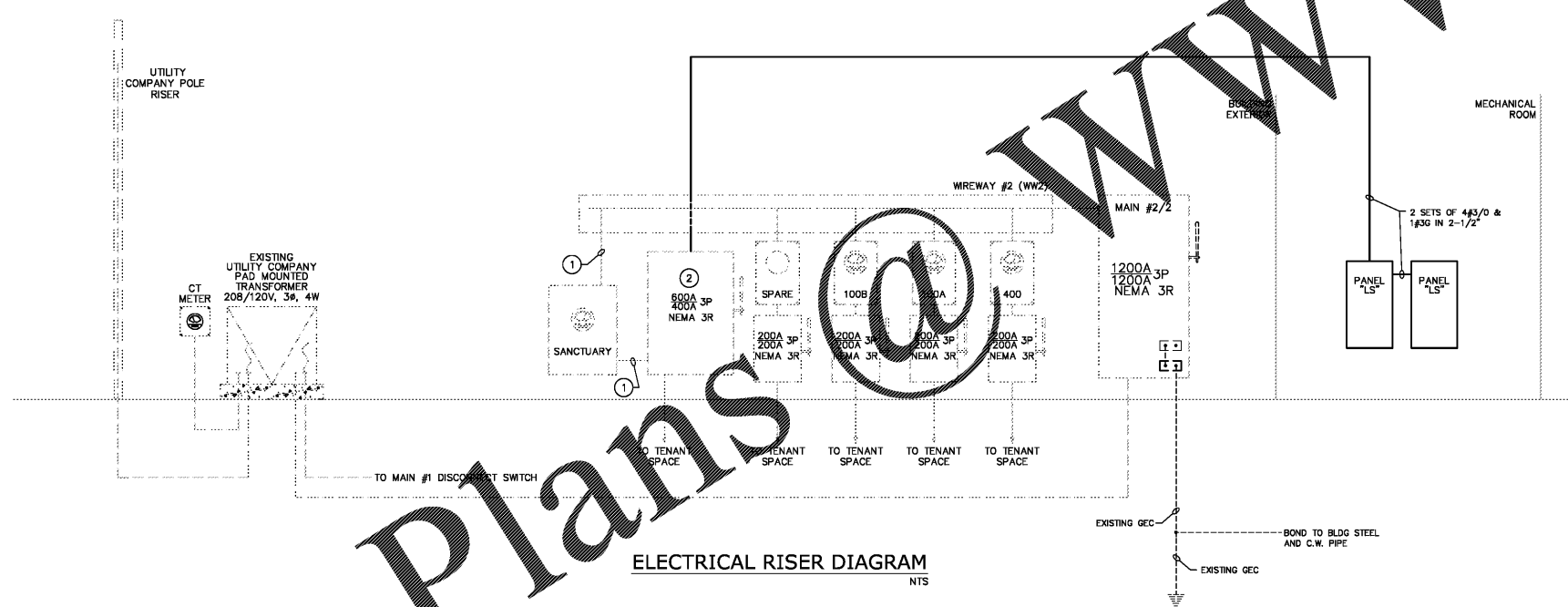


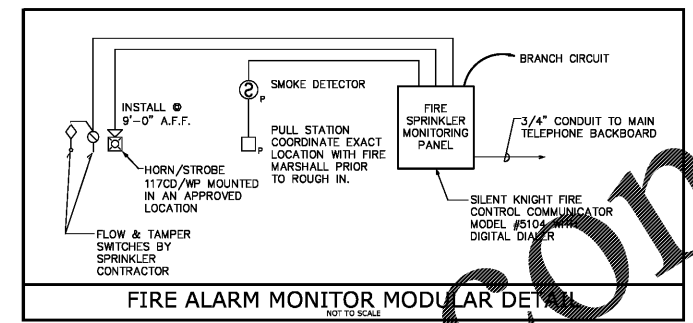
EXISTING ELECTRICAL RISER DIAGRAM
NTS

RISER KEY NOTES

- CONTRACTOR TO FIELD VERIFY IF EXISTING CONDUCTORS ARE PRESENT. IF NO CONDUCTORS ARE INSTALLED, PROVIDE NEW CONDUCTORS, 2 SETS OF 4#3/0 & 1#30 AND CONNECT FOR OPERATION. COORDINATE METER REQUIREMENTS WITH LOCAL UTILITY.
- PROVIDE NEW FUSES WITH LIMITED LET THRU FAULT CURRENT TIMES AS INDICATED IN EXISTING DISCONNECT SWITCHES. CONNECT FOR OPERATION.



ELECTRICAL RISER DIAGRAM
NTS



SANCTUARY LOAD SUMMARY-ELECTRICAL SERVICE

RECEPTACLE LOAD (65 REC. AT 180VA)	= 11.7 KVA	RECEPTACLES: 100%	= 11.7 KVA
GENERAL LIGHTING PER 220-42 (5,939 SQ. FT. X 2W/SQ. FT.)	= 4.0 KVA	GENERAL LIGHTING (11.9 KVA) @ 1.25%	= 15.0 KVA
MECHANICAL LOAD (LARGEST MOTOR 4 HP)	= 4.0 KVA	KITCHEN EQUIPMENT (10.0 KVA) @ 65%	= 6.5 KVA
KITCHEN EQUIPMENT	= 10.0 KVA	MISC A/V EQUIPMENT	= 8.0 KVA
MISC A/V EQUIPMENT	= 8.0 KVA	TOTAL LOADS	81.2 KVA
		NEW SERVICE	208 VOLT, 3Ø, 4W, 400 AMP

SCHEDULE OF BRANCH CIRCUIT PANEL

CIRCUIT DESCRIPTION	WIRE	GROUND	CONDUIT	BREAKER	CIRCUIT	"LS" SECTION #1			CIRCUIT	BREAKER	CONDUIT	GROUND	WIRE	A/C SYMMETRICAL: 22,000 VOLTS; 208/120V, 3Ø, 4 WIRE	CIRCUIT DESCRIPTION
						A PHASE KVA	B PHASE KVA	C PHASE KVA							
LIGHTING, STOR/DECISION RM	2#12	1#12	3/4"	20	1	0.7	3.6		2	30	3/4"	1#10	3#8	RECEPT., DBL OVEN	
LIGHTING, BREAK/VIEW/PANTRY	2#12	1#12	3/4"	20	3		1.1	3.6	4	2				RECEPT., BREAK RM DISP	
LIGHTING, SANCTUARY	2#12	1#12	3/4"	20	5			1.3	0.8	6				RECEPT., BREAK RM DW	
LIGHTING, SANCTUARY	2#12	1#12	3/4"	20	7	1.0	0.6		8	2				RECEPT., BREAK RM CNTR	
LIGHTING, SANCTUARY	2#12	1#12	3/4"	20	9			1.0	0.6	10	20	3/4"	1#12	2#12	RECEPT., BREAK RM CNTR
LIGHTING, SANCTUARY STAGE	2#12	1#12	3/4"	20	11			1.0	0.6	12	20	3/4"	1#12	2#12	RECEPT., BREAK RM MICRO
LIGHTING, SANCTUARY STAGE	2#12	1#12	3/4"	20	13			1.0	0.6	14	20	3/4"	1#12	2#12	RECEPT., BREAK RM REF
LIGHTING, SANCTUARY STAGE	2#12	1#12	3/4"	20	15			1.0	0.6	16	20	3/4"	1#12	2#12	RECEPT., BREAK RM COFFEE
LIGHTING, SANCTUARY EM	2#12	1#12	3/4"	20	19	0.6	0.6		20	20	3/4"	1#12	2#12	RECEPT., BREAK RM ICE	
LIGHTING, SIGNAGE	2#12	1#12	3/4"	20	21			0.6		22	20			SPARE	
SPARE	2#12	1#12	3/4"	20	23					24	20			SPARE	
AHU-1	2#12	1#12	3/4"	15	25	0.5				26	20			SPARE	
CU-1	2#10	1#10	3/4"	30	27			1.4	0.2	28	20	3/4"	1#12	2#12	RECEPT., VEST CNTR
					29			1.4	0.2	30	20	3/4"	1#12	2#12	RECEPT., VEST CNTR
RTU-1	3#6	1#10	1"	60	31	5.3	0.6			32	20	3/4"	1#12	2#12	RECEPT., VEST REF
					34			5.3		35				SPARE	
RTU-2	3#6	1#10	1"	60	37	5.3	0.1			38	20	3/4"	1#12	2#12	GAS WATER HTR
					39			5.3		40	20	3/4"	1#12	2#12	STAGE CHAIR LIFT
					41			5.3		42				SPARE	
					21.2	21.8	19.6			KVA TOTAL PER PHASE SECTION 1					
					5.1	5.8	4.6			KVA TOTAL PER PHASE SECTION 2					
					26.3	27.7	24.2			KVA TOTAL PER PHASE					
					219	233	208			AMPS TOTAL PER PHASE					
							78.2			KVA TOTAL					

SCHEDULE OF BRANCH CIRCUIT PANEL

CIRCUIT DESCRIPTION	WIRE	GROUND	CONDUIT	BREAKER	CIRCUIT	"LS" SECTION #2			CIRCUIT	BREAKER	CONDUIT	GROUND	WIRE	A/C SYMMETRICAL: 22,000 VOLTS; 208/120V, 3Ø, 4 WIRE	CIRCUIT DESCRIPTION
						A PHASE KVA	B PHASE KVA	C PHASE KVA							
RECEPT., VIEW RM	2#12	1#12	3/4"	20	43	0.4	0.8		44	20	3/4"	1#12	2#12	RECEPT., STOR RM/ROOF	
RECEPT., VIEW RM/STOR	2#12	1#12	3/4"	20	45			0.8	1.0	46	20	3/4"	1#12	2#12	RECEPT., DECISION RM
RECEPT., SANCTUARY	2#12	1#12	3/4"	20	47			1.0		48	20			SPARE	
FS MONITOR PNL	2#12	1#12	3/4"	20	49	0.1				50	20			SPARE	
SPARE					51					52	20			SPARE	
RECEPT., STAGE	2#12	1#12	3/4"	20	53					54	20	3/4"	1#12	2#12	RECEPT., PROJECTOR
RECEPT., STAGE	2#12	1#12	3/4"	20	57	0.6	0.2			58	20	3/4"	1#12	2#12	RECEPT., VIDEO CAMERA
RECEPT., STAGE	2#12	1#12	3/4"	20	59			0.6	0.2	60	20	3/4"	1#12	2#12	RECEPT., CEILING
RECEPT., STAGE	2#12	1#12	3/4"	20	61	0.6	0.2			62	20	3/4"	1#12	2#12	RECEPT., CEILING
RECEPT., STAGE	2#12	1#12	3/4"	20	63			0.6	0.4	64	20	3/4"	1#12	2#12	RECEPT., STAGE TVS
RECEPT., STAGE	2#12	1#12	3/4"	20	65			0.6		66	20			SPARE	
RECEPT., STAGE	2#12	1#12	3/4"	20	67	0.6				68	20			SPARE	
SPARE					69					70	20			SPARE	
RECEPT., SANCTUARY	2#12	1#12	3/4"	20	71					72	20			SPARE	
RECEPT., A/V	2#12	1#12	3/4"	20	73	1.0				74	20			SPARE	
RECEPT., A/V	2#12	1#12	3/4"	20	75			0.6		76				SPARE	
RECEPT., A/V	2#12	1#12	3/4"	20	77			0.6		78				SPARE	
RECEPT., A/V	2#12	1#12	3/4"	20	79	0.6				80				SPARE	
RECEPT., A/V	2#12	1#12	3/4"	20	81			0.6	1.0	82	15	3/4"	1#10	2#10	H-1
SPARE					84					84					
					5.1	5.8	4.6			KVA TOTAL PER PHASE					
					43	50	38			AMPS TOTAL PER PHASE					
							15.5			KVA TOTAL					

Order Plans

Project Title:
ADDITION TO CANVAS CHURCH
3560 BROWN'S BRIDGE ROAD
CUMMING, GA 30028

Drawing Title:
ELECTRICAL RISER AND
PANEL SCHEDULES

Seal:
PROMUS
SCOTT MERIWETHER, P.E.
GEORGIA LICENSE #30780
518 BLACK CANYON PARK
CANTON, GA 30114
PROJECT MANAGER: SCOTT MERIWETHER
PHONE 678.246.5166

Revisions

Impact
DESIGN-BUILD
Contractors

PH&A
Patrick Higgins
& Assoc
ARCHITECTS

9195 Duran Circle
Gainesville, Georgia 30506
(770)641-7583

Project No:
E5.1

Copyright © 2017, PH&A
Sheet ___ of ___

Not Released for Construction Date: 03APR17