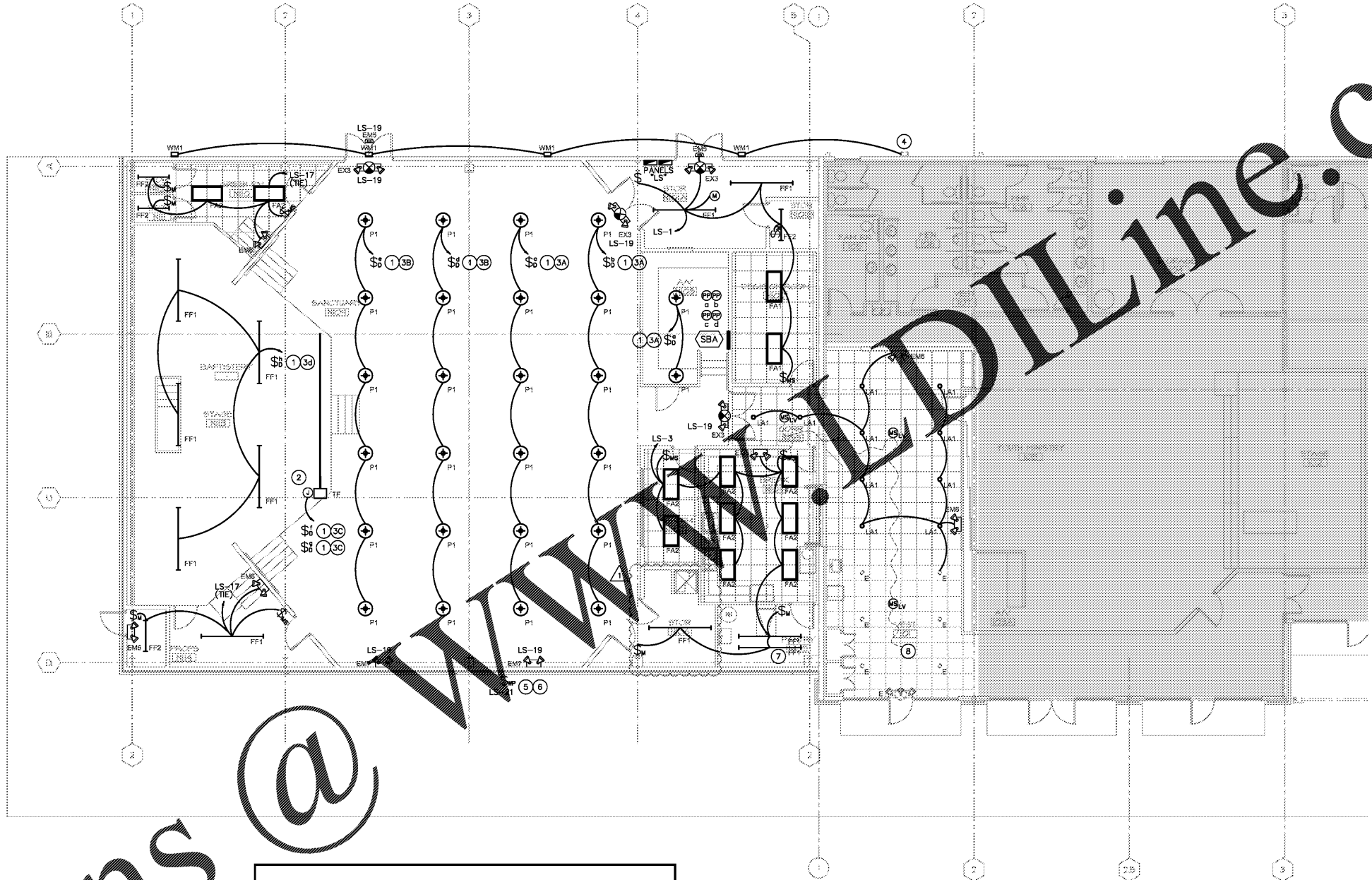


www.diline.com

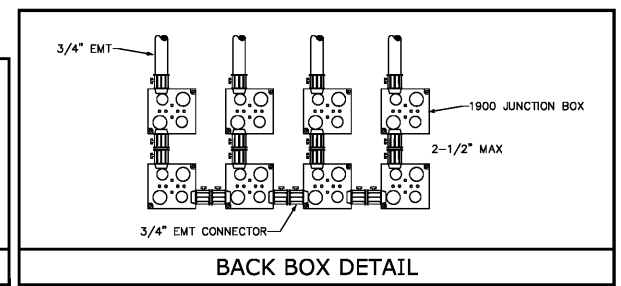


- KEY NOTES**
- 1 WIRE CIRCUIT THRU SWITCH BANK "SBA".
 - 2 LIGHTBAR FIXTURE FOR STAGE. COORDINATE EXACT LOCATION WITH OWNER PRIOR TO ROUGH-IN AND CONNECT FOR OPERATION. TWO BRANCH CIRCUITS REQUIRED.
 - 3A WIRE CIRCUIT THRU POWERPACK "a" AND CONNECT FOR OPERATION. POWER PACK TO ENABLE SWITCHBANK "SBA" OPERATION.
 - 3B WIRE CIRCUIT THRU POWERPACK "b" AND CONNECT FOR OPERATION. POWER PACK TO ENABLE SWITCHBANK "SBA" OPERATION.
 - 3C WIRE CIRCUIT THRU POWERPACK "c" AND CONNECT FOR OPERATION. POWER PACK TO ENABLE SWITCHBANK "SBA" OPERATION.
 - 3D WIRE CIRCUIT THRU POWERPACK "d" AND CONNECT FOR OPERATION. POWER PACK TO ENABLE SWITCHBANK "SBA" OPERATION.
 - 4 APPROXIMATE LOCATION OF EXISTING WALL PACK LIGHT FIXTURE. INTERCEPT EXISTING EXTERIOR LIGHTING BRANCH CIRCUIT WITH NEW WIRING AS REQUIRED AND CONNECT FOR OPERATION. CONTRACTOR TO FIELD VERIFY LOAD ON EXISTING BRANCH CIRCUIT. PROVIDE NEW BRANCH CIRCUIT AS NEEDED IF ADDITIONAL LIGHTING EXCEEDS CIRCUIT BREAKER LIMITATION.
 - 5 DISCONNECTING MEANS MOUNTED AT BUILDING SIGNAGE. SWITCH TO BE ACCESSIBLE, EITHER INCORPORATED INTO OR ADJACENT TO SIGNAGE. NOT IN DIRECT LINE OF SIGHT FROM GROUND LEVEL. COORDINATE LOCATION WITH SIGN INSTALLER PRIOR TO ROUGH IN AND CONNECT SIGN FOR OPERATION.
 - 6 WIRE CIRCUIT THRU TIME CLOCK "TC-1". PROVIDE AN INTERMEDIATE "ET100" TIMECLOCK IN A NEMA ONE ENCLOSURE.
 - 7 LIGHT FIXTURE LOCATED AT MEZZANINE LEVEL. CONTROL WITH SWITCH IN STORAGE ROOM N106. LOCATE FIXTURE IN CENTER OF SPACE, SHOWN AS INDICATED FOR CLARITY.
 - 8 EXTEND NEW CONTROL WIRING TO NEAREST MOTION SENSOR IN HALLWAY AS REQUIRED AND CONNECT FOR OPERATION.
 - 9 EXTEND NEW CONTROL WIRING TO NEAREST MOTION SENSOR IN HALLWAY AS REQUIRED AND CONNECT FOR OPERATION.

SWITCHBANK "SBA"

LS-1	LS-3	LS-7	LS-9
LS-11	LS-13	LS-15	LS-17

REFER TO BACK BOX DETAIL FOR SWITCH LAYOUT



1 LIGHTING PLAN
E2.1 1/8"=1'-0"

Order Plans

Project Title:
ADDITION TO CANVAS CHURCH
3560 BROWN'S BRIDGE ROAD
CUMMING, GA 30028

Drawing Title:
LIGHTING PLAN

PROMUS
SCOTT MERIWETHER, P.E.
GEORGIA LICENSE #30780
518 BLACK CANYON PARK
CANTON, GA 30114
PROJECT MANAGER: SCOTT MERIWETHER
PHONE 678.246.5166



Impact
DESIGN-BUILD
Contractors

PH&A
Patrick Higgins
& Assoc
ARCHITECTS

9195 Duron Circle
Gainesville, Georgia 30506
(770)641-7583
Project No: _____

Revisions	REVISION/COMMENTS
0-31-17	1

These drawings are instruments of the Architect's service for use solely with respect to this project. These drawings shall not be used by the Owner or others on other projects, additions to this project or completion of this project by others except by written agreement.

Copyright © 2017, PH&A

Sheet **E2.1** of _____