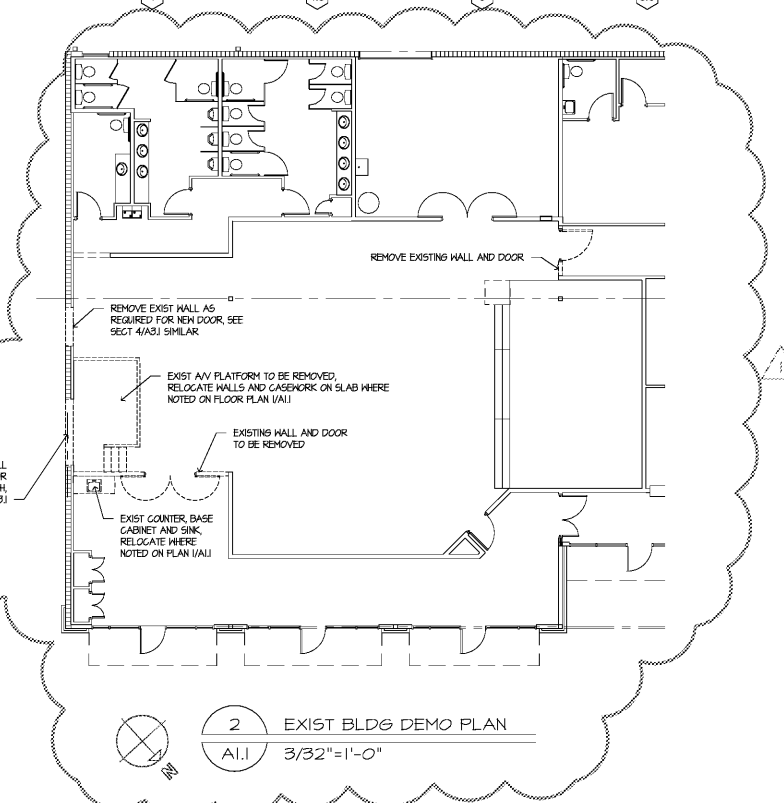
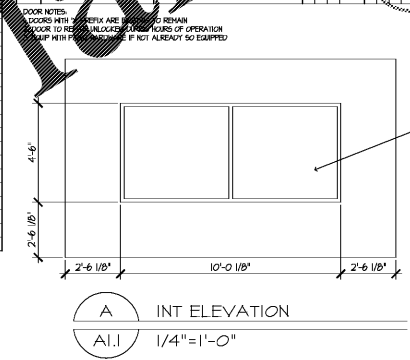


- PARTITION TYPES NOTED P-# ON FLOOR PLAN**
- 600525-18 STDS AT 18" O/C, 1/2" GHD EACH SIDE TO UNDERSIDE OF ROOF DECK, INSULATE W/ R19 FIBERGLAS BATT FULL HEIGHT
 - 600525-18 STDS AT 18" O/C, 1/2" GHD EACH SIDE TO 10'-4" AFF, R19 FIBERGLAS BATT INSULATION FULL HEIGHT, BRACE TO STRUCTURE ABOVE 14'-0" O/C
 - 362925-18 STDS AT 18" O/C, FRAMED AGAINST EXISTING CHL 1/2" GHD FINISHED SIDE, TO 10'-4" AFF
 - 362925-18 STDS AT 18" O/C, 1/2" GHD EACH SIDE TO 10'-4" AFF, R19 FIBERGLAS BATT INSULATION FULL HEIGHT, BRACE TO STRUCTURE ABOVE 14'-0" O/C
 - 600525-18 STDS AT 18" O/C, 1/2" GHD EACH SIDE TO UNDERSIDE OF ROOF DECK, BRACE TO STRUCTURE ONLY, MAKE NO CONNECTIONS TO ROOF
 - EXISTING PARTITION TO REMAIN

- LEGEND**
- 2A10BC DRY CHEMICAL FIRE EXTINGUISHER IN CABINET, MTD 40" AFF
 - CLASS K FIRE EXTINGUISHER, HALL MTD 40" AFF

FINISH SCHEDULE		FLOORS				CEILING	
RM NO	FLOORS	BASE	WALLS	CEILING	FINISH	HEIGHT	INSUL
101		SEAL'D CONCRETE	SEAL'D CONCRETE				
103A		CONCRETE ON PAD	CONCRETE ON PAD				
103B		CONCRETE ON PAD	CONCRETE ON PAD				
103C		CONCRETE ON PAD	CONCRETE ON PAD				
103D		CONCRETE ON PAD	CONCRETE ON PAD				
103E		CONCRETE ON PAD	CONCRETE ON PAD				
103F		CONCRETE ON PAD	CONCRETE ON PAD				
103G		CONCRETE ON PAD	CONCRETE ON PAD				
103H		CONCRETE ON PAD	CONCRETE ON PAD				
103I		CONCRETE ON PAD	CONCRETE ON PAD				
103J		CONCRETE ON PAD	CONCRETE ON PAD				
103K		CONCRETE ON PAD	CONCRETE ON PAD				
103L		CONCRETE ON PAD	CONCRETE ON PAD				
103M		CONCRETE ON PAD	CONCRETE ON PAD				
103N		CONCRETE ON PAD	CONCRETE ON PAD				
103O		CONCRETE ON PAD	CONCRETE ON PAD				
103P		CONCRETE ON PAD	CONCRETE ON PAD				
103Q		CONCRETE ON PAD	CONCRETE ON PAD				
103R		CONCRETE ON PAD	CONCRETE ON PAD				
103S		CONCRETE ON PAD	CONCRETE ON PAD				
103T		CONCRETE ON PAD	CONCRETE ON PAD				
103U		CONCRETE ON PAD	CONCRETE ON PAD				
103V		CONCRETE ON PAD	CONCRETE ON PAD				
103W		CONCRETE ON PAD	CONCRETE ON PAD				
103X		CONCRETE ON PAD	CONCRETE ON PAD				
103Y		CONCRETE ON PAD	CONCRETE ON PAD				
103Z		CONCRETE ON PAD	CONCRETE ON PAD				

DOOR SCHEDULE		DETAILS		MATERIALS		REMARKS	
NO.	SIZE	TYP	USE	DOOR	FRAME	FINISH	REMARKS
A1	3'-0" X 7'-0"	STOREFRONT		ALUMINUM	ALUMINUM	ALUMINUM	1. FINISH TO BE LEADER AGREED PER AIA 1011 2. CUSTOMER OPERATED BY LEVER 3. FIN. FINISHED INSIDE OF
A2	3'-0" X 7'-0"	STOREFRONT		ALUMINUM	ALUMINUM	ALUMINUM	1. FINISH TO BE LEADER AGREED PER AIA 1011 2. CUSTOMER OPERATED BY LEVER 3. FIN. FINISHED INSIDE OF
B1	3'-0" X 7'-0"	OFFICE		ALUMINUM	ALUMINUM	ALUMINUM	R19, SURF SOLTS AND ASTRAHAL INACTIVE LEAF
B2	3'-0" X 7'-0"	OFFICE		ALUMINUM	ALUMINUM	ALUMINUM	R19, SURF SOLTS AND ASTRAHAL INACTIVE LEAF
C1	3'-0" X 7'-0"	PASSAGE		ALUMINUM	ALUMINUM	ALUMINUM	R19, SURF SOLTS AND ASTRAHAL INACTIVE LEAF
C2	3'-0" X 7'-0"	PASSAGE		ALUMINUM	ALUMINUM	ALUMINUM	R19, SURF SOLTS AND ASTRAHAL INACTIVE LEAF
D1	3'-0" X 7'-0"	RESTROOM		ALUMINUM	ALUMINUM	ALUMINUM	R19, SURF SOLTS AND ASTRAHAL INACTIVE LEAF
D2	3'-0" X 7'-0"	RESTROOM		ALUMINUM	ALUMINUM	ALUMINUM	R19, SURF SOLTS AND ASTRAHAL INACTIVE LEAF
F1	3'-0" X 7'-0"	PERSONNEL		ALUMINUM	ALUMINUM	ALUMINUM	R19, SURF SOLTS AND ASTRAHAL INACTIVE LEAF
F2	3'-0" X 7'-0"	PERSONNEL		ALUMINUM	ALUMINUM	ALUMINUM	R19, SURF SOLTS AND ASTRAHAL INACTIVE LEAF



Order Plans @ WWW.LDLINE.COM

Project Title:
ADDITION TO CANVAS CHURCH
3560 BROWN'S BRIDGE ROAD
CUMMING, GA 30028

Drawing Title:
OVERALL FLOOR PLAN



Revisions
8-15-17 | OWNER REVS

Impact DESIGN-BUILD Contractors
PHA Patrick Higgins ARCHITECTS
9195 Duran Circle, Gainesville, Georgia 30505 (770)641-7583
Project No: A.I.I.
Copyright © 2017, PH&A Sheet of