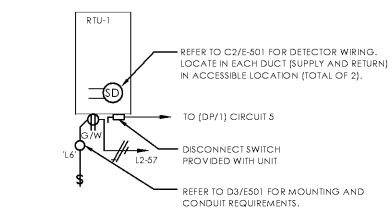


NOTES:
1. REFER TO DETAIL C3/E-501 AND C2/E-501 FOR WIRING.

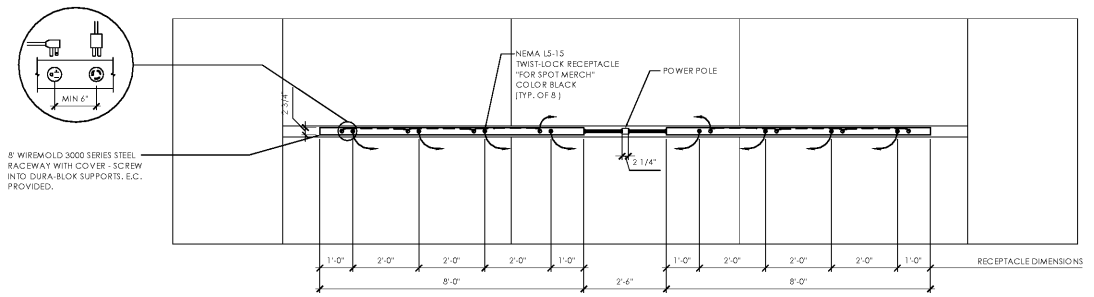
D3 RTU Service Light Mounting Detail
SCALE: N.T.S.



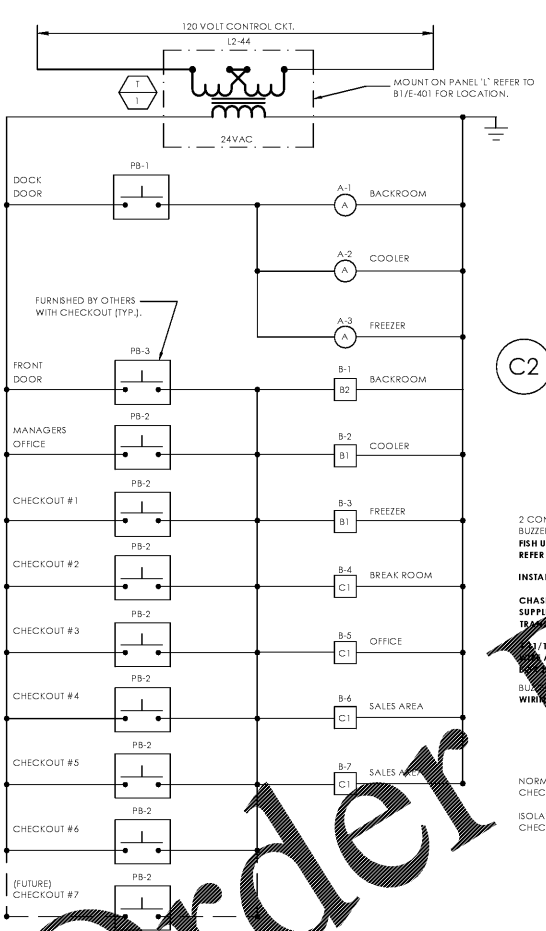
NOTES:
1. COORDINATE LOCATION OF DISCONNECT WITH MECHANICAL CONTRACTOR. ROUTE CONDUIT THRU ROOF. SEAL ROOF PENETRATION WATER TIGHT USING METHOD APPROVED BY ROOFING MANUFACTURER. DO NOT PENETRATE DRAIN PAN WITH CONDUITS.
2. REFER TO SHEET E-201 FOR LOCATION.

C3 RTU-1 Detail
SCALE: N.T.S.

NOTE:
CONTRACTOR SHALL FIELD VERIFY RECEPTACLE TYPE REQUIRED FOR SPOT MERCHANDISER UNIT.

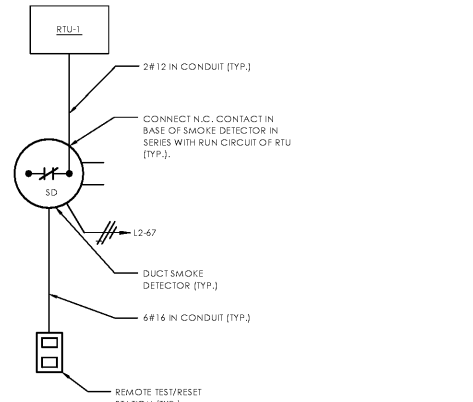


B3 Spot Merchandiser Raceway Detail
SCALE: N.T.S.



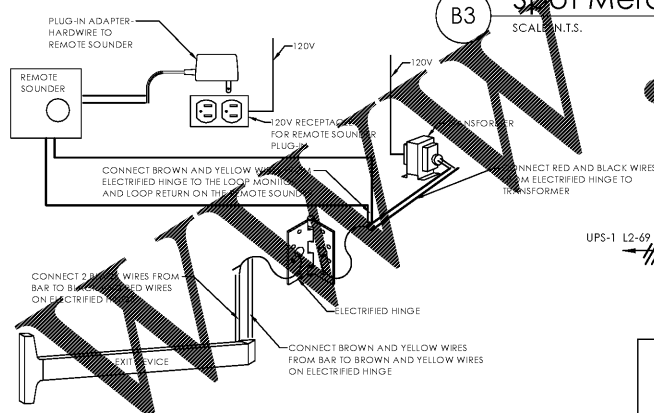
NOTES:
1. ALL LOW VOLTAGE CONDUITS SHALL BE MINIMUM 18 GAUGE AND U.L. RATED FOR USE IN AIR HANDLING PREMISES. WIRING SHALL BE IN CONDUIT WHERE EXPOSED IN BACK ROOM AND SALES AREA.

D1 Bell and Buzzer Wiring Diagram
SCALE: N.T.S.

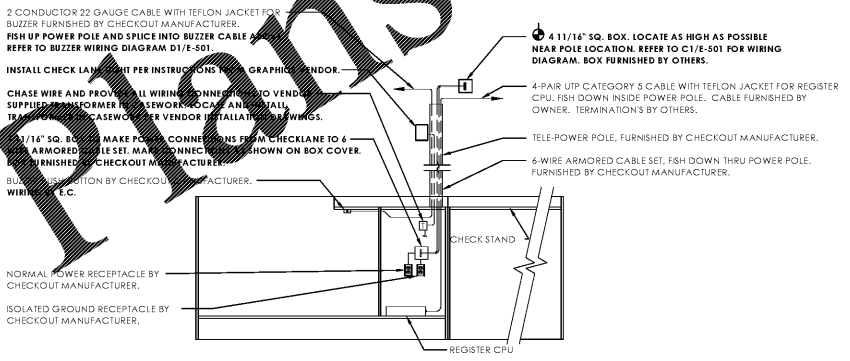


NOTES:
1. REFER TO DETAIL C3/E-501 FOR LOCATION OF SMOKE DETECTORS.
2. REFER TO DETAIL B1/E-401 FOR LOCATION OF REMOTE TEST STATIONS.
3. SMOKE DETECTORS FURNISHED AND INSTALLED BY M.C., ALL WIRING BY E.C..

C2 Duct Smoke Detector Wiring Detail
SCALE:

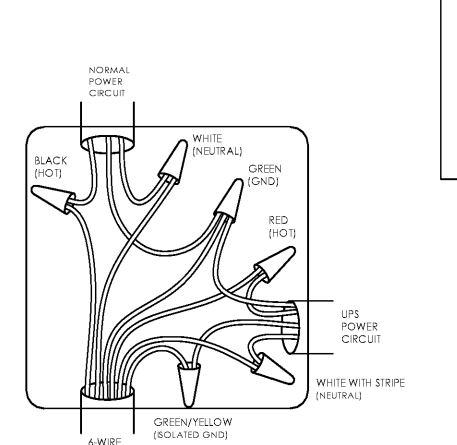


B2 Exit Device/Remote Sounder Detail
SCALE:

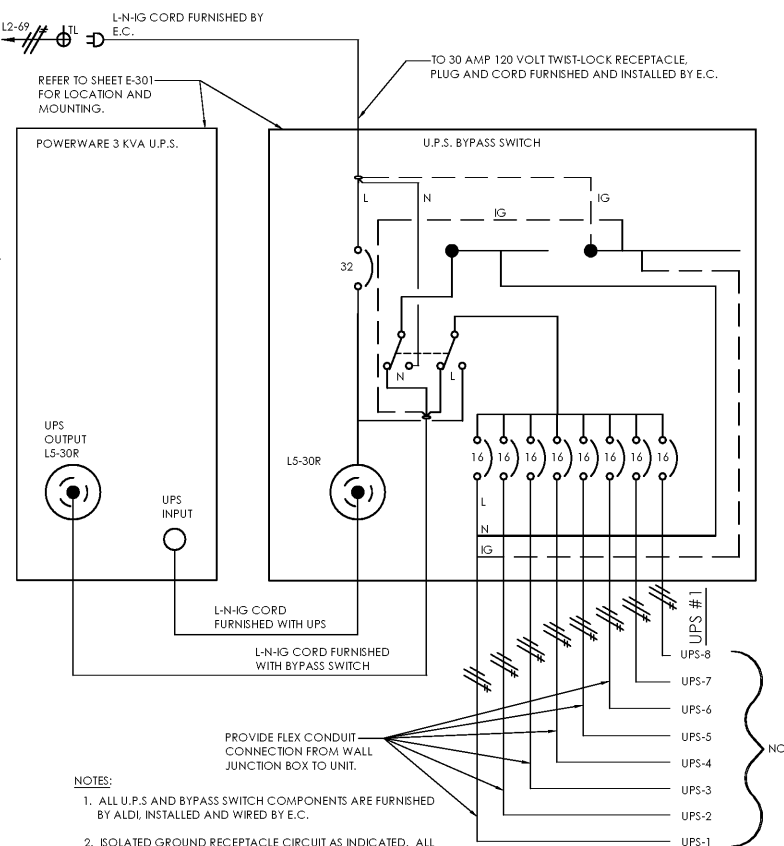


NOTES:
1. BOLD PRINT TEXT IN DETAIL INDICATES WORK BY THE ELECTRICAL CONTRACTOR. LIGHT PRINT TEXT IN DETAIL INDICATES WORK BY OTHERS.
2. ALL CONDUITS TO CHECKOUTS SHALL BE RUN AS HIGH AS POSSIBLE. COMBINE POWER CIRCUITS IN COMMON CONDUIT. PROVIDE DEDICATED 2\"/>

C1 Checkout Wiring Detail
SCALE: N.T.S.



B1 Checkout Wiring Diagram
SCALE: N.T.S.



NOTES:
1. ALL U.P.S. AND BYPASS SWITCH COMPONENTS ARE FURNISHED BY ALDI, INSTALLED AND WIRED BY E.C.
2. ISOLATED GROUND RECEPTACLE CIRCUIT AS INDICATED. ALL WIRING SHALL BE MINIMUM #12 IN CONDUIT. REFER TO SHEET E-201 & E-301 FOR LOCATIONS.
3. ALL UPS POWERED RECEPTACLES SHALL BE LABELED ON DEVICE FACEPLATE \"UPS-#\" WHERE # = CIRCUIT NUMBER.

A1 UPS Wiring Diagram
SCALE: N.T.S.

Issued:	Date:
A Client Review Set	04/07/17
B Permit Set	04/07/17
C Bid Set	09/05/17
D	

Revisions:	Date:
1	
2	
3	
4	
5	
6	
7	
8	
9	

DO NOT SCALE PLANS
Copying, Printing, Software and other processes required to produce these prints on stretch or shrink the actual paper or layout. Therefore, scaling of this drawing may be inaccurate. Contact ms consultants with any need for additional dimensions or clarifications.

ms consultants, inc.
engineers, architects, planners
2221 Schrock Road
Columbus, Ohio 43229-1547
phone 614.898.7100
fax 614.898.7570

DRAWN BY: ZRD
REVIEWED BY: KFF/DED

PROFESSIONAL OF RECORD:
DANIEL E. DOWLER No 0402054658
EXP. DATE: 02/28/2019

ALDI Inc.
1985 Old Union Church Road
Salisbury, NC 28146
(704) 642-0023
(704) 642-0078 fax

ALDI Inc. Store #: 161
VA Beach Blvd & Thalia
4220 Virginia Beach Blvd
Virginia Beach, VA 23452
Willis Wayside
Project Name & Location:

Electrical Details	
Drawing Name:	E-501
Prototype Rls. 02/08/17	Project No. 40320-40
Type: RHSD-V7	
Scale: As Noted	Drawing No.