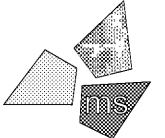


Issued:	Date:
A Client Review Set	04/07/17
B Permit Set	04/07/17
C Bid Set	09/05/17
D	
Revisions:	Date:
1	
2	
3	
4	
5	
6	
7	
8	
9	

**DO NOT SCALE PLANS**  
 Copying, Printing, Software and other processes required to produce these prints on stretch or shrink the actual paper or layout. Therefore, scaling of this drawing may be inaccurate. Contact ms consultants with any need for additional dimensions or clarifications.



**ms consultants, inc.**  
 engineers, architects, planners  
 2221 Schrock Road  
 Columbus, Ohio 43229-1547  
 phone 614.898.7100  
 fax 614.898.7570

DRAWN BY: ZRD  
 REVIEWED BY: KFF/DED

Seal  
 PROFESSIONAL OF RECORD:  
 DANIEL E. DOWLER No 0402054658  
 EXP. DATE: 02/28/2019

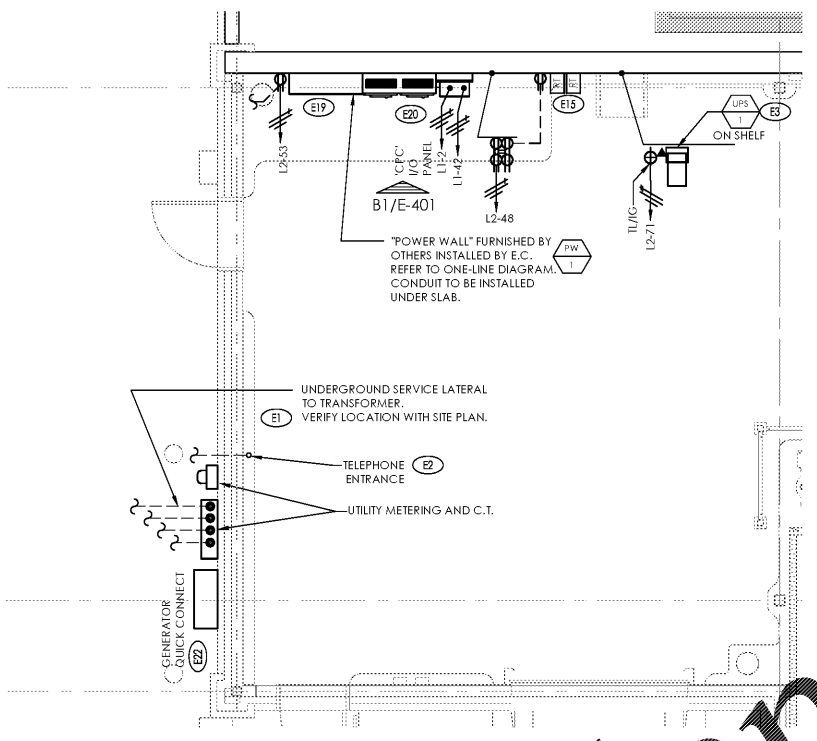


ALDI Inc. Store #: 161  
 VA Beach Blvd & Thalia  
 4220 Virginia Beach Blvd  
 Virginia Beach, VA 23452  
 Willis Wayside  
 Project Name & Location:

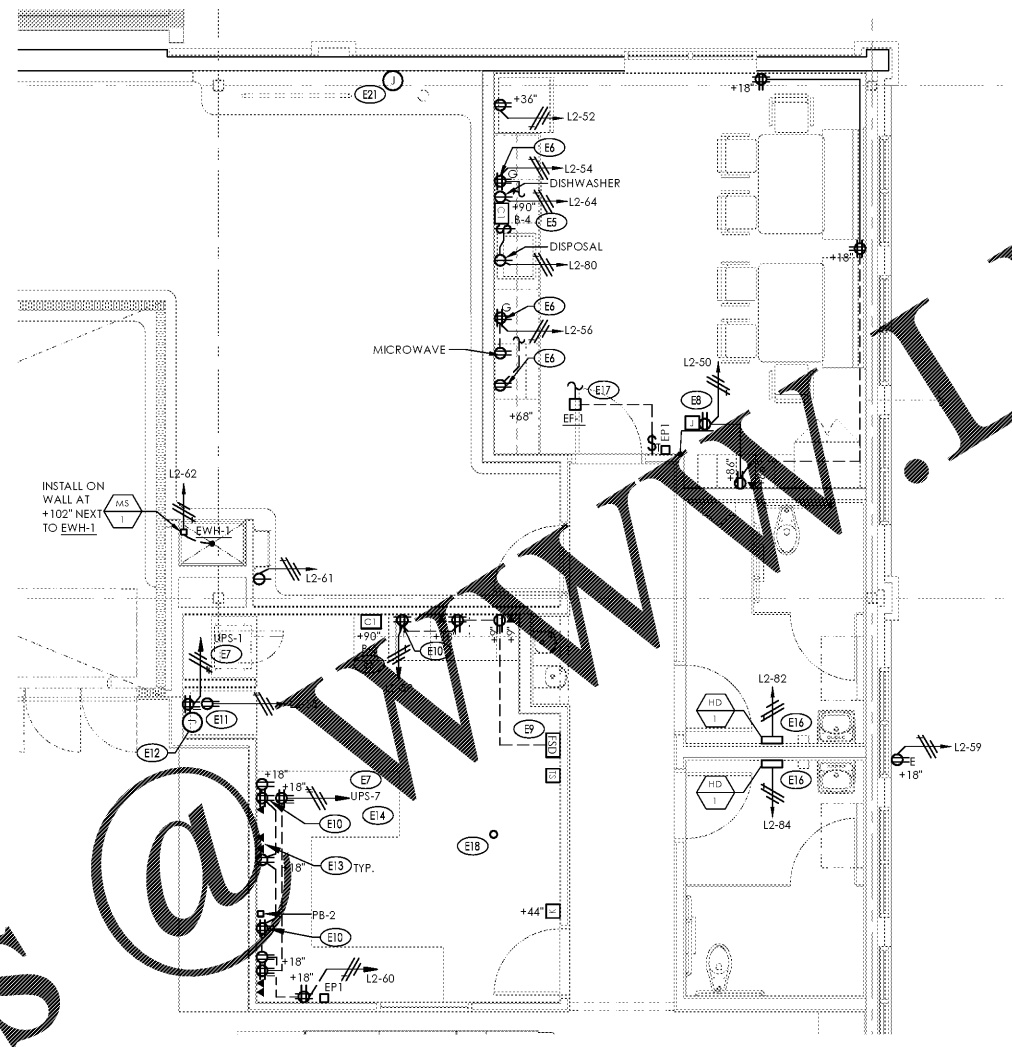
Enlarged Plan Drawing Name:	
Prototype Rls. 02/08/17	Project No. 40320-40
Type: RHSD-V7	
Scale: As Noted	Drawing No. E-301

**ENLARGED PLAN KEYNOTES**

- E1 ELECTRICAL SERVICE ENTRANCE REFER TO ONE-LINE DIAGRAM D1/E-401 FULLY COORDINATE METERING AND CONDUIT REQUIREMENTS WITH UTILITY COMPANY PRIOR TO INSTALLATION.
- E2 E.C. SHALL PROVIDE 3" MINIMUM PVC CONDUIT UNDER GROUND FOR TELEPHONE. EXTEND RGS CONDUIT A MINIMUM OF 10'-0" HORIZON FROM BREAKING. VERIFY LOCATION AND EXACT REQUIREMENTS WITH TELEPHONE COMPANY. EXTEND CONDUIT 6" ABOVE PALLET CURB AND INSTALL INSULATION FLASHING. BOND TO GROUND BAR IN (UPS-1) WITH #6 BARE COPPER GROUND.
- E3 REFER TO A1/E-501 FOR WIRING DIAGRAM FOR (UPS-1) AND SYSTEM BYPASS. (UPS-1) AND SYSTEM BYPASS TO BE MOUNTED ON THE SHELF. SHELF BY G.C. COORDINATE TWIST LOCK RECEPTACLE LOCATION WITH SHELF AND UNIT. VERIFY EXACT LOCATION WITH ALDI REPRESENTATIVE. G.C. SHALL COORDINATE UPS SYSTEM TEST WITH ALDI REPRESENTATIVE AT TIME OF PUNCH.
- E4 PROVIDE TWO RECEPTACLES SPACED 6" ON CENTER AT 9'-0" A.F.F. AND TWO RECEPTACLES SPACED 6" ON CENTER 9'-0" FOR SECURITY SYSTEM POWER PACKS. COORDINATE LOCATION WITH SECURITY SYSTEM INSTALLER PRIOR TO ROUGH-IN.
- E5 CHIMNEY SHALL BE SURFACE MOUNTED IN LOCATION INDICATED PER MANUFACTURERS RECOMMENDATIONS. REFER TO D1/E-501 FOR BELL AND BUZZER WIRING DIAGRAM AND E-001 FOR MATERIALS LIST.
- E6 RECEPTACLES TO BE INSTALLED ABOVE COUNTER IN BREAK ROOM. REFER TO ARCHITECTURAL INTERIOR ELEVATIONS. FIELD VERIFY WITH LOCATION OF COUNTER PRIOR TO ROUGH-IN.
- E7 WIRE THROUGH CIRCUIT BREAKER IN (UPS-1) WITH MINIMUM #12 CONDUCTORS IN CONDUIT. REFER TO A1/E-501 FOR WIRING DIAGRAM. ALL UPS POWERED RECEPTACLES SHALL BE LABELED ON DEVICE FACEPLATE "UPS-4" WHERE # = CIRCUIT NUMBER.
- E8 PROVIDE DUPLEX RECEPTACLE AND SINGLE GANG JUNCTION BOX WITH 3/4" CONDUIT TO ABOVE CEILING FOR TIME CLOCK. RECEPTACLE AND JUNCTION BOX SHALL BE MOUNTED IN FLAT PANEL CONNECTION ENCLOSURE HUBBELL #NSAV62M WITH #NSAV6C COVER. REFER TO ARCHITECTURAL INTERIOR ELEVATIONS FOR LOCATION.
- E9 FACILITY STATUS DISPLAY. PROVIDE 3/4" CONDUIT TO ABOVE CEILING FOR COMM. WIRING.
- E10 RECEPTACLES TO BE INSTALLED ABOVE COUNTER IN OFFICE. REFER TO ARCHITECTURAL INTERIOR ELEVATIONS. FIELD VERIFY WITH LOCATION OF COUNTER PRIOR TO ROUGH-IN.
- E11 JUNCTION BOX AND RECEPTACLE LOCATION IN IT RACK ALCOVE SHALL LOCATED SO THAT THEY ARE NOT OBSTRUCTED BY RACK FRAMING AND BRACING. REFER TO ARCHITECTURAL INTERIOR ELEVATIONS FOR COORDINATION. COMPUTER/SCANNER CABLES AND INSTALLATION SHALL BE BY OTHERS.
- E12 PROVIDE 10"X10"X4" RECESSED BOX WITH (3) THREE 2" CONDUITS TO ABOVE CEILING. REFER TO ARCHITECTURAL INTERIOR ELEVATIONS FOR BOX AND RECEPTACLE LOCATIONS.
- E13 PROVIDE SINGLE GANG BOX AND 3/4" CONDUIT TO ABOVE CEILING FOR CABLING. REFER TO ARCHITECTURAL INTERIOR ELEVATIONS.
- E14 REFER TO ARCHITECTURAL INTERIOR ELEVATIONS FOR COORDINATION OF COMPUTER OUTLET AND RECEPTACLE LOCATIONS. COMPUTER/SCANNER CABLES AND INSTALLATION SHALL BE BY OTHERS.
- E15 DUCT SMOKE REMOTE TEST STATIONS SHALL BE LOCATED ADJACENT TO FIRE ALARM PANEL. COORDINATE LOCATIONS WITH FIRE ALARM SYSTEM INSTALLER PRIOR TO ROUGH-IN.
- E16 INSTALL (HD/1) HAND DRYER IN RESTROOM. REFER TO ARCHITECTURAL INTERIOR ELEVATION FOR LOCATION AND MOUNTING HEIGHT.
- E17 SWITCH EF-1 IN BREAK ROOM WITH A DIGITAL TIMER SWITCH SWITCH SET TO 30 MIN TIME DELAY. PROVIDE POWER TO EF-1 FROM LIGHTING CIRCUIT.
- E18 PROVIDE 2" RIGID GALVANIZED STEEL CONDUIT FROM 2' BELOW ROOF DECK UP THROUGH ROOF. PROVIDE WEATHER HEAD AT CONDUIT END MOUNTED A MINIMUM OF 1' ABOVE ROOF LINE. FIELD VERIFY EXACT LOCATION OF PENETRATION PRIOR TO INSTALLATION. E.C. SHALL COORDINATE FLASHING REQUIREMENTS WITH ROOFING MANUFACTURER.
- E19 REFER TO EMS DRAWINGS FOR ADDITIONAL INFORMATION ON EMS DEVICES MOUNTED IN POWERWALL.
- E20 ELECTRICAL CONTRACTOR SHALL PROVIDE 17" DIAMETER ELECTRICAL CLEARANCE WARNING LABEL AS DISTRIBUTED BY EMECO; SKU: JFD1845. COORDINATE INSTALLATION LOCATION WITH ARCHITECTURAL DRAWINGS AND G.C.
- E21 PROVIDE 4" SQ BOX AT SPRINKLER RISER WITH 3/4" CONDUIT TO ROOF DECK FOR TAMPER SWITCH. COORDINATE LOCATION AND REQUIREMENTS WITH ALARM INSTALLER PRIOR TO ROUGH-IN.
- E22 FULLY COORDINATE GENERATOR CONNECTION REQUIREMENTS AND RECEIVE APPROVAL FROM UTILITY COMPANY AND ALDI REP. VERIFY FINAL LOCATION OF GENERATOR CONNECTION BOX WITH ALDI REP PRIOR TO INSTALLATION. REFER TO ONE-LINE DIAGRAM D1/E-401.



D1 Enlarged Plan  
Utility Area  
SCALE: 1/4" = 1'-0"



B1 Enlarged Plan  
Office, Break Room  
SCALE: 1/4" = 1'-0"

Order Plans