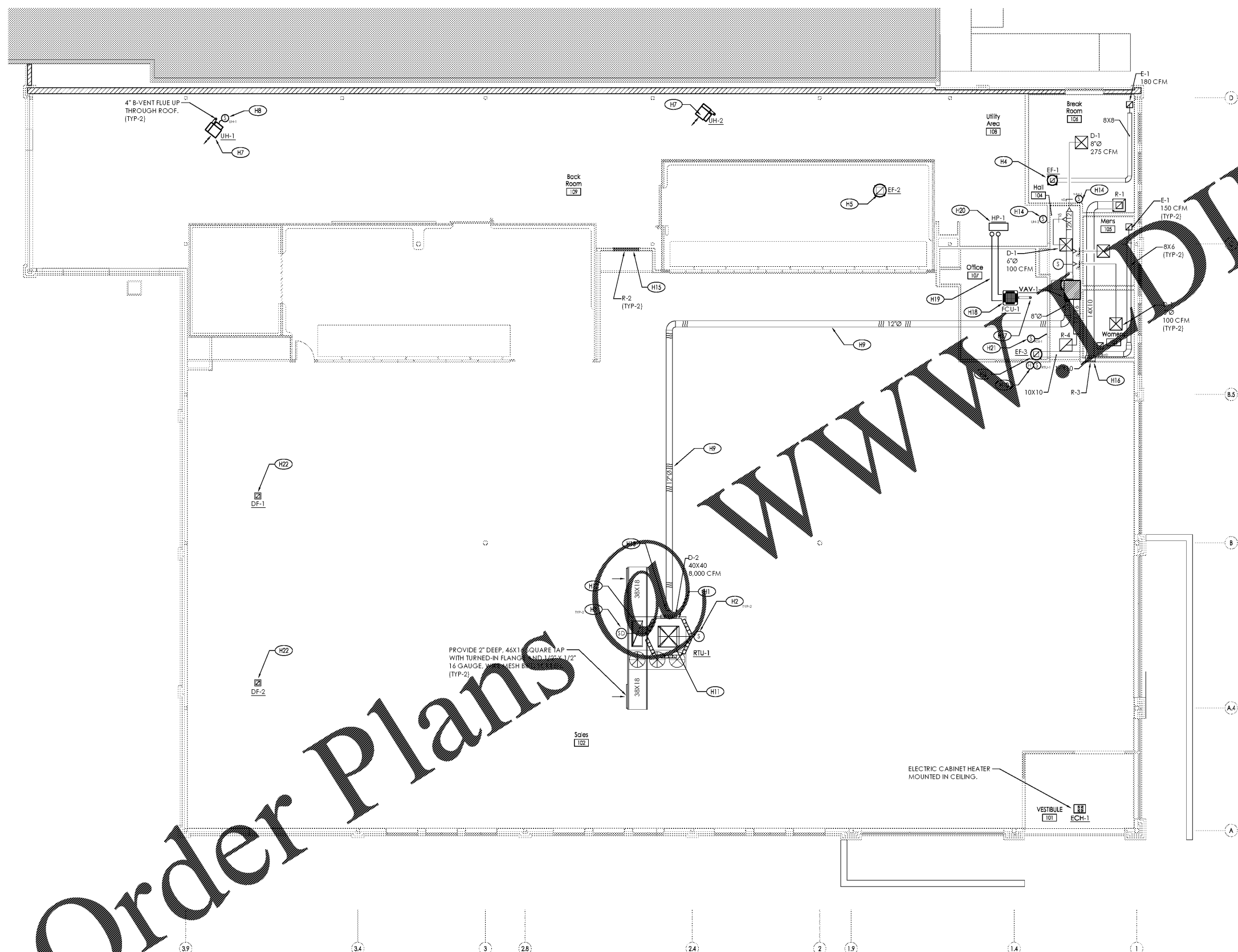


PLOTTED: 9/1/2017 1:32 PM



GENERAL HVAC NOTES:

- 1. COORDINATE DIFFUSER LOCATIONS WITH REFLECTED CEILING PLAN INCLUDING LIGHTS AND SPRINKLER HEAD LAYOUTS.
2. PROVIDE DUCT MOUNTED SMOKE DETECTORS IN SUPPLY AIR DUCTS AS INDICATED ON THE FLOOR PLAN.
3. COORDINATE 6-WAY SUPPLY DIFFUSER MOUNTING HEIGHT AND LOCATION WITH STRUCTURAL STEEL AND LIGHTS.
4. TEMPERATURE AND HUMIDITY SENSORS ARE SHOWN FOR REFERENCE ONLY.
5. ALL DUCT DIMENSIONS REPRESENT FREE AREA.
6. ALL TURNED ELBOWS SHALL BE PROVIDED WITH TURNING VANES.
7. ALL ROUND DUCTWORK SHALL BE SPIRAL.
8. PROVIDE VOLUME DIFFUSERS AT ALL RETURN REGISTER TAKEOFFS.
9. MAXIMUM DUCT LENGTH SHALL BE 4FT.
10. FIELD VERIFY ALL NEW EQUIPMENT AND SCOPE OF WORK PRIOR TO BIDDING.
11. INSULATE ALL DUCTWORK CONCEALED ABOVE A CEILING AND EXPOSED IN THE BACK ROOM.

HVAC PLAN KEYNOTES:

- (H1) MOUNT 6-WAY SUPPLY DIFFUSER TIGHT TO BOTTOM OF ROOF JOIST. SUPPORT FROM ROOF STRUCTURE WITH THREADED ROD. ADJUST THE THROW FOR EACH LOUVER TO BE 15° DOWNWARD FROM THE HORIZONTAL POSITION.
(H2) DISCHARGE AIR TEMPERATURE SENSOR. SENSORS, WIRING AND CONDUIT SHALL BE PROVIDED AND INSTALLED BY OTHERS.
(H3) DUCT MOUNTED SMOKE DETECTOR.
(H4) 8X8 EXHAUST UP TO EF-1 LOCATED ON ROOF.
(H5) 14X14 EXHAUST UP TO EF-2 LOCATED ON ROOF AND EXTENDED 1'-8" INTO SPACE. PROVIDE 18X18 WELDED DRAIN PAN BELOW DUCT OPENING.
(H6) 10X10 EXHAUST UP TO EF-3 LOCATED ON ROOF.
(H7) MOUNT BOTTOM OF UNIT HEATER AT A MINIMUM OF 10'-6" AFF.
(H8) PENDENT MOUNT TEMPERATURE SENSOR/DIGITAL ZONE CONTROLLER AT REAR OF UNIT HEATER AT 10'-6" AFF.
(H9) RUN 12" DUCT BETWEEN AND THROUGH ROOF JOISTS AND JOIST GIRDER. PROVIDE OFFSETS AS REQUIRED AND MOUNT AS TIGHT TO THE ROOF DECK AS POSSIBLE.
(H10) TEMPERATURE & HUMIDITY SENSORS MOUNTED ON WALL AT 5'-2" AFF TO THE BOTTOM OF EACH SENSOR. SENSORS, WIRING AND CONDUIT SHALL BE PROVIDED AND INSTALLED BY OTHERS.
(H11) 40X40 LINED SUPPLY UP TO RTU-1. TRANSITION TO RTU SUPPLY CONNECTION.
(H12) 50X20 LINED RETURN UP TO RTU-1. TRANSITION TO RTU RETURN CONNECTION.
(H13) CONNECT 12" DUCT SUPPLY TO 40X40 SUPPLY AIR RISER.
(H14) MOUNT TEMPERATURE SENSOR/DIGITAL ZONE CONTROLLER ON WALL AT 5'-0" AFF.
(H15) 48X12 TRANSFER MOUNTED AT 8'-10" AFF.
(H16) 18X10 TRANSFER MOUNTED AT 10'-6" AFF.
(H17) 4" DUCT OUTSIDE AIR DUCT UP THROUGH ROOF. TERMINATE 1'-6" ABOVE ROOF WITH GOOSENECK. PROVIDE BACKDRAFT DAMPER IN RISER.
(H18) CEILING MOUNTED CASSETTE DUCTLESS SPLIT FAN COIL UNIT. SUSPEND FROM ROOF STRUCTURE WITH THREADED ROD.
(H19) 3/8"RS & 1/4"RL INSULATED REFRIGERANT LINE KIT. REFRIGERANT PIPING SHALL BE SIZED PER MANUFACTURER'S RECOMMENDATIONS.
(H20) SUSPEND AIR COOLED HEAT PUMP BETWEEN ROOF JOISTS WITH THREADED ROD AND UNISTRUT.
(H21) TEMPERATURE SENSOR/DIGITAL ZONE CONTROLLER MOUNTED ON WALL AT 5'-0".
(H22) DESTRATIFICATION FAN SUPPORTED FROM BUILDING STRUCTURE. MOUNT 1'-0" BELOW ROOF DECK. MAKE/MODEL: AIR-ROW F-18.

Order Plans

1 HVAC Construction Plan SCALE: 1/8" = 1'-0"



Table with columns: Issued, Date, Revisions, Date. Contains revision history for Client Review Set, Permit Set, Bid Set.

DO NOT SCALE PLANS. Copying, printing, software and other processes required to produce these prints can stretch or shrink the actual paper or layout. Therefore, scaling of this drawing may be inaccurate. Contact us consultants with any need for additional dimensions or clarifications.

ms consultants, inc. engineers, architects, planners. 2221 Schrock Road Columbus, Ohio 43229-1547 phone 614.898.7100 fax 614.898.7570

DRAWN BY: ZRD REVIEWED BY: KFF/DED

Seal area with a large blank space for a professional seal.

PROFESSIONAL OF RECORD: DANIEL E. DOWLER No 0402054658 EXP. DATE: 02/28/2019

ALDI Inc. logo and address: 1985 Old Union Church Road Salisbury, NC 28146

ALDI Inc. Store #: 161 VA Beach Blvd & Thalia 4220 Virginia Beach Blvd Virginia Beach, VA 23452 Willis Wayside Project Name & Location:

Table with columns: HVAC Construction Plan, Drawing Name, Prototype Rls. (02/08/17), Project No. (40320-40), Type: RHSD-V7, H-101, Scale: As Noted, Drawing No.