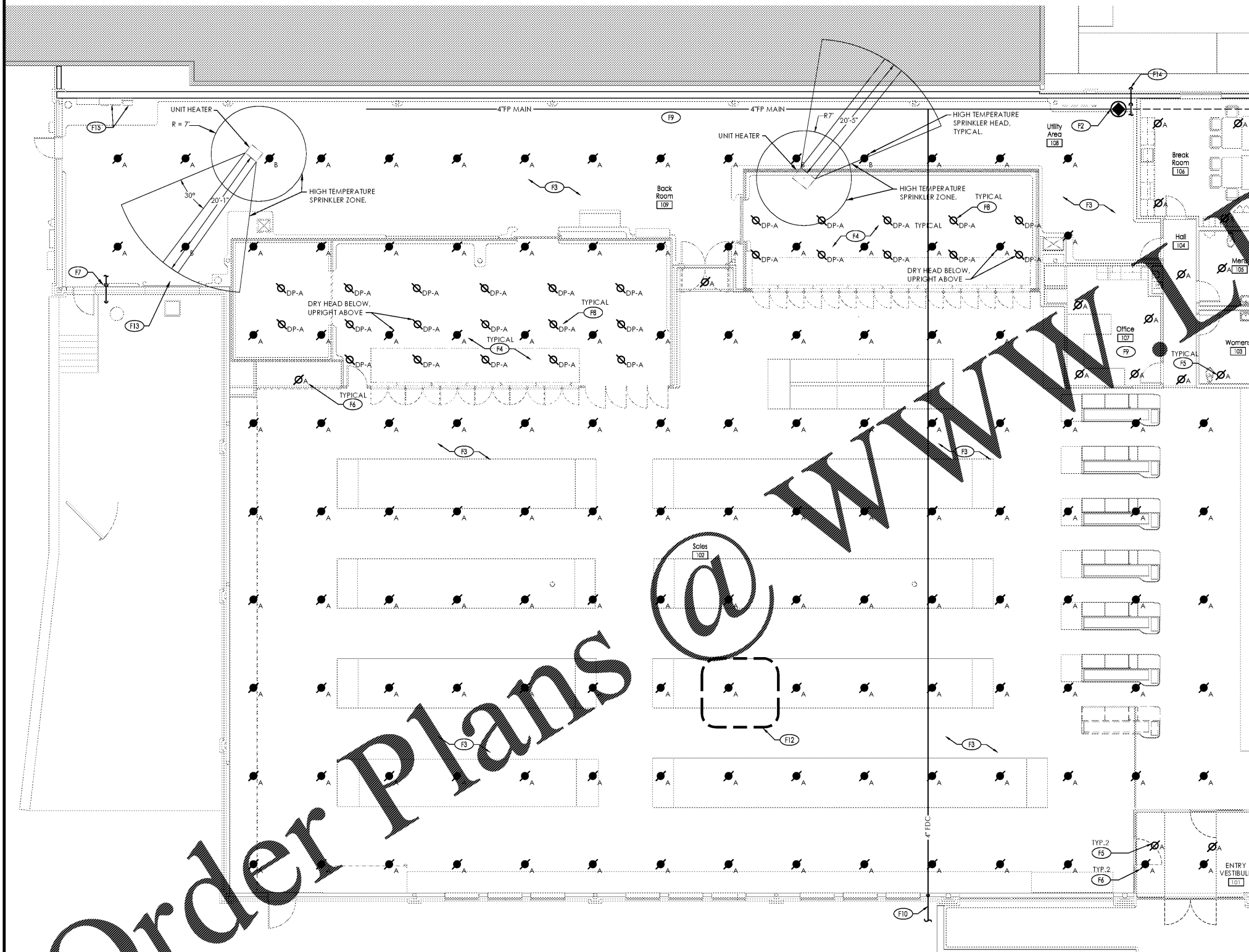


SPRINKLER HEAD SCHEDULE						
SYMBOL	DESCRIPTION	ORIFICE SIZE	"K" VALUE	TEMP. ° F.	FINISH	NOTES
∅ _A	PENDANT - TYCO TY-FRB (TY3231), OR APPROVED EQUAL	1/2"	5.60	155	WHITE	1,2,3
∅ _B	UPRIGHT - TYCO TY-FRB (TY3131), OR APPROVED EQUAL	1/2"	5.60	155	CHROME	1
∅ _B	UPRIGHT - TYCO TY-FRB (TY3131), OR APPROVED EQUAL	1/2"	5.60	200	CHROME	1
∅ _{DP-A}	PENDANT DRY HEAD- DS-1 (TY3255), OR EQUAL	1/2"	5.60	155	CHROME	1,4

NOTES:
 1. STANDARD RESPONSE
 2. PROVIDE RECESSED ESCUTCHEON (FINISH: WHITE)
 3. PROVIDE 1" STAINLESS STEEL CORRUGATED FLEXIBLE TUBING TO PENDANT SPRINKLER HEAD ABOVE CEILING.
 4. PROVIDE SPRINKLER HEAD GUARD.



GENERAL FIRE PROTECTION NOTE:

ALL WATER PIPING SHALL BE ROUTED AWAY FROM ELECTRICAL EQUIPMENT WHENEVER POSSIBLE. REFER TO FP-201 GENERAL NOTES FOR ROUTING INFORMATION.

FIRE PROTECTION PLAN KEYNOTES:

- (F1) PROVIDE 4" UNDERGROUND FIRE PROTECTION WATER SERVICE. CONNECT TO SITE PIPING. REFER TO SITE UTILITY PLANS AND COORDINATE WITH SITE CONTRACTOR.
- (F2) PROVIDE FIRE PROTECTION RISER AT 6" FP WATER SERVICE ENTRANCE. REFER TO DETAILS A1/FP-201 & C1/FP-201.
- (F3) PROVIDE SPRINKLER SUPPLY PIPING AS REQUIRED TO SERVE ENTIRE BUILDING. PROVIDE 100% SPRINKLER COVERAGE THROUGHOUT BUILDING. HYDRAULICALLY SIZE ALL PIPING.
- (F4) PROVIDE DRY-PIPE HEADS (FOR WET-PIPE SYSTEMS) WITH HEAD GUARDS AND LOCATE WITHIN COOLER AND FREEZER UNITS PER NFPA-13. PROVIDE UPRIGHT WET-PIPE HEADS ABOVE UNITS.
- (F5) PROVIDE PENDENT HEAD(S) IN CEILING AND/OR SOFFIT.
- (F6) PROVIDE UPRIGHT HEAD(S) ABOVE LAY-IN CEILING BELOW.
- (F7) PROVIDE INSPECTOR'S TEST. TERMINATE THRU WALL WITH 45° ELBOW TURNED DN. REFER TO DETAIL D1/FP-201.
- (F8) PRIOR TO SPRINKLER ROUGH-IN, COORDINATE LOCATION OF DRY PIPE HEADS WITH REFRIGERATION CONTRACTOR. ANY DRY PIPE HEAD THAT FALLS WITHIN 48" OF EVAPORATOR SHALL BE A HIGH TEMPERATURE HEAD.
- (F9) ROUTE MAIN WITHIN BACK ROOM, TIGHT TO BOTTOM OF STEEL. ROUTE ALL BRANCH LINES NO LOWER THAN THE TOP OF THE BOTTOM CHORD OF JOISTS. ANY LINE, BRANCH OR MAIN; RUN ON THE SALES FLOOR SHALL BE NO LOWER THAN THE TOP OF THE BOTTOM CHORD OR JOIST. COORDINATE WITH HVAC AND ELECTRICAL CONTRACTOR TO MINIMIZE DEVIATIONS FROM THESE MINIMUMS.
- (F10) PROVIDE 4" LINE TO REMOTE FDC. REFER TO CIVIL DRAWINGS FOR LOCATION.
- (F11) NOT USED.
- (F12) COORDINATE LOCATION OF SPRINKLER HEADS WITH RTU DUCT DROPS AND ASSOCIATED DUCT WORK AS REQUIRED TO MAINTAIN CODE REQUIRED FIRE PROTECTION COVERAGE.
- (F13) IF UPRIGHT HEAD(S) ARE OBSTRUCTED BY OVERHEAD DOOR WHEN DOOR IS OPEN, PROVIDE ADDITIONAL HEAD(S) BELOW DOOR TO PROVIDE PROPER COVERAGE. LOCATION MUST BE IN ACCORDANCE WITH LOCAL OR GOVERNING CODE.
- (F14) PROVIDE 2" DRAIN OFF MAIN. REFER TO C1/FP-201 FOR DETAIL.
- (F15) DO NOT ROUTE ANY FIRE PROTECTION PIPING OVER ELECTRICAL GEAR. COORDINATE NEARBY WORK WITH G.C..

Building Sprinkler Information

OWNER: ALDI, Inc.
 1985 Old Union Church Road
 Salisbury, NC 28146

LOCATION: Aldi - Inc.
 VA Beach Blvd. & Thalia
 Virginia Beach, VA 23452

OCCUPANCY: Mercantile

HAZARD CLASSIFICATION: Store - Ordinary Hazard Group 2

Sprinkler System Information

SPRINKLER SYSTEM TYPE: Wet-Pipe

MAX AREA/ SPRINKLER: 130 SQ.FT.

FLOW DENSITY: 0.2 GPM/SQ.FT.

AREA OF COVERAGE: 1,500 SQ.FT.

INSIDE HOSE DEMAND: N/A

OUTSIDE HOSE DEMAND: 250 GPM

Water Supply Information:

FIRE PROTECTION CONTRACTOR IS RESPONSIBLE FOR OBTAINING HYDRANT FLOW TEST DATA FOR HYDRAULIC CALCULATIONS

Issued:	Date:
A Client Review Set	04/07/17
B Permit Set	04/07/17
C Bid Set	09/05/17
D	
Revisions:	Date:
1	
2	
3	
4	
5	
6	
7	
8	
9	

DO NOT SCALE PLANS

Copying, Printing, Software and other processes required to produce these prints on stretch or shrink the actual paper or layout. Therefore, scaling of this drawing may be inaccurate. Contact ms consultants with any need for additional dimensions or clarifications.

ms consultants, inc.
 engineers, architects, planners
 2221 Schrock Road
 Columbus, Ohio 43229-1547
 phone 614.898.7100
 fax 614.898.7570

DRAWN BY: ZRD

REVIEWED BY: KFF/DED

Seal

PROFESSIONAL OF RECORD:
 DANIEL E. DOWLER No 0402054658
 EXP. DATE: 02/28/2019

ALDI Inc.
 1985 Old Union Church Road
 Salisbury, NC 28146
 (704) 642-0023
 (704) 642-0078 fax

ALDI Inc. Store #: 161
 VA Beach Blvd & Thalia
 4220 Virginia Beach Blvd
 Virginia Beach, VA 23452
 Willis Wayside
 Project Name & Location:

Fire Protection Floor Plan	
Drawing Name:	
Prototype Rls. 02/08/17	Project No. 40320-40
Type: RHSD-V7	
	FP-101
Scale: As Noted	Drawing No.

PLOTTED: 9/1/2017 1:32 PM

Order Plans

D1 Fire Protection Floor Plan
 SCALE: 1/8" = 1'-0"

