

NOTE:

ALL ELEVATIONS ARE TAKEN FROM FINISHED FLOOR: 0'-0" 0'-0" = 12.33'

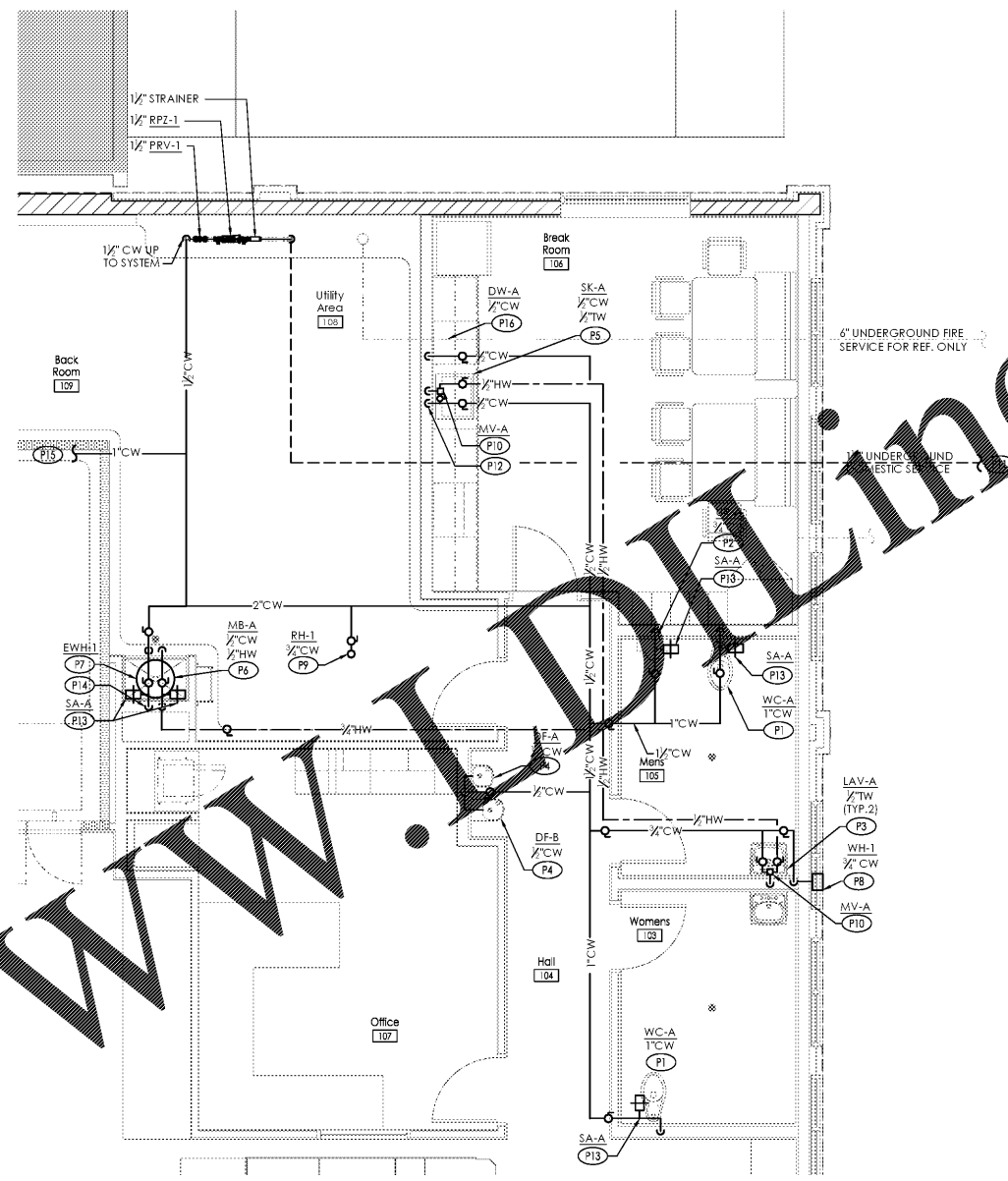
ENLARGED PLUMBING PLAN KEYNOTES (D1):

- (P1) PROVIDE WATER CLOSET AND PIPING CONNECTIONS.
- (P2) PROVIDE URINAL AND PIPING CONNECTIONS.
- (P3) PROVIDE LAVATORY AND PIPING CONNECTIONS.
- (P4) PROVIDE DRINKING FOUNTAIN AND PIPING CONNECTIONS.
- (P5) PROVIDE SINK AND PIPING CONNECTIONS.
- (P6) PROVIDE MOP BASIN AND PIPING CONNECTIONS.
- (P7) PROVIDE SANITARY PIPING BELOW FLOOR.
- (P8) PROVIDE FLOOR DRAIN WITH TRAP GUARD INSERT.
- (P9) 1/2" V UP, REFER TO SANITARY ISOMETRIC DIAGRAM D1/P-301 FOR CONTINUATION.
- (P10) 2" V UP, REFER TO SANITARY ISOMETRIC DIAGRAM D1/P-301 FOR CONTINUATION.
- (P11) ROUTE 4" RPZ DISCHARGE TO EXTERIOR, REFER TO WATER SERVICE DETAIL A1 ON P-401.
- (P12) PROVIDE CLEANOUT.
- (P13) NOT USED.
- (P14) PROVIDE CONDENSATE DRAIN FROM P101, ROUTE TO MOP BASIN AS SHOWN, SLOPE AT 1/8" PER FOOT, TERMINATE DRAIN 4" ABOVE BASKET WITH AIR GAP PER CODE.
- (P15) PROVIDE DISHWASHER AND PIPING CONNECTIONS, ROUTE DRAIN TO GARBAGE DISPOSAL OR SINK TAIL PIECE, MAINTAIN AIR GAP.

SANITARY NOTES:

BEFORE BIDDING, S.C. SHALL VERIFY SANITARY SEWER SYSTEM LOCATION, ROUTING, PITCHES, INVERTS, SIZES AND TIE-IN POINTS. ALL SEWER SYSTEM INFORMATION SHALL BE COORDINATED WITH ALDI, INC. REPRESENTATIVE AT THE TIME OF BID WALK-THROUGH. INFORM PLUMBING ENGINEER OF ANY AND ALL DISCREPANCIES FROM WORK SHOWN ON PLUMBING DRAWINGS PRIOR TO BID DATE.

D1 Sanitary Enlarged Plan
SCALE: 1/4" = 1'-0"



ENLARGED PLUMBING PLAN KEYNOTES (B1):

- (P1) PROVIDE WATER CLOSET AND PIPING CONNECTIONS.
- (P2) PROVIDE URINAL AND PIPING CONNECTIONS.
- (P3) PROVIDE LAVATORY AND PIPING CONNECTIONS.
- (P4) PROVIDE DRINKING FOUNTAIN AND PIPING CONNECTIONS.
- (P5) PROVIDE SINK AND PIPING CONNECTIONS.
- (P6) PROVIDE MOP BASIN AND PIPING CONNECTIONS.
- (P7) PROVIDE ELECTRIC WATER HEATER, REFER TO ARCHITECTURAL DRAWINGS FOR WATER HEATER SHELF.
- (P8) PROVIDE 1/2" ANTI-FREEZE LOCKABLE BOX WALL HYDRANT, MOUNT 18" ABOVE FINISHED GRADE.
- (P9) PROVIDE ROOF HYDRANT AT A MINIMUM OF DISTANCE OF 4'-0" FROM ROOF HATCH OPENING.
- (P10) PROVIDE TEMPERING MIXING VALVE, MOUNT ABOVE CEILING IN ACCESSIBLE LOCATION.
- (P11) REFER TO SITE UTILITY DRAWINGS FOR CONTINUATION OF PIPING, P.C. SHALL MAKE FINAL CONNECTIONS TO SITE PIPING, COORDINATE WITH S.C. FOR CONNECTIONS.
- (P12) PROVIDE 1/2" TW & 1/2" CW DN, IN WALL TO SINK.
- (P13) PROVIDE WATER HAMMER SHOCK ABSORBER ABOVE UNIT SERVED, LOCATION SHOWN FOR CLARITY PURPOSES ONLY.
- (P14) PROVIDE 1/2" CW & 1/2" HW DN, IN WALL TO MOP BASIN.
- (P15) 1/2" LINE TO ROOFTOP WATER COOLED CONDENSER, REFER TO P101 FOR MORE INFORMATION.
- (P16) PROVIDE DISHWASHER AND PIPING CONNECTIONS.

GENERAL DOMESTIC WATER NOTES:

1. REFER TO DETAIL A1/P-401 AND ISOMETRIC DIAGRAM B1/P-301.
2. PROVIDE DOMESTIC CW & HW PIPING, PIPING SHALL BE COPPER OR CPVC WATER SUPPLY PIPING, CPVC PIPING SHALL BE APPROVED FOR POTABLE WATER SYSTEMS.
3. ROUTE CW & HW SUPPLY PIPING ABOVE CEILING.
4. ALL WATER PIPING SHALL BE ROUTED AWAY FROM ELECTRICAL EQUIPMENT WHENEVER POSSIBLE, REFER TO P-501 GENERAL NOTES FOR ROUTING INFORMATION.

B1 Domestic Water Enlarged Plan
SCALE: 1/4" = 1'-0"

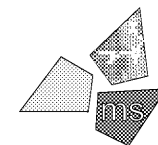


Issued:	Date:
A Client Review Set	04/07/17
B Permit Set	04/07/17
C Bid Set	09/05/17
D	

Revisions:	Date:
1	
2	
3	
4	
5	
6	
7	
8	
9	

DO NOT SCALE PLANS

Copying, Printing, Software and other processes required to produce these prints from stretch or shrink the actual paper or layout. Therefore, scaling of this drawing may be inaccurate. Contact ms consultants with any need for additional dimensions or clarifications.



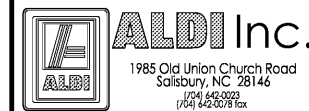
ms consultants, inc.
engineers, architects, planners
2221 Schrock Road
Columbus, Ohio 43229-1547
phone 614.898.7100
fax 614.898.7570

DRAWN BY: ZRD

REVIEWED BY: KFF/DED

Seal

PROFESSIONAL OF RECORD:
DANIEL E. DOWLER No. 0402054658
EXP. DATE: 02/28/2019



ALDI Inc. Store #: 161
VA Beach Blvd & Thalia
4220 Virginia Beach Blvd
Virginia Beach, VA 23452
Willis Wayside
Project Name & Location:

Enlarged Plumbing Plans
Drawing Name:

Prototype Rls. 02/08/17	Project No. 40320-40
Type: RHSD-V7	P-201
Scale: As Noted	Drawing No.