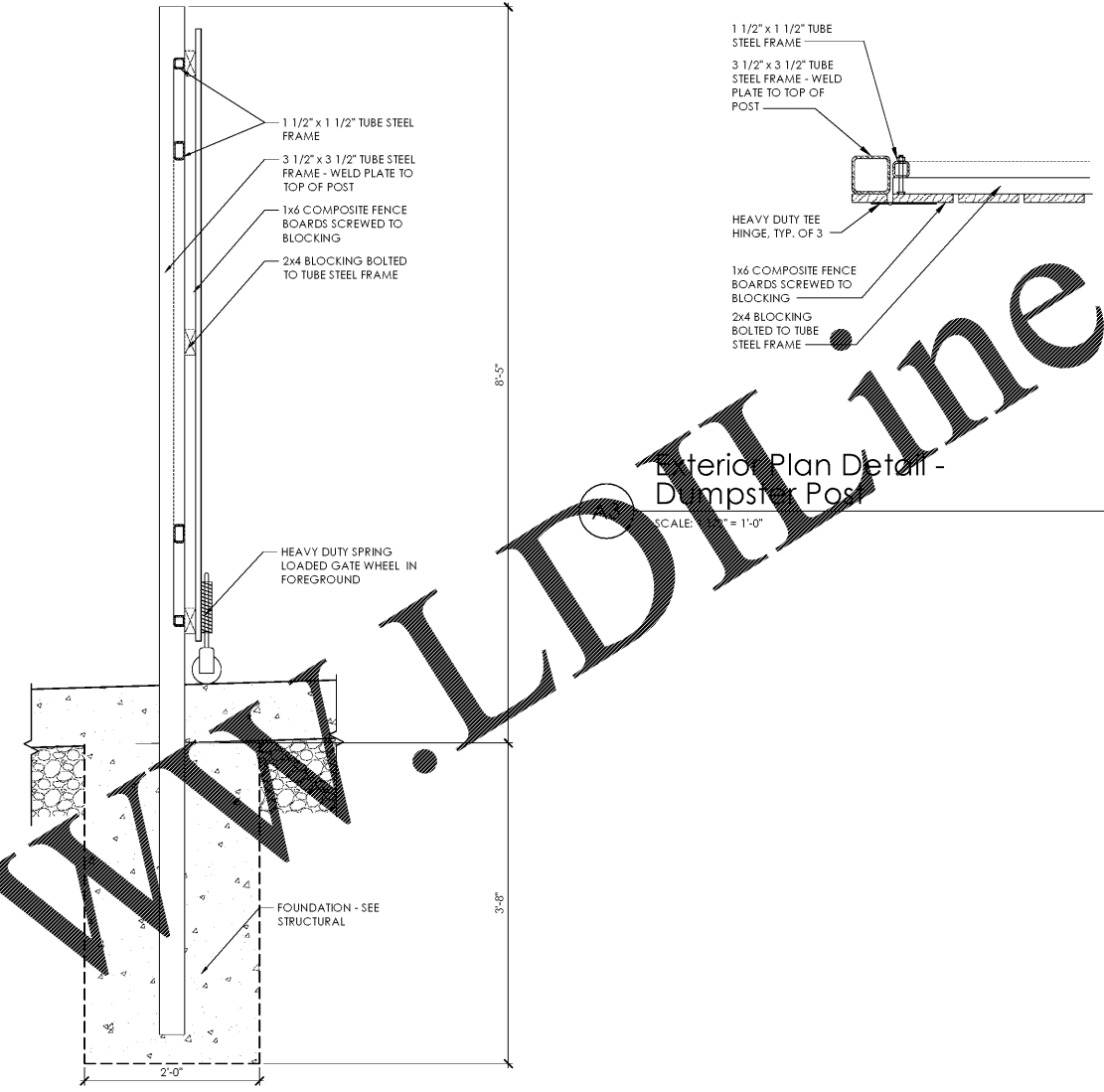


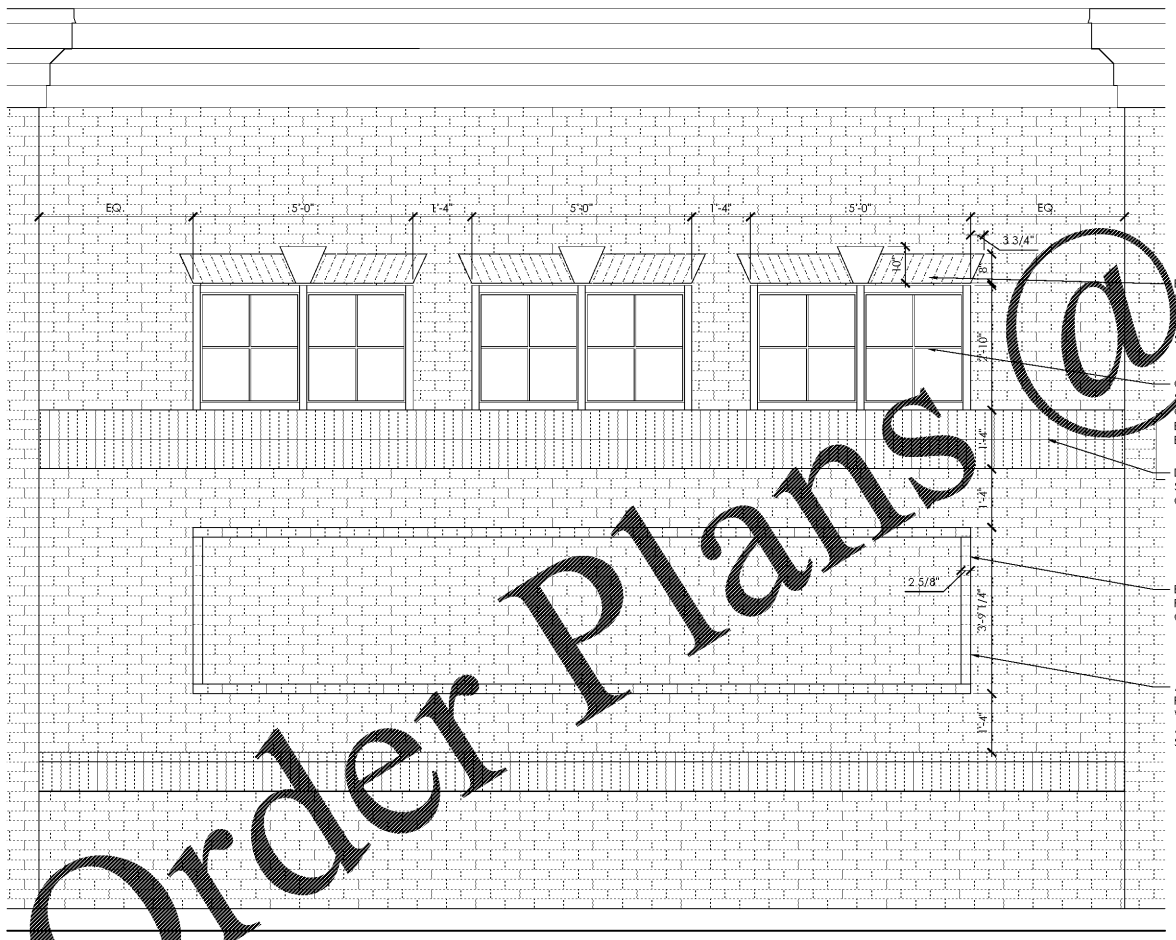
**Exterior Plan Detail - Clerestory Window**

D2 SCALE: 1 1/2" = 1'-0"



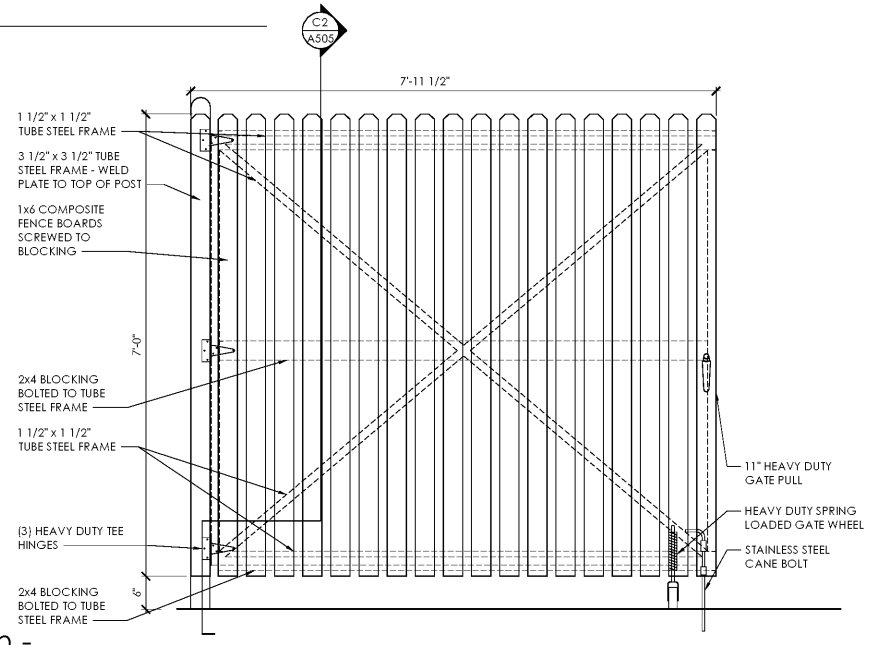
**Exterior Section Detail - Dumpster Post**

C2 SCALE: 1" = 1'-0"



**Typical Partial Exterior Elevation**

D1 SCALE: 1/2" = 1'-0"



**Exterior Elevation - Dumpster Gate**

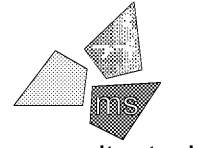
B1 SCALE: 3/4" = 1'-0"

Issued:		Date:
A	Client Review Set	04/07/17
B	Permit Set	04/07/17
C	Bid Set	09/05/17
D		

Revisions:		Date:
1		
2		
3		
4		
5		
6		
7		
8		
9		

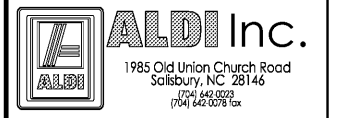
**DO NOT SCALE PLANS**  
 Copying, Printing, Software and other processes required to produce these prints can stretch or shrink the actual paper or layout. Therefore, scaling of this drawing may be inaccurate. Contact ms consultants with any need for additional dimensions or clarifications.



**ms consultants, inc.**  
 engineers, architects, planners  
 2221 Schrock Road  
 Columbus, Ohio 43229-1547  
 phone 614.898.7100  
 fax 614.898.7570

DRAWN BY: MYG  
 REVIEWED BY: MJB/CLR

Seal  
 PROFESSIONAL OF RECORD:  
 ERIC ELIZONDO No. 0401016074  
 EXP. DATE: 06/30/2018



**ALDI Inc.** Store #: 161  
 VA Beach Blvd & Thalia  
 4220 Virginia Beach Blvd  
 Virginia Beach, VA 23452  
 Willis Wayside  
 Project Name & Location:

Exterior Details Drawing Name:	
Prototype Rls. 02/08/17	Project No. 40320-40
Type: RHSD-V7	
	A-505
Scale: As Noted	Drawing No.

Order Plans @

WWW.LDOnline.com