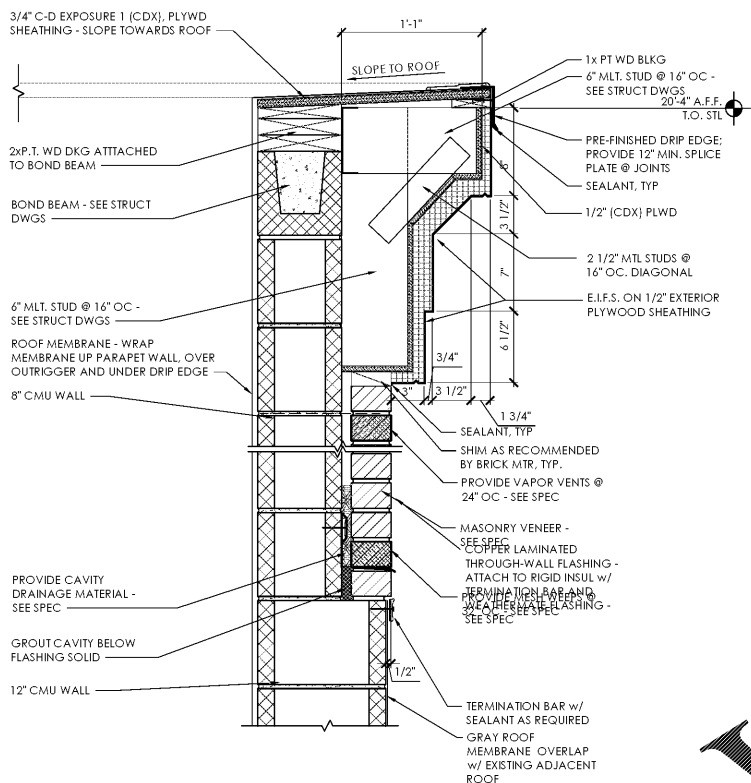
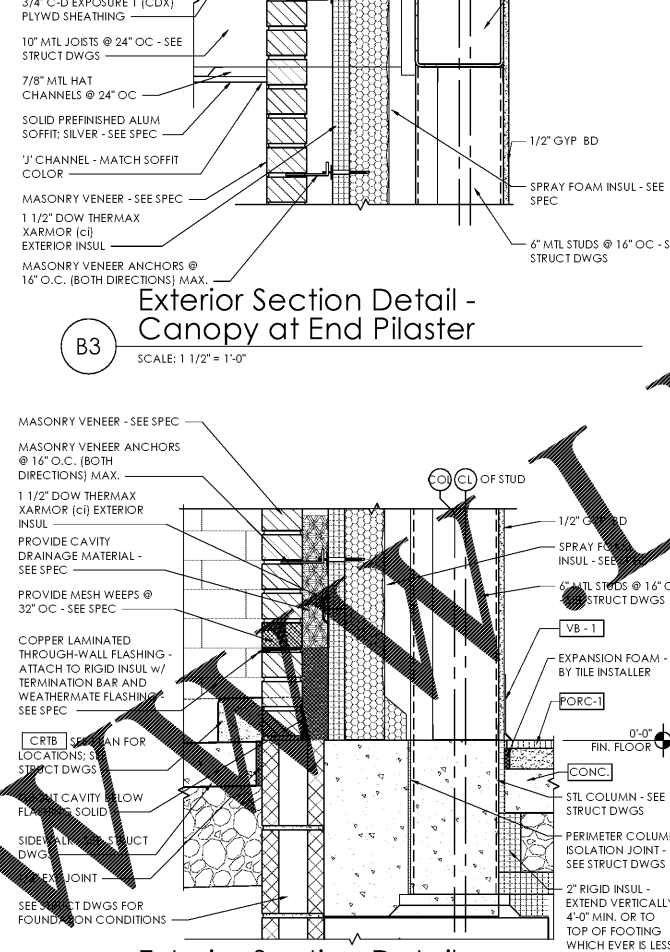


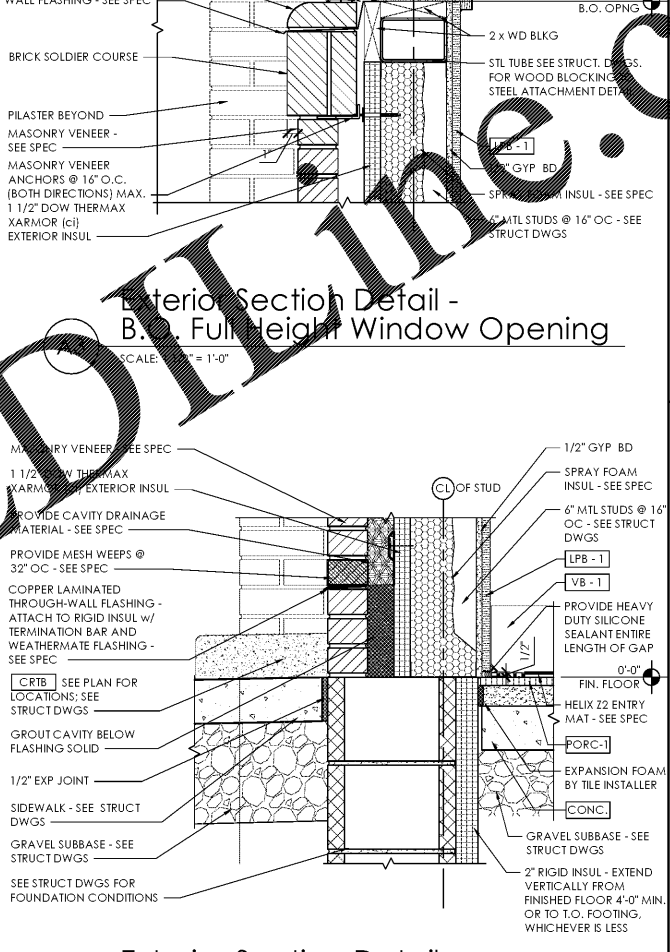
**Exterior Section Detail - CMU Wall at Back Elev**  
SCALE: 1 1/2" = 1'-0"



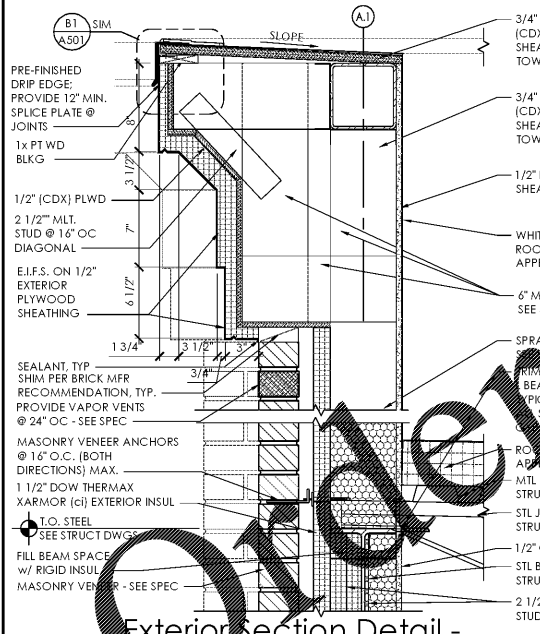
**Exterior Section Detail - Parapet at Field**  
SCALE: 1 1/2" = 1'-0"



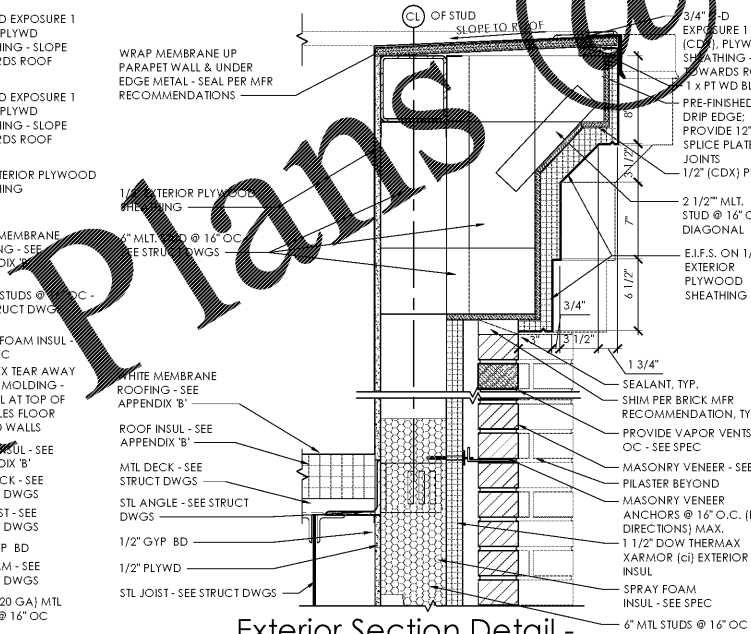
**Exterior Section Detail - Canopy at End Pilaster**  
SCALE: 1 1/2" = 1'-0"



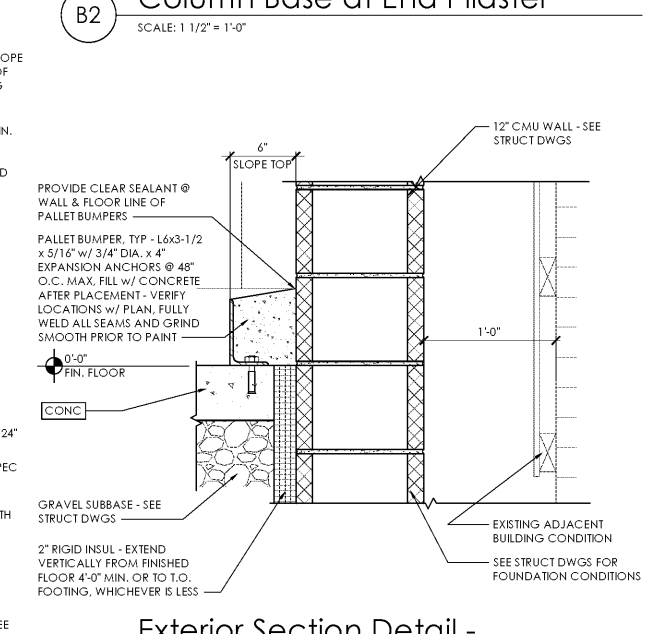
**Exterior Section Detail - Typ. Wall Base at Sidewalk**  
SCALE: 1 1/2" = 1'-0"



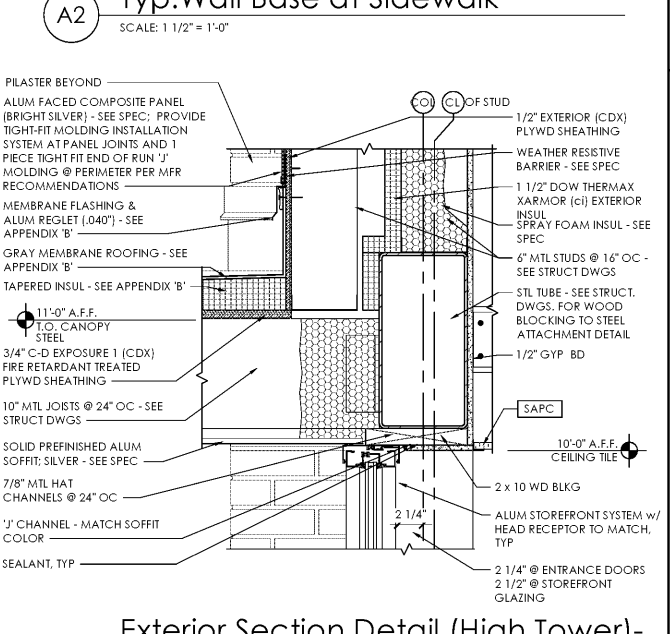
**Exterior Section Detail - Parapet at Field**  
SCALE: 1 1/2" = 1'-0"



**Exterior Section Detail - Parapet at Field**  
SCALE: 1 1/2" = 1'-0"



**Exterior Section Detail - Typ. Wall Base at Backroom**  
SCALE: 1 1/2" = 1'-0"



**Exterior Section Detail (High Tower) - Canopy Connection at Storefront**  
SCALE: 1 1/2" = 1'-0"

Issued:	Date:
A Client Review Set	04/07/17
B Permit Set	04/07/17
C Bid Set	09/05/17
D	
Revisions:	Date:
1	
2	
3	
4	
5	
6	
7	
8	
9	

**DO NOT SCALE PLANS**  
Copying, Printing, Software and other processes required to produce these prints can stretch or shrink the actual paper or layout. Therefore, scaling of this drawing may be inaccurate. Contact our consultants with any need for additional dimensions or clarifications.

**ms consultants, inc.**  
engineers, architects, planners  
2221 Schrock Road  
Columbus, Ohio 43229-1547  
phone 614.898.7100  
fax 614.898.7570

DRAWN BY: MYG  
REVIEWED BY: MJB/CLR

Seal  
PROFESSIONAL OF RECORD:  
ERIC ELIZONDO No. 0401016074  
EXP. DATE: 06/30/2018

**ALDI Inc.**  
1985 Old Union Church Road  
Salisbury, NC 28146  
(704) 642-0272  
(704) 642-0278 fax

ALDI Inc. Store #: 161  
VA Beach Blvd & Thalia  
4220 Virginia Beach Blvd  
Virginia Beach, VA 23452  
Willis Wayside  
Project Name & Location:

Exterior  
Details - Section  
Drawing Name:  
Prototype Rls. 02/08/17  
Project No. 40320-40  
Type: RHSD-V7  
A-502  
Scale: As Noted  
Drawing No.