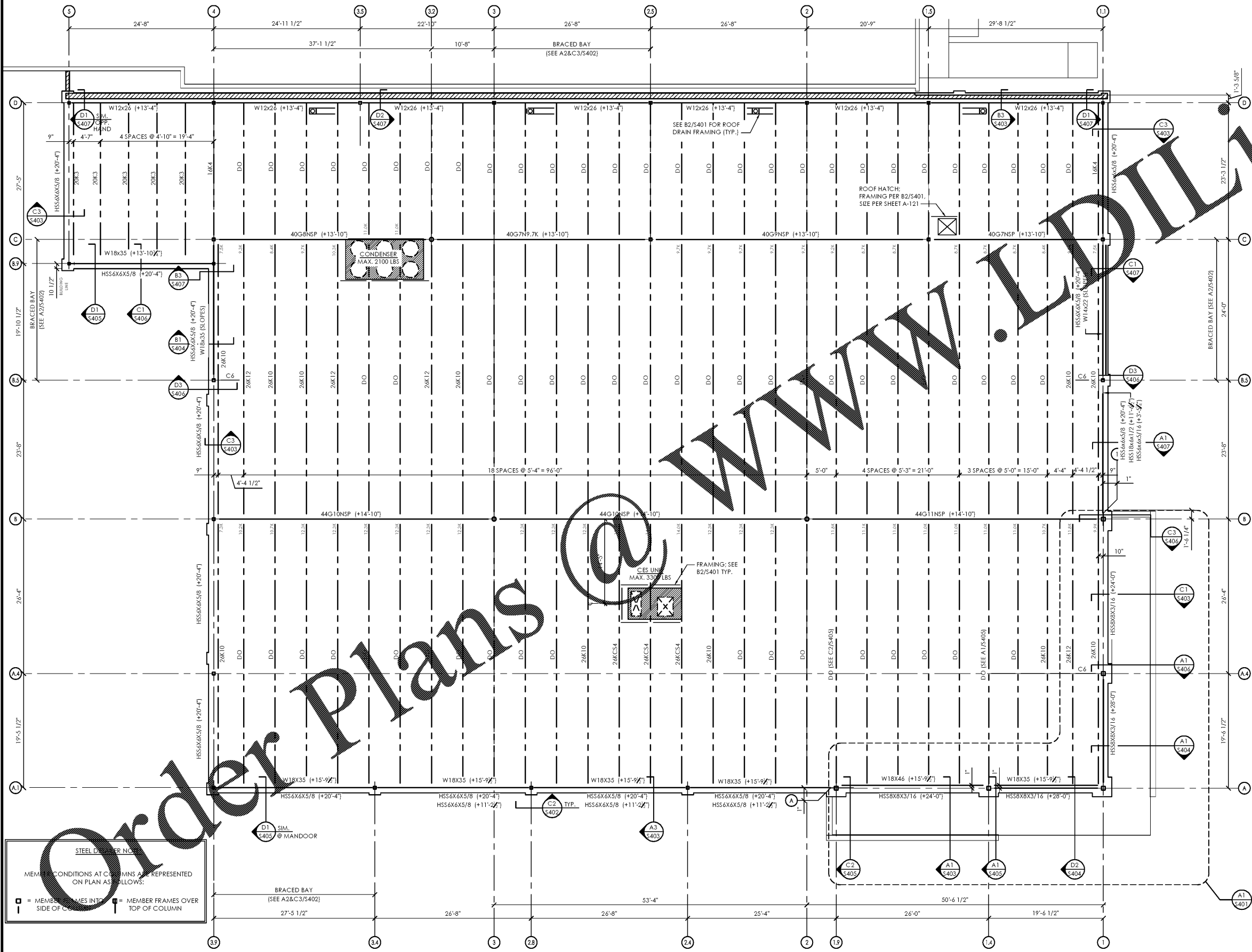


PLOTTED: 9/5/2017 3:35 PM



STEEL MEMBER NOTES

MEMBER CONDITIONS AT CONNECTIONS ARE REPRESENTED ON PLAN AS FOLLOWS:

□ = MEMBER ENDS INTO COLUMN
 ▨ = MEMBER FRAMES OVER TOP OF COLUMN

- ROOF FRAMING PLAN**
1/8" = 1'-0"
- PLAN NORTH
- TOP OF STEEL ELEVATIONS NOTED (+X'-X") ARE REFERENCED FROM FINISHED FLOOR DATUM ELEVATION. SEE GSN.
 - ROOF DECK SHALL BE 1 1/2" x 22 GAGE PAINTED TYPE B WIDE-RIB DECK. ALL EDGES OF ROOF DECK SHALL BEAR 1 1/2" MIN. ON STEEL PERIMETER ANGLE WITH ATTACHMENT PER THE TYPICAL ROOF DECK FASTENING SYSTEM DETAIL.
 - SEE MECHANICAL & ARCHITECTURAL DRAWINGS FOR THE BALANCE OF ALL EQUIPMENT, ROOF PENETRATIONS, ETC. REQUIRED AT THIS LEVEL. GENERAL CONTRACTOR SHALL COORDINATE ALL RTU LOCATIONS AND PENETRATIONS WITH MECHANICAL CONTRACTOR PRIOR TO STEEL FABRICATION.
 - DO NOT SCALE DRAWINGS. SEE ARCHITECTURAL FLOOR PLANS FOR ALL DIMENSIONS NOT INDICATED ON STRUCTURAL DRAWINGS.
 - BAR JOIST MANUFACTURER SHALL PROVIDE JOIST BRIDGING IN ACCORDANCE WITH STEEL JOIST INSTITUTE CRITERIA INCLUDING UPLIFT (SEE S-001).
 - JOIST END REACTIONS AS SHOWN ON PLAN INCLUDE DEAD LOAD, SNOW (OR ROOF LIVE) LOAD, AND JOIST GIRDER SELF WEIGHT. JOIST GIRDER MANUFACTURER TO DESIGN FOR THESE LOADS IN ADDITION TO WIND LOADS PER S-001.
 - GC TO ENSURE ALL JOIST AND JOIST GIRDER TAGS ARE PROPERLY SECURED TO JOIST WEBBING AND CONCEALED FROM VIEW PRIOR TO PAINTING

Issued:		Date:
A	Client Review Set	04/07/17
B	Permit Set	04/07/17
C	Bid Set	09/05/17
D		

Revisions:		Date:
1		
2		
3		
4		
5		
6		
7		
8		
9		

DO NOT SCALE PLANS

Copying, Printing, Software and other processes required to produce these prints on stretch or shrink the actual paper or layout. Therefore, scaling of this drawing may be inaccurate. Contact ms consultants with any need for additional dimensions or clarifications.

ms consultants, inc.
 engineers, architects, planners
 2221 Schrock Road
 Columbus, Ohio 43229-1547
 phone 614.898.7100
 fax 614.898.7570

DRAWN BY: C.JH
 REVIEWED BY: CEM

Seal

PROFESSIONAL OF RECORD:
 CRAIG E. METZGER No. 0402057475
 EXP. DATE: 03/31/2019

ALDI Inc.
 1985 Old Union Church Road
 Salisbury, NC 28146
 (704) 642-0023
 (704) 642-0078 fax

ALDI Inc. Store #: 161
 VA Beach Blvd & Thalia
 4220 Virginia Beach Blvd
 Virginia Beach, VA 23452
 Willis Wayside
 Project Name & Location:

Roof Framing Plan	
Drawing Name:	Project No.
Prototype Rls. 02/08/17	40320-40
Type: RHSD-V7	S-111
Scale: As Noted	Drawing No.