

GENERAL UTILITY NOTES:

1. ALL CONSTRUCTION TO BE IN ACCORDANCE WITH THE LATEST PUBLIC WORKS SPECIFICATIONS AND STANDARDS FOR VIRGINIA BEACH.
2. FIRE LANE MARKINGS SHOWN FOR REFERENCE ONLY. CONTRACTOR SHALL COORDINATE WITH FIRE MARSHAL TO VERIFY FIRE LANE MARKING AND/OR SIGNAGE REQUIREMENTS PRIOR TO INSTALLATION. UNLESS DIRECTED OTHERWISE BY THE FIRE MARSHAL, PAVEMENT MARKINGS SHALL CONSIST OF A 4" STRIPE WITH TWO COATS OF YELLOW TRAFFIC PAINT. ABOVE GROUND IRRIGATION EQUIPMENT SHALL BE COVERED BY AN ALL-WEATHER BOX OR DECORATIVE COVER.
3. CONTRACTOR TO VERIFY LOCATION AND DEPTH OF ALL EXISTING UTILITIES TO THEIR SATISFACTION PRIOR TO START OF CONSTRUCTION.
4. CONTRACTOR SHALL COORDINATE THE INSTALLATION OF GAS, ELECTRICAL, AND TELEPHONE SERVICE WITH THE APPROPRIATE LOCAL UTILITY COMPANIES.
5. ALL PROPOSED UTILITIES ARE TO BE INSTALLED UNDERGROUND INCLUDING ELECTRIC, TELEPHONE AND CATV.
6. WATER SERVICE INSTALLATION BEYOND THE METER SHALL BE THE PLUMBER'S RESPONSIBILITY AND WILL BE INSPECTED BY THE BUILDING INSPECTION OFFICE.
7. REFER TO SHEET CU-101 FOR ALL EXISTING EASEMENTS.
8. CONTRACTOR SHALL COORDINATE WITH THE VIRGINIA PUBLIC UTILITIES DEPARTMENT FOR THE INSTALLATION OF WATER METERS.
9. CROSS CONNECTION CONTROL AND BACK FLOW PREVENTION SHALL BE INTERNAL TO THE BUILDING AND IN ACCORDANCE WITH THE UNIFORM STATEWIDE BUILDING CODE. REFER TO ARCHITECTURAL PLANS.
10. AN APPROVED KEY BOX SHALL BE PROVIDED IN ACCORDANCE WITH THE INTERNATIONAL FIRE CODE, SECTION 506.1.
11. NO LANDSCAPING OF ANY TYPE SHALL BE PLACED WITHIN A THREE FOOT RADIUS OF ANY FIRE HYDRANT, FIRE PUMP TEST HEADER, FIRE DEPARTMENT SPRINKLER SYSTEM CONNECTION, FIRE DEPARTMENT STANDPIPE CONNECTION, OR FIRE SUPPRESSION CONTROL VALVE. LANDSCAPING IN THE AREA OF FIRE HYDRANTS, FIRE PUMP TEST HEADERS, FIRE DEPARTMENT SPRINKLER SYSTEM CONNECTIONS, OR FIRE DEPARTMENT STANDPIPE CONNECTIONS SHALL BE OF THE TYPE THAT WILL NOT ENCRUMBER THE REQUIRED THREE FOOT CLEAR RADIUS OF THE LANDSCAPING.
12. BRASS FITTINGS TO MEET CDA NO. CB9520, WITH NO MORE THAN ONE-FOURTH OF ONE PERCENT (0.25% OR LESS) TOTAL LEAD CONTENT BY WEIGHT FOR CORPORATION STOPS, METER VALVES, AND SERVICE COUPLINGS.
13. FIRE SAFETY AND FIRE DEPARTMENT ACCESS DURING CONSTRUCTION AND DEMOLITION SHALL BE ADHERED TO PER THE STATEWIDE FIRE PREVENTION CODE, CHAPTER 33, AND NFPA 241, AS APPLICABLE.

APPROXIMATE WATER QUANTITIES (PUBLIC):

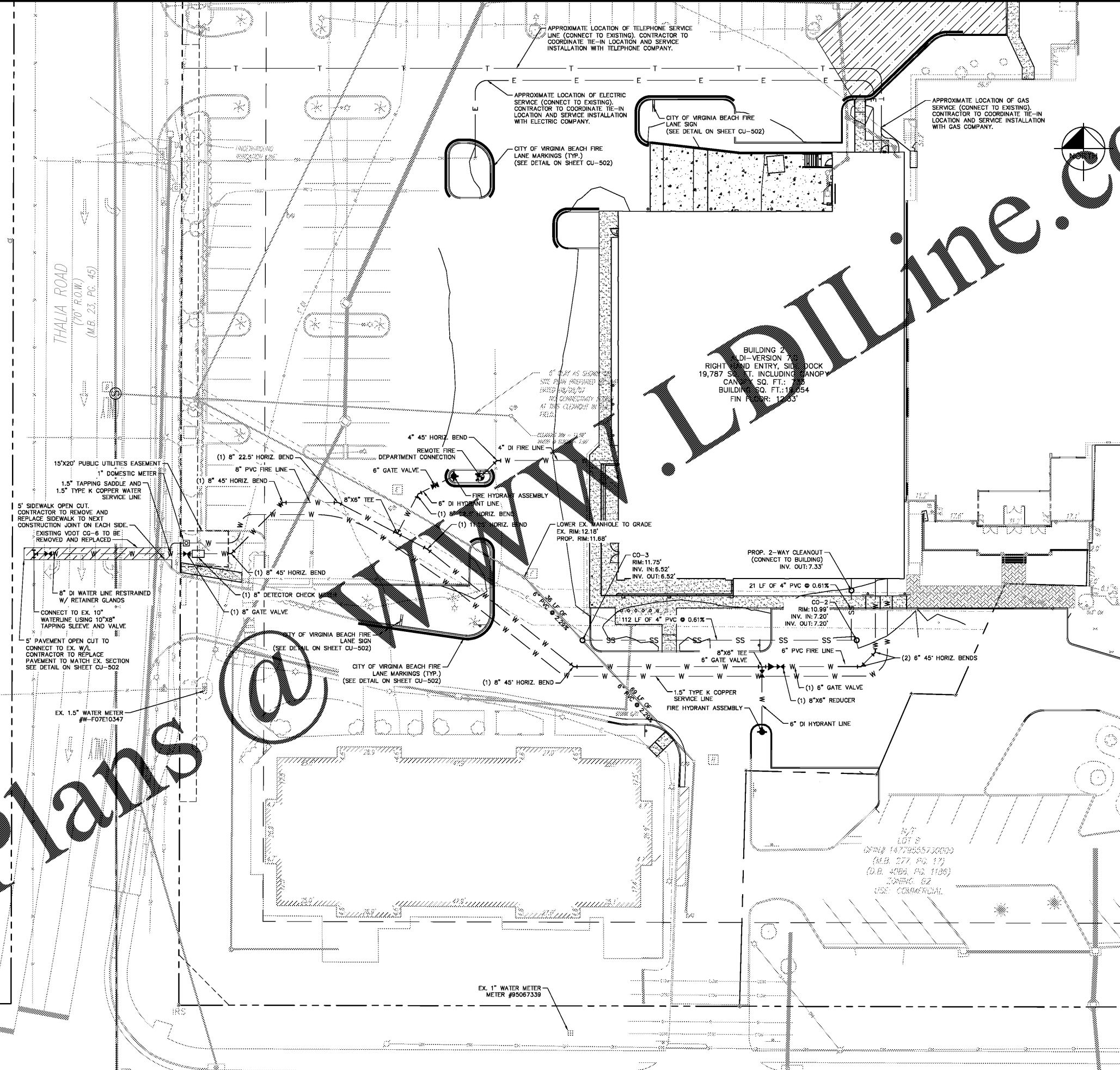
8" DI FIRE LINE	72 LF
1.5" TYPE K COPPER SERVICE LINE	26 LF
8" DETECTOR CHECK METER	1 EA.
10"XB" TAPPING SLEEVE & VALVE	1 EA.
8" GATE VALVE	1 EA.
1" DOMESTIC WATER METER	1 EA.
1.5" TAPPING SADDLE	1 EA.

APPROXIMATE WATER QUANTITIES (PRIVATE):

1.5" TYPE K COPPER SERVICE LINE	344 LF
8" PVC FIRE LINE	341 LF
6" PVC FIRE LINE	73 LF
8" DI FIRE LINE	61 LF
4" DUCTILE IRON LINE	61 LF
8" 45° HORIZ. BEND	3 EA.
6" 45° HORIZ. BEND	2 EA.
4" 45° HORIZ. BEND	1 EA.
8" 22.5° HORIZ. BEND	2 EA.
8"XB" REDUCER	1 EA.
8"XB" TEE	2 EA.
6" GATE VALVE	3 EA.
FIRE HYDRANT	2 EA.
REMOTE FIRE DEPT. CONNECTION	1 EA.

APPROXIMATE SAN. SEWER QUANTITIES (PRIVATE):

4" PVC SAN. SEWER LINE	138 LF
CLEANOUT	3 EA.



Issued: 08/23/17

A	BID SET	08/23/17
B		
C		
D		

Revisions: 05/11/2017

1	ADDRESSED CITY COMMENTS	05/11/2017
2	ADDRESSED CITY COMMENTS	07/11/2017
3		
4		
5		



Seal PROJECT ARCHITECT/ENGINEER DATE

PROJECT LEAD DATE

PROJECT DESIGNER DATE

Kimley»Horn

Kimley-Horn and Associates, Inc.

1700 Willow Lawn Drive, Suite 200
Richmond, Virginia 23230
(804) 673-3882



ALDI Inc.

Virginia Beach Blvd & Thalia Road

Virginia Beach, VA

Project Name & Location:

UTILITY PLAN

Drawing Name: Project No. 113180024

Date: 02/08/17

Type:

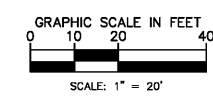
Drawn By: SMP

Scale: As Noted

CU-101

Drawing No.

Order Plans @



DSC FILE #F07-004902-SP