

Typical Traffic Control Lane Closure on a Two-Lane Roadway Using Flaggers (Figure TTC-23.1) NOTES

- Guidance: 1. Sign spacing distance should be 350'-500' where the posted speed limit is 45 mph or less... Standard: 4. Flagging stations shall be located far enough in advance of the work space to permit approaching traffic to reduce speed and/or stop before passing the work space... Option: 8. A supplemental flagger may be required in this area to give advance warning of the operation ahead by slowing approaching traffic prior to reaching the flagger station or queued traffic.

Table with 2 columns: Posted Speed, PTRS Spacing (Center to Center). Rows for 0-35 mph and 36-55 mph.

1: Revision 1 - 4/1/2015

Typical Traffic Control Turn Lane Closure Operation (Figure TTC-29.1) NOTES

- Guidance: 1. Sign spacing distance should be 350'-500' where the posted speed limit is 45 mph or less... Standard: 6. Taper Length (L) shall be: [Table with Speed Limit and Lane Width columns]. 7. Buffer Space Length shall be: [Table with Posted Speed Limit and Distance columns].

Table: Taper Length (L) shall be. Columns: Speed Limit (mph), Lane Width (Feet) [9, 10, 11, 12].

Table: Buffer Space Length shall be. Columns: Posted Speed Limit (mph), Distance (Feet).

- Guidance: 8. If the work space extends across a crosswalk, the crosswalk should be closed using the information and devices shown in Figure TTC-36. Support: 9. Turns can be prohibited as required by vehicular traffic conditions.

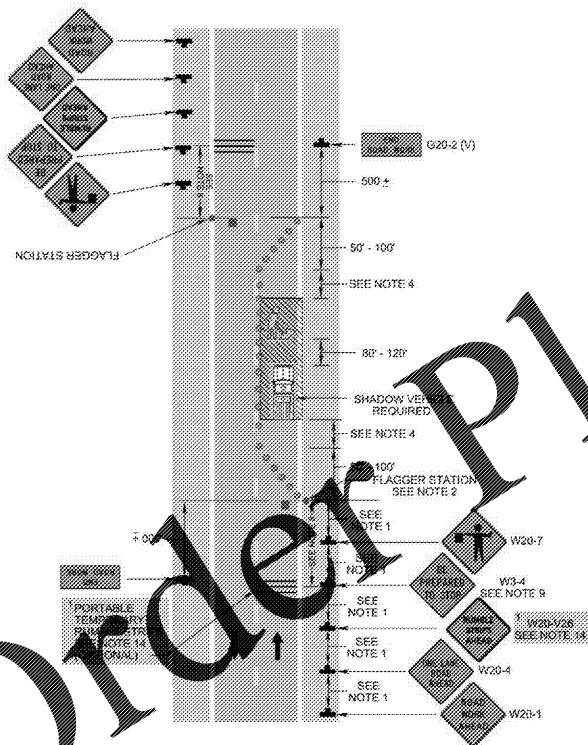
1: Revision 1 - 4/1/2015

Typical Traffic Control Sidewalk Closure and Bypass Sidewalk Operation (Figure TTC-35.0) NOTES

- Standard: 1. When crosswalks or other pedestrian facilities are closed or relocated, temporary facilities shall be detectable and shall include accessibility features consistent with the features present in the existing pedestrian facility. Guidance: 2. Where high speeds are anticipated, a temporary traffic barrier and, if necessary, a crash cushion should be used to separate the temporary sidewalks from vehicular traffic.

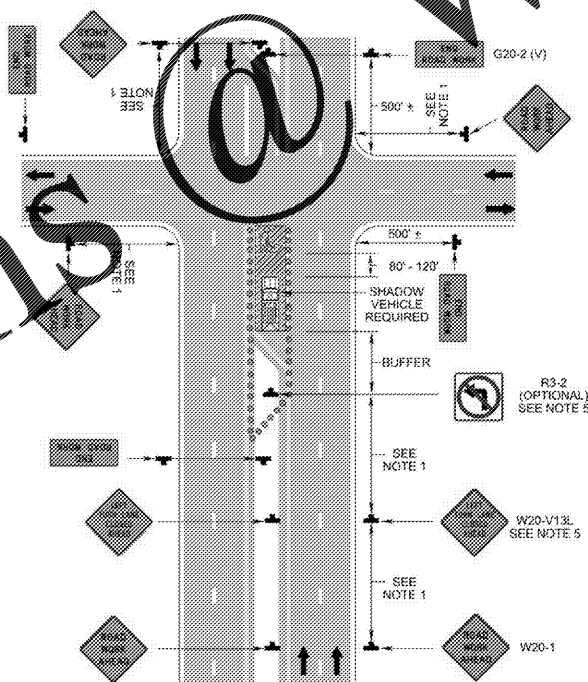
- Standard: 8. All sidewalk closures shall be closed with Type 3 Barricades.

Lane Closure on a Two-Lane Roadway Using Flaggers (Figure TTC-23.1)

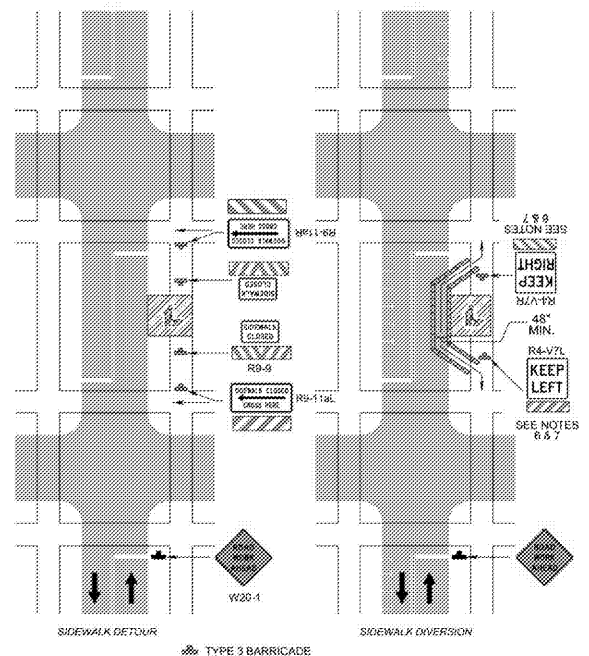


1: Revision 1 - 4/1/2015

Turn Lane Closure Operation (Figure TTC-29.1)



Sidewalk Closure and Bypass Sidewalk Operation (Figure TTC-35.0)



NOTE: ALL WORK ON THALIA ROAD MUST BE DONE BETWEEN 9:00 AM AND 4:00 PM

DSC FILE #F07-004902-SP

Table with columns: Issued, Date, Revisions, Date. Rows for BID SET and ADDRESS CITY COMMENTS.

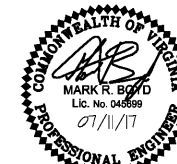
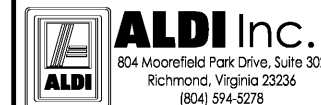


Table with columns: Seal, PROJECT ARCHITECT/ENGINEER, DATE, PROJECT LEAD, DATE, PROJECT DESIGNER, DATE.

Kimley Horn

Kimley-Horn and Associates, Inc.

1700 Willow Lawn Drive, Suite 200 Richmond, Virginia 23220 (804) 673-3882



ALDI Inc. Virginia Beach Blvd & Thalia Road Virginia Beach, VA Project Name & Location:

TEMPORARY TRAFFIC CONTROL

Table with columns: Drawing Name, Date, Type, Drawn By, Scale, Project No., Drawing No.