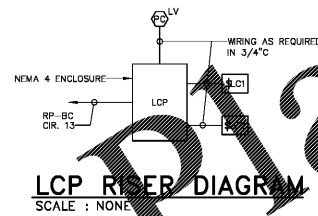
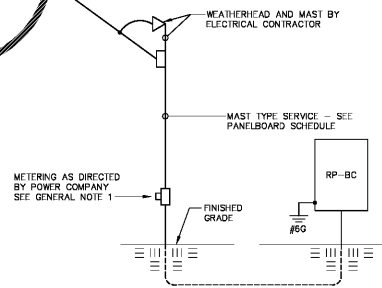


**DETAIL "E-MSG"**  
**MAIN SERVICE GROUNDING**  
SCALE : NONE

- DETAIL NOTES**
1. ALL GROUNDING ELECTRODE CONDUCTORS AND MAIN BONDING JUMPERS SHALL BE INSULATED COPPER, SIZED IN ACCORDANCE WITH NEC TABLE 250.66 UNLESS NOTED OTHERWISE.
  2. ADDITIONAL GROUND RODS SHALL BE INSTALLED A MINIMUM OF SIX (6) FEET APART AND CONNECTED BY GROUNDING ELECTRODE CONDUCTORS UNTIL THE GROUND RESISTANCE DOES NOT EXCEED FIVE (5) OHMS.
  3. ALL GROUNDING CONDUCTORS SHALL BE INSTALLED IN CONDUIT (TYPE PER SPECIFICATION REQUIREMENTS) UNLESS SPECIFICALLY NOTED OTHERWISE. METAL CONDUITS SHALL BE GROUNDED PER NEC REQUIREMENTS.
  4. REFER TO "GROUNDING" SPECIFICATIONS SECTION FOR ADDITIONAL GROUNDING REQUIREMENTS.



**LCP RISER DIAGRAM**  
SCALE : NONE



**SINGLE LINE DIAGRAM**  
SCALE : NONE

GENERAL ELECTRICAL LEGEND	
	FIXTURE OUTLET - LINEAR - SURFACE OR PENDANT MOUNTED LIGHT FIXTURE.
	LIGHTING CONTROL SYSTEM - SWITCH OUTLET - DIGITAL LOW-VOLTAGE - SWITCH TO OPERATE RELAY(S) IN LIGHTING CONTROL PANEL (AS INDICATED WITHIN LIGHTING CONTROL PANEL SCHEDULES) PROVIDE NUMBER OF BUTTONS AS REQUIRED - * INDICATES SWITCH IDENTIFIER - WITH BI-COLOR PILOT LIGHT STATUS LED'S AND MECHANICALLY-PRINTED LABELING FOR EACH BUTTON - GREY WITH STAINLESS STEEL COVERPLATE.
	PHOTOELECTRIC CONTROL - LOW VOLTAGE - COMPATIBLE WITH LIGHTING CONTROL PANEL - MOUNT UNDER SOFFIT OR ON ROOF FACING NORTH.
	LIGHTING CONTROL PANEL.
	WALL OUTLET - RECEPTACLE - 20A - 125V - 2P - 3W - GROUNDING - "GF" TYPE - WEATHER RESISTANT - NEMA 3-20R - SINGLE PLATE.
OUTLET INSTALLATION DESIGNATIONS (APPLY TO ALL OUTLETS, DEVICES & EQUIPMENT):	
A	ABOVE COUNTER - OUTLET SHALL BE MOUNTED 6 INCHES ABOVE DESK/COUNTERTOP OR 4 INCHES ABOVE COUNTERTOP BACKPLASH AS REQUIRED BY CONDITION FOR 48" A COUNTER AS NOTED.
C	OUTLET MOUNTED FLUSH WITH CEILING - VERIFY EXACT LOCATION PRIOR TO ROUGH-IN.
OPR	OUTLET MOUNTED TO INDUSTRIAL CORD REEL - HUBBELL HUBBELL 250 INDUSTRIAL CORD REEL (AT STRUCTURE ABOVE) WITH 12/3 SIZED PENDANT CABLE (45" MINIMUM) TO SOCKET BOX (AT END OF CABLE) WITH RECEPTACLE TYPE (GFCI, ETC.) AS INDICATED IN PLANS.
CW	INSTALL OUTLET WITHIN SEWERWORK AND ROUTE CIRCUIT WITHIN CONDUIT WITHIN CABLEWORK AS DIRECTED BY CASH/POWER PROVIDER.
E	EMERGENCY CIRCUIT - PROVIDE RED DEVICE - MAINTAIN SEPARATION BETWEEN NORMAL AND EMERGENCY CIRCUITRY (AND SEPARATE CONDUITS AND METAL BUNDLES AS REQUIRED) PER NEC ARTICLE 708(B).
GFR	CONNECT ASSOCIATED OUTLET DOWNSTREAM OF REMOTE, RECESSED FACELESS GFI DEVICE - DEVICE AND COVER PLATE FINISH SHALL MATCH ASSOCIATED OUTLET - LOCATE GFI DEVICE AS INCONSPICUOUS AS POSSIBLE - ADJACENT TO ASSOCIATED LOCATION ADJACENT TO ASSOCIATED EQUIPMENT.
VL	VERIFY EXACT OUTLET LOCATION WITH OWNER PRIOR TO ROUGH-IN.
W	WEATHER PROOF - OUTLET SHALL BE INSTALLED WITH WEATHERPROOF, IN-USE, CAST COVER.
WG	WIRE GUARD - EQUIPMENT DEVICES SHALL BE PROVIDED WITH FACTORY FURNISHED WIREGUARD.
BRANCH/FEEDER CIRCUIT - CONCEALED IN WALLS OR CEILING.	
BRANCH/FEEDER CIRCUIT - HOMERUN - CAN BE USED WITH OTHER BRANCH/FEEDER TYPES.	
BRANCH/FEEDER CIRCUIT MODIFIERS:	
	: 2#12 & 1#12G UNLESS NOTED OTHERWISE.
	: 3#12 & 1#12G, ETC. UNLESS NOTED OTHERWISE (TICK MARKS INDICATE CONDUCTOR QUANTITY NOT INCLUDING GROUND WIRE).
	: 2#10 & 1#10G UNLESS NOTED OTHERWISE (NUMBER INDICATES WIRE AWG).
SIZE CONDUIT PER N.E.C. UNLESS INDICATED OTHERWISE.	
	LIGHTING PANEL - SURFACE MOUNTED.
	GROUND CONNECTION.

- GENERAL ELECTRICAL NOTES**
1. CONTRACTOR SHALL VERIFY ALL REQUIREMENTS FOR POWER SERVICE WITH UTILITY COMPANY PRIOR TO SUBMITTING BID. IF THEIR REQUIREMENTS ARE AT A VARIANCE WITH THOSE SHOWN ON PLANS THE CONTRACTOR SHALL INFORM ARCHITECT IMMEDIATELY. ALL COSTS INCURRED WITH THE UTILITY COMPANY FOR SERVICE SHALL BE INCLUDED IN BID PRICE. IF SUCH COSTS ARE NOT AVAILABLE AT BID TIME CONTRACTOR SHALL INCLUDE WITH BID A LETTER FROM A RESPONSIBLE PARTY WITH THE UTILITY COMPANY STATING SUCH, AND COSTS WILL THEN BE EXCLUDED FROM THE BID PRICE.
  2. CONTRACTOR SHALL VISIT THE SITE OF THE WORK PRIOR TO SUBMITTING BID TO EXAMINE CAREFULLY LOCAL CONDITIONS AND DIFFICULTIES TO BE ENCOUNTERED. ANY DISCREPANCY BETWEEN PLANS AND EXISTING CONDITIONS SHALL IMMEDIATELY BE CALLED TO THE ATTENTION OF THE ARCHITECT.
  3. REMOVE ALL EXISTING ELECTRICAL EQUIPMENT AND WIRING MADE OBSOLETE BY THIS RENOVATION AND DISPOSE OF AS DIRECTED BY THE ARCHITECT.
  4. EXISTING PANEL DIRECTORY CARDS MODIFIED BY THIS RENOVATION SHALL BE RETYPED TO INDICATE CONNECTED CIRCUITS.
  5. THIS CONTRACTOR SHALL FURNISH ALL MATERIALS AND LABOR NECESSARY TO EXTEND CIRCUITS AND MAKE RECONNECTIONS TO ANY ACTIVE ELECTRICAL DEVICES ON WHICH THE BRANCH CIRCUIT IS INTERRUPTED BY THIS ALTERATION. CARE SHALL BE TAKEN TO INSURE THAT EXISTING PANEL AND FEEDER RATINGS ARE NOT EXCEEDED.

ISSUE	DATE
CONSTRUCTION DOCUMENTS	04/17/17
drawn by: JUD	
checked by: JCI	

BATTING CAGES FOR LEEDS CITY SCHOOLS  
LEEDS BOARD OF EDUCATION  
GMC # ABHM16000



LEGEND, NOTES & DIAGRAMS  
E1.02  
Sheet 1 of 1