

**KEY NOTES**

- ALL CIRCUITS SERVING CASH WRAP TO BE PROVIDED WITH DEDICATED NEUTRALS.
- FURNISH AND INSTALL CONDUIT AND CONNECTIONS FOR STOREFRONT DOOR SECURITY SYSTEM (EAS). JUNCTION BOXES FOR CHECKOUT STATION SHALL BE INSTALLED IN 12" WIDE SHADED AREA BETWEEN SECURITY PANEL AND EDGE OF MANAGER'S WORK STATION. FIELD COORDINATE EXACT LOCATION OF THIS DESIGNATED AREA WITH STORE SPECIFIC FIXTURE PLAN AND FDS PROJECT MANAGER PRIOR TO BEGINNING CONSTRUCTION.
- PROVIDE DEDICATED ISOLATED GROUND RECEPTACLES WITH ISOLATED GROUNDING CONDUCTOR BACK TO SERVICE GROUND. RECEPTACLES SHALL BE "ORANGE" WITH WHITE COVER PLATE.
- D&P POWERPOLES SHIPPED WITH CHECKOUTS. INSTALL PER MANUFACTURER'S RECOMMENDATIONS. COORDINATE EXACT LOCATIONS AND REQUIREMENTS WITH GC PRIOR TO INSTALLATION.
- FURNISH AND INSTALL WIRING FOR PROMO DISPLAY. CIRCUIT SHALL BE TERMINATED AT A JUNCTION BOX MOUNTED TO BOTTOM OF PURLIN/ROOF JOIST. INSTALL "POWER DROP KIT" AND WIRE END WITH PIGTAIL TO JUNCTION BOX. COIL MC CABLE UP OUT OF THE WAY FOR FUTURE CONNECTION BY FDS FIXTURE INSTALLER TO PROMO DISPLAY. "POWER DROP KIT" IS BEING FURNISHED BY FAMILY DOLLAR WITH THE CHECKOUT STATIONS. SEE DETAIL 1/E2.2 FOR "POWER DROP KIT INSTALLATION" DETAIL.
- PROVIDE AND INSTALL FLUSH MOUNTED IG RECEPTACLE IN WALL 18" AFF FOR APPLICATION STATION AND ATM. IN STORES WHERE APPLICATION STATION AND ATM ARE GREATER THAN 4' APART IG RECEPTACLES SHALL BE PROVIDED FOR EACH. RECEPTACLES SHALL BE "ORANGE" WITH WHITE COVER PLATE.
- FURNISH AND INSTALL CONDUIT FOR EXTERIOR BUILDING SIGNS. CIRCUITS SHALL BE TERMINATED AT A JUNCTION BOX(ES) LOCATED MINIMUM 12'-0" AFF. SIGN CIRCUITS SHALL BE CONTROLLED BY PHOTOCELL AND TIMECLOCK (VIA VENSTAR SYSTEM). FINAL CONNECTIONS SHALL BE MADE BY THE ELECTRICAL CONTRACTOR. COORDINATED REQUIRED JUNCTION BOX QUANTITIES AND LOCATION WITH ARCHITECTURAL ELEVATIONS AND SIGN SUPPLIER PRIOR TO ELECTRICAL ROUGH-IN.
- PROVIDE A (1') ONE FOOT PIECE OF 3" EMPTY CONDUIT RUNNING THROUGH THE WALL AT LOCATIONS AS SPECIFIED ON THE PLANS. ALL CONDUITS SHALL BE LOCATED 6" BELOW ROOF PURLINS. PROVIDE FIRE CAULK AND CAP OFF CONDUIT FOR FUTURE USE BY FAMILY DOLLAR.
- PROVIDE ELECTRICAL CIRCUIT FOR HEAT TAPE ON DOMESTIC WATER LINES IF REQUIRED. FIELD COORDINATE EXACT ELECTRICAL REQUIREMENTS AND LOCATION WITH PLUMBING CONTRACTOR.
- EXTERIOR RECEPTACLES SHALL BE GFI, WEATHERPROOF AND RECESSED IN WALL WITH FACE FLUSH WITH WALL. PROVIDE "IN-USE" COVERS.
- PROVIDE (3) DEDICATED ISOLATED GROUND RECEPTACLES WITH ISOLATED GROUNDING CONDUCTOR BACK TO SERVICE GROUND. RECEPTACLES SHALL BE MOUNTED AT COMMUNICATION BOARD. SEE COMMUNICATIONS BOARD DETAIL 3/E2.1 FOR MOUNTING LOCATIONS AND INSTRUCTIONS ON USING STENCIL FOR LOCATING RECEPTACLES. RECEPTACLES SHALL BE "ORANGE" WITH WHITE COVER PLATES.
- FURNISH AND INSTALL WIRING AND HOOKUP FOR SECURITY MONITOR. CIRCUIT SHALL BE TERMINATED TO A DUPLEX RECEPTACLE MOUNTED 12"-0" AFF. VERIFY EXACT LOCATION WITH TENANT'S CONSTRUCTION REPRESENTATIVE. SEE MONITOR DETAIL ON ARCHITECTURAL DRAWINGS FOR ADDITIONAL INSTALLATION INSTRUCTIONS.
- MOUNT ALL RECEPTACLES AND TELEPHONE OUTLETS IN OFFICE AT 24" A.F.F.
- VENSTAR LIGHTING CONTROL PANEL LOCATED NEXT TO ELECTRICAL PANELS. LIGHTING CONTROL PANEL SHALL BE FURNISHED AND INSTALLED BY ENERGY MANAGEMENT SYSTEM CONTRACTOR. SEE DETAIL 1/E1.0 AND SHEET E3.0 FOR DETAILS.
- MC CABLE IS ALLOWED AS BUILDING STANDARD WHERE LOCAL CODE JURISDICTION WILL ALLOW. ALL MC CABLE SHALL BE RUN OVERHEAD, AND IN A NEAT AND ORGANIZED FASHION. WHERE CODE DOES NOT ALLOW MC CABLE, ALL EXPOSED CONDUIT SHALL BE RUN TIGHT TO CEILING CONSTRUCTION AND CONCEALED FROM VIEW WHEREVER POSSIBLE.
- PROVIDE JUNCTION BOX WITH 3/4" CONDUIT WITH PULL STRING ABOVE DOOR FOR WIRING OF DOOR CONTACTS. ROUTE CONDUITS TO COMMUNICATION BOARD. PAINT JUNCTION BOX AND EXPOSED CONDUIT TO MATCH WALL COLOR.
- PROVIDE 4'x4' FIRE RETARDANT PLYWOOD WITH A UL CLASSIFICATION STAMP THAT MEETS OR EXCEEDS THE REQUIREMENTS FOR CLASS 1 OR CLASS A FLAMESPREAD RATING (IBC 2012 SECTION 2303.2). MOUNT BOTTOM OF BACKBOARD 2'-8" A.F.F. WITH EDGE OF BACKBOARD TIGHT AGAINST ADJACENT WALL. PROVIDE ISOLATED GROUND QUAD RECEPTACLE WITH ISOLATED GROUNDING CONDUCTORS BACK TO SERVICE GROUND. RECEPTACLES SHALL BE MOUNTED AT 24" A.F.F. EACH SIDE OF QUAD SHALL BE A DEDICATED CIRCUIT (DO NOT SHARE A NEUTRAL. SEPARATE NEUTRALS ARE REQUIRED). RECEPTACLES SHALL BE "ORANGE" WITH WHITE COVER PLATES.
- ELECTRICAL CONTRACTOR SHALL PROVIDE A WEATHERPROOF JUNCTION BOX FOR LIGHTED ROAD SIGN. MOUNT TO SIGN PEDESTAL OR POLE. ELECTRICAL CONTRACTOR SHALL RUN WIRE IN CONDUIT AS SPECIFIED ON PLANS TO THE ELECTRICAL CONTRACTOR. SIGN CIRCUIT TO BE CONTROLLED BY PHOTOCELL AND TIMECLOCK (VIA VENSTAR SYSTEM). EC/GC SHALL VERIFY ROAD SIGN ELECTRICAL REQUIREMENTS WITH FDS PROJECT MANAGER PRIOR TO BID.
- PROVIDE JUNCTION BOX AND 3/4" CONDUIT WITH PULL STRING AND COVERPLATE AT 9'-0" AFF FOR BURGLAR ALARM MOTION SENSORS. ROUTE CONDUITS TO COMMUNICATION BOARD. COVERPLATE TO MATCH WALL COLOR.
- PROVIDE JUNCTION BOX WITH 3/4" CONDUIT WITH PULL STRING ABOVE DOOR FOR WIRING OF DOOR CONTACTS. ROUTE CONDUITS TO COMMUNICATION BOARD. PAINT JUNCTION BOX AND EXPOSED CONDUIT TO MATCH WALL COLOR.

**BALER NOTE:** DEVELOPER/GENERAL CONTRACTOR TO CONTACT THE FAMILY DOLLAR CONSTRUCTION PROJECT MANAGER FOR EACH STORE LOCATION TO DETERMINE IF A 10 HP BALER IS REQUIRED. PROVIDE (1) 60A, 3P DISCONNECT FUSED AT 40A FOR PTR BALER & COMPACTOR MODEL #2300HD (10HP). CONTACT FDS FOR EXACT BALER SPECIFICATIONS AND LOCATION IN SALES SUPPORT AREA. IN STORES WHERE BALER IS PROVIDED, FEEDER PANEL B WILL BE UPGRADED FROM 125AMPS TO 150AMPS AND FOR STORES WITH 5-ALL ELECTRIC HVAC UNITS, BUILDING POWER SERVICE MAY REQUIRE AN UPGRADE FROM 400AMPS TO 600AMPS. COORDINATE FOR EACH STORE LOCATION.

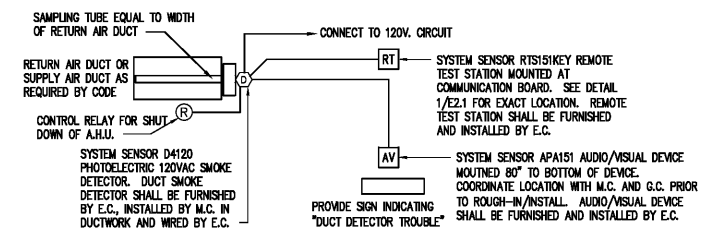
**FOR ALTERNATE ICE CREAM BUNKER LOCATION ONLY:** COORDINATE WITH STORE SPECIFIC FIXTURE PLAN TO DETERMINE IF ICE CREAM BUNKER WILL BE INSTALLED AND ITS LOCATION. IF ICE CREAM BUNKER IS SHOWN IN AN ALTERNATE LOCATION NEXT TO THE ATM AND APP STATION, THEN EC SHALL PROVIDE AND INSTALL FLUSH MOUNTED RECEPTACLE IN WALL 18" AFF (NOTE: ICE CREAM BUNKER IS NORMALLY LOCATED AGAINST THE SECURITY PANEL AT THE CHECKOUT STATIONS OR AT THE END OF THE CHECKOUT STATIONS AND PLUGS INTO RECEPTACLES AT THE CHECKOUT STATIONS)

GENERAL CONTRACTOR SHALL ENSURE THAT THE TELEPHONE INFRASTRUCTURE (UP TO 3 PHONE LINES AND BACKBOARD) IS IN PLACE PRIOR TO DEVELOPER'S ISSUANCE OF DELIVERY NOTICE.

FIELD ROUTE ALL ELECTRICAL CONNECTIONS FOR ROOF MOUNTED HVAC AND COOLER CONDENSERS TO NEAREST SIDE WALL. ALL ELECTRICAL CONNECTIONS SHALL PENETRATE THE NEAREST SIDE WALL IN THE SAME LOCATION. ROOF PENETRATIONS WILL NOT BE ACCEPTED BY FAMILY DOLLAR.

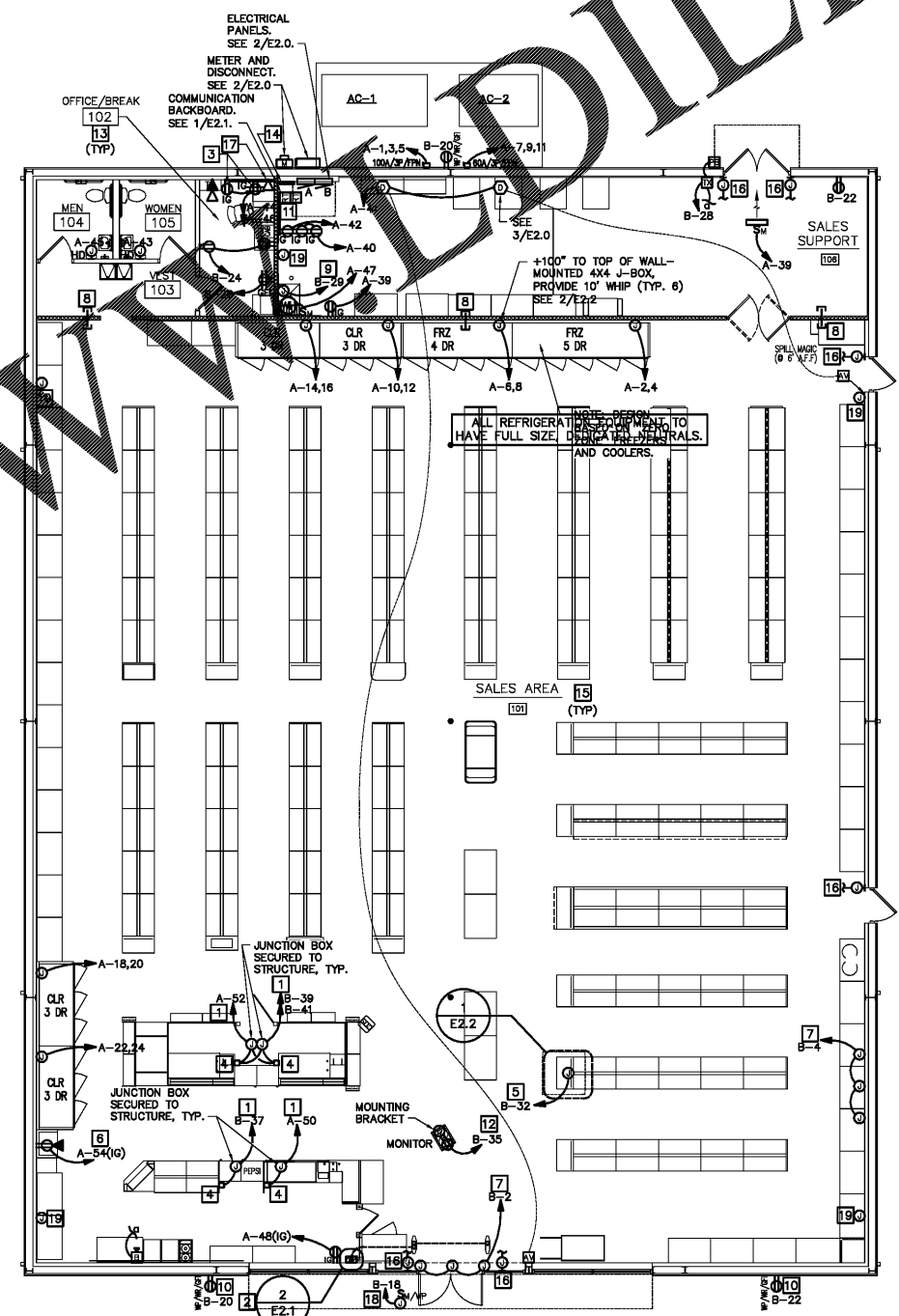
EC/GC SHALL REFER TO LV1.0 AND OR LV1.1 FOR ADDITIONAL ELECTRICAL DEVICES TO BE INSTALLED OR CONDUIT TO BE ROUTED FOR ALL DATA/LOW VOLTAGE REQUIREMENTS.

WHEN PULLING CABLE IN EMPTY CONDUITS, PROVIDE ADDITIONAL PULL STRING AT ENTIRE LENGTH OF CONDUIT FOR POSSIBLE FUTURE CABLE INSTALLATION.



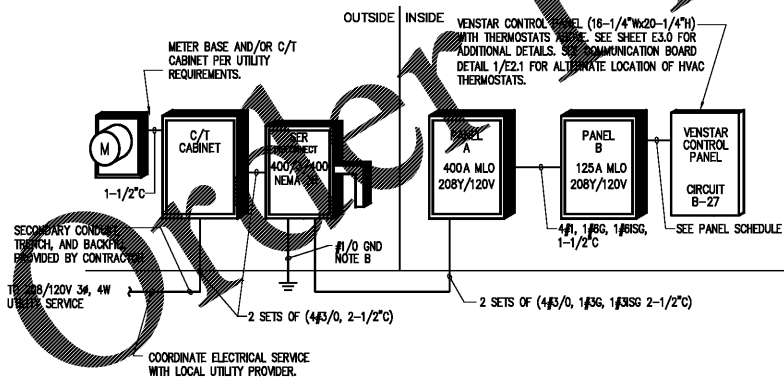
ALL EQUIPMENT AND INSTALLATION SHALL COMPLY WITH THE LATEST LOCAL CODES.  
EC TO PROVIDE, WIRE AND TEST OPERATION OF DUCT SMOKE DETECTORS, REMOTE TEST STATIONS AND NOTIFICATION DEVICES PER MANUFACTURER'S INSTALLATION INSTRUCTIONS.  
INSTALL/WIRE DUCT DETECTORS, REMOTE TEST STATIONS AND NOTIFICATION DEVICES PER MANUFACTURER'S INSTALLATION INSTRUCTIONS.

**3 DUCT DETECTOR MOUNTING DETAIL**  
DIAGRAMMATIC ONLY



- GENERAL NOTES:**
- ALL CONDUCTOR SIZES BASED ON COPPER, 75° C LUGS.
  - PROVIDE COMPLETE GROUNDING ELECTRODE SYSTEM. PROVIDE GROUNDING ELECTRODE CONDUCTOR AT SERVICE ENTRANCE OVER CURRENT PROTECTION DEVICE AND BOND TO COLD WATER PIPING, METAL FRAME OF BUILDING, AND TO (3) 3/4"x10'-0" COPPER GROUND RODS.
  - COORDINATE INSTALLATION OF BONDING PROVISIONS FOR CONCRETE-ENCASED ELECTRODE AT THE FOOTINGS ARE INSTALLED FOR INSPECTION BY ELECTRICAL INSPECTOR. THERE SHALL BE NO SPLICES IN THE GROUNDING ELECTRODE CONDUCTOR.
  - ELECTRICAL CONTRACTOR SHALL PROVIDE METER BASE AND CT CABINET PER UTILITY SPECIFICATIONS.
  - FIELD COORDINATE ALL ELECTRICAL SERVICE REQUIREMENTS WITH LOCAL UTILITY COMPANY PRIOR TO PROJECT START UP. ALL WORK MUST CONFORM TO ALL LOCAL UTILITY RULES AND REGULATIONS.
  - PROVIDE BUILDING AUTOMATION SYSTEM. PROVIDE ALL WIRING FOR CONTROLS, INCLUDING FINAL CONNECTIONS. REFER TO DETAILS FOR GENERAL DEVICE WIRING AND MOUNTING INFORMATION.
  - PANEL BOARD RATINGS AND FEEDERS SHOWN ARE BASED ON WORST CASE HVAC EQUIPMENT. VERIFY PANEL BOARD SIZES, FEEDER SIZES, AND CIRCUIT BREAKERS WITH HVAC SYSTEM TYPE, CLIMATE ZONE, AND HVAC EQUIPMENT MANUFACTURER FOR ACTUAL SYSTEM INSTALLED. MODIFY CIRCUIT BREAKERS AND FEEDER AND BRANCH CIRCUITS AS REQUIRED FOR SPECIFIC LOCATION.
  - ONLY U.L. LISTED EQUIPMENT SHALL BE USED.
  - ALL DEVICES ARE 3 POLE U.N.O.
  - ALL NEW COMPONENTS SHOWN ON THE RISER DIAGRAM SHALL BE "FULLY RATED" AND ADEQUATE FOR THE MAXIMUM FAULT CURRENT AVAILABLE AT THE POINT OF APPLICATION.

**2 POWER RISER DIAGRAM**  
N.T.S.



**1 POWER PLAN**  
1/8" = 1'-0"

**pb2**  
architecture  
+ engineering  
100A Avenue Suite 100  
Greenville, SC 29615  
Phone: 479.636.3545  
Fax: 479.636.1209  
Engineer of Record  
Keith A. Williams, P.E.  
South Carolina License No. 25844  
CCA Number: 4672

**STIPULATION FOR REUSE:**  
THIS DRAWING WAS PREPARED FOR THE PROJECT AND SITE SPECIFICALLY IDENTIFIED. IT IS NOT TO BE REUSED FOR ANY OTHER PROJECT WITHOUT THE WRITTEN PERMISSION OF THE ARCHITECT. ANY REUSE OF THIS DRAWING FOR ANY OTHER PROJECT WITHOUT THE WRITTEN PERMISSION OF THE ARCHITECT IS A VIOLATION OF THE ARCHITECT'S PROFESSIONAL ETHICS AND MAY BE CONSIDERED AS A VIOLATION OF THE LAW.

**FAMILY DOLLAR STORE**  
1145 WHITE HORSE RD.  
GREENVILLE, SOUTH CAROLINA  
JOB NUMBER: 2017.0123

**ISSUE BLOCK**


CHECKED BY: HS  
DRAWN BY: WQ  
PROTO CYCLE: 2016-01  
DOCUMENT DATE: 06.22.17

STATE OF SOUTH CAROLINA  
P&B Architecture & Engineering, PLLC  
100115  
REGISTERED ARCHITECT

STATE OF SOUTH CAROLINA  
Professional Seal  
No. 23844  
KEITH A. WILLIAMS  
P.E.  
6/22/17

**POWER PLAN**  
SHEET: E2.0

PRINTED: 6/22/2017 5:25 PM BY: Travis Spikes LAST SAVED: 6/20/2017 8:43 AM BY: Westoncaulis  
c:\family\_dollar\2017.0123\_greenville.sc - white horse - durban\drawings\mep\elec\sheets\p020.dwg