

EQUIVALENT NOMINAL PIPE SIZES

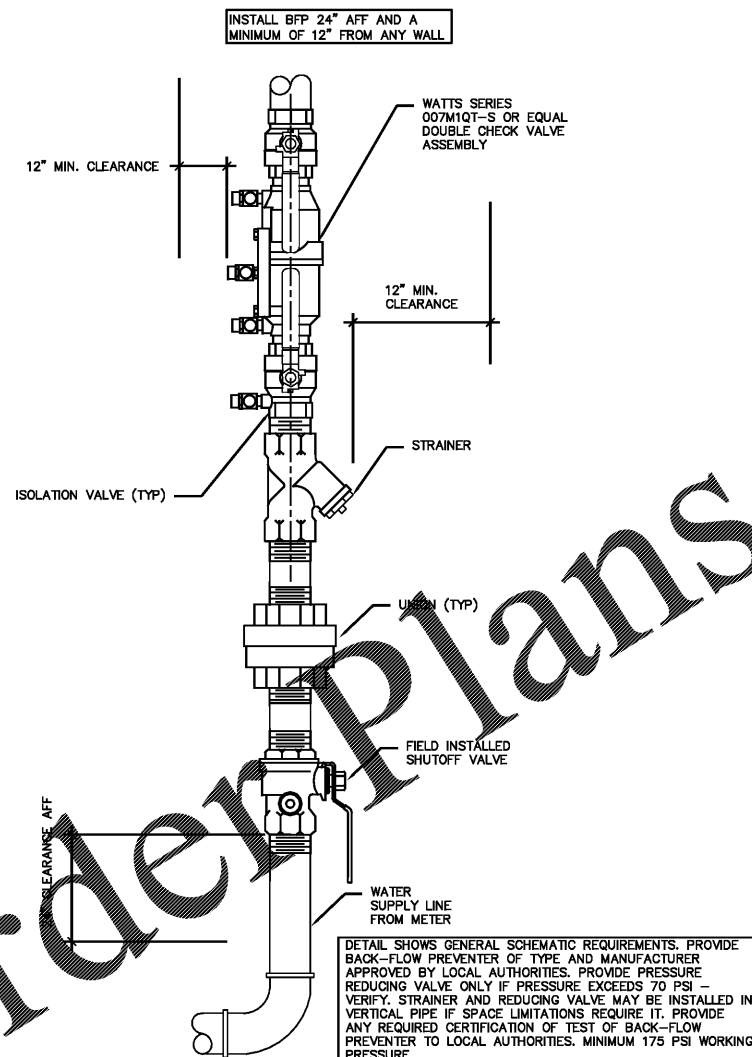
PLAN SIZE (COPPER)	PEX
1/2"	1/2"
3/4"	1"
1"	1 1/4"
1 1/4"	1 1/2"
1 1/2"	2"
2"	NA
2 1/2"	NA
3"	NA
4"	NA

NOTE: REFER TO SPECIFICATIONS FOR APPROVED MANUFACTURERS.

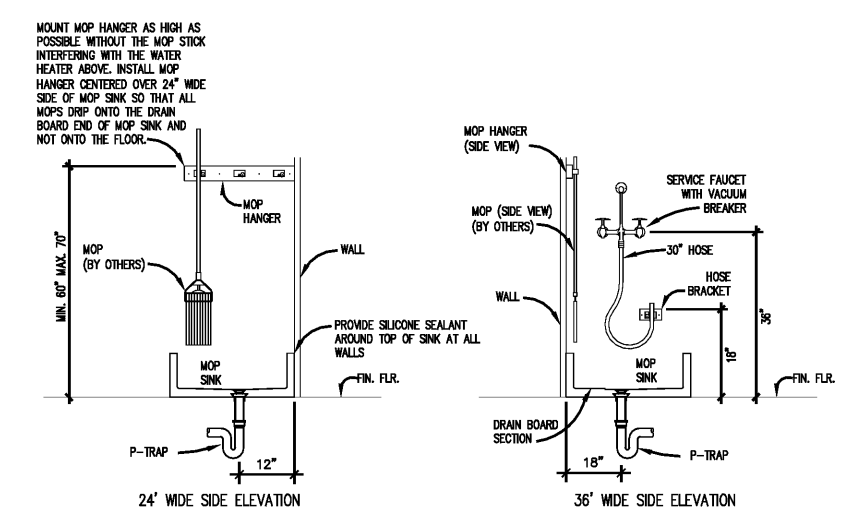
PLUMBING FIXTURE SCHEDULE

MARK	FIXTURE	C.W.	H.W.	WASTE	TRAP	VENT	DESCRIPTION
P1	A.D.A. WATER CLOSET	1/2"	-	3"	-	2"	ZURN Z5561 FLUSH TANK PRESSURE ASSIST HIGH EFFICIENCY 1.0 GPF. WHITE, ELONGATED OPEN FRONT SEAT WITHOUT PLASTIC COVER Z5955SS-EL-ST5 AND ZURN Z5972-COMB TOILET KIT. NEW A.D.A. WATER CLOSET WITH COLD WATER TAP WITH SHUT-OFF VALVE. FLOOR MOUNTED VITREOUS CHINA. SIPHON-ACTION-JET. MOUNT FLUSH LEVER OPPOSITE OF WALL. SUPPLIES AND STOPS: ZURN Z8804-XL-CR-PC. PROVIDE CAULKING AROUND BASE.
P2	A.D.A. LAVATORY	1/2"	1/2"	2"	1-1/2"	1-1/2"	ZURN Z5344 "WHITE" WALL MOUNT, WITH ZURN Z86500-XL METERING CENTERSET FAUCET NO LIFT ROD HOLE. WALL MOUNTED VITREOUS CHINA. FRONT OVERLAY SELF RIMMING, FURNISH WITH ZURN Z8747-PC 6" DRAIN AND OFFSET TAILPIECE, VANDAL-RESISTANT AERATOR, CENTERSET FAUCET WITH FACTORY SET FOR A MAXIMUM OF 0.25 GALLON PER MINUTE ACTIVATION, ZURN Z1021WL-PC TRAP PRIMER WITH TRAP ARM AND ZURN Z86500-INT ADA PROTECTOR COMBINATION KIT, ZURN Z8804-XL-LR-PC SUPPLIES AND STOPS. PROVIDE CAULKING AROUND LAVATORY.
P3	MOP SINK	3/4"	3/4"	3"	3"	2"	ZURN Z1996-36 FLOOR MOUNT, ZURN Z843M1-RC FAUCET WITH VACUUM BREAKER, MOLDED HIGH DENSITY COMPOSITE, MODEL #FP1996 HOSE, HOSE BRACKET AND MOP BRACKET. PROVIDE CAULK AROUND MOP SINK.
P4	A.D.A. ELECTRIC WATER COOLER	1/2"	-	2"	1-1/2"	1-1/2"	OASIS MODEL # P-100L NON-REFRIGERATED, STAINLESS STEEL, WALL MOUNTED, DOUBLE STATION, FINISH W/ WASTE DRAIN WITH TRAP, SUPPLY, STOP AND WALL HANGER PROVIDED WITH 035174-001 APRON. EXACT COLOR AND FINISH TO BE SELECTED BY ARCHITECT. SUPPLIES AND STOPS: ZURN X8804-XL-LR.
WH1	WATER HEATER	3/4"	3/4"	-	-	-	ELECTRIC WATER HEATER BRADFORD WHITE MODEL RE110U6 LOW-BOY WATER HEATER, GAS LINED, 10 GALLON TANK, 1500 WATT ELEMENT, MINIMUM 6 YEAR WARRANTY, 120V/1PH/60HZ, 10 GPH RECOVERY AT 60 DEG. TEMPERATURE RISE. FURNISH WITH ZURN VACUUM RELIEF VALVE ON COLD WATER RISER. PROVIDE SAFETY DRAIN PAN AND DRAIN LINE. FURNISH WITH HEAT TRAPS ON INLET AND OUTLET. PROVIDE EXPANSION TANK, 2.1 GALLON CAPACITY, WATTS MODEL PLT-5. MOUNT WATER HEATER ABOVE MOP SINK WITH 6'-8" CLEAR TO BOTTOM OF WATER HEATER SUPPORT PLATFORM.
FPWH	FREEZE PROOF WALL HYDRANT	3/4"	-	-	-	-	WOODFORD B65 NON-FREEZE TYPE WITH 3/4" H.P.T. OUTLET, PROVIDE RECESSED BOX TYPE WITH AUTOMATIC DRAINING ANTI-SIPHON VACUUM BREAKER, LENGTH TO SUIT WALL THICKNESS MOUNTED 30" ABOVE GRADE.
WCO	WALL CLEAN OUT	-	-	4"/3"	4"/3"	-	WALL CLEAN OUTS SHALL BE EQUAL TO ZURN MODEL Z-1446 WALL CLEAN OUT WITH CAST IRON BODY, ABS PLUG AND STAINLESS STEEL ACCESS COVER WITH SECURING SCREW. CLEAN OUT SIZE SHALL MATCH LINE SIZE.
FCO	FLOOR CLEAN OUT	-	-	4"	4"	-	FLOOR CLEAN OUTS SHALL BE ZURN MODEL Z-1454 CAST IRON ADJUSTABLE FLOOR CLEAN OUT, CLEAN OUT SIZE SHALL MATCH LINE SIZE. PROVIDE ACCESSORIES SUCH AS CARPET MARKER OR TILE RECESS AS REQUIRED TO MATCH FLOOR FINISH.
TMV	THERMOSTATIC MIXING VALVE	1/2"	1/2"	-	-	-	SYMMONS MODEL 7-225-CK-F WITH A MINIMUM FLOW OF 0.5 GPM AND 2 GPM AT 10 PSI PRESSURE DIFFERENTIAL. TEMPERING VALVE MUST CONFORM TO ASSE 1070 AND BE SET AT 110 DEGREES FAHRENHEIT.
YCO	YARD CLEAN OUT	-	-	4"	4"	-	EXTERIOR CLEAN OUTS SHALL BE EQUAL TO J.R. SMITH MODEL 4240 ADJUSTABLE FLOOR CLEAN OUT WITH CAST IRON BODY AND TOP. CLEAN OUT SIZE SHALL MATCH LINE SIZE. PROVIDE WITH 24"x24"x8" THICK CONCRETE PAD AT GRADE.
FD	FLOOR DRAIN	-	-	3"	3"	2"	ZURN MODEL Z415N-NH-P CAST IRON BODY WITH FLASHING COLLAR, TRAP PRIMER CONNECTION AND ADJUSTABLE NICKEL BRONZE STRAINER HEAD AND NIKALOY SQUARE TOP.

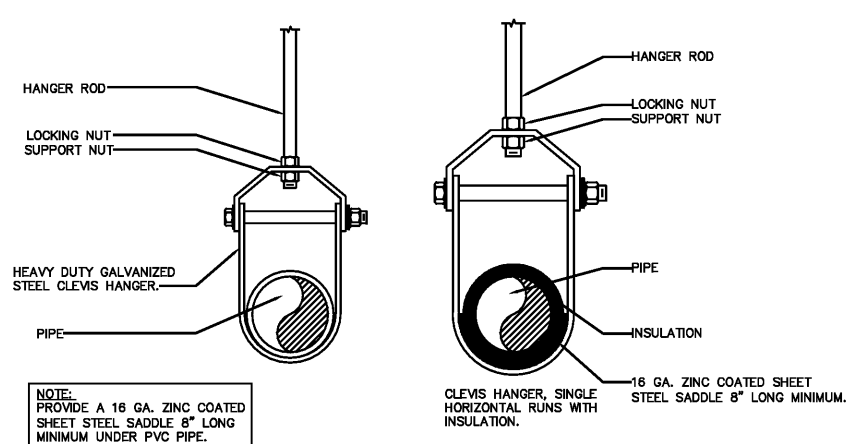
NOTES:  
 1. NO SUBSTITUTIONS ALLOWED.  
 2. PROVIDE CAULK AROUND MOP SINK, WATER CLOSETS, AND LAVATORIES.  
 3. PLUMBING FIXTURES P-1, P-2, P-3, P-4, WH-1, TMV AND ASSOCIATED ACCESSORIES ARE BEING FURNISHED BY GC AS PART OF THE "BATH-IN-A-BOX". FIXTURES SHALL BE INSTALLED BY PC.  
 4. PLUMBING FIXTURES WCO, FCO, YCO, FD AND FPWH SHALL BE FURNISHED AND INSTALLED BY PC.



3 VERTICAL DOUBLE CHECK BACKFLOW PREVENTER NTS



2 MOP SINK DETAIL NTS



1 PIPE SUPPORT DETAIL NTS

**pb2**  
 architecture  
 +engineering  
 100  
 22758  
 479.636.3545  
 479.636.1209  
 Engineer of Record  
 Joshua D. McColl, P.E.  
 South Carolina License No. 33036  
 COA Number: 4672

STIPULATION FOR REUSE  
 THIS DRAWING WAS PREPARED FOR A SPECIFIC PROJECT AND IS NOT TO BE REUSED FOR ANY OTHER PROJECT WITHOUT THE WRITTEN CONSENT OF THE ARCHITECT. ANY REUSE OF THIS DRAWING FOR ANY OTHER PROJECT WITHOUT THE WRITTEN CONSENT OF THE ARCHITECT IS UNLAWFUL AND MAY BE SUBJECT TO LEGAL ACTION.

**FAMILY DOLLAR STORE**  
 1145 WHITE HORSE RD.  
 GREENVILLE, SOUTH CAROLINA  
 JOB NUMBER: 2017.0123

ISSUE BLOCK

NO.	DATE	DESCRIPTION

CHECKED BY: TES  
 DRAWN BY: BEH  
 PROTO CYCLE: 2016-01  
 DOCUMENT DATE: 06.22.17

STATE OF SOUTH CAROLINA  
 PB2 Architecture + Engineering, PLLC  
 100115  
 REGISTERED ARCHITECT  
 SOUTH CAROLINA PROFESSIONAL ENGINEER  
 No. 33036  
 JOSHUA D. MCCOLL  
 6/22/17

PLUMBING DETAILS AND SCHEDULES  
 SHEET: P2.1

PRINTED: 6/22/2017 5:19 PM BY: Travis Spikes LAST SAVED: 6/20/2017 11:01 AM BY: Brandon Hampton  
 c:\family\_dollar\2017.0123\_greenville.sc - white horse - durban\drawings\mep\_plumb\sheets\p021.dwg

OrderPlans