

PRINTED: 6/22/2017 5:12 PM BY: Travis Spikes LAST SAVED: 6/22/2017 5:07 PM BY: Trovian Spikes  
 c:\family\_dollar\2017\_0123\_greenville.sc - white horse - durban\drawings\arch\_sheets\0060.dwg

Order Plans

### Corner Guard Stainless

With Cleanfit Installation

**Features:**

- Key pin fits up to 1/4" in other direction for storage & easy removal
- Back to back for quick, on-site adjustments
- Intergrated handle for easy carrying & no padding
- Install quickly and correctly with our patented storage anchor system - eliminates messy adhesives

**Standard Sizes:**

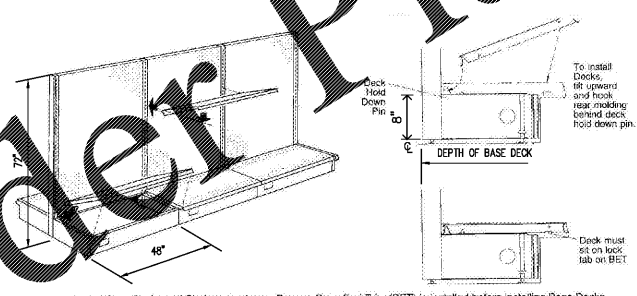
- 8" Height: GA-10-SS
- 12" Height: GA-12-SS
- 18" Height: GA-18-SS
- 24" Height: GA-24-SS

AS sizes include 2 storage anchor pins and a back-to-back for easy on-site adjustments.

Patent numbers: 7,582,790; 7,502,051; 9,260,337

PROVIDE GARD-24-SS FLOOR GUARDS BY MCCUE (OR APPROV FDS EQUAL) BELOW SCANNER BOXES AND FIRE EXTINGUISHERS THAT PROTRUDE MORE THAN 4" BEYOND COLUMN OR WALL FACE. NOT ALL STORES WILL HAVE SCANNER BOXES OR F.E.s THAT PROTRUDE BEYOND 4". CONSULT WITH LOCAL OFFICIALS IN DETERMINING IF SCANNER BOXES ARE REQUIRED & WHAT F.E. SIZE IS REQUIRED. MOUNT FLOOR GUARD PER MANUFACTURERS REQUIREMENTS.

3 BUMPER GUARD  
NTS



2 GONDOLA SHELVING DETAIL  
NTS

CASH WRAP NOTE

1. GC TO ASSEMBLE AND INSTALL THE FAMILY DOLLAR SUPPLIED CASH WRAP USING THE LATEST ASSEMBLY INSTRUCTIONS PROVIDED BY FAMILY DOLLAR. REFER TO ELECTRICAL DRAWINGS FOR WIRING INFORMATION. THE POWER DISTRIBUTION SYSTEM WILL BE DELIVERED WITH THE CASH WRAPS. THE GC WILL INSTALL THE NEW POWER DISTRIBUTION. THE GC WILL INSTALL PANACHE STRIPS PROVIDED BY FAMILY DOLLAR FROM THE STORE TO THE CASH WRAP AND BEHIND THE COOLERS FOR RISK CLASS 3 AND 4 STORES.

LOW VOLTAGE / SECURITY SYSTEMS NOTES

- GC TO HIRE AND SUPERVISE THE INSTALLATION OF THE LOW VOLTAGE WIRING USING FAMILY DOLLAR'S CLOSED SPEC VENDOR.
- GC WILL COORDINATE LANSING UP TO 3 PHONE LINES TO THE D-M...
- GC WILL HIRE AND SUPERVISE THE INSTALLATION OF THE COOLER/FREEZERS USING FAMILY DOLLAR'S CLOSED SPEC VENDORS.
- GC WILL BE POINT OF CONTACT FOR INSTALLATION OF LOW VOLTAGE WIRING.
- GC WILL MAKE AVAILABLE INTERIOR LIFTS FOR THE INSTALLATION OF THE LOW VOLTAGE WIRING.
- GC WILL HAND OVER THE STORE TO FAMILY DOLLAR WITH A CO. IF FIXTURE MERCHANDISE INSPECTIONS ARE REQUIRED, A TOU WILL BE ACCEPTABLE AT POSSESSION.
- GC WILL CONTACT FAMILY DOLLAR FOR THE LATEST CONSTRUCTION ADVISORY REQUIREMENTS AND INCLUDE THEM AS PART OF HIS CONTRACT FOR THIS PROJECT.

**pb2**  
architecture  
+ engineering

Alex Avenue Suite 100  
Greenville, SC 29615  
Tel: 479.636.3545  
Fax: 479.636.1209

Architect of Record  
William Douglas Hurley  
South Carolina License No. 4704  
Firm SC License Number: 100115

STIPULATION FOR REUSE  
THIS DRAWING WAS PREPARED FOR THE PROJECT AND IS NOT TO BE REUSED FOR ANY OTHER PROJECT WITHOUT THE WRITTEN PERMISSION OF THE ARCHITECT. ANY REUSE OF THIS DRAWING FOR ANY OTHER PROJECT WITHOUT THE WRITTEN PERMISSION OF THE ARCHITECT IS NOT AUTHORIZED AND MAY BE CONSIDERED AS A VIOLATION OF THE ARCHITECT'S PROFESSIONAL ETHICS.

**FAMILY DOLLAR STORE**  
1145 WHITE HORSE RD.  
GREENVILLE, SOUTH CAROLINA

JOB NUMBER: 2017.0123

ISSUE BLOCK


CHECKED BY: JMJ  
 DRAWN BY: JMJ  
 PROTO CYCLE: 2016-01  
 DOCUMENT DATE: 06.22.17

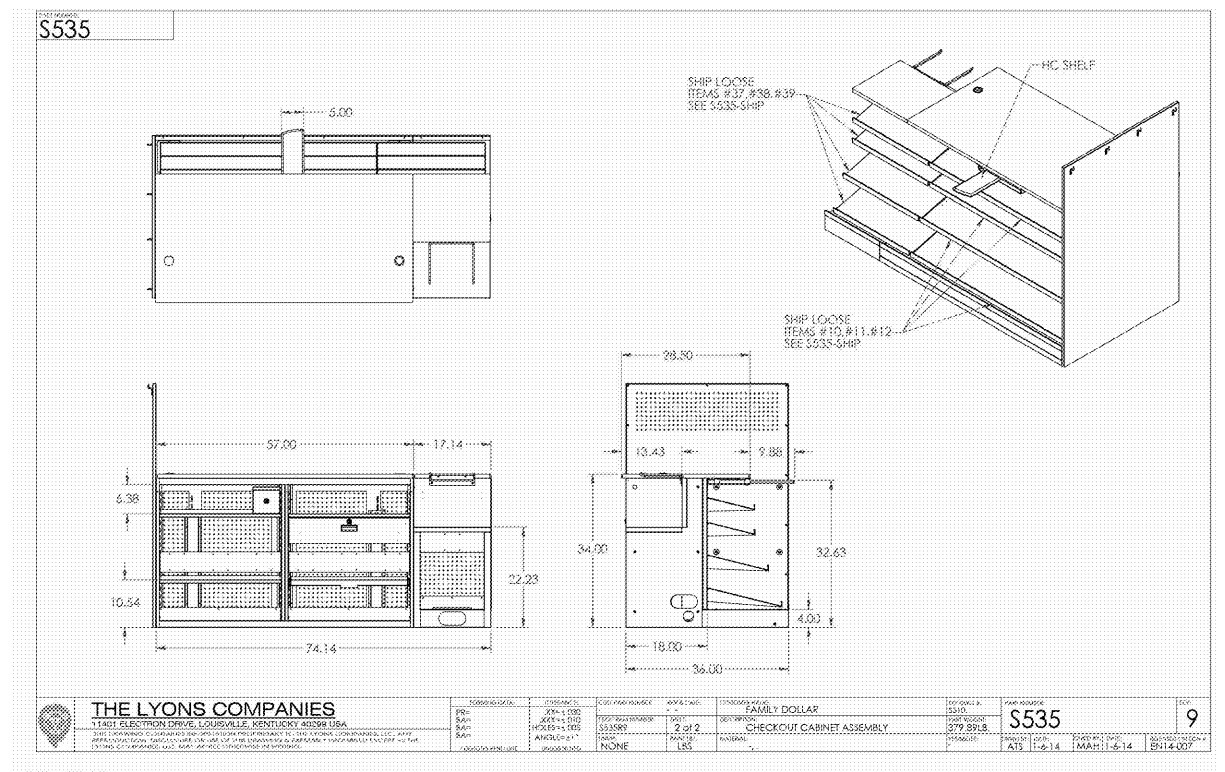
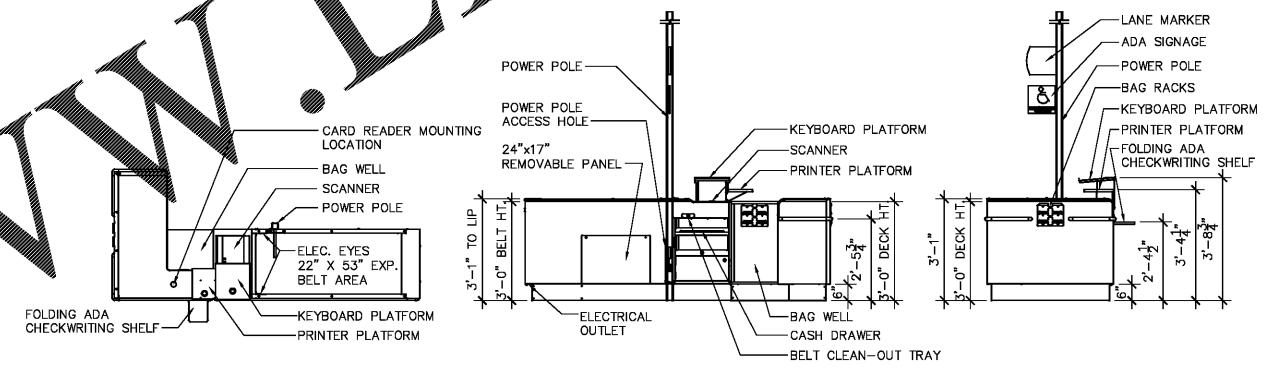


NOTES AND DETAILS

SHEET: A6

@

WWW.LDILine.com



1 CHECK OUT (CASH WRAP)-PLAN  
N.T.S.