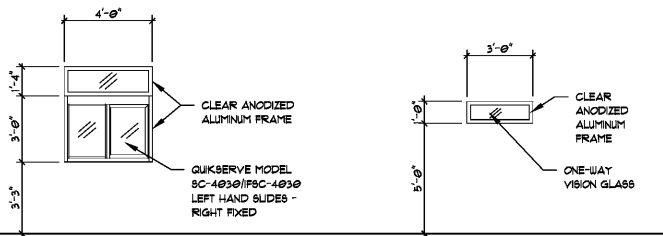


1 RESTROOM PLANS
A3.1 SCALE: 1/4"=1'-0"



4 WINDOW ELEVATIONS
A3.1 SCALE: 1/4"=1'-0"

DOOR NO.	DOOR SIZE	FRAME	DOOR	DETAILS	FIRE RATING	HARDWARE	REMARKS
101	3'-0" T-0"	1 3/4" HM	FI	HM A		EP, G, H, L, M	
101	3'-0" T-0"	1 3/4" HM	FI	A WD			
104	3'-6" 6'-8"	NA	INSUL	HM			FURNISHED BY COOLER SUPPLIER
104	3'-0" 6'-8"	7" HM	FI	WD D			W/ A, E, H, O, U
107	3'-6" 6'-8"	1 3/4" INSUL		INSUL			FURNISHED BY COOLER SUPPLIER
108	3'-0" 6'-8"	1 3/4" INSUL		INSUL			FURNISHED BY COOLER SUPPLIER
109	3'-0" 6'-8"	1 3/4" INSUL		INSUL			FURNISHED BY COOLER SUPPLIER

HARDWARE	NOTES
A. 2 PAIR BUTT HINGES X NRP (STAINLESS STEEL WITH BEARING)	1. ALL DOORS TO HAVE SILENCERS
B. PANG HARDWARE - PUSH BAR DEVICE, VON DREFIN 1122E 899NL 899NL X 3610 X 260	2. DOORS TO BE KEYPED BY OWNER
C. LEVER HANDLE LOCKSET (PRIVACY) SCHLAGE 6095 X ATHENS 626	3. DOOR FRAMES TO HAVE (B) ATTACHMENT CLIPS ON EACH SIDE AND (C) CLIPS AT THE TOP FOR CONNECTION TO WALLS
D. LEVER HANDLE LOCKSET (PASSAGE) SCHLAGE 6095 X ATHENS 626	4. ALL ALUMINUM DOORS, FRAMES, AND STOREFRONT TO BE CLEAR ANODIZED TO MATCH QUIKSERVE WINDOW
E. LEVER HANDLE LOCKSET (ENTRY) SET, SCHLAGE 6095 X ATHENS 626	5. ALL LOCKS AND LATCHES TO MEET REQUIREMENTS OF BUILDING CODE CHAPTER 10-VOLUME 1 FOR EGRESS DOORS
F. HEAVY DUTY DOOR CLOSER - SURFACE MOUNTED INSIDE MODEL #8616 FC AND X 148	
G. ALUMINUM THRESHOLD (LATCH SIDE TO RECESS DOOR TILE)	
H. DOOR STRIPP KIT "FEET" MODEL #2099MG	
I. LEVER STRIPP AND DOOR STOP	
J. FULL MOULD	
K. PUSH BAR	
L. STAINLESS STEEL KICK PLATE (ON BOTH SIDES - 34" X 10" HIGH)	
M. CONTINUOUS RING, ABS MODEL #AZ69D83 X ALUM	
N. HEAVY DUTY DOOR CLOSER - TO MATCH STOREFRONT	
O. CYLINDRICAL LOCKSET - KEYPED OUTSIDE, THUMB TURN INSIDE	
P. RESTROOM SANITARY DOOR OPENER-ARM	
Q. RESTROOM SANITARY DOOR OPENER-TOE	
R. OVERHEAD DOOR, 12"x12", ALUM. FINISH TO MATCH ALUM. STOREFRONT	
T. 11 PAIR BUTT HINGES X NRP (STAINLESS STEEL WITH BEARINGS)	
U. LATCH-PLATE (KAMPER RESISTANT)	

ACCESSORY SCHEDULE		
A	47" HORIZONTAL GRAB BAR	BOBRICK OR EQUAL
B	36" HORIZONTAL GRAB BAR	BOBRICK OR EQUAL
C	18" VERTICAL GRAB BAR	BOBRICK OR EQUAL
D	TOILET PAPER DISPENSER	OWNER-SELECTED
E	NAPKIN DISPOSAL	OWNER-SELECTED
F	PAPER TOWEL DISPENSER	OWNER-SELECTED
G	SOAP DISPENSER	OWNER-SELECTED
H	MIRROR	OWNER-SELECTED
J	XLERATOR MODEL #XL-SU COLOR	OWNER-SELECTED
K	XLERATOR ADA COMPLIANT RECESS KIT	PART NO. 48902
L	MENS HANDICAP SIGN BFM68BLACK	ROCKWOOD
M	WOMENS HANDICAP SIGN BFM68BLACK	ROCKWOOD
N	UNISEX HANDICAP SIGN BFM68BLACK	ROCKWOOD

PROVIDE BLOCKING AS REQUIRED.
SEE SHEET A01 FOR MOUNTING HEIGHTS.

SOLID PLASTIC RESTROOM PARTITIONS & DOOR BY ROCKVILLE - FLOOR MOUNTED, OVERHEAD BRACED, COLOR: CAYENNE RED.

2 DOOR ELEVATIONS
A3.1 SCALE: 1/4"=1'-0"

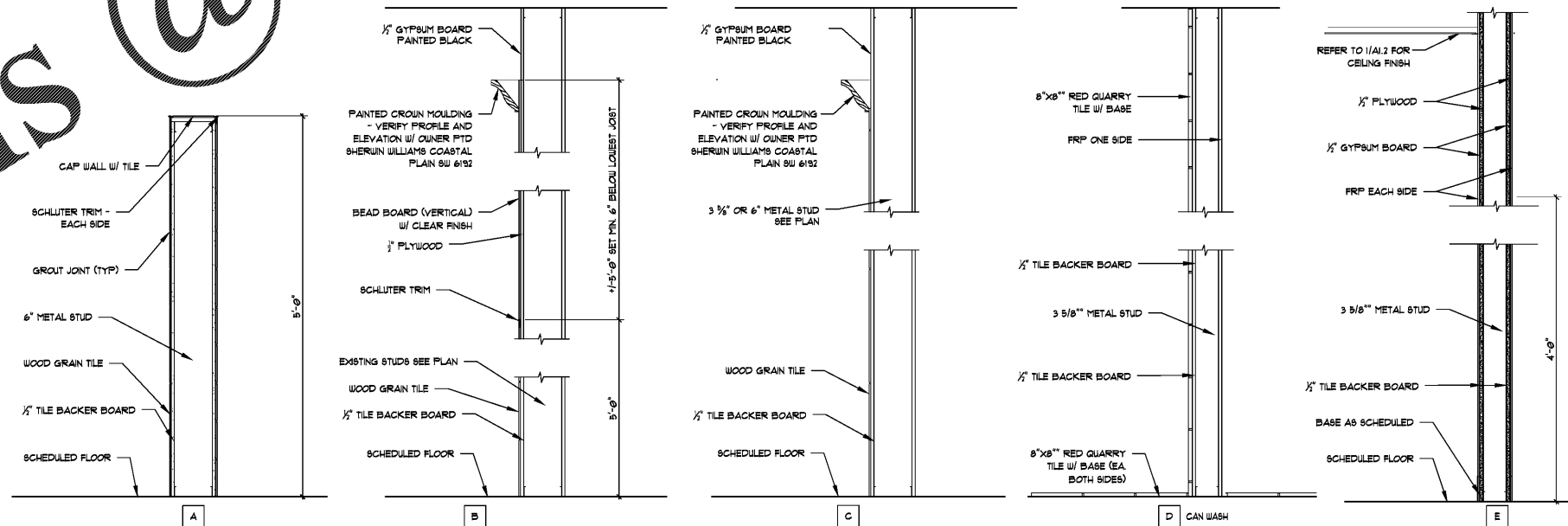
3 FRAME ELEVATION
A3.1 SCALE: 1/4"=1'-0"

ROOM NO.	ROOM NAME	FLOOR	BASE	WALLS				CEILING	CEILING FINISH	REMARKS	ROOM NO.
				NORTH	SOUTH	EAST	WEST				
101	DINING	FIELD TILE-1	FIELD TILE-1	4'-0" FIELD TILE-1/LOG VENEER ABOVE	4'-0" FIELD TILE-1/LOG VENEER ABOVE	4'-0" FIELD TILE-1/LOG VENEER ABOVE	4'-0" FIELD TILE-1/LOG VENEER ABOVE	2X2 ACT - REGULAR	EXST.	FLOOR TILE TO RUN DIAGONALLY	101
102	SERVICE AREA	QUARRY TILE-2	QUARRY TILE-2	FRP	FRP	FRP	FRP	2X4 VINYL ROCK	9'-2"		102
103	KITCHEN	QUARRY TILE-2	QUARRY TILE-2	FRP	FRP	FRP	FRP	2X4 VINYL ROCK	9'-2"		103
104	VEST.	QUARRY TILE-2	QUARRY TILE-2	FRP	FRP	FRP	FRP	EPOXY PAINTED GWB	5'-0"		104
105	UNISEX TOILET	QUARRY TILE-2	QUARRY TILE-2	FRP	FRP	FRP	FRP	2X4 VINYL ROCK	5'-0"		105
106	CAN WASH	QUARRY TILE-3	QUARRY TILE-3	5'-0" QUARRY TILE-3/ FRP ABOVE	5'-0" QUARRY TILE-3/ FRP ABOVE	5'-0" QUARRY TILE-3/ FRP ABOVE	5'-0" QUARRY TILE-3/ FRP ABOVE				106
107	DRY STORAGE	QUARRY TILE-2	QUARRY TILE-2	FRP	FRP	FRP	FRP	2X4 VINYL ROCK	9'-2"		107
108	COOLER	QUARRY TILE-2	QUARRY TILE-2	COOLER PANEL	COOLER PANEL	COOLER PANEL	COOLER PANEL	COOLER PANEL		INSUL CONC. SLAB	108
109	FREEZER	QUARRY TILE-2	QUARRY TILE-2	FREEZER PANEL	FREEZER PANEL	FREEZER PANEL	FREEZER PANEL	FREEZER PANEL		INSUL CONC. SLAB	109
110	MEN	FIELD TILE-1	FIELD TILE-1	FIELD TILE-1	FIELD TILE-1	FIELD TILE-1	FIELD TILE-1	EPOXY PAINTED GWB	5'-0"	FLOOR TILE TO RUN DIAGONALLY	110
111	WOMEN	FIELD TILE-1	FIELD TILE-1	FIELD TILE-1	FIELD TILE-1	FIELD TILE-1	FIELD TILE-1	EPOXY PAINTED GWB	5'-0"	FLOOR TILE TO RUN DIAGONALLY	111
112	HALL	FIELD TILE-1	FIELD TILE-1	4'-0" FIELD TILE-1/LOG VENEER ABOVE	4'-0" FIELD TILE-1/LOG VENEER ABOVE	4'-0" FIELD TILE-1/LOG VENEER ABOVE	4'-0" FIELD TILE-1/LOG VENEER ABOVE	2X2 ACT - REGULAR	EXST.	FLOOR TILE TO RUN DIAGONALLY	112

QUARRY TILE:
1. 12"x12" TERRA ANTICA TILE AND BASE
2. 6"x6" RED ABRASIVE QUARRY TILE WITH COVE BASE, EPOXY GROUT IN ALL KITCHEN AREAS
3. 6"x6" RED QUARRY TILE WITH COVE BASE

NOTES:
1. ALL INTERIOR WALL AND CEILING FINISHES ARE CLASS B AND MEET THE REQUIREMENTS FOR GROUP A-2 PER TABLE 603.5 (FRP MATERIAL IS KEMTILE FIRE-X GLASSBORO)
2. ALL FLOOR WALL SURFACES INCLUDING TILE ARE TO BE SLIP-RESISTANT TO COMPLY WITH 2009 VBC SECTION 0903.4
3. 1" TYPE X GYPSUM BOARD COVERED WITH A LAYER OF 20 GAUGE STAINLESS STEEL TO BE INSTALLED ON WALL BEHIND THE HOOD, EXTENDING 18" BEYOND THE EDGE OF THE HOOD ON EACH SIDE AND RUNNING VERTICALLY FROM THE BOTTOM EDGE OF THE HOOD DOWN TO THE TOP OF THE FLOOR TILE COVE BASE (EXTERIOR SHEATHING WITHIN 18" OF HOOD MUST BE NON-COMBUSTIBLE)
4. CEILING IN MEN'S & WOMEN'S TOILET ROOMS SHALL BE PAINTED / SEALED WITH EPOXY PAINT.
5. DINING ROOM CEILING SHALL BE 2X2 BLACK REGULAR ACOUSTICAL TILES IN A WHITE LAY-IN GRID.

INTERIOR STONE:
BORAL PRO-FIT LEDGESTONE - COLOR: AUTUMN



5 WALL PARTITION TYPES
A3.1 SCALE: 1"=1'-0"

INDYSEY ARCHITECTURE
S. Elm Street, Suite 300
Greensboro, NC 27401
P. 336.617.4402
F. 336.617.4434
www.indyseychitecture.com



COOK OUT
975 W. Poplar Ave.
Collierville, TN

NO.	DATE	DESCRIPTION

DOOR SCHEDULE AND DETAILS

DATE: 07-28-2017
DRAWN BY: AAU
CHECK BY: RML
JOB NO.: 17-019-000
SHEET: A3.1