



07/28/2017

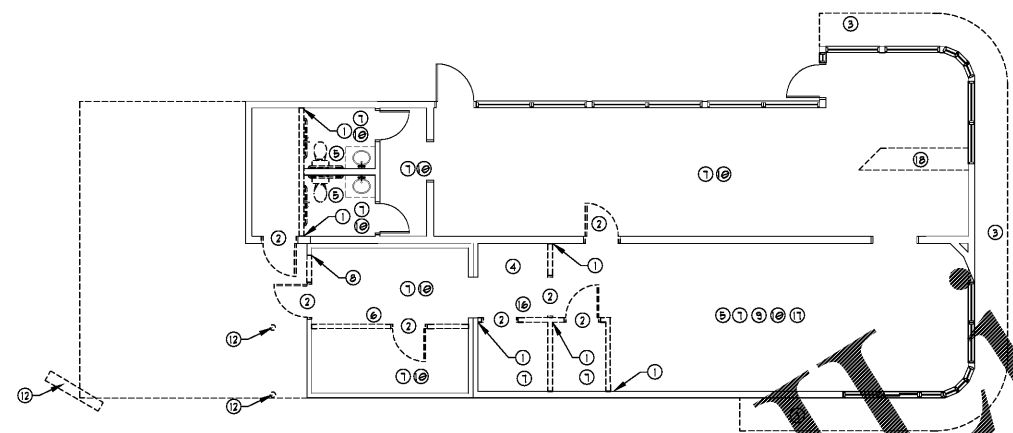
COOK OUT
975 W. Poplar Ave.
Collierville, TN

NO.	DATE	DESCRIPTION

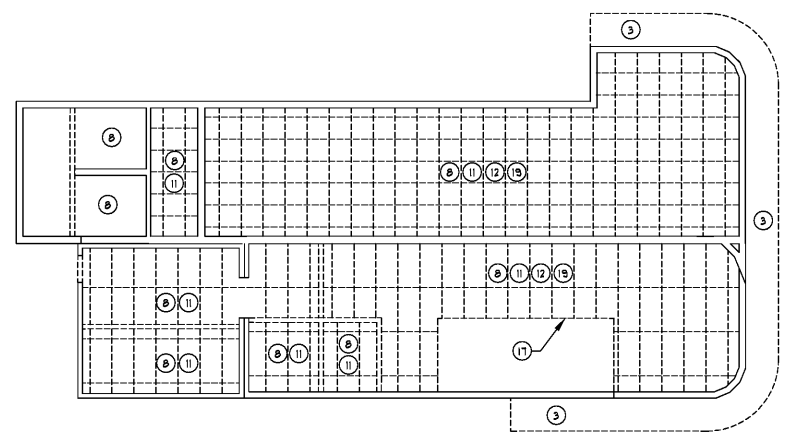
**DEMO FLOOR AND
CEILING PLANS**

DATE: 07-28-2017
DRAWN BY: AAU
CHECK BY: RML
JOB NO.: 17-019-000
SHEET:

AD1.1



1 DEMO FLOOR PLAN
SCALE: 1/8"=1'-0"



2 DEMO CEILING PLAN
SCALE: 1/8"=1'-0"

- DEMOLITION NOTES**
- 1 REMOVE EXISTING WALL. PATCH ADJACENT WALLS AND FLOOR AS NECESSARY AND PREP FOR NEW FINISHES.
 - 2 REMOVE EXISTING DOOR AND FRAME.
 - 3 REMOVE EXISTING WINDOWS. PATCH AND REPAIR EXISTING WALL PANELS AS REQUIRED FOR NEW PAINT.
 - 4 REMOVE EXISTING MOP SINK.
 - 5 REMOVE EXISTING PLUMBING FIXTURES. CAP AND RECESS ALL ABANDONED PIPING AND CONDUITS BEHIND FINISH PARTITION SURFACES.
 - 6 REMOVE EXISTING COOLER PANELS.
 - 7 REMOVE EXISTING FLOOR FINISHES. PATCH AND PREP FOR NEW FINISHES AS NECESSARY.
 - 8 REMOVE EXISTING HARD CEILING, ACOUSTICAL TILE CEILING, LIGHTS, DIFFUSERS, ETC.
 - 9 REMOVE ALL EXISTING EQUIPMENT / FURNITURE.
 - 10 REMOVE ALL EXISTING WALL FINISHES AND PREP FOR NEW FINISHES PER FINISH SCHEDULE.
 - 11 REMOVE AND REPLACE ALL CEILING INSULATION. NEW INSULATION TO COMPLY WITH 2012 INTERNATIONAL ENERGY CODE.
 - 12 REMOVE EXISTING BOLLARDS, MENU BOARD, SPEAKER PEDESTAL. REMOVE OR RELOCATE ANY OTHER EQUIPMENT IN CONFLICT WITH NEW COOLER/FREEZER BOX PLACEMENT.
 - 13 REMOVE EXISTING DUMPSTER DOORS AS REQUIRED. PREP AREA TO RECEIVE NEW DUMPSTER DOORS.
 - 14 REMOVE EXISTING CONCRETE AND ASPHALT PAVING AS REQUIRED FOR NEW CONCRETE SLAB FOR NEW COOLER/FREEZER PLACEMENT.
 - 15 REMOVE EXISTING BUILDING CANOPY AS REQUIRED.
 - 16 REMOVE EXISTING ELECTRICAL PANELS - SEE ELECTRICAL PLANS.
 - 17 REMOVE EXISTING KITCHEN HOOD.
 - 18 REMOVE EXISTING COUNTER.



Order Plans

@

WWW.LINDSEYARCHITECTURE.COM