

**GENERAL NOTES:**

1. CONNECT ALL EMERGENCY FIXTURES AND EXIT SIGNS AHEAD OF LOCAL SWITCHING.
2. VERIFY MOUNTING HEIGHTS FOR WALL PACKS WITH ARCHITECT/OWNER. FIELD COORDINATE WITH ARCHITECT'S ELEVATION DRAWINGS BEFORE ANY ROUGH-IN.

**KEYED NOTES:** ①

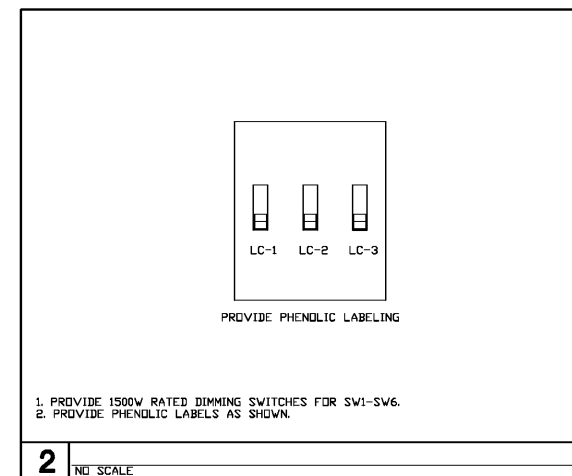
- ① SWITCH BANK SEE DETAIL 2 ON SHEET E4-0. VERIFY WITH OWNER EXACT LOCATION OF SWITCH BANK.

**LIGHTING LEGEND**

MARK	SYMBOL	DESCRIPTION
A		2'X4' LAY-IN LED ACRYLIC LENS, 0.156, INTEGRAL DRIVER, 41.2W
B		2'X4' LAY-IN GRID LED WITH ACRYLIC LENS, 0.125, ELECTRONIC BALLASTS, 34.5W
C NOT USED		4'-0" 1-TUBE SURFACE MOUNTED FLUORESCENT LIGHT WITH WRAP AROUND ACRYLIC LENS, T-8 LAMP, ELECTRONIC BALLASTS, 32W
D		4'-0" SURFACE MOUNT. ENCLOSED DAMP LOCATION LIGHT FIXTURE, LED, INTEGRATED DRIVER, 50W
E		INTERIOR DECORATIVE PENDANT MOUNTED LED LIGHT, 6W LED LAMP
F		RECESSED MOUNTED COMPACT FLUORESCENT CAN LIGHT WITH DAMP LOCATION LENS, 1-LAMP, ELECTRONIC BALLAST, 13W.
G		EMERGENCY/EXIT LIGHT WITH BATTERY BACK-UP (CONNECT AHEAD OF ALL SWITCHING)
H		DECORATIVE EXTERIOR EMERGENCY LIGHT, TWO 6W XENON LAMPS W/HIGH TEMPERATURE NICKEL CADMIUM BATTERY, LITHONIA #AFN-W-GT-TD W/20 MIN. TIME DELAY (CONNECT AHEAD OF ALL SWITCHING)
J		WALL PAK, LED, 1-LAMP 100W MAX
K		EMERGENCY LIGHT WITH BATTERY BACK-UP
L		EXIT LIGHT WITH ARROWS AND NUMBERS OF FACES AS INDICATED ON PLANS. 90 MIN BATTERY BACKUP. SEE LIGHTING FIXTURE SCHEDULE.
M		EXTERIOR WALL SCONCE 72W A19
EF		EXHAUST FAN. SEE EXHAUST FAN SCHEDULE FOR SPECIFICATIONS
CF		52" CEILING FAN W/INCANDESCENT LIGHT KIT, 216W / 72W A19 LAMP
S		SINGLE POLE WALL SWITCH
S <sub>M</sub>		MOTOR RATED SWITCH
S <sub>OC</sub>		WALL MOUNTED OCCUPANCY SENSOR WITH MANUAL OVERRIDE (30 MIN. MAX. OVERRIDE)
LC		LIGHTING CONTACTOR
NL		DENOTES UNSWITCHED NIGHT LIGHT

**① FLOOR PLAN - LIGHTING**

1/8" = 1'-0"



**2** NO SCALE

Order Plans @

WINNEDLINE.COM

**LINDSEY ARCHITECTURE**  
125 S. ...  
Raleigh, NC 27601  
P. 336.877.4402  
F. 336.877.4434  
www.lindseyarchitecture.com

**Optima engineering**  
1659 South Tryon St., Suite 520, Raleigh, NC 27601  
Phone: 704-338-1292 • www.optimaengineering.com  
North Carolina License Number: C-0814



8/04/17

**COOK OUT**  
2546 Chimney Rock Road  
Hendersonville, NC

Mk	Date	Description

**FLOOR PLAN LIGHTING**

Date 08-04-17  
Drawn By LRM  
Check By JG  
Job No. 17-0081-000  
Sheet

**E4-0**

4 OF 6