

HOOD INFORMATION - Job#2555728

HOOD NO.	TAG	MODEL	LENGTH	MAX COOKING TEMP.	TOTAL EXH. CFM	EXHAUST PLENUM RISE(S)	MUA CFM	AC CFM	HOOD CONSTRUCTION	HOOD END TO END	HOOD CONFIG.	
1		5424	15' 0.00"	600 Deg.	3900	10" 34"	3900	-0.704"	3120	660	430 SS Where Exposed	ALONE ALONE

HOOD INFORMATION

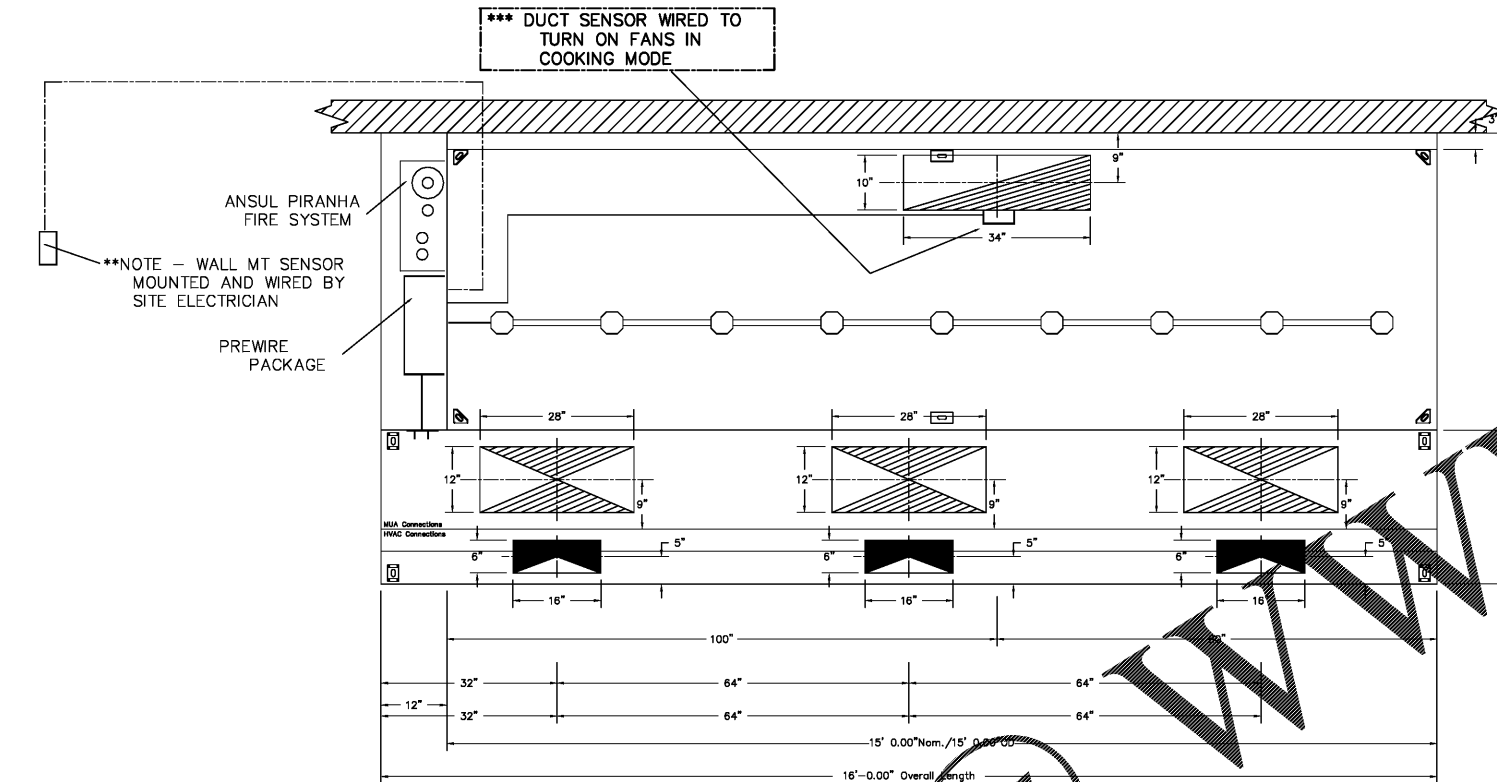
HOOD NO.	TAG	TYPE	QTY	HEIGHT	LENGTH	EFFICIENCY @ 9 MICRONS	QTY.	TYPE	WIRE GUARD	LOCATION	FIRE SYSTEM	SIZE	ELECTRICAL	MODEL #	SWITCHES	QUANTITY	FIRE SYSTEM HANGING PIPING	HOOD WEIGHT
1		SS Baffle with Handles	11	16"	16"	30%	9	L55 Series E26	NO	Left	Ansul Piranha	10	SC-31110FP	1 Light 1 Fan	1	1	YES	885 LBS

HOOD OPTIONS

HOOD NO.	TAG	OPTION
1		FIELD WRAPPER 17.00" High Front, Left, Right BACKSPASH 120.00" High X 240.00" Long 430 SS Vertical RIGHT QUARTER END PANEL 23" Top Width, 0" Bottom Width, 23" High 430 SS LEFT QUARTER END PANEL 23" Top Width, 0" Bottom Width, 23" High 430 SS STRUCTURAL FRONT PANEL

PERFORATED SUPPLY PLENUM(S)

HOOD NO.	TAG	POS.	LENGTH	WIDTH	HEIGHT	TYPE	WIDTH	LENG.	DIA.	CFM	S.P.
1		Front	192"	28"	6"	MUA	12"	28"	1040	0.339"	
						MUA	12"	28"	1040	0.339"	
						AC	6"	16"	220	0.074"	
						AC	6"	16"	220	0.074"	
						AC	6"	16"	220	0.074"	



NOTE TO CONTRACTOR:
PROVIDE ZERO CLEARANCE FIRE WRAP WHERE REQUIRED. REFER TO MECHANICAL GENERAL NOTE #18 ON DRAWING M001 FOR ADDITIONAL REQUIREMENTS.

***** NOTE *****
ALL WALLS THAT COME WITHIN 18" OF HOOD MUST BE METAL STUDS AND SHEETROCK. WOOD STUDS NOT ALLOWED.

CAPTIVE-AIRE HOODS ARE BUILT IN COMPLIANCE WITH

Intertek

NFPA #96
NSF
UL 710 & ULC710 STANDARDS
E.T.L. LISTED 3054804-001

VERIFY CEILING HEIGHT

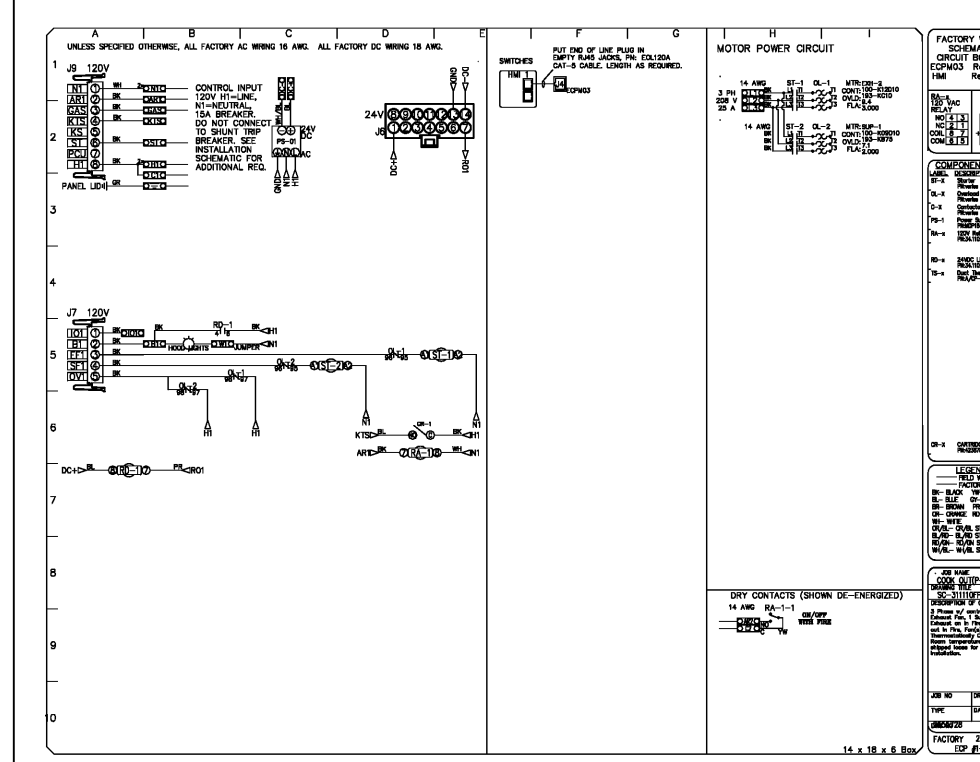
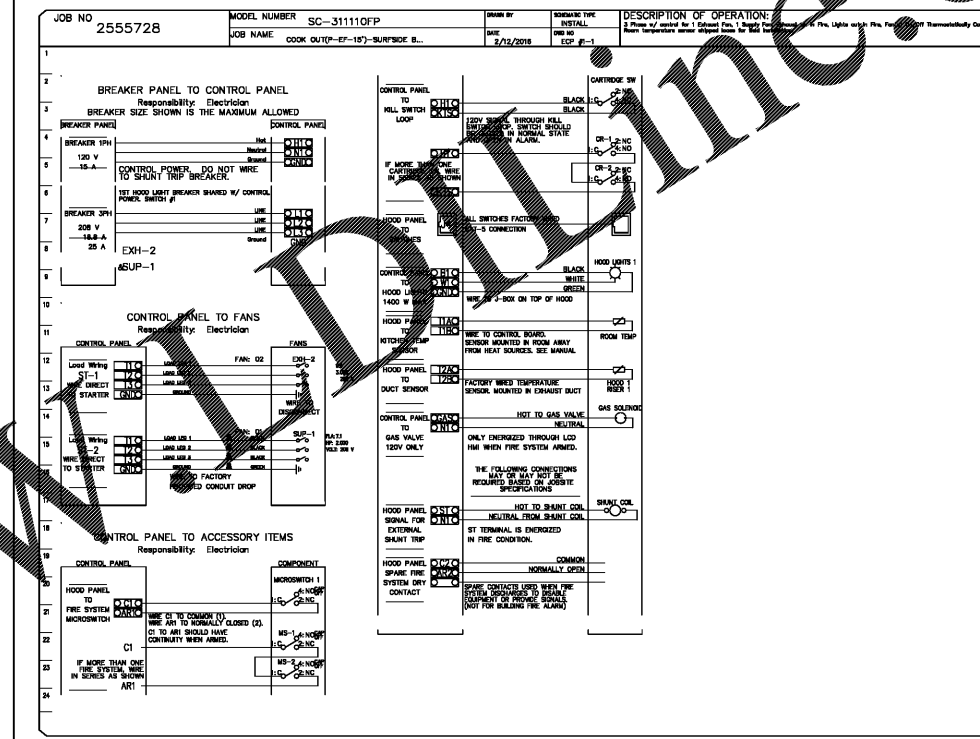
Height required to verify that the hood will fit and to size the enclosure panels

FOR QUESTIONS, CALL THE
PIEDMONT NORTH CAROLINA OFFICE
LONNIE GRANT (REGIONAL MANAGER)
PHONE: 336-996-8484, FAX: 336-996-0418
EMAIL: reg30@captivaire.com

PREWIRE PACKAGE INFORMATION

ELECTRICAL PACKAGES - Job#2555728

NO.	TAG	PACKAGE #	LOCATION	SWITCHES		OPTION	FANS CONTROLLED				
				LOCATION	QUANTITY		TYPE	#	H.P.	VOLT	
1		SC-31110FP	Utility Cabinet Left	Utility Cabinet Left	1 Light	Smart Controls Thermostatic Control	Supply	3	0.000	208	9.4
				Hood # 1	1 Fan		Exhaust	3	0.000	208	9.4



Order Plans

SECTION VIEW - MODEL 5424ND-2-ACPSF-F

INCANDESCENT LIGHT FIXTURE-HIGH TEMP ASSEMBLY, INCLUDES CLEAR THERMAL AND SHOCK RESISTANT GLASS (LUB FIXTURE)

FIELD WRAPPER 17.00" HIGH (SEE HOOD OPTION LIST)

EXHAUST RISER

HANGING ANGLE

20" CAPTIVE SOLID FILTER WITH HOOD

3" INTERNAL STANDBY

IT IS THE RESPONSIBILITY OF THE ARCHITECT/OWNER TO ENSURE THAT THE HOOD CLEARANCE FROM LIMITED-COMBUSTIBLE AND COMBUSTIBLE MATERIALS IS IN COMPLIANCE WITH LOCAL CODE REQUIREMENTS.

WITHDRAWN FROM ALL LEFT AND RIGHT QUARTER ENDS

BACKSPASH 120.00" HIGH X 240.00" LONG

EQUIPMENT BY OTHERS

Optima engineering

1650 South Tryon St., Suite 300
150 Fayetteville St., Suite 520 Raleigh, NC 27601
Phone: 704-338-1292 • www.optimaengineering.com
North Carolina License Number: C-0914

COOK OUT

2546 Chimney Rock Road
Hendersonville, NC

KITCHEN HOOD INFO - MECHANICAL

Date 08-04-17
Drawn By SJR
Check By MEH
Job No. 17-0081-000
Sheet

M4-1

FOR DESIGN INFORMATION ONLY