

Mk	Date	Description

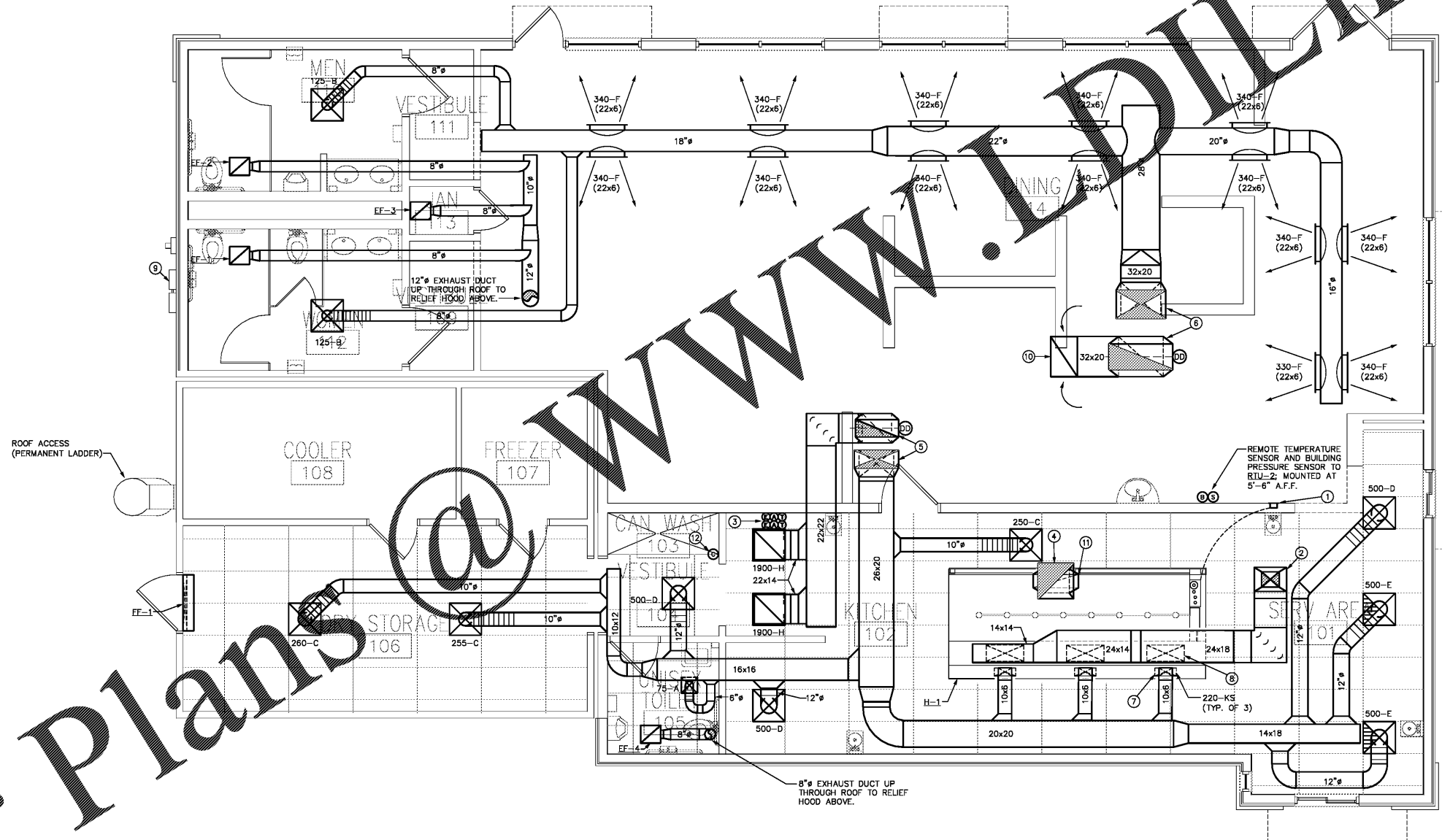
**FLOOR PLAN - MECHANICAL**

Date 08-04-17  
 Drawn By SJR  
 Check By MEH  
 Job No. 17-0081-000  
 Sheet

**M2-1**

NOTE:  
 DINING ROOM EXPOSED INSULATED DOUBLE WALL SPIRAL DUCTWORK SHALL BE PAINTED "RED" AND INSTALLED AS HIGH AS POSSIBLE (PREFERRED MINIMUM OF 11'-0" TO BOTTOM OF DUCT). GALVANIZED SURFACES SHALL BE PREPARED (CLEANED/STRIPPED/PROFILED) AND PRIMED AS INSTRUCTED BY THE PAINT MFR. TO ASSURE COMPATIBLE PAINT ADHERES PROPERLY. COORDINATE EXACT FINISH COLOR WITH ARCH/OWNER.

- CODED NOTES:**
- RECESSED REMOTE MANUAL PULL STATION FOR HOOD FIRE SUPPRESSION (ANSUL PIRANHA) SYSTEM.
  - 24x18 MAKE-UP AIR DUCT UP THROUGH ROOF TO KSE-1, TRANSITION IN VERTICAL TO FULL SIZE UNIT OPENING.
  - PROGRAMMABLE THERMOSTAT (SEE RTU SCHEDULE FOR REQUIREMENTS), AUDIO/VISUAL ALARM, AND EMERGENCY SHUT-DOWN SWITCH TO RTU-1 & RTU-2. COORDINATE EXACT LOCATION AND ARRANGEMENT WITH ARCH/OWNER (WITHIN CAGE ABOVE MANAGER'S DESK) PRIOR TO ROUGH-INS. THERMOSTATS SHALL BE LOCKED OUT BEFORE G.C. LEAVES SITE.
  - 18x20 KITCHEN HOOD EXHAUST AIR DUCT UP THROUGH ROOF TO KEF-1, TRANSITION IN VERTICAL TO FULL SIZE FAN OPENING.
  - 28x20 SUPPLY DUCT AND 22x22 RETURN DUCT UP THROUGH ROOF TO RTU-1, TRANSITION IN VERTICAL TO FULL SIZE UNIT OPENINGS.
  - 32x20 SUPPLY AND RETURN DUCTS UP THROUGH ROOF TO RTU-2, TRANSITION IN VERTICAL TO FULL SIZE UNIT OPENINGS.
  - 10x6 KITCHEN HOOD SUPPLY AIR DUCT DOWN TO HOOD, TRANSITION TO 16x6 HOOD CONNECTION (TYPICAL OF 3).
  - 28x12 KITCHEN HOOD MAKE-UP AIR DUCT DOWN TO HOOD CONNECTION (TYPICAL OF 3).
  - GAS METER, REFER TO PLUMBING DRAWINGS FOR ADDITIONAL INFO.
  - 32x20 RETURN AIR DUCT EXTENDED ABOVE DINING ROOM AND TURN UP 90 DEG (NO TURNING VANES). RETURN DUCT SHALL BE LINED FROM UNIT CONNECTION TO OPEN END OF DUCT WITH ACOUSTICAL INSULATION TO DAMPEN NOISE. COVER OPEN END OF DUCT WITH WELDED WIRE MESH.
  - 18x20 EXHAUST DUCT DOWN TO HOOD CONNECTION, TRANSITION AS REQUIRED TO FULL SIZE CONNECTION.
  - PROVIDE CARBON MONOXIDE SENSOR NEAR GAS FIRED INSTANTANEOUS WATER HEATERS. CO SENSOR SHALL SET OFF AN AUDIBLE AND VISUAL ALARM IF ACTIVATED.



**1 FLOOR PLAN - MECHANICAL**  
 1/4" = 1'-0"

Order Plans @