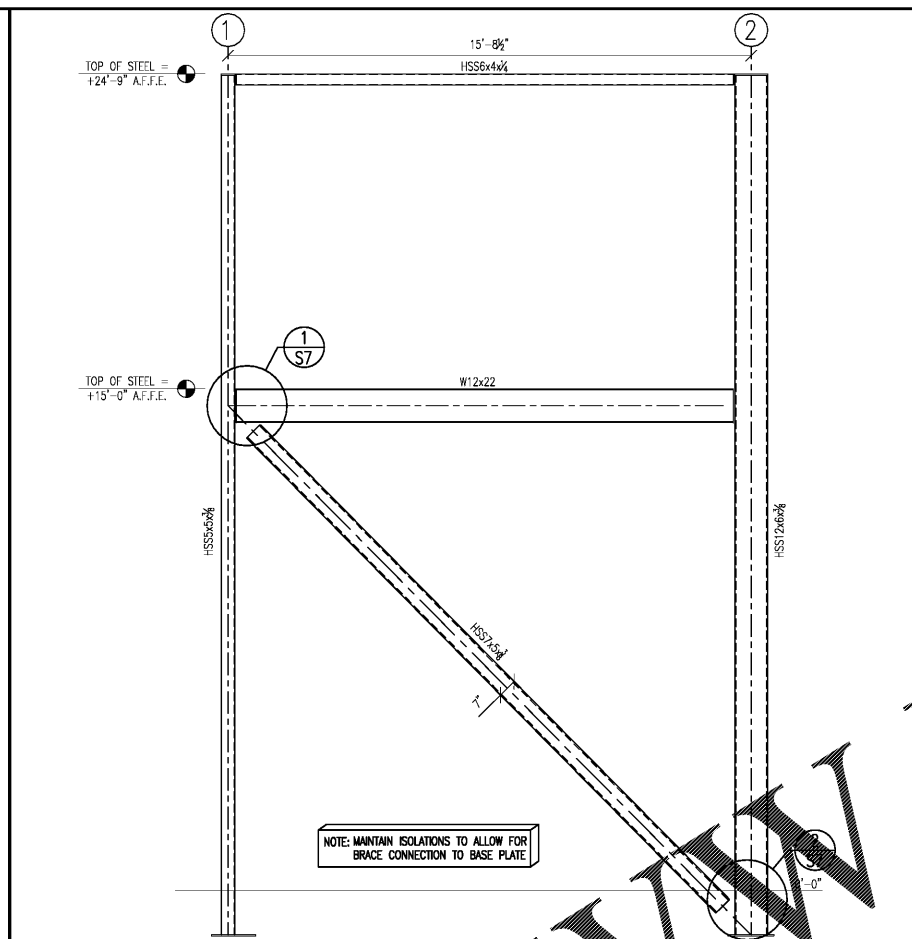
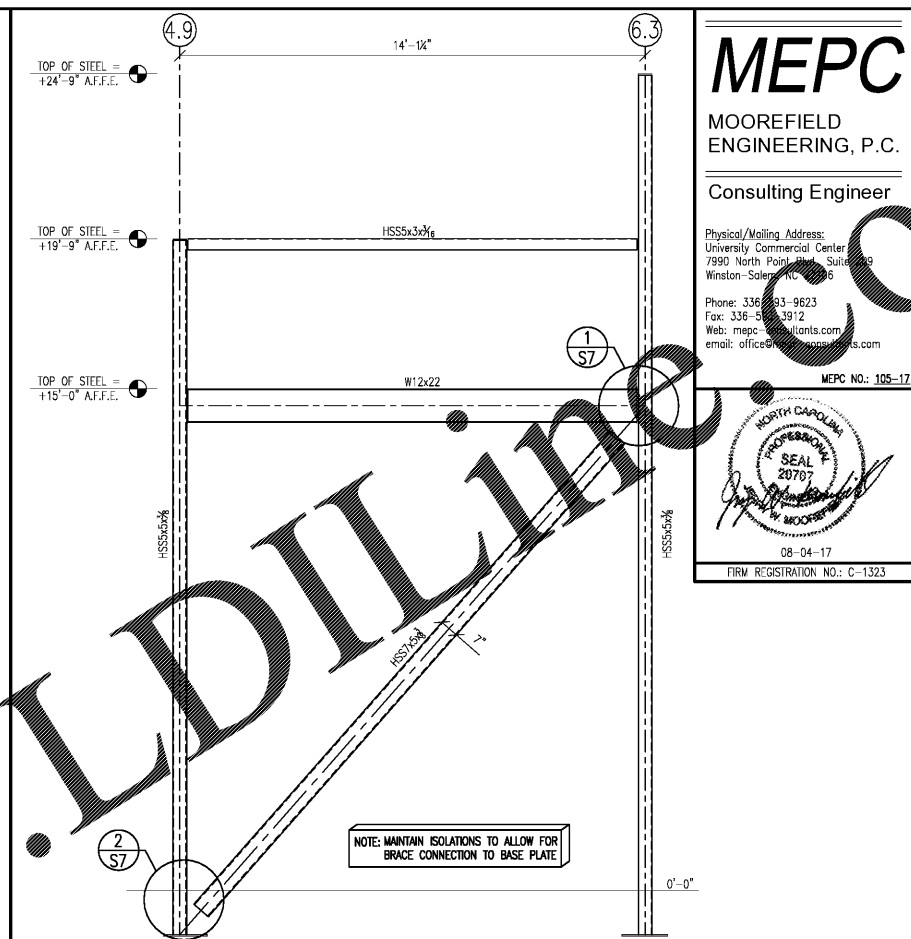


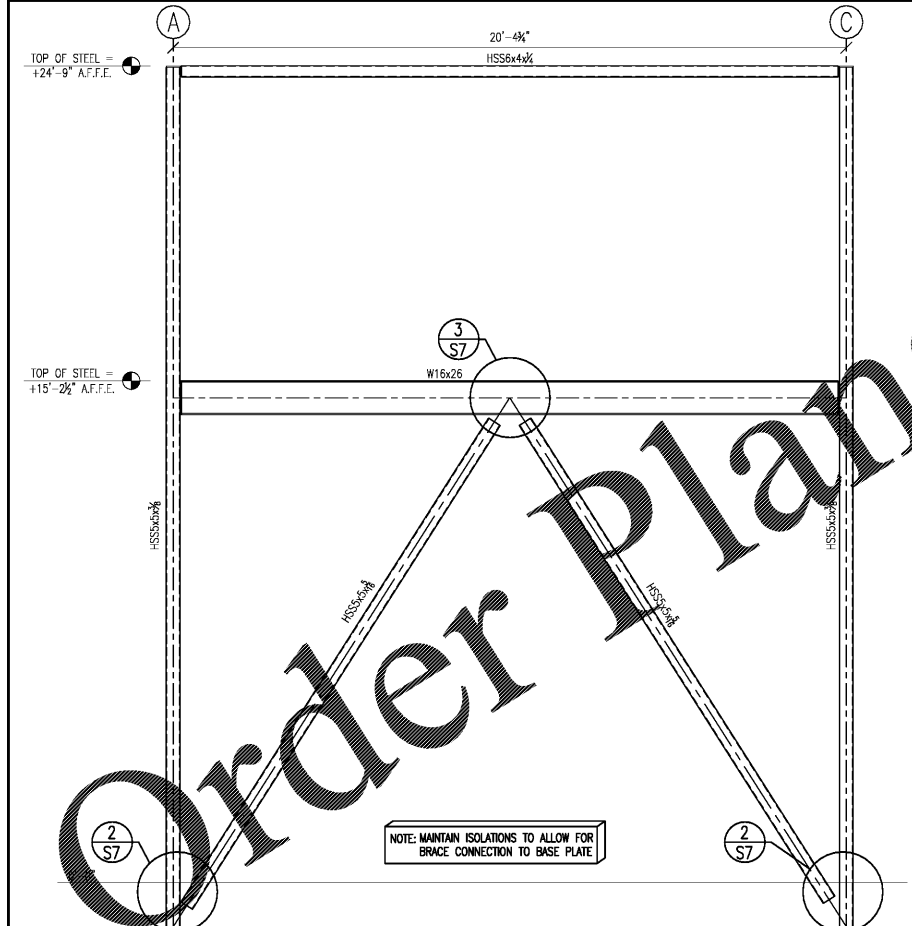
SECTION NO. 1 S6
 BF1 - BRACED FRAME DETAIL @ GRIDLINE A
 SCALE 3/8" = 1'-0"



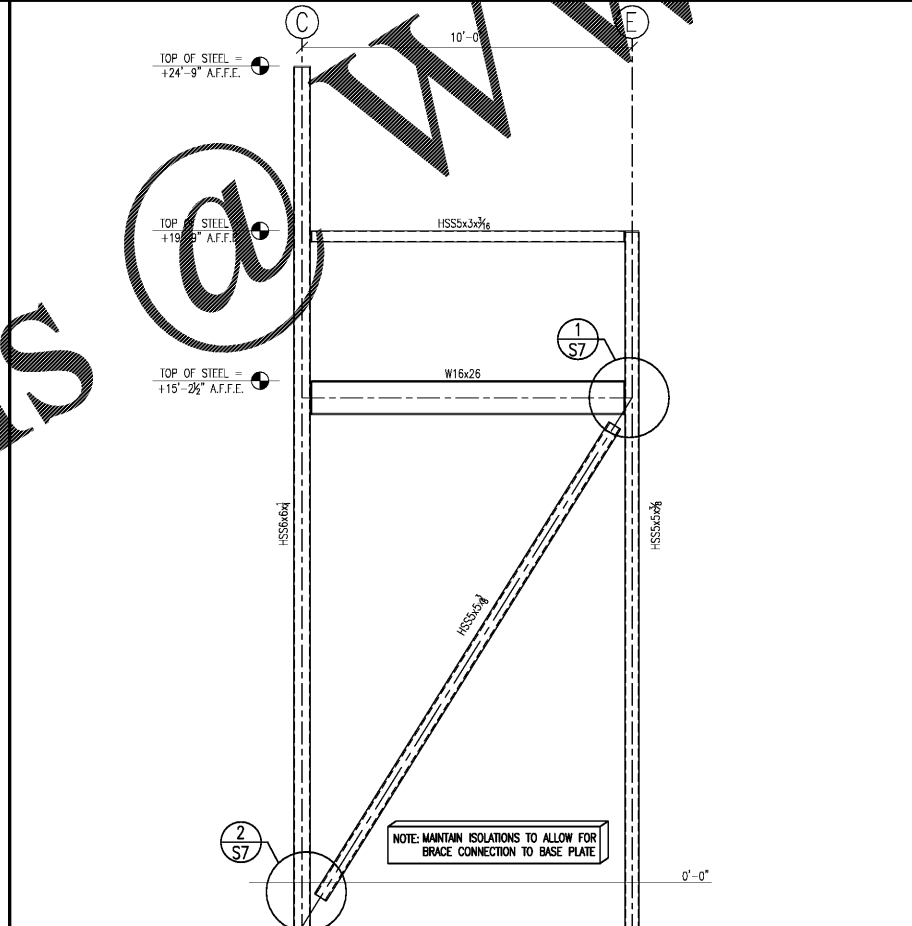
SECTION NO. 2 S6
 BF2 - BRACED FRAME DETAIL @ GRIDLINE C
 SCALE 3/8" = 1'-0"



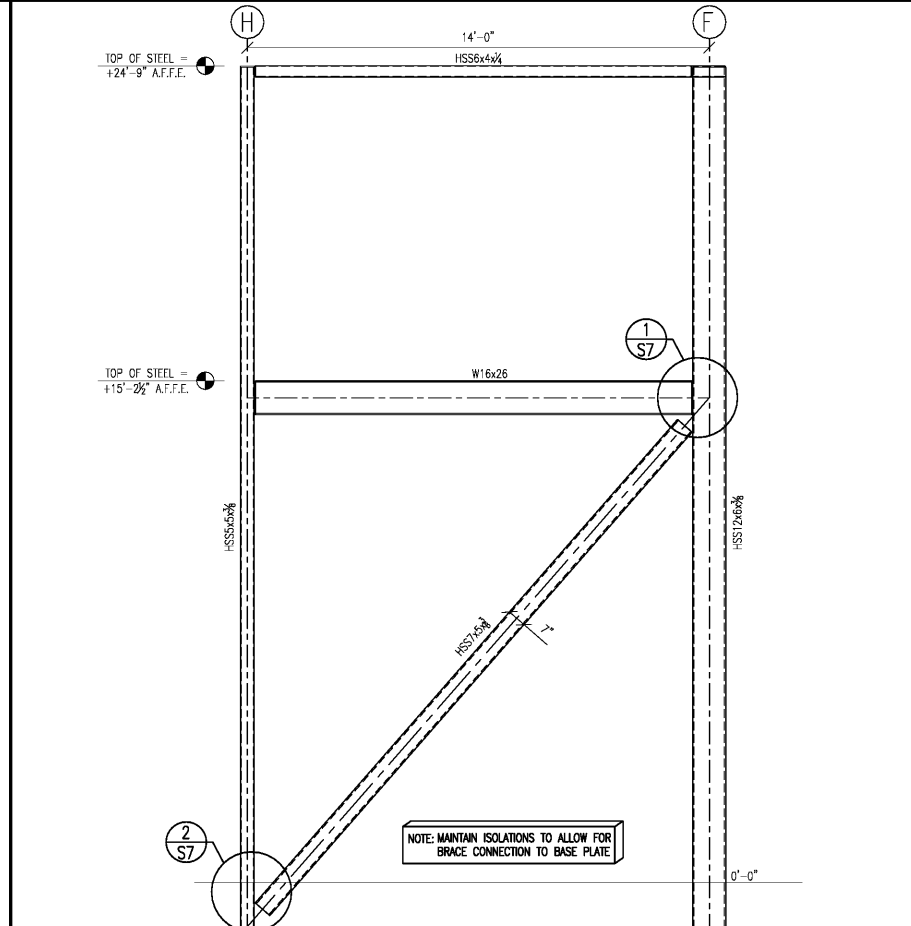
SECTION NO. 3 S6
 BF3 - BRACED FRAME DETAIL @ GRIDLINE G
 SCALE 3/8" = 1'-0"



SECTION NO. 4 S6
 BF4 - BRACED FRAME DETAIL @ GRIDLINE 1
 SCALE 3/8" = 1'-0"



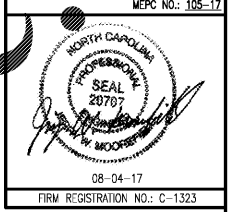
SECTION NO. 5 S6
 BF5 - BRACED FRAME DETAIL @ GRIDLINE 2.7
 SCALE 3/8" = 1'-0"



SECTION NO. 6 S6
 BF6 - BRACED FRAME DETAIL @ GRIDLINE 7
 SCALE 3/8" = 1'-0"

MEPC
 MOOREFIELD
 ENGINEERING, P.C.
 Consulting Engineer

Physical/Working Address:
 University Commercial Center
 7990 North Point Blvd., Suite 300
 Winston-Salem, NC 27157
 Phone: 336-733-9623
 Fax: 336-733-3912
 Web: mepc-engineers.com
 email: office@mepc-engineers.com



INDISEY ARCHITECTURE
 6 S. Elm Street, Suite 300
 Greensboro, NC 27401
 Phone: 336.617.4432
 www.indiseyarchitecture.com

COOK OUT
 2546 Chimney Rock Road
 Hendersonville, NC

NO.	DATE	DESCRIPTION

BRACED FRAME ELEVATIONS

DATE 08-04-2017
 DRAWN BY JKP
 CHECK BY JUM
 JOB NO. 11-081-000
 SHEET

S6 of S8