

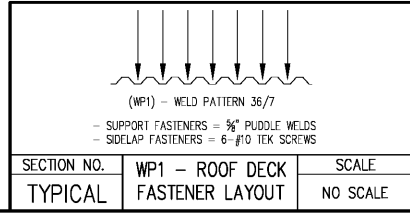
**ROOF FRAMING PLAN**  
 SCALE: 1/4" = 1'-0"

- GENERAL NOTES - ROOF FRAMING PLAN:**
1. I.O.S. VARIES - SEE PLAN AND DETAILS.
  2. PROVIDE MEMBER SIZE AND SPACING AS NOTED ON PLANS.
  3. PROVIDE 1.5" TYPE B 22GA ROOF DECK WHERE INDICATED.
  4. PROVIDE BAR JOIST SIZE AND SPACING AS NOTED ON PLANS. BRIDGING PER SJI.
  5. STEEL FABRICATOR SHALL PROVIDE MISC. FILLER STEEL FOR THE SUPPORT OF THE METAL DECK EDGES AROUND STRUCTURAL MEMBERS AND SKEWED DECK EDGES.
  6. NET UPLIFT = 15 PSF INTERIOR ZONE, 30 PSF EDGE ZONE, 50 PSF CORNER ZONE.
  7. CONTRACTOR SHALL SUBMIT SHOP DRAWINGS FOR REVIEW BY ARCHITECT/ENGINEER.
  8. ALL BAR JOIST SEATS TO BE 2x8" DEEP U.N.O. - SEE SECTIONS.
  9. DESIGN JOIST W/ SP DESIGNATIONS FOR RTU WEIGHTS AS INDICATED.

NOTE:  
 ALL ROOFING MATERIALS AND FINISHES SHALL BE SUPPLIED PER MANF. REQUIREMENTS WITH INSTALLATION PROCEDURES THAT MEET THE WIND LOAD REQUIREMENTS OUTLINED IN THE STRUCTURAL DESIGN LOADS - SEE ARCH. DRAWINGS FOR ALL FINISH MATERIALS

LIGHT GAUGE HEADER/JAMB/SILL SCHEDULE				
MARK	DESCRIPTION	JAMB CONDITION	SILL CONDITION	COMMENTS
LGH1	2-600S162-43(33ksi) METAL STUDS 2-600I150-43(33ksi) METAL TRACKS	3-600S162-43(33ksi) METAL STUDS 3-600I150-43(33ksi) METAL TRACKS	2-600S162-43(33ksi) METAL STUDS 2-600I150-43(33ksi) METAL TRACKS	SEE DETAIL 8/S3
LGH2	2-600S162-43(33ksi) METAL STUDS 2-600I150-43(33ksi) METAL TRACKS	3-600S162-43(33ksi) METAL STUDS 3-600I150-43(33ksi) METAL TRACKS	N/A	SEE DETAIL 8/S3
LGH3	1-600S162-43(33ksi) METAL STUDS 1-600I150-43(33ksi) METAL TRACKS	2-600S162-43(33ksi) METAL STUDS 2-600I150-43(33ksi) METAL TRACKS	1-600S162-43(33ksi) METAL STUDS 1-600I150-43(33ksi) METAL TRACKS	SEE DETAIL 8/S3
LGH4	2-600S162-43(33ksi) METAL STUDS 2-600I150-43(33ksi) METAL TRACKS	2-600S162-43(33ksi) METAL STUDS 2-600I150-43(33ksi) METAL TRACKS	N/A	SEE DETAIL 8/S3

NOTE: SEE ARCH. PLANS FOR DIMENSIONS AND FOR WINDOW & DOOR OPENING LOCATIONS



**MEPC**  
 MOOREFIELD  
 ENGINEERING, P.C.  
 Consulting Engineer

Physical/Working Address:  
 University Commercial Center  
 7890 North Point Blvd., Suite 209  
 Winston-Salem, NC 27106

Phone: 336-593-9623  
 Fax: 336-593-3912  
 Web: mepc-consultants.com  
 email: office@mepc-consultants.com

MEPC NO.: 105-17

DATE: 08-04-2011  
 DRAWN BY: JKP  
 CHECK BY: JUM  
 JOB NO.: 11-08-000  
 SHEET: S2 of S8

NO.	DATE	DESCRIPTION

**ROOF FRAMING PLAN**