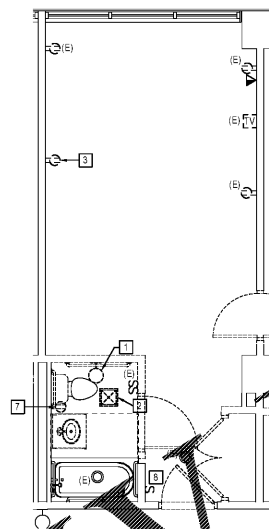


**1** NEW WORK PLAN - KA1  
E440 SCALE: 1/4" = 1'-0"

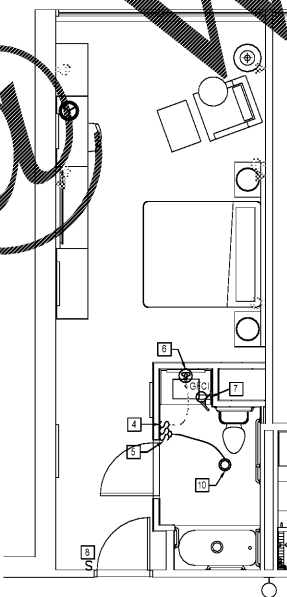


**2** DEMOLITION PLAN - KA1  
E440 SCALE: 1/4" = 1'-0"

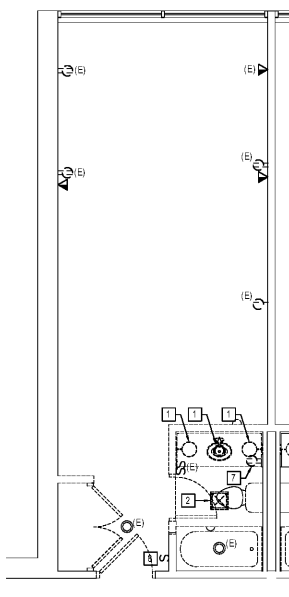
**KEY NOTES**

- 1 E.C. TO DISMANTLE AND REMOVE EXISTING WALL MOUNTED LIGHT FIXTURE. E.C. TO REUSE EXISTING LIGHTING CIRCUIT TO POWER NEW FIXTURE. REFER TO NEW WORK PLAN.
- 2 E.C. TO DISMANTLE AND REMOVE EXISTING EXHAUST FAN. E.C. TO REUSE EXISTING CIRCUIT TO POWER NEW EXHAUST FAN UNIT. REFER TO NEW WORK PLAN.
- 3 E.C. TO REMOVE EXISTING DUPLEX RECEPTACLE AND PROVIDE AND INSTALL NEW DUPLEX RECEPTACLE. E.C. TO PROVIDE NEW TV CONNECTION.
- 4 E.C. TO REMOVE NEW LED LIGHTED SWITCH. E.C. SHALL REUSE CONTROL WIRING FOR NEW LED MIRROR FIXTURE.
- 5 E.C. TO PROVIDE NEW DOUBLE SWITCH TO CONTROL EXHAUST/LIGHT COMBO. LIGHT AND EXHAUST FAN SHALL BE SWITCHED SEPARATELY.
- 6 E.C. TO PROVIDE NEW FUNCTIONAL SWITCH FOR NEW LIGHTED MIRROR. E.C. TO REUSE EXISTING SWITCH.
- 7 E.C. TO REMOVE EXISTING RECEPTACLE. E.C. TO PROVIDE AND INSTALL NEW 120V GFCI RECEPTACLE. REFER TO NEW WORK DRAWING FOR LOCATION. E.C. SHALL REUSE EXISTING CIRCUIT TO FEED NEW RECEPTACLE.
- 8 E.C. TO DISCONNECT AND REMOVE EXISTING SINGLE POLE LIGHT SWITCH. E.C. TO PROVIDE NEW ILLUMINATED ROCKER SWITCH, LEVITON MODEL # R72-05811-2WS AT NEW LOCATION SHOWN ON NEW WORK PLAN. E.C. SHALL PROVIDE ALL NECESSARY EQUIPMENT TO CONTROL EXISTING LIGHT FIXTURE.
- 9 E.C. TO REMOVE EXISTING RECEPTACLE. E.C. TO PROVIDE AND INSTALL NEW 120V GFCI RECEPTACLE. REFER TO NEW WORK DRAWING FOR LOCATION. E.C. SHALL REUSE EXISTING CIRCUIT TO FEED NEW RECEPTACLE.
- 10 E.C. TO PROVIDE AND INSTALL NEW EXHAUST FAN/LED LIGHT COMBO UNIT. BROAN SERIES 744, MODEL #744LED.

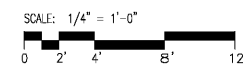
NOTE: E.C. TO COORDINATE WITH ARCHITECTURAL DRAWINGS FOR EXACT LOCATIONS AND MOUNTING HEIGHTS OF DEVICES IN GUEST ROOMS.



**3** NEW WORK PLAN - KA2-L  
E440 SCALE: 1/4" = 1'-0"



**4** DEMOLITION PLAN - KA2-L  
E440 SCALE: 1/4" = 1'-0"



Order Plans @ WWW.LDENGINEERS.COM