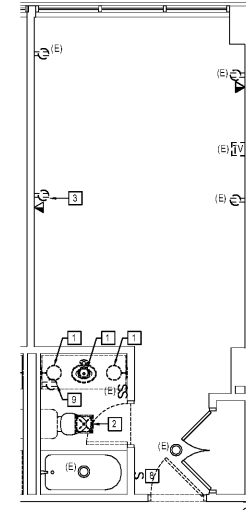
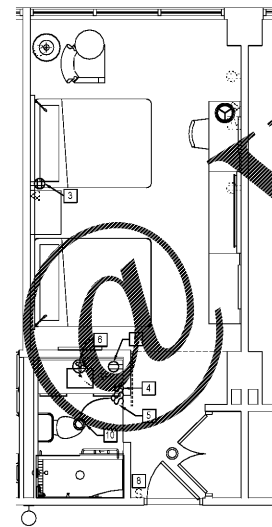


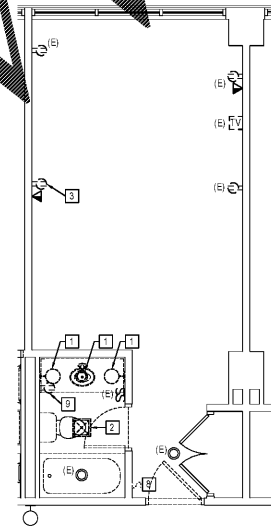
1 NEW WORK PLAN - QQ2 E420 SCALE: 1/4" = 1'-0"



2 DEMOLITION PLAN - QQ2 E420 SCALE: 1/4" = 1'-0"



3 NEW WORK PLAN - QQ1 E420 SCALE: 1/4" = 1'-0"

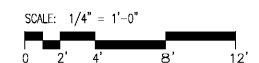


4 DEMOLITION PLAN - QQ1 E420 SCALE: 1/4" = 1'-0"

KEY NOTES

- 1. E.C. TO DISCONNECT AND REMOVE EXISTING WALL MOUNTED LIGHT FIXTURE. E.C. TO REUSE EXISTING LIGHTING CIRCUIT TO POWER NEW FIXTURES, REFER TO NEW WORK DRAWING FOR LOCATION.
2. E.C. TO DISCONNECT AND REMOVE EXISTING EXHAUST FAN. E.C. TO REUSE EXISTING CIRCUIT TO POWER NEW EXHAUST FAN/LIGHT UNIT, REFER TO NEW WORK PLAN.
3. E.C. TO REMOVE EXISTING DUPLEX RECEPTACLE AND PROVIDE AND INSTALL NEW QUAD RECEPTACLE. E.C. TO PROVIDE NEW NEW TV CONNECTION.
4. E.C. TO PROVIDE NEW LED LIGHTED SWITCH. E.C. SHALL REUSE CONTROL WIRING FOR NEW LIGHTED MIRROR FIXTURE.
5. E.C. TO PROVIDE NEW DOUBLE SWITCH TO CONTROL EXHAUST/LIGHT COMBO. LIGHT AND EXHAUST FAN SHALL BE SWITCHED SEPARATELY.
6. E.C. TO PROVIDE NEW JUNCTION BOX FOR NEW LIGHTED MIRROR. E.C. TO REUSE EXISTING SWITCH.
7. E.C. TO PROVIDE NEW DUPLEX RECEPTACLE. E.C. SHALL TIE NEW RECEPTACLE TO EXISTING CIRCUIT SERVING GUEST ROOM. E.C. TO PROVIDE NEW NEW TV CONNECTION AS REQUIRED, REFER TO NEW WORK DRAWING.
8. E.C. TO DISCONNECT AND REMOVE EXISTING SINGLE POLE LIGHT SWITCH. E.C. TO PROVIDE NEW ILLUMINATED ROCKER SWITCH, LEVITON MODEL # RT2-05611-2WS AT NEW LOCATION SHOWN ON NEW WORK PLAN. E.C. SHALL PROVIDE ALL NECESSARY EQUIPMENT TO CONTROL EXISTING LIGHT FIXTURE.
9. E.C. TO REMOVE EXISTING RECEPTACLE. E.C. TO PROVIDE AND INSTALL NEW 120V GFCI RECEPTACLE, REFER TO NEW WORK DRAWING FOR LOCATION. E.C. SHALL REUSE EXISTING CIRCUIT TO FEED NEW RECEPTACLE.
10. E.C. TO PROVIDE AND INSTALL NEW EXHAUST FAN/LIGHT COMBO UNIT. BROAN SERIES T44, MODEL #74LED.

NOTE: E.C. TO COORDINATE WITH ARCHITECTURAL DRAWINGS FOR EXACT LOCATIONS AND MOUNTING HEIGHTS OF DEVICES IN GUEST ROOMS.



Order Plans

WWW.LDLine.com