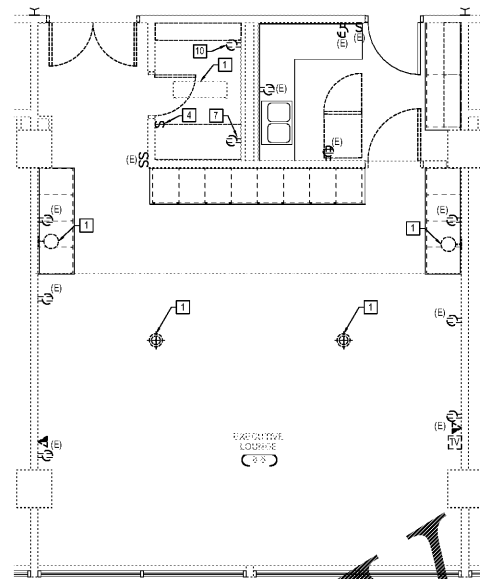


1 NEW WORK PLAN - EXECUTIVE LOUNGE E401 SCALE: 1/4" = 1'-0"



2 DEMOLITION PLAN - EXECUTIVE LOUNGE E401 SCALE: 1/4" = 1'-0"

KEY NOTES

- 1 E.C. TO DISMANTLE AND REMOVE EXISTING WALL MOUNTED LIGHT FIXTURE. E.C. TO REUSE EXISTING LIGHTING CIRCUIT TO POWER NEW FIXTURES, REFER TO NEW WORK PLAN.
 - 2 E.C. TO DISMANTLE AND REMOVE EXISTING EXHAUST FAN. E.C. TO REUSE EXISTING CIRCUIT TO POWER NEW EXHAUST FAN/LIGHT UNIT, REFER TO NEW WORK PLAN.
 - 3 E.C. TO REMOVE EXISTING DUPLEX RECEPTACLE AND PROVIDE AND INSTALL NEW QUAD RECEPTACLE.
 - 4 E.C. TO PROVIDE NEW LED LIGHTED SWITCH. E.C. SHALL REUSE CONTROL WIRING FOR NEW LIGHTED MIRROR FIXTURE.
 - 5 E.C. TO PROVIDE NEW DOUBLE SWITCH TO CONTROL EXHAUST/LIGHT COMBO. LIGHT AND EXHAUST FAN SHALL BE SWITCHED SEPARATELY.
 - 6 E.C. TO PROVIDE NEW JUNCTION BOX FOR LED LIGHTED MIRROR. E.C. TO REUSE EXISTING SWITCH.
 - 7 E.C. TO REMOVE EXISTING RECEPTACLE. E.C. TO PROVIDE AND INSTALL NEW 120V GFCI RECEPTACLE. REFER TO NEW WORK DRAWING FOR LOCATION. E.C. SHALL REUSE EXISTING CIRCUIT TO POWER NEW RECEPTACLE.
 - 8 E.C. TO PROVIDE AND INSTALL NEW RECEPTACLE MOUNTED ON A.F.F. E.C. SHALL TIE RECEPTACLE TO NEAREST GFI RECEPTACLE CIRCUIT IN THE SPACE.
 - 9 E.C. TO PROVIDE AND INSTALL ALL NEW EXHAUST FAN/LIGHT COMBO UNIT. BROAN SERIES 744 MODEL.
 - 10 E.C. TO DISCONNECT, DISMANTLE AND REMOVE COMPLETELY EXISTING RECEPTACLE. REMOVE SHALL INCLUDE ALL CONDUIT AND CONDUCTORS BACK TO NEAREST JUNCTION BOX.
 - 11 FURNITURE OWNERS PROVIDED AND INSTALLED BY E.C. E.C. SHALL REUSE EXISTING CIRCUIT AND LIGHTING CONTROLS FOR NEW FIXTURE.
- NOTE: E.C. TO COORDINATE WITH ARCHITECTURAL DRAWINGS FOR EXACT LOCATIONS AND MOUNTING HEIGHTS OF DEVICES IN GUEST ROOMS.

Order Plans @ WWW.LDOnline.com



COPYRIGHT 2017 BASKERVILLE. USE OF THIS WORK IN WHOLE OR IN PART IS PROHIBITED WITHOUT EXPRESS WRITTEN CONSENT.

ISSUE 06/12/2017 - CONSTRUCTION DRAWINGS

DRAWING TITLE ENLARGED EXECUTIVE LOUNGE - ELECTRICAL

DRAWING NO. E401

