

GENERAL GUESTROOM NOTES

1. RELOCATE OUTLETS AS NEEDED TO COORDINATE WITH NEW FF&E LAYOUTS.
2. REFER TO FINISH NOTES ON A001 FOR MORE DETAILS.
3. STORE & PROTECT GUEST ROOM SAFES. INSTALL ONCE RENOVATION IS COMPLETE.
4. GC/PROPERTY TO QUANTIFY HOW MANY WALLS ALREADY HAVE VWC REMOVED.
5. REFER TO NOTES - PATCH & REPAIR.
6. GC TO VERIFY PRESENCE OF ORANGE PEEL TEXTURE ON ALL WALL TO RECEIVE PAINT. ADD TEXTURE AS NECESSARY.
7. REFER TO 6A/A440 FOR TYPICAL ACCESSIBLE GUEST BATHROOM CEILING AREA DEMO WORK.
8. REFER TO 6A/A440 FOR TYPICAL ACCESSIBLE GUEST BATHROOM CEILING AREA NEW WORK.
9. REFER TO 6A/A410 FOR TYPICAL GUEST BATHROOM CEILING AREA DEMO WORK.
10. REFER TO 6A/A410 FOR TYPICAL GUEST BATHROOM CEILING AREA NEW WORK.
11. REFER TO A001 FOR PATCH AND REPAIR NOTES.
12. CARBON MONOXIDE DETECTORS ARE BATTERY OPERATED AND NOT TIED INTO THE FACP.
13. REPLACE ALL STAINED/DISCOLORED SMOKE DETECTORS.
14. PROVIDE NEW THRESHOLD T-1 AT CONNECTOR DOORS. REFER TO OVERALL PLANS FOR LOCATION OF ROOMS.

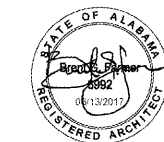
KEYNOTES

- 2.1 REMOVE THRESHOLD.
- 2.2 REMOVE TILE AND SETTING BED.
- 2.3 REMOVE TILE CARPET.
- 2.10 REMOVE VINYL WALL COVERING AND CORNER GUARDS (IF ANY). DO NOT ALLOW THE FINISH SURFACE OF THE DRYWALL TO BE TORN. PATCH AND PAINT WALL SURFACE TO RECEIVE NEW FINISHES.
- 2.14 REMOVE WINDOW TREATMENT, AND HARDWARE. VALANCE REMAINS.
- 2.16 REMOVE WINDOW TREATMENTS AND HARDWARE.
- 2.26 REMOVE CEILING TEXTURE. PREPARE TO RECEIVE NEW SMOOTH FINISH.
- 2.29 REMOVE DOOR, DOOR FRAME, AND SALVAGE DOOR HARDWARE.
- 2.31 REMOVE PARTITION TO EXTENTS SHOWN.
- 2.52 REMOVE CLOSET SHELF AND ROD. RETAIN SAFE FOR REINSTALLATION. REMOVE IRON CRADLE.
- 2.62 REMOVE EXISTING RECEPTACLE. REFER TO ELECTRICAL DRAWINGS.
- 2.63 RELOCATE RECEPTACLE. REFER TO ELECTRICAL DRAWINGS.
- 2.67 REMOVE EXISTING PICTURE, WIRING, & J-BOX.
- 2.70 REMOVE FAN COIL UNIT. PATCH CEILING TO MATCH ADJACENT HEIGHT AND FINISH.
- 5.1 NEW PARTITION.
- 8.1 PROVIDE NEW DOOR AND HARDWARE.
- 8.3 PROVIDE NEW DOOR, DOOR FRAME, AND HARDWARE.
- 9.1 PROVIDE NEW TILE AND SETTING BED.
- 9.2 NEW CARPET AND PAD.
- 9.3 PROVIDE NEW THRESHOLD.
- 9.4 NEW VINYL WALL COVERING.
- 9.5 PAINT CEILING.
- 9.7 PAINT WALLS. REFER TO FINISH PLAN. GC TO VERIFY PRESENCE OF ORANGE PEEL TEXTURE. PROVIDE ORANGE PEEL TEXTURE AS NECESSARY.
- 9.9 PAINT EXISTING WOOD VALANCE.
- 9.29 PROVIDE NEW GWB CEILING. MATCH EXISTING FRAMING AND GWB.
- 9.30 FULL HEIGHT CORNER GUARD ABOVE BASE.
- 9.32 SKIM COAT CEILING FOR SMOOTH SURFACE.
- 23.4 PROVIDE NEW FAN COIL UNIT.
- 28.4 NEW RECEPTACLE. REFER TO ELECTRICAL DRAWINGS.
- 28.6 RELOCATED RECEPTACLE.

PROJECT

2.160425.0
DOUBLETREE
BIRMINGHAM
ALABAMA
CONVERSION

8 PERIMTER PARK
SOUTH
BIRMINGHAM, AL
35243

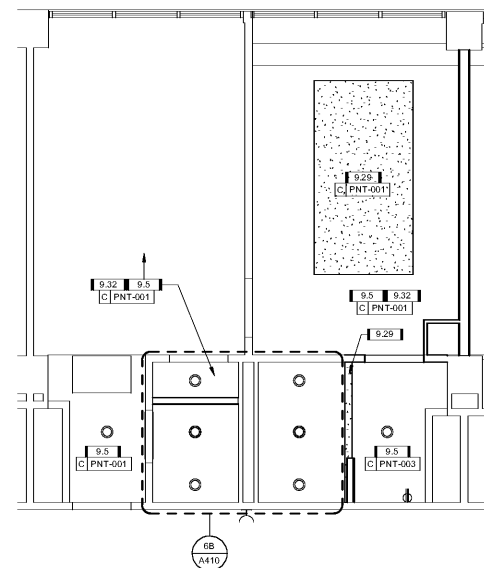


COPYRIGHT 2017 BASKERVILL. USE OF THIS WORK IN WHOLE OR IN PART IS PROHIBITED WITHOUT EXPRESSED WRITTEN CONSENT.

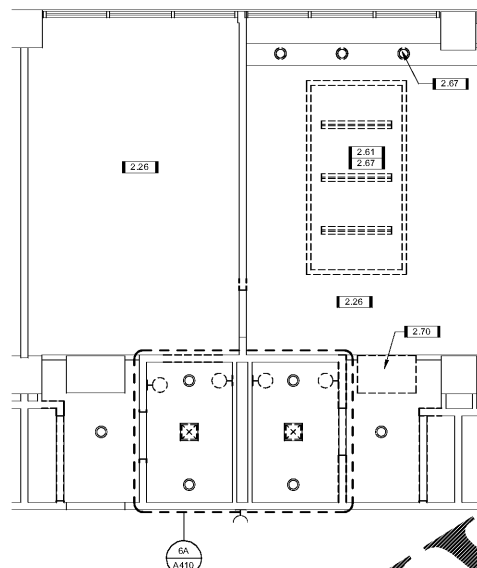
ISSUE
6/12/2017 -
CONSTRUCTION SET

DRAWING TITLE
ENLARGED
GUESTROOM PLANS -
ACCESSIBLE KING
SUITE WITH ROLL-IN
SHOWER KSARI - RM
205

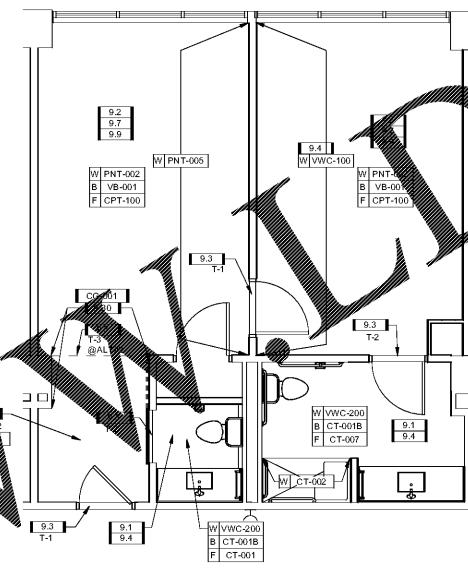
DRAWING NO.
A442



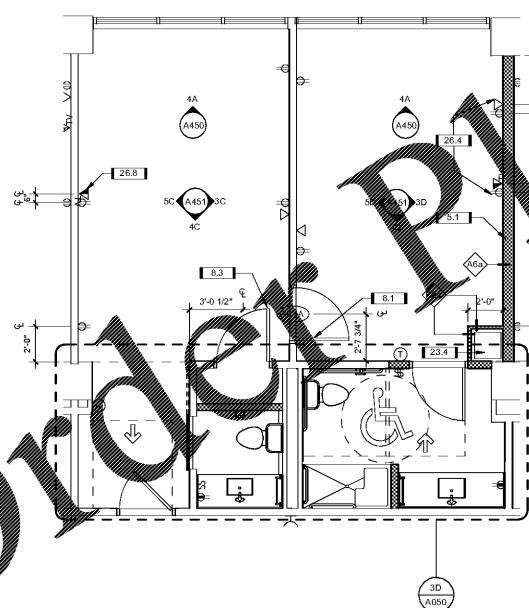
6C RENOVATION RCP - KSARI
SCALE: 1/4" = 1'-0"



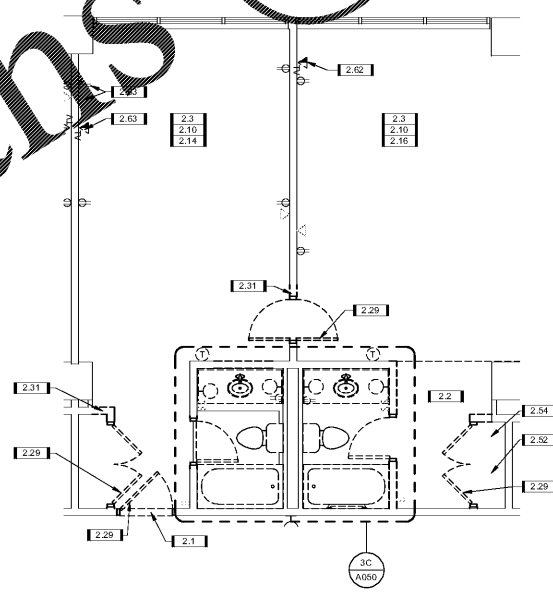
5C DEMOLITION RCP - KSARI
SCALE: 1/4" = 1'-0"



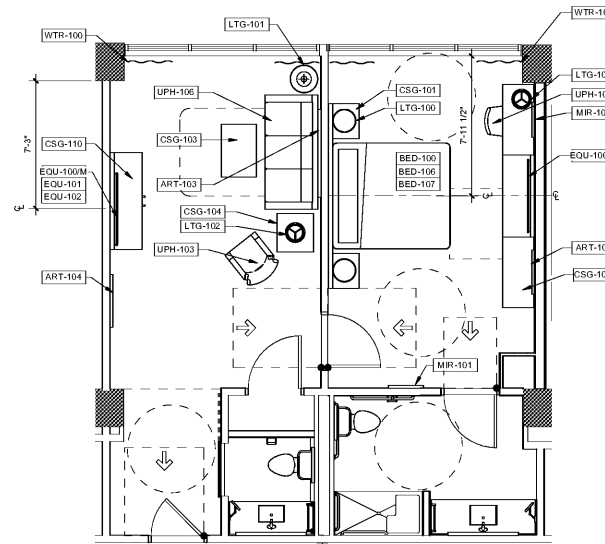
3C FINISH PLAN - KSARI
SCALE: 1/4" = 1'-0" DRAWING REF: A112



6A CONSTRUCTION PLAN - KSARI
SCALE: 1/4" = 1'-0" DRAWING REF: A112



5A DEMOLITION PLAN - KSARI
SCALE: 1/4" = 1'-0" DRAWING REF: A112



3A FF&E PLAN - KSARI
SCALE: 1/4" = 1'-0" DRAWING REF: A112

Order Plans @ WWW.DIYPLANS.COM