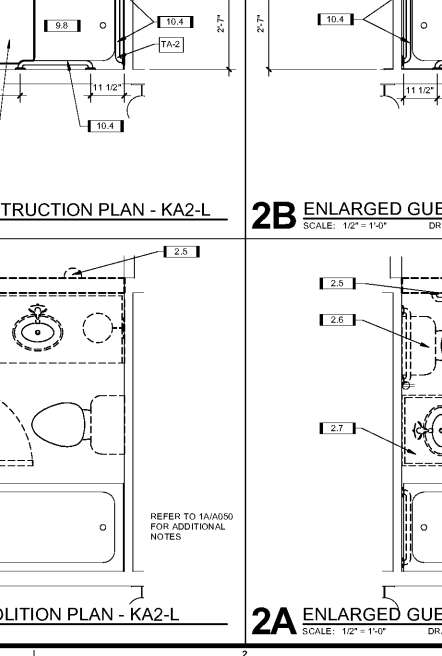
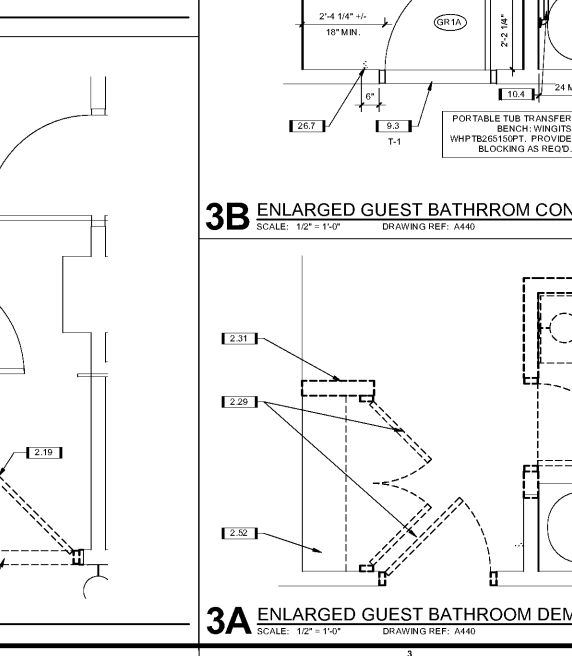
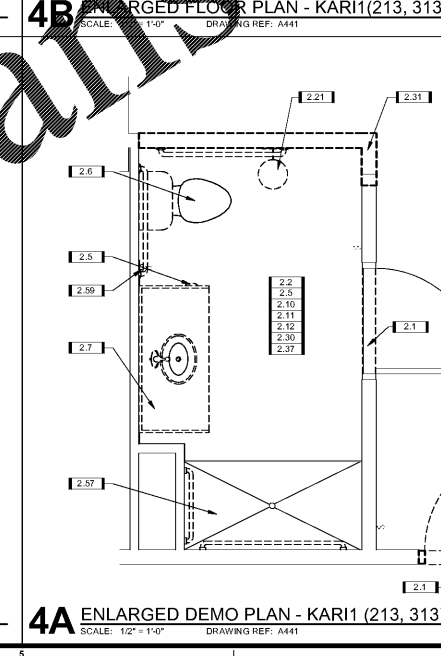
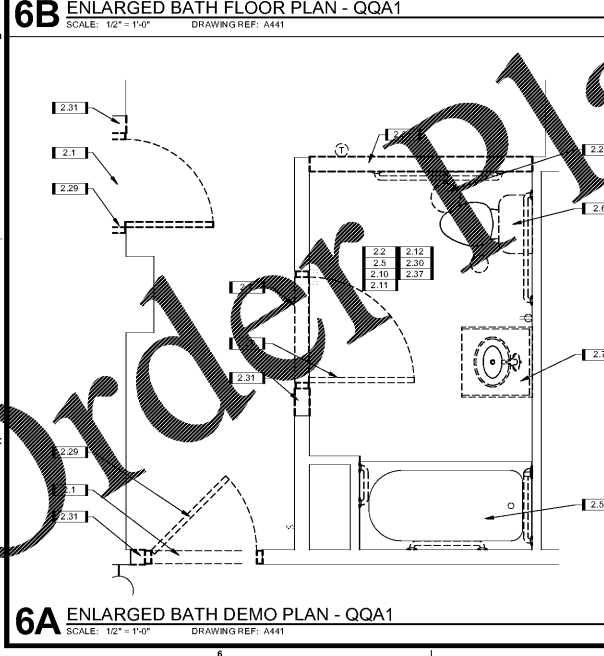
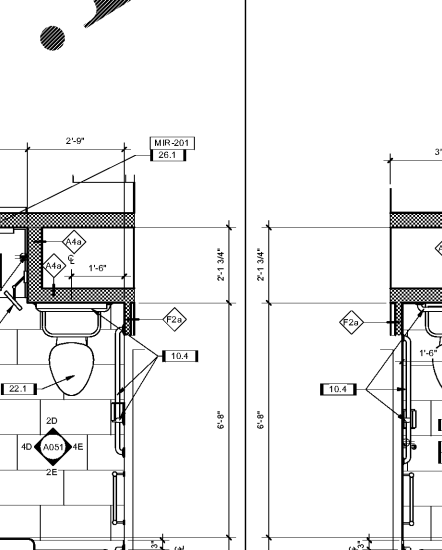
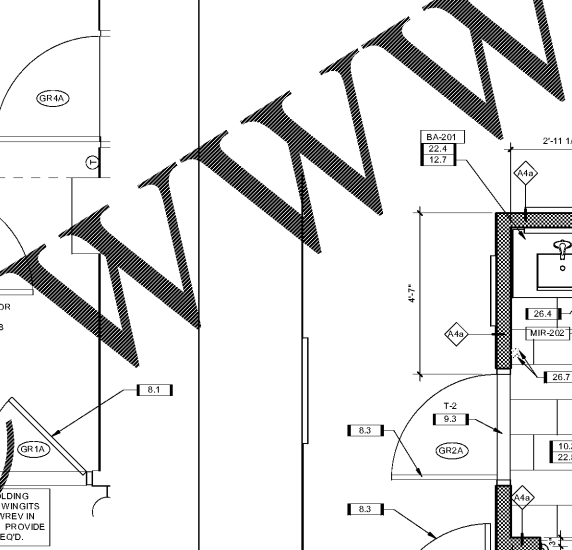
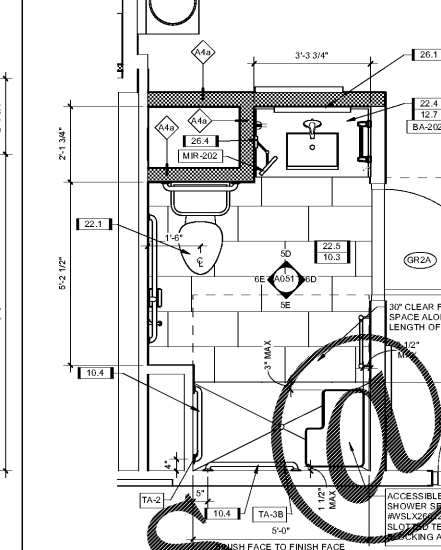
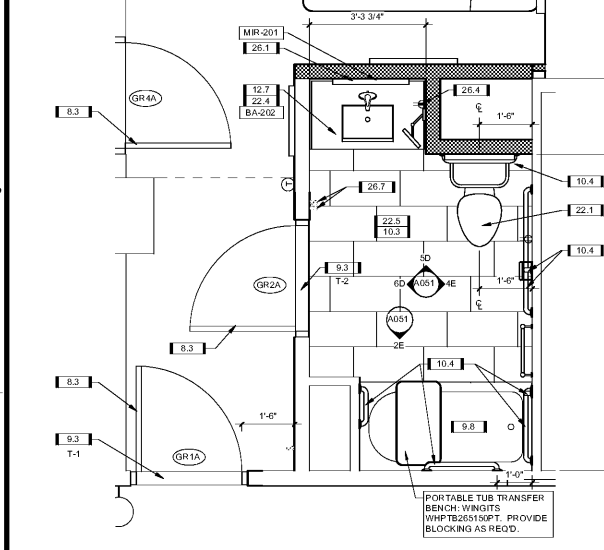
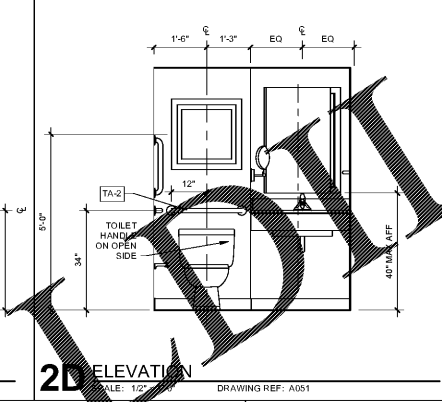
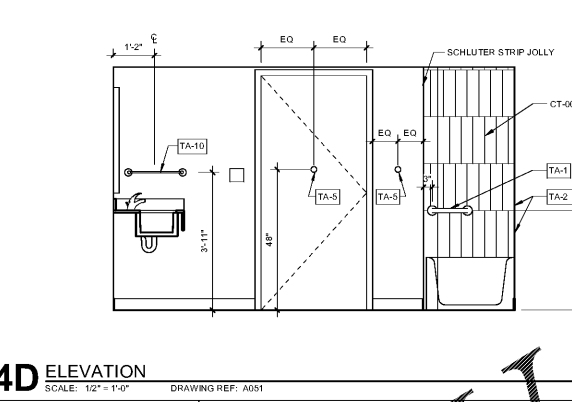
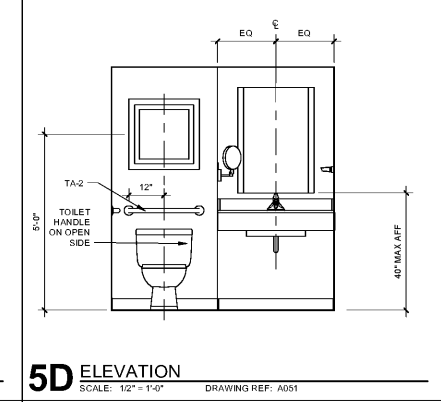
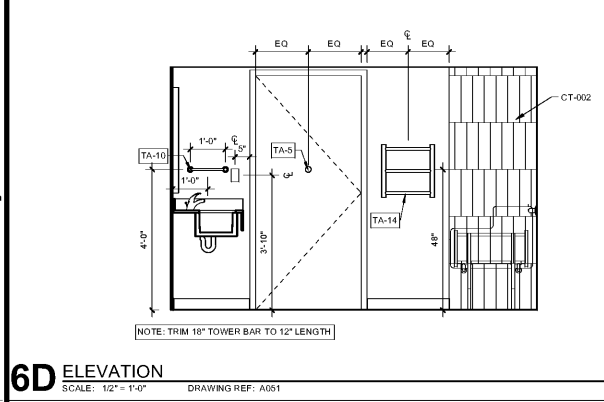
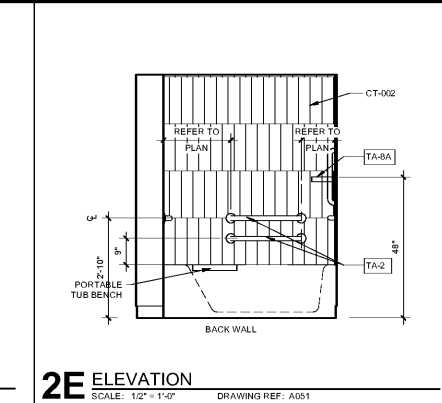
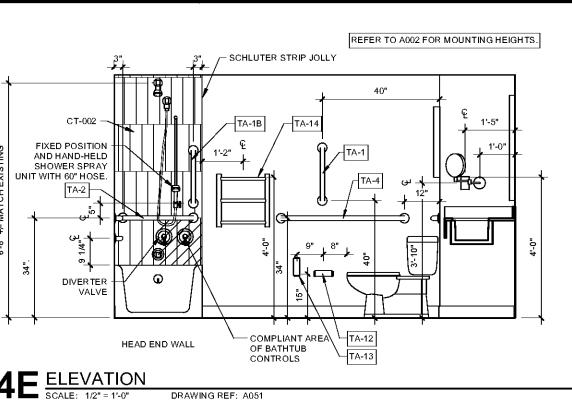
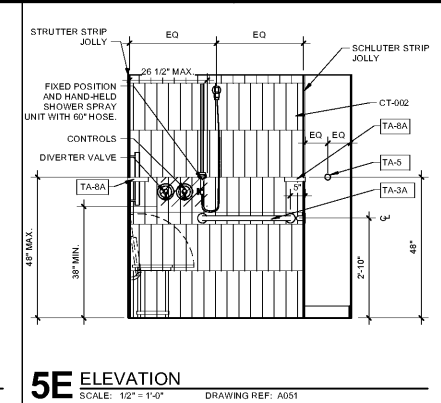
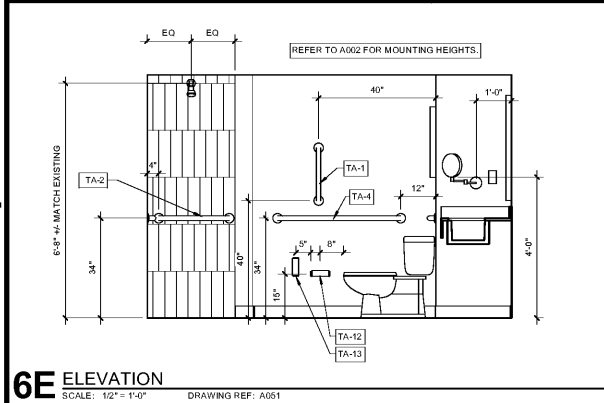




KEYNOTES

- 2.1 REMOVE DOOR THRESHOLD.
- 2.2 REMOVE FLOOR TILE AND SETTING BED.
- 2.5 REMOVE CONCRETE SLAB FOR NEW ELECTRICAL OR PLUMBING LINES.
- 2.6 REMOVE TOILET.
- 2.7 REMOVE VANITY COUNTERTOP, SUPPORTS, WOOD MILLWORK, TOILET PAPER HOLDER, SINK, AND FAUCET.
- 2.10 REMOVE VINYL WALL COVERING AND CORNER GUARDS (IF ANY). DO NOT ALLOW THE PAPER SURFACE OF THE DRYWALL TO BE TORN, PATCH AND REPAIR WALLS AS REQUIRED TO RECEIVE NEW FINISHES.
- 2.11 REMOVE ARTWORK AND SECURITY CLIPS.
- 2.12 REMOVE MIRRORS AND SECURITY CLIPS.
- 2.19 REMOVE DOOR & SALVAGE DOOR HARDWARE.
- 2.21 REMOVE WALL SCOFF, AND RELOCATE JUNCTION BOX PER RENOVATION DRAWINGS.
- 2.29 REMOVE DOOR, DOOR FRAME, AND SALVAGE DOOR HARDWARE.
- 2.30 REMOVE ALL GRAB BARS.
- 2.31 REMOVE PARTITION TO EXTENTS SHOWN.
- 2.37 REMOVE BASE.
- 2.52 REMOVE CLOSET SHELF AND ROD. RETAIN SAFE FOR REINSTALLATION.
- 2.56 REMOVE TUB SURROUND AND FIXTURES.
- 2.57 REMOVE SHOWER SURROUNDS AND FIXTURES.
- 2.58 REMOVE LIGHT SWITCH AND JUNCTION BOX.
- 2.59 REMOVE ELECTRICAL OUTLET, JUNCTION BOX.
- 8.1 PROVIDE NEW DOOR AND HARDWARE.
- 8.3 PROVIDE NEW DOOR, DOOR FRAME, AND HARDWARE.
- 9.3 PROVIDE NEW THRESHOLD.
- 9.8 REFINISHING OF TUBS BY OWNER. MATCHED NON-SLIP APPLICATION IS REQUIRED.
- 10.3 PROVIDE NEW TOILET ACCESSORIES.
- 10.4 PROVIDE NEW GRAB BARS.
- 12.7 INSTALL NEW GRAB BARS.
- 12.8 PROVIDE NEW GRAB BARS. REFER TO PLUMBING DRAWINGS.
- 22.4 PROVIDE NEW VANITY.
- 22.5 REFINISH PLUMBING ISLANDS.
- 26.1 PROVIDE NEW JUNCTION BOX FOR LIGHTED MIRROR. CONNECT TO EXISTING SWITCH.
- 26.2 NEW RECESSED LIGHT. REFER TO ELECTRICAL DRAWINGS.
- 26.7 PROVIDE NEW WALL SWITCH AND JUNCTION BOX.



Order Plans

WWW.IDDLINE.COM