

DOOR SCHEDULE - PUBLIC SPACE

DOOR NO.	TYPE	DOOR			FRAME			HARDWARE TYPE	RATING	COMMENTS	
		WIDTH	HEIGHT	MATERIAL	FINISH	TYPE	MATERIAL				FINISH
BD-1	F	3'-0"	6'-8"	EXISTING	PNT-018	EXISTING	EXISTING	PNT-006	-	EXIST	SUMMIT BOARDROOM DOOR
BD-2	F	3'-0"	6'-8"	EXISTING	ALUM	EXISTING	EXISTING	ALUM	-	EXIST	GREYSTONE BOARDROOM DOOR
BOH				EXISTING	PNT-018	EXISTING	EXISTING	PNT-006	-	EXIST	REFER TO MINUTES
BOH2	F	3'-0"	6'-8"	SCWD	PNT-018	A	HM	PNT-006	4AA030	20	EXISTING ADMINISTRATIVE OFFICE AND BACK OF HOUSE DOORS
BOH3	F	3'-0"	6'-8"	SCWD	PNT-018	A	HM	PNT-006	4AA030	20	DOOR TO BACK OF HOUSE OFFICES
BOH4	F	3'-0"	7'-0"	SCWD	PNT-018	A	HM	PNT-006	4AA030	20	LUGGAGE ROOM DOOR
BR-1	F	6'-0"	7'-0"	EXISTING	NOTE 1	EXISTING	EXISTING	NOTE 1	-	-	RECEPTION STORAGE
BR-2	F	3'-0"	7'-0"	EXISTING	PNT-004	EXISTING	EXISTING	PNT-004	-	-	JEFFERSON BALLROOM FROM PREFUNCTION CORRIDOR
BR-3	F	3'-0"	7'-0"	EXISTING	PNT-004	EXISTING	EXISTING	PNT-004	-	-	BALLROOM ENTRY DOORS
BR-4	F	3'-0"	7'-0"	EXISTING	PNT-004	EXISTING	EXISTING	PNT-004	-	-	BALLROOM DOORS TO SERVICE CORRIDOR
EL-1	FG	3'-0"	6'-8"	SCWD	PNT-006	A	HM	PNT-006	4AA030	0	EXECUTIVE LOUNGE ENTRY DOOR
EL-2	F	3'-0"	6'-8"	SCWD	PNT-006	A	HM	PNT-006	4AA030	0	EXECUTIVE LOUNGE RESTROOM DOOR
EL-3	F	3'-0"	6'-8"	SCWD	PNT-006	A	HM	PNT-006	4AA030	0	EXECUTIVE LOUNGE PANTRY DOOR
EL-4	F	3'-0"	6'-8"	EXISTING	PNT-006	EXISTING	EXISTING	PNT-006	-	EXIST	EXECUTIVE LOUNGE PANTRY TO CORRIDOR
EXT2	F	3'-0"	6'-8"	EXISTING	PNT-018	EXISTING	EXISTING	PNT-006	-	EXIST	EXTERIOR DOOR FROM BACK OF HOUSE OFFICE (FINISHES ON INTERIOR SIDE ONLY, EXTERIOR FINISHES TO REMAIN)
FT-1		3'-0"	7'-0"	EXISTING	PNT-018	EXISTING	EXISTING	PNT-006	-	REFER TO MINUTES	FITNESS DOOR
JP-1	F	6'-0"	7'-0"	EXISTING	NOTE 1	EXISTING	EXISTING	NOTE 1	-	-	JEFFERSON PREFUNCTION DOORS FROM PREFUNCTION CORRIDOR
JP-2	F	4'-0"	7'-0"	EXISTING	PNT-004	EXISTING	EXISTING	PNT-004	-	-	JEFFERSON PREFUNCTION STORAGE DOOR
JP-3	F	6'-0"	7'-0"	EXISTING	PNT-004	EXISTING	EXISTING	PNT-004	-	-	JEFFERSON PREFUNCTION STORAGE DOOR
MR-1	F	6'-0"	7'-0"	EXISTING	PNT-018	EXISTING	EXISTING	PNT-006	-	-	MEETING ROOM ENTRY DOOR
MR-2	F	3'-0"	7'-0"	EXISTING	PNT-018	EXISTING	EXISTING	PNT-006	-	EXIST	MEETING ROOM DOORS
MR-3	F	3'-0"	7'-0"	EXISTING	PNT-018	EXISTING	EXISTING	PNT-006	-	-	MEETING ROOM DOORS TO SERVICE CORRIDOR
PC-1		7'-0"		EXISTING	PNT-018	EXISTING	EXISTING	PNT-006	-	-	PREFUNCTION CORRIDOR FACING DOORS
PR-1	F	3'-0"	7'-0"	SCWD	PNT-018	A	HM	PNT-006	4AA030	0	PREFUNCTION RESTROOM DOOR
PR-2	F	3'-0"	7'-0"	EXISTING	PNT-018	EXISTING	EXISTING	PNT-006	-	EXIST	LOBBY RESTROOM DOORS
PS-2	F	3'-0"	7'-0"	EXISTING	PNT-018	EXISTING	EXISTING	PNT-006	-	EXIST	DOOR TO BACK OF HOUSE CORRIDOR
PS-3	F	6'-0"	6'-8"	EXISTING	PNT-018	EXISTING	EXISTING	PNT-006	-	-	DOOR TO BALLROOM SERVICE CORRIDOR
STO	F			EXISTING	PNT-018	EXISTING	EXISTING	PNT-006	-	-	PUBLIC SPACE STORAGE ROOM DOORS

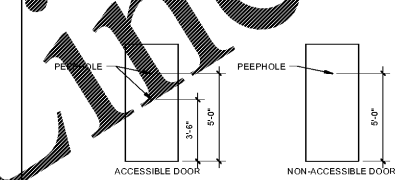
DOOR SCHEDULE - GUESTROOM

DOOR NO.	TYPE	DOOR			FRAME			HARDWARE TYPE	RATING	COMMENTS	
		WIDTH	HEIGHT	MATERIAL	FINISH	TYPE	MATERIAL				FINISH
COR1	(ZF)	7'-4"	6'-8"	WOOD	PNT-006	A	HOLLOW METAL	PNT-006	4AA030	006	ELEVATOR LOBBY
COR2	F	3'-0"	6'-8"	EXISTING	PNT-006	EXISTING	EXISTING	PNT-006	EXIST	007	ELECTRICAL ROOM
COR3	F	3'-0"	6'-8"	EXISTING	PNT-006	EXISTING	EXISTING	PNT-006	EXIST	007	LINEN ROOM
COR4	G	3'-0"	6'-8"	WOOD	PNT-006	EXISTING	EXISTING	PNT-006	EXIST	007	VENDING
GR1	F	3'-0"	6'-8"	WOOD	NOTE 1	EXISTING	EXISTING	NOTE 1	EXIST	001	GUESTROOM ENTRY DOOR
GR1A	F	3'-0"	6'-8"	WOOD	NOTE 1	A	HOLLOW METAL	NOTE 1	4AA030	001A	GUESTROOM ENTRY DOOR
GR2	FB	3'-2"	6'-8"	WOOD	PNT-004	A	WOOD	PNT-004	3AA030	002	GUESTROOM BATHROOM DOOR
GR2A	F	3'-0"	6'-8"	WOOD	PNT-004	A	HOLLOW METAL	PNT-004	4AA030	002A	GUESTROOM BATHROOM DOOR
GR3	F	4'-6"	6'-8"	EXISTING	PNT-004	EXISTING	EXISTING	PNT-004	EXIST	005	GUESTROOM CLOSE DOOR
GR3A	F	3'-0"	6'-8"	WOOD	PNT-004	A	HOLLOW METAL	PNT-004	4AA030	005A	GUESTROOM CLOSE DOOR
GR4	F	6'-8"	6'-8"	EXISTING	PNT-004	EXISTING	EXISTING	PNT-004	EXIST	004	GUESTROOM CONNECTOR DOOR EXISTING 2'-4" +/- WIDE DOOR
GR4A	F	6'-8"	6'-8"	WOOD	PNT-004	A	HOLLOW METAL	PNT-004	4AA030	004A	GUESTROOM CONNECTOR DOOR 3'-0" WIDE DOOR
GR4C	F	3'-0"	6'-8"	WOOD	PNT-004	A	HOLLOW METAL	PNT-004	4AA030	003	KING SUITE DOOR TO BEDROOM
GR4D	F	3'-0"	6'-8"	WOOD	PNT-004	A	HOLLOW METAL	PNT-004	4AA030	003	QUEEN SUITE DOOR TO BEDROOM
ST1	F	3'-0"	6'-8"	EXISTING	PNT-006	EXISTING	EXISTING	PNT-006	EXIST	007	STAIR TOWER 1
ST2	F	3'-0"	6'-8"	EXISTING	PNT-006	EXISTING	EXISTING	PNT-006	EXIST	007	STAIR TOWER 2

NOTES - DOOR SCHEDULE

- VERIFY EXISTING PARTITION THICKNESS PRIOR TO FABRICATING DOOR FRAME.
- PROVIDE EITHER WALL STOPS OR TRACK TYPE OVERHEAD STOPS AS REQUIRED. FLOOR STOPS ARE NOT ACCEPTABLE.
- DOORS SHOULD NOT BE UNDERCUT MORE THAN 3/4" ABOVE NEW FINISHED SURFACES.
- DOOR FRAMES AT INSULATED PARTITIONS SHALL RECEIVE INSULATION IN JAMB & HEAD CAVITY.
- ALL FRAMES & ANCHORS TO BE INSTALLED ACCORDING TO FRAME MANUFACTURER'S INSTRUCTIONS.
- ALL HM FRAMES TO BE FULLY WELDED, UNO.
- RATED OPENINGS SHALL RECEIVE UL RATED FRAME ASSEMBLY.
- PROVIDE 2" MINIMUM CLEAR BETWEEN JAMB & ADJACENT PARTITION. REFER TO ACCESSIBILITY DIAGRAMS FOR CODE-REQUIRED CLEARANCES AT OPENINGS.
- GENERAL CONTRACTOR TO REPLACE ALL PAINTED HINGES WITH NEW HINGES.
- GENERAL CONTRACTOR TO VERIFY IF EXISTING LOCKSETS COORDINATE, REKEY PER OWNER'S DIRECTIONS.

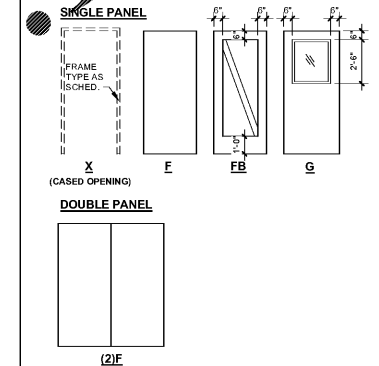
DOOR VIEW HEIGHTS



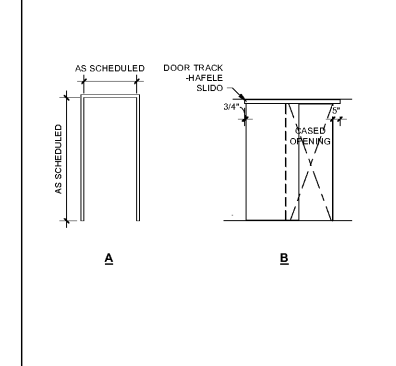
PROJECT  
**2.160425.0**  
**DOUBLETREE**  
**BIRMINGHAM**  
**ALABAMA**  
**CONVERSION**  
 8 PERIMTER PARK  
 SOUTH  
 BIRMINGHAM, AL  
 35243

NOTES:  
 1. PNT-006 ON CORRIDOR SIDE, PNT-004 ON ROOM SIDE AND JAMB. DO NOT PAINT LABEL.

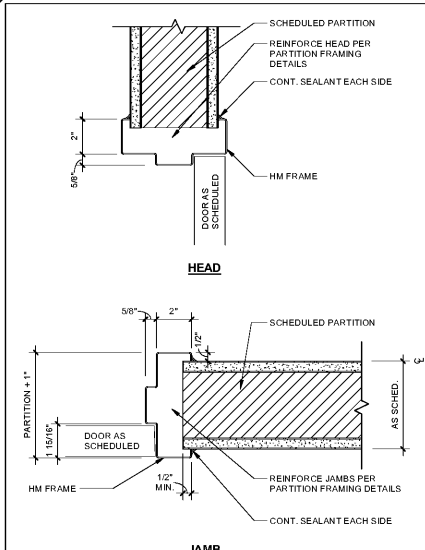
LEGEND - DOOR TYPES



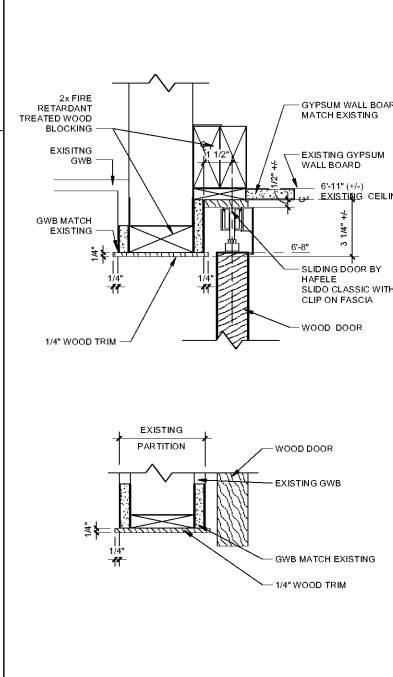
LEGEND - DOOR FRAME TYPES



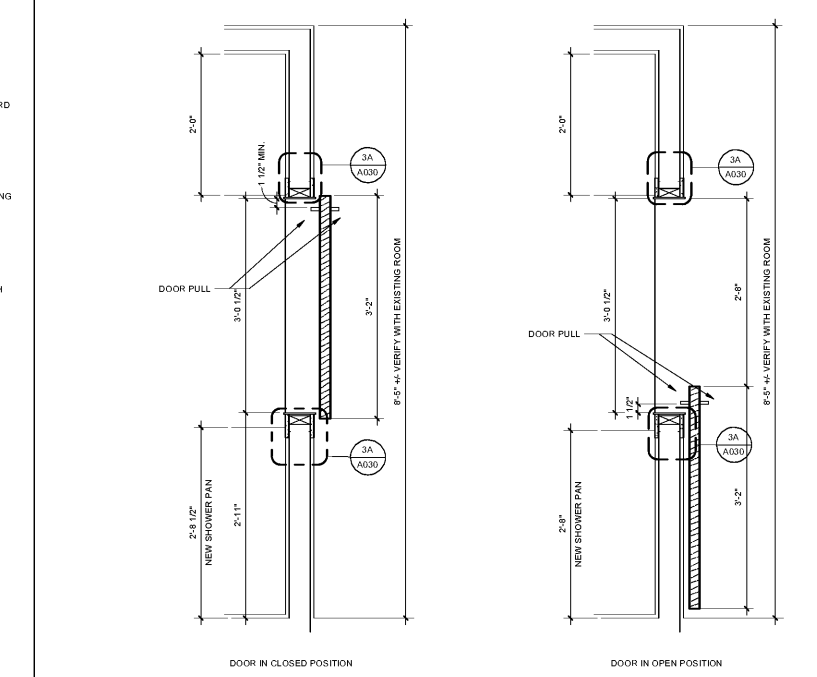
Order Plans @



4A DETAIL - HM FRAME @ GYP BD  
 SCALE: 3" = 1'-0"



3A JAMB DETAIL AT SLIDING DOOR  
 SCALE: 3" = 1'-0" DRAWING REF: A030



2A ENLARGED SLIDING DOOR PLAN  
 SCALE: 1" = 1'-0"



ISSUE  
**6/12/2017 -**  
**CONSTRUCTION SET**

DRAWING TITLE  
**DOOR, FRAME AND**  
**HARDWARE TYPES &**  
**SCHEDULES**

DRAWING NO.  
**A030**

Order Plans @

WWW.LDILINE.COM