

GUESTROOMS WITH COMMUNICATION FEATURES -
FIRE ALARM NOTES:

THESE CONTRACT DOCUMENTS CONTAIN NO ENGINEERING. THIS DRAWING DESCRIBES A DESIGN OF THE GUESTROOMS WITH COMMUNICATION FEATURES FIRE ALARM SYSTEM REQUIREMENTS. THE CONTRACTOR SHALL ASSUME RESPONSIBILITY FOR THE PORTION OF THE WORK, CONTRACTOR SHALL REDESIGN, REWORK, AND/OR PROVIDE HEARING IMPAIRED FIRE ALARM SYSTEM DEVICES THAT CONFORM TO DOJ 2010 ADA STANDARDS FOR ACCESSIBLE DESIGN, FEDERAL, STATE, AND LOCAL CODES.

GENERAL CONTRACTOR TO COORDINATE INSTALLATION OF FIRE ALARM DEVICES WITH FIRE ALARM SYSTEMS VENDOR.

FIRE ALARM SYSTEMS VENDOR TO PROVIDE ADDITIONAL DOCUMENTATION REQUIRED BY LOCAL MUNICIPALITY / AUTHORITY HAVING JURISDICTION AND SECURE REQUIRED FA PERMITS.

WHERE APPLICABLE, GENERAL CONTRACTOR & FIRE ALARM SYSTEMS VENDOR SHALL SURVEY THE EXISTING CONDITIONS AND DETERMINE THE NECESSARY REQUIREMENTS TO UPGRADE THE EXISTING GUESTROOM TO MEET THE DOJ 2010 ADA STANDARDS FOR ACCESSIBLE DESIGN.

CONVERSION FIRE ALARM REQUIREMENTS

- GUESTROOM FIRE ALARM ADDRESSABLE ANNUNCIATING DEVICES ARE CONNECTED TO BUILDING FIRE ALARM PANEL IN THE HOTEL LOBBY. THEY ARE ACTIVATED BY HAND-WIRED SMOKE DETECTORS, FIRE ALARM PULL STATION AND OTHER SIGNALING DEVICES LOCATED IN GUEST BUILDING CORRIDORS AND STAIRWELLS.
- SMOKE DETECTORS:
 - PROVIDE ADDRESSABLE SDS WITH BATTERY BACK-UP (EDWARDS 517 TCSB-C OR EQUAL) HARD-WIRED TO 120V POWER.
 - PROVIDE ADDITIONAL SDS DEVICES AS REQUIRED, INTER-CONNECTED TO PROVIDE NOTIFICATION THROUGHOUT GUESTROOM UNIT.
 - PROVIDE REMOTE STROBE & COMPONENTS PER SDS MFR TO LINK BATHROOMS TO GUESTROOM SDS.
- ADDRESSABLE ANNUNCIATING DEVICES:
 - PROVIDE ADDRESSABLE FIRE ALARM HORN-STROBE.
 - PROVIDE REMOTE FIRE ALARM STROBE DEVICES, CONNECTED TO BUILDING FIRE ALARM SYSTEM.

RENOVATION FIRE ALARM REQUIREMENTS

GENERAL CONTRACTOR & FIRE ALARM SYSTEMS VENDOR SHALL SURVEY THE EXISTING CONDITIONS AND DETERMINE THE EXISTING FIRE ALARM DEVICES AND SMOKE DETECTORS ARE ADDRESSABLE OR NON-ADDRESSABLE.

FIRE ALARM SYSTEMS VENDOR SHALL SURVEY EXISTING HOTEL FIRE ALARM PANEL AND DETERMINE IF UPGRADING THE PANEL IS REQUIRED.

ADDRESSABLE SYSTEM

- SMOKE DETECTORS:
 - PROVIDE ADDRESSABLE SDS WITH BATTERY BACK-UP (EDWARDS 517 TCSB-C OR EQUAL) HARD-WIRED TO 120V POWER.
 - PROVIDE ADDITIONAL SDS DEVICES AS REQUIRED, INTER-CONNECTED TO PROVIDE NOTIFICATION THROUGHOUT GUESTROOM UNIT.
 - PROVIDE REMOTE STROBE & COMPONENTS PER SDS MFR TO LINK BATHROOMS TO GUESTROOM SDS.
- ADDRESSABLE ANNUNCIATING DEVICES:
 - PROVIDE ADDRESSABLE FIRE ALARM HORN-STROBE.
 - PROVIDE REMOTE FIRE ALARM STROBE DEVICES PER PLAN, CONNECTED TO BUILDING FIRE ALARM SYSTEM THROUGH ORIGINAL FIRE ALARM HORN DEVICE WIRING.

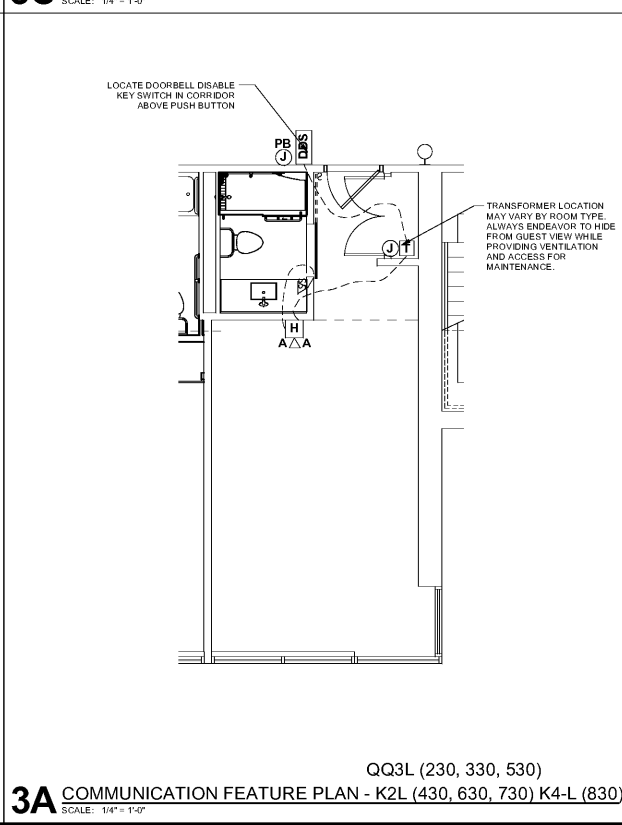
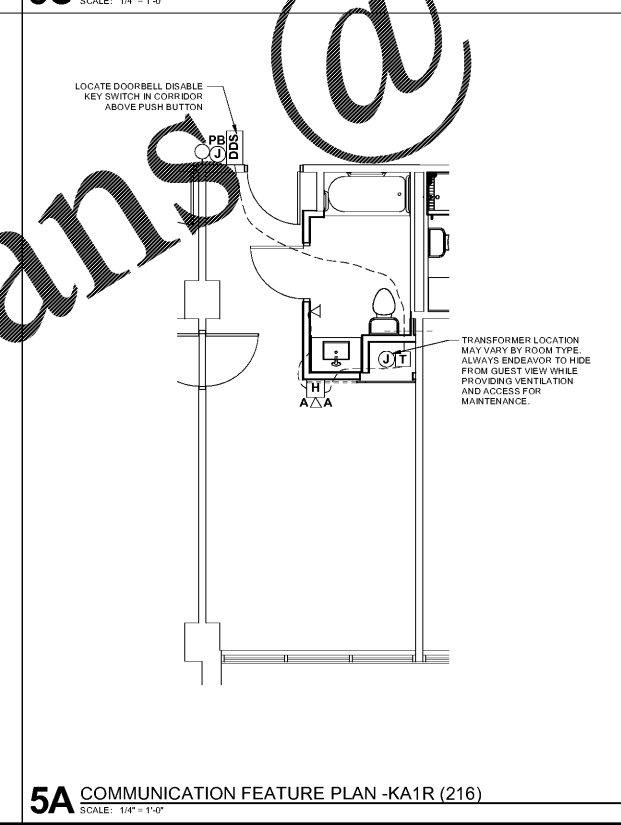
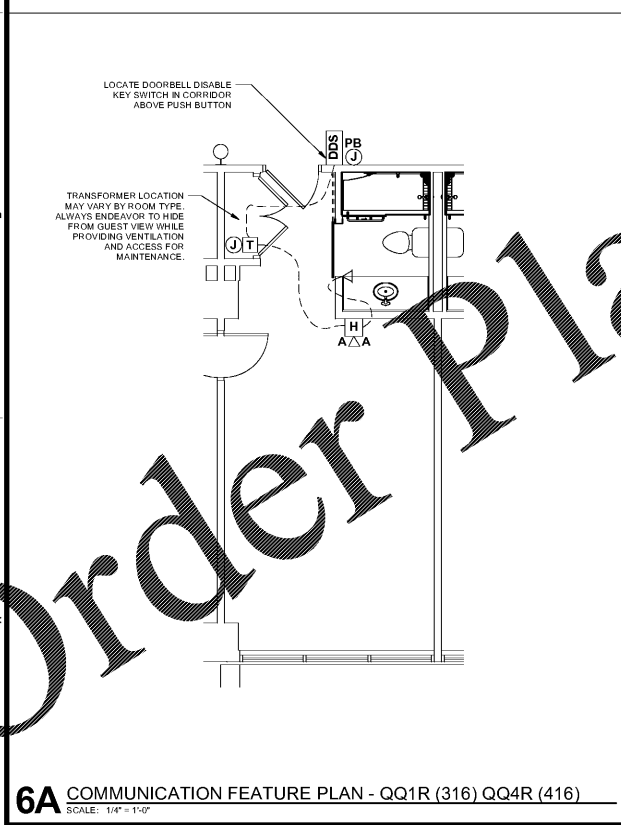
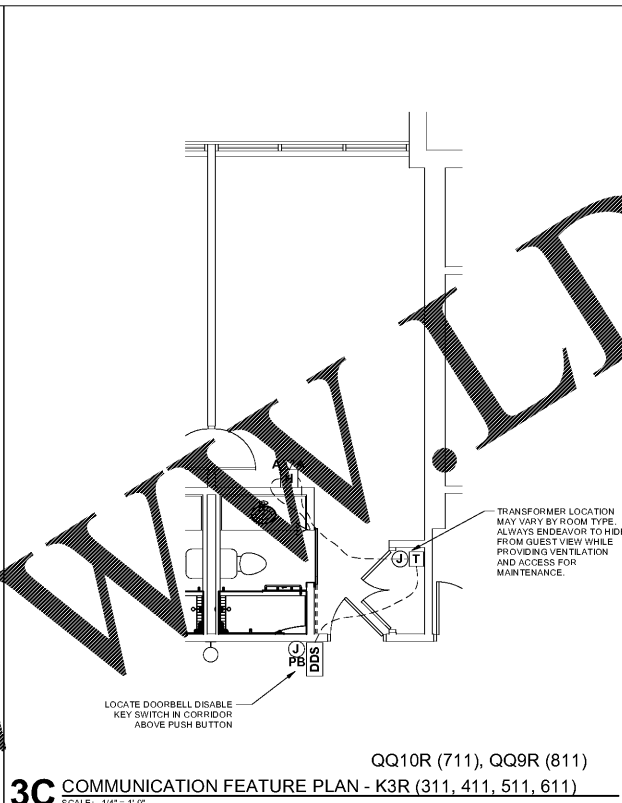
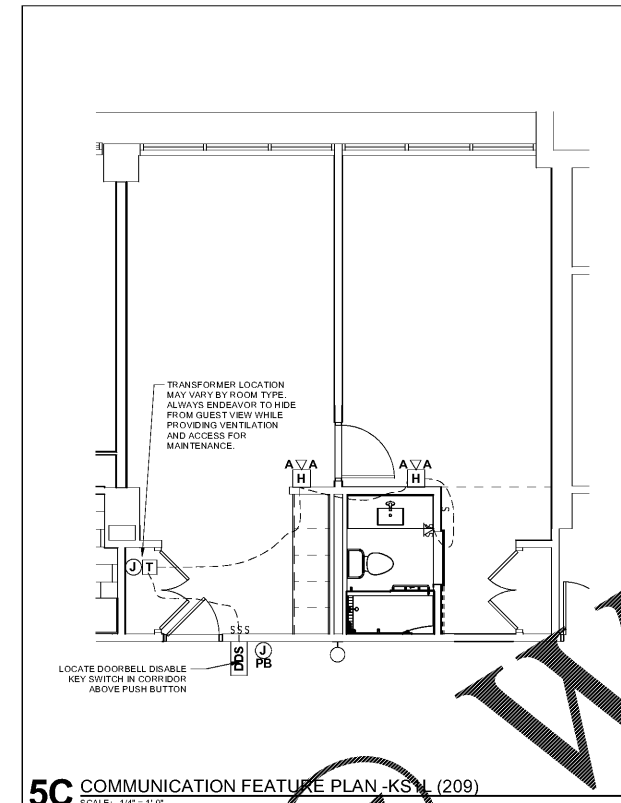
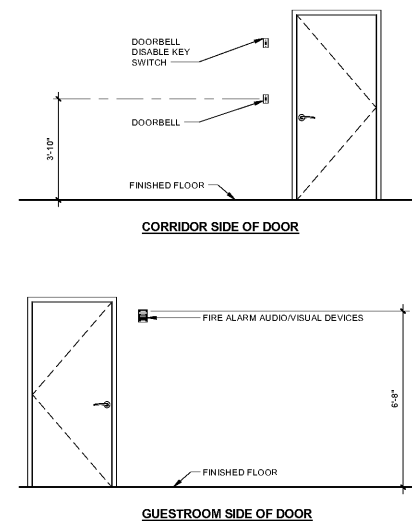
NON-ADDRESSABLE SYSTEM - ONLY LOCAL TO ALLOW NON-ADDRESSABLE SYSTEM TO REMAIN

- SMOKE DETECTORS:
 - PROVIDE SDS WITH BATTERY BACK-UP (EDWARDS 517 TCSB-C OR EQUAL) HARD-WIRED TO 120V POWER.
 - PROVIDE ADDITIONAL SDS DEVICES AS REQUIRED, INTER-CONNECTED TO PROVIDE NOTIFICATION THROUGHOUT GUESTROOM UNIT.
 - PROVIDE REMOTE STROBE & COMPONENTS PER SDS MFR TO LINK BATHROOMS TO GUESTROOM SDS.
- ADDRESSABLE ANNUNCIATING DEVICES:
 - PROVIDE ADDRESSABLE FIRE ALARM HORN-STROBE.
 - PROVIDE REMOTE FIRE ALARM STROBE DEVICE PER PLAN, CONNECTED TO BUILDING FIRE ALARM SYSTEM THROUGH ORIGINAL FIRE ALARM HORN DEVICE WIRING.

LEGEND - HI-CF

DEVICES FOR THE HEARING IMPAIRED COMPLIANT FEATURES:		
SYMBOL	DEVICE	REMARKS
J PB	BUTTON FOR DOOR SIGNAL	OUTSIDE DOOR ON STRIKE SIDE - 48" AFF FACTORY LABEL ON COVER PLATE
JT	2-GANG BOX WITH TRANSFORMER FOR DOOR BELL	MOUNT IN SOFFIT OR CABINET - PROVIDE ACCESS
DDS	DOORBELL DISABLE SWITCH	PROVIDE KEY SWITCH IN CORRIDOR ABOVE THE PUSH BUTTON TO TURN ON/OFF THE REQUIRED DOORBELL KIT. GANG WITH LIGHT SWITCH "DOORBELL DISABLE SWITCH" PLAQUE ON WALL BEHIND EVERY ENTRY DOOR, ROOM SIDE.
A H	HORN STROBE FOR DOOR SIGNAL (BEDROOMS)	MOUNT 80" AFF
▽	REMOTE STROBE DOOR SIGNAL (BATHROOMS)	MOUNT 80" AFF
HI-CF NOTES:		
PROVIDE ASSISTIVE LISTENING DEVICES IN THE REQUIRED NUMBER OF ROOMS PER BUILDING CODES AND DOJ 2010 ADA STANDARDS FOR ACCESSIBLE DESIGN.		
1. DISTRIBUTE HEARING IMPAIRED ROOMS AMONGST ALL CLASSES OF ROOMS INCLUDING SUITES.		
2. PLAQUES (EXCEPT AS NOTED) PROVIDE AS INDICATED. PLAQUES SHALL BE BLACK PHENOLIC WITH 1/4" WHITE ENGRAVED LETTERS.		
3. PROVIDE TELEPHONE WITH VOLUME CONTROL AND SIGNAL NOTIFICATION LIGHT.		
4. LOCATE TELEPHONES WITHIN 48" OF AN ELECTRICAL OUTLET.		
5. PROVIDE EDWARDS 700S-60 HOTEL ROOM ANNUNCIATOR KIT WITH ONE ADDITIONAL STROBE AT EACH BATHROOM IN HI ROOMS.		

TYP DEVICE MOUNTING HEIGHTS (Conversion)



ISSUE
6/12/2017 -
CONSTRUCTION SET

DRAWING TITLE
GUESTROOM WITH
COMMUNICATION
FEATURES ROOM
TYPES - PLANS

DRAWING NO.
A003

Order Plans @

WWW.LDWLINE.COM