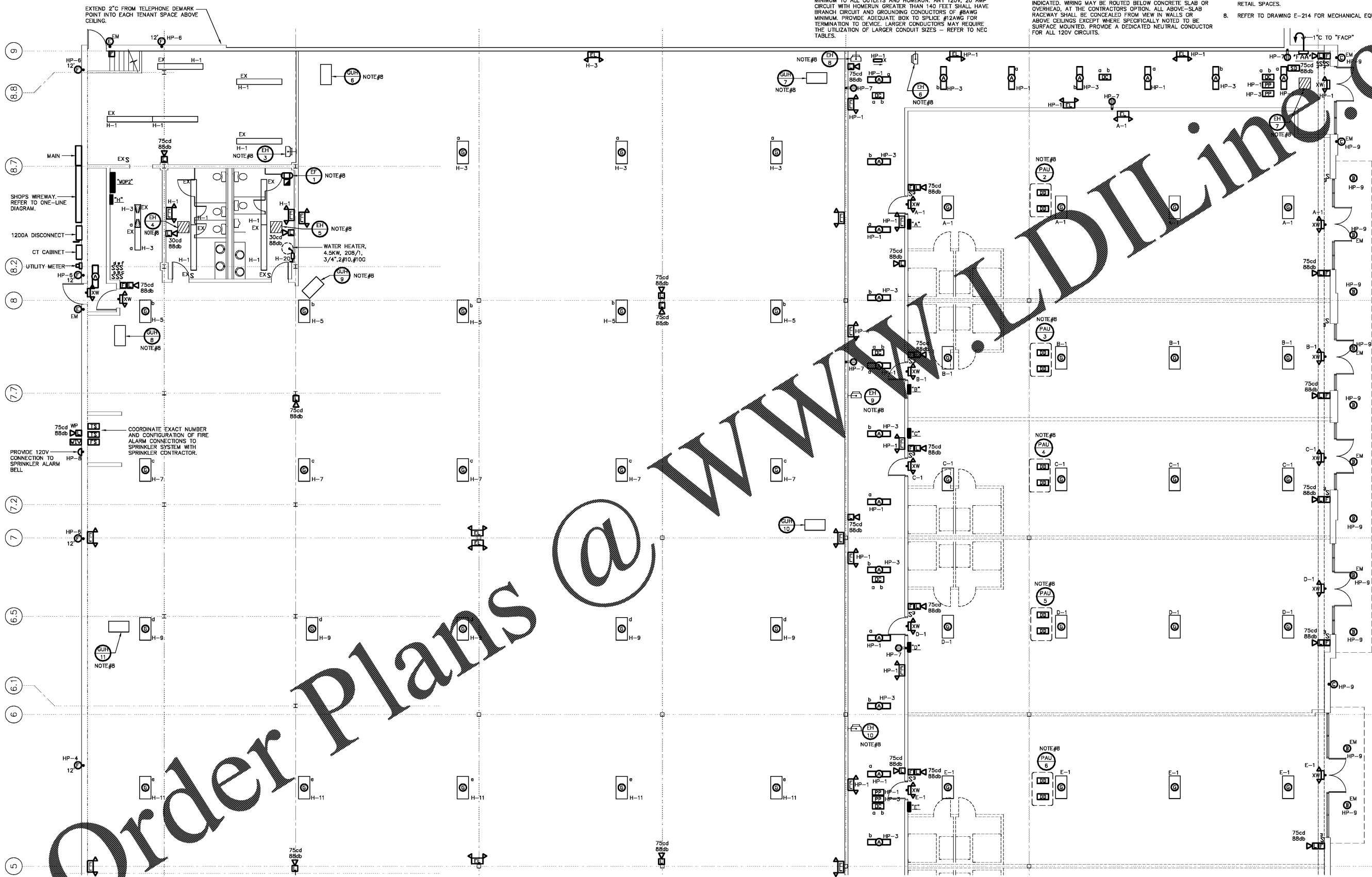
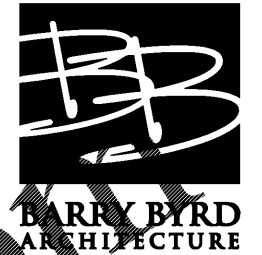


NOTES:

- ALL FIRE ALARM WIRING SHALL BE IN CONDUIT. MINIMUM SIZE SHALL BE 3/4".
- ALL REQUIRED DOCUMENTATION REGARDING THE DESIGN OF FIRE DETECTION, ALARM, AND COMMUNICATIONS SYSTEMS AND THE PROCEDURES FOR MAINTENANCE, INSPECTION, AND TESTING OF FIRE DETECTION, ALARM, AND COMMUNICATIONS SYSTEMS SHALL BE MAINTAINED AT AN APPROVED, SECURED LOCATION FOR THE LIFE OF THE SYSTEM.
- THE FIRE ALARM CONTRACTOR MUST BE CERTIFIED IN ACCORDANCE WITH THE TENNESSEE ALARM CONTRACTORS LICENSING ACT OF 1991, TAC TITLE 62 AND CHAPTER 32. CALL (615)741-9771 FOR ADDITIONAL INFORMATION.
- PROVIDE EXTERNAL 24VDC BATTERY CABINETS WITH CHARGERS AS REQUIRED TO ACHIEVE THE REQUIRED SYSTEM BATTERY CAPACITY. PROVIDE 20 AMPERE 120 VAC POWER TO EACH REQUIRED CABINET VIA A DEDICATED CIRCUIT. PROVIDE BRANCH CIRCUIT BREAKER WITH A RED HANDLE AND A LOCK-ON DEVICE TO PREVENT SHUT-OFF. LOCATE CABINETS IN UTILITY SPACES IN THE BUILDING, OUT OF SIGHT OF NORMAL OCCUPANTS.
- ALL 120V, 20 AMP CIRCUITS WITH HOMERUNS GREATER THAN 70 FEET SHALL HAVE CIRCUIT AND GROUNDING CONDUCTORS OF #10AWG AS MINIMUM. ANY 120V, 20 AMP CIRCUIT WITH OUTLETS GREATER THAN 100 FEET OF BRANCH CIRCUIT LENGTH SHALL HAVE CIRCUIT AND GROUNDING CONDUCTORS OF #10AWG MINIMUM TO ALL OUTLETS AND HOMERUN. ANY 120V, 20 AMP CIRCUIT WITH HOMERUN GREATER THAN 140 FEET SHALL HAVE BRANCH CIRCUIT AND GROUNDING CONDUCTORS OF #8AWG MINIMUM. PROVIDE ADEQUATE BOX TO SPLICE #12AWG FOR TERMINATION TO DEVICE. LARGER CONDUCTORS MAY REQUIRE THE UTILIZATION OF LARGER CONDUIT SIZES - REFER TO NEC TABLES.
- ALL 277V, 20 AMP CIRCUITS WITH HOMERUNS GREATER THAN 150 FEET SHALL HAVE CIRCUIT AND GROUNDING CONDUCTORS OF #10AWG AS MINIMUM. ANY 277V, 20 AMP CIRCUIT WITH OUTLETS GREATER THAN 220 FEET OF BRANCH CIRCUIT LENGTH SHALL HAVE CIRCUIT AND GROUNDING CONDUCTORS OF #10AWG MINIMUM TO ALL OUTLETS AND HOMERUN. ANY 277V, 20 AMP CIRCUIT WITH HOMERUN GREATER THAN 310 FEET SHALL HAVE BRANCH CIRCUIT AND GROUNDING CONDUCTORS OF #8AWG MINIMUM. PROVIDE ADEQUATE BOX TO SPLICE #12AWG FOR TERMINATION TO DEVICE. LARGER CONDUCTORS MAY REQUIRE THE UTILIZATION OF LARGER CONDUIT SIZES - REFER TO NEC TABLES.
- CONTRACTOR SHALL PROVIDE ALL REQUIRED BRANCH CIRCUIT RACEWAY AND CONDUCTORS FOR CONNECTION OF DEVICES INDICATED. WIRING MAY BE ROUTED BELOW CONCRETE SLAB OR OVERHEAD, AT THE CONTRACTOR'S OPTION. ALL ABOVE-SLAB RACEWAY SHALL BE CONCEALED FROM VIEW IN WALLS OR ABOVE CEILING EXCEPT WHERE SPECIFICALLY NOTED TO BE SURFACE MOUNTED. PROVIDE A DEDICATED NEUTRAL CONDUCTOR FOR ALL 120V CIRCUITS.
- "EX" ADJACENT TO A DEVICE INDICATES EXISTING DEVICE TO REMAIN. CONNECT TO NEW CIRCUITRY AS SHOWN.
- UNLESS OTHERWISE NOTED, COMPLETELY REMOVE ALL EXISTING SWITCHBOARDS, PANELBOARDS, ELECTRICAL DEVICES, LIGHTING FIXTURES AND ELECTRICAL CONNECTIONS TO ALL EXISTING MECHANICAL AND PLUMBING EQUIPMENT. COORDINATE DEMOLITION SCOPE WITH ARCHITECTURAL PLANS. COMPLETELY REMOVE UNNECESSARY WIRING, CONDUIT, SUPPORTS, ETC. WHERE CIRCUITS SERVE DEVICES WHICH ARE TO REMAIN, MAINTAIN POWER TO REMAINING DEVICES BY EXTENDING EXISTING CIRCUITRY TO NEW PANELBOARDS. TYPICAL ALL WORK IN EXISTING BUILDING, THIS DOES NOT APPLY TO EXISTING PARKING LOT SITE LIGHTING WHICH SHALL REMAIN. SOME OF THE EXISTING FLUORESCENT HIGH BAY LIGHTING FIXTURES SHALL BE UTILIZED AS TEMPORARY LIGHTING IN TENANT RETAIL SPACES.
- REFER TO DRAWING E-214 FOR MECHANICAL EQUIPMENT SCHEDULES.



1 FLOOR PLAN
A-112 1/8" = 1' - 0"
NORTH BUILDING NORTH



BARRY BYRD ARCHITECTURE
P.O. Box 5482
Knoxville, TN 37928
(865) 687-6500

Sent:

ENGINEERING SERVICES GROUP, INC.
CONSULTING ENGINEERS
900 EAST HILL AVE. SUITE 350
KNOXVILLE, TENNESSEE 37915
(865) 522-0355
PROJECT NO. 15688

THIS DRAWING IS THE PROPERTY OF BARRY BYRD ARCHITECTURE. ANY USE OR REPRODUCTION IN PART OR IN WHOLE IS PROHIBITED WITHOUT THE EXPRESSED WRITTEN CONSENT OF BARRY BYRD ARCHITECTURE.

Project Name:
GERMANTOWN2

Drawn By:
MWE

Revisions:

No.	DATE	DESCRIPTION

Project Title:

RETAIL SPACE

Poplar Avenue & Exeter Road

Location:
Germantown, TN

Sheet Contents:
General Floor Plan

Date:
November 11, 2016

Sheet Number:
E-112

Order Plans @