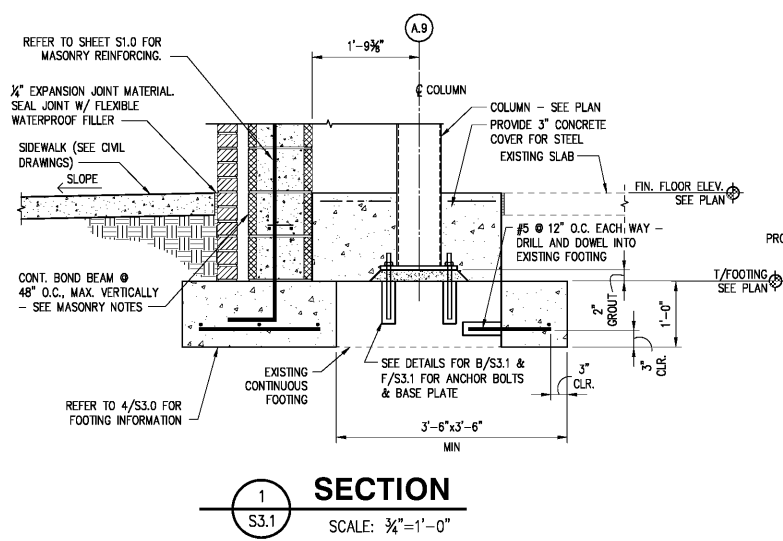
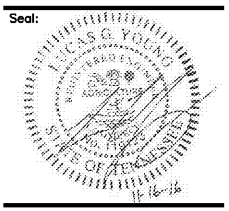
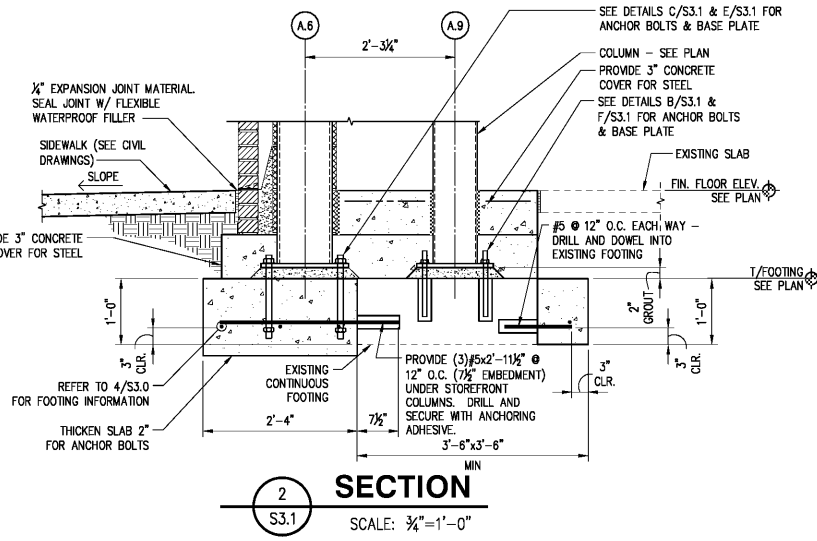


**BARRY BYRD
ARCHITECTURE**

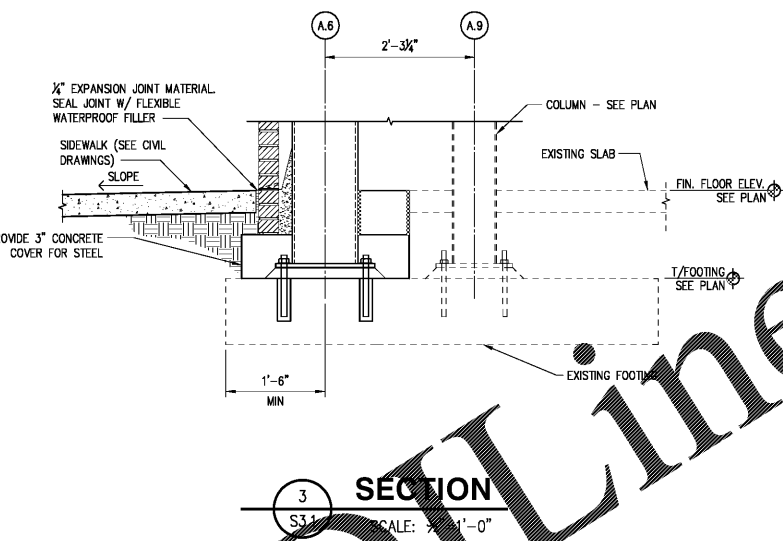
P.O. Box 5482
Knoxville, TN 37928
(865) 687-6500



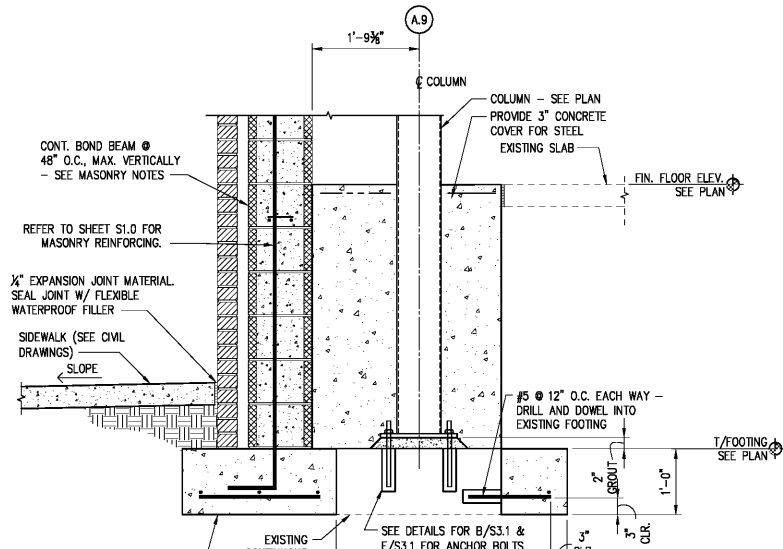
SECTION 1
S3.1 SCALE: 3/4"=1'-0"



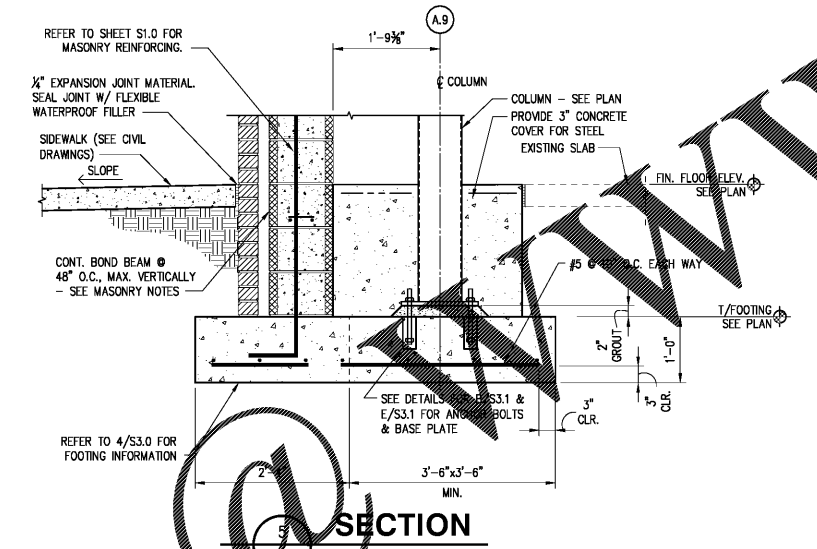
SECTION 2
S3.1 SCALE: 3/4"=1'-0"



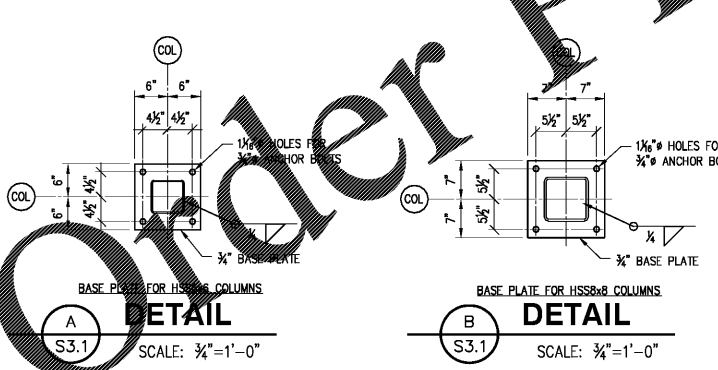
SECTION 3
S3.1 SCALE: 3/4"=1'-0"



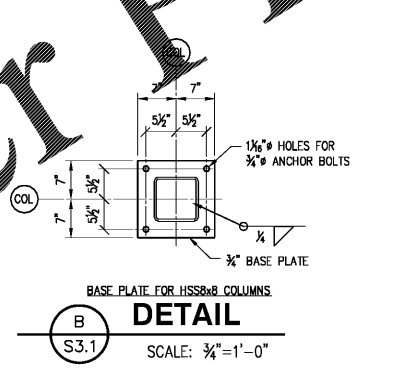
SECTION 4
S3.1 SCALE: 3/4"=1'-0"



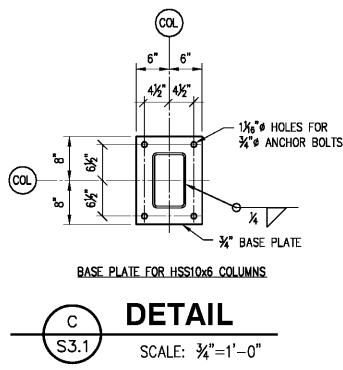
SECTION 5
S3.1 SCALE: 3/4"=1'-0"



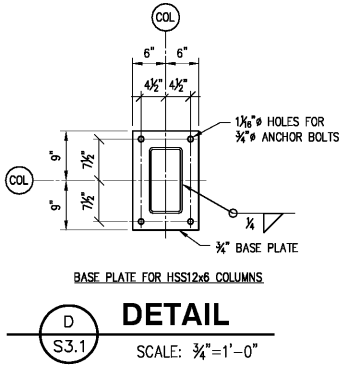
DETAIL A
S3.1 SCALE: 3/4"=1'-0"



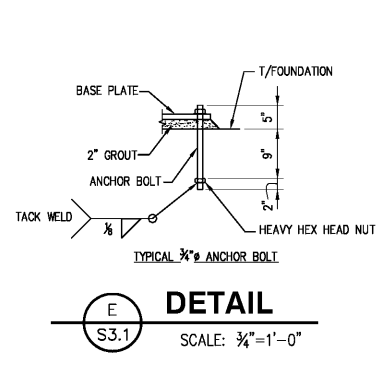
DETAIL B
S3.1 SCALE: 3/4"=1'-0"



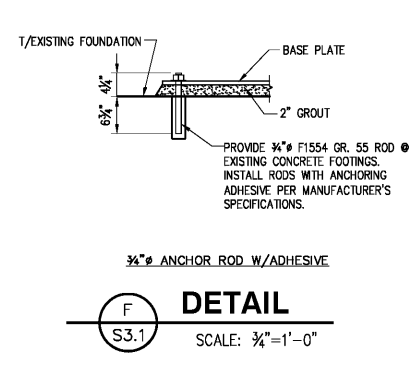
DETAIL C
S3.1 SCALE: 3/4"=1'-0"



DETAIL D
S3.1 SCALE: 3/4"=1'-0"



DETAIL E
S3.1 SCALE: 3/4"=1'-0"



DETAIL F
S3.1 SCALE: 3/4"=1'-0"

THIS DRAWING IS THE PROPERTY OF BARRY BYRD ARCHITECTURE. ANY USE OR REPRODUCTION IN PART OR IN WHOLE IS PROHIBITED WITHOUT THE EXPRESSED WRITTEN CONSENT OF BARRY BYRD ARCHITECTURE.

Project Name:
GERMANTOWN2

Drawn By:
SJF

Revisions:

No.	DATE	DESCRIPTION

Project Title:

**RETAIL
SPACE**

Poplar Avenue &
Exeter Road

Location:
Germantown, TN

Sheet Contents:
**Foundation
Sections &
Details**

Date:
November 04, 2016

Sheet Number:
S3.1

Order Plans

WWW.LDILine.com