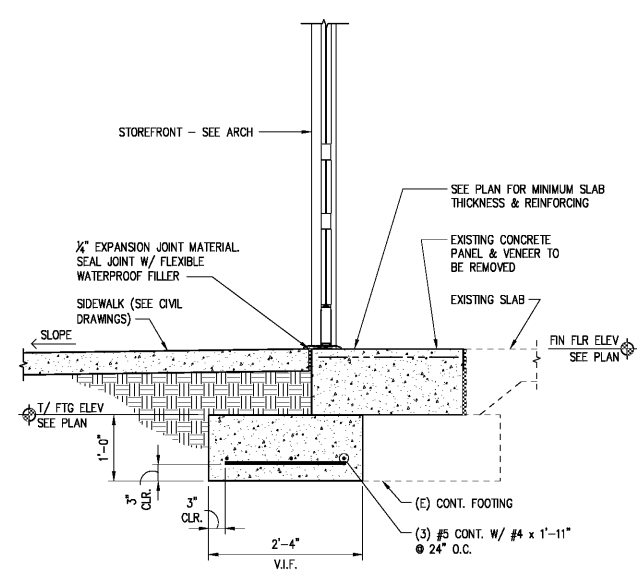
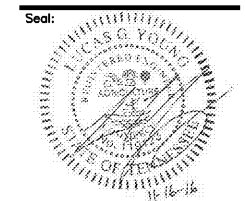
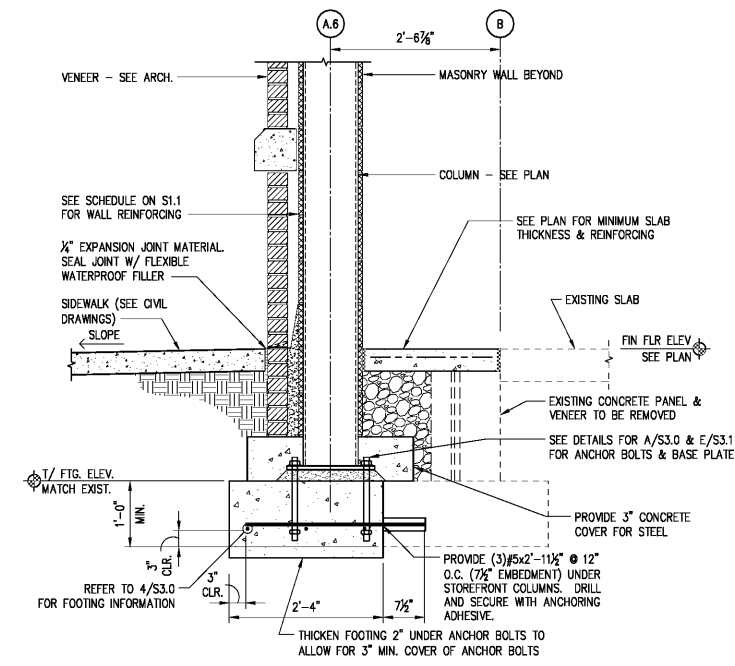


**BARRY BYRD ARCHITECTURE**

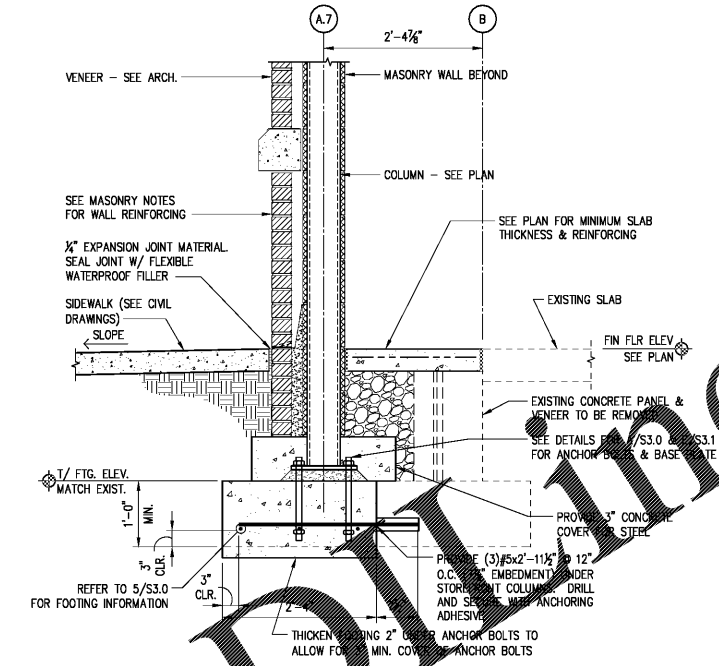
P.O. Box 5482  
 Knoxville, TN 37928  
 (865) 687-6500



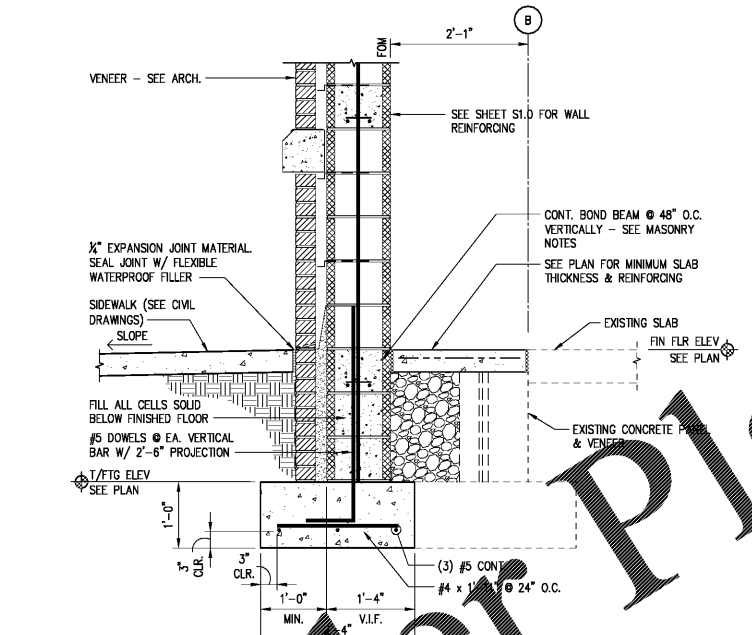
**1 SECTION**  
 S3.0 SCALE: 3/4"=1'-0"



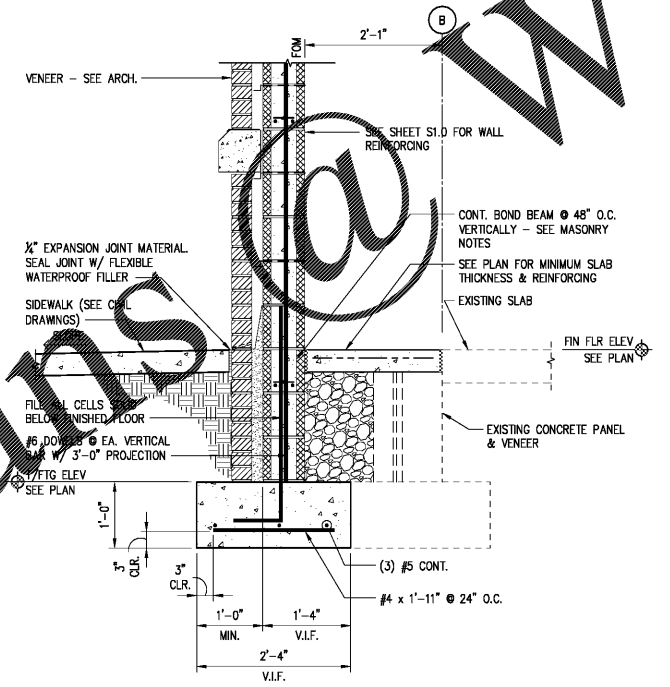
**2 SECTION**  
 S3.0 SCALE: 3/4"=1'-0"



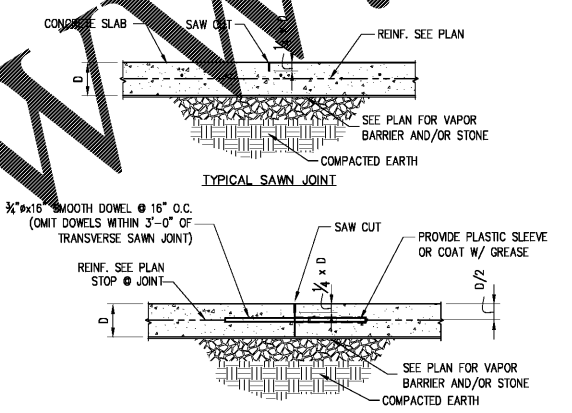
**3 SECTION**  
 S3.0 SCALE: 3/4"=1'-0"



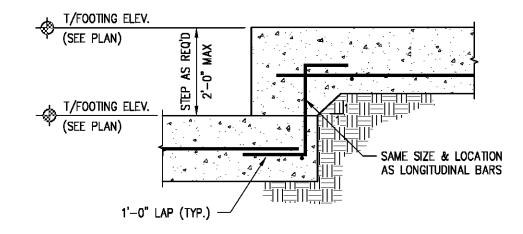
**4 SECTION**  
 S3.0 SCALE: 3/4"=1'-0"



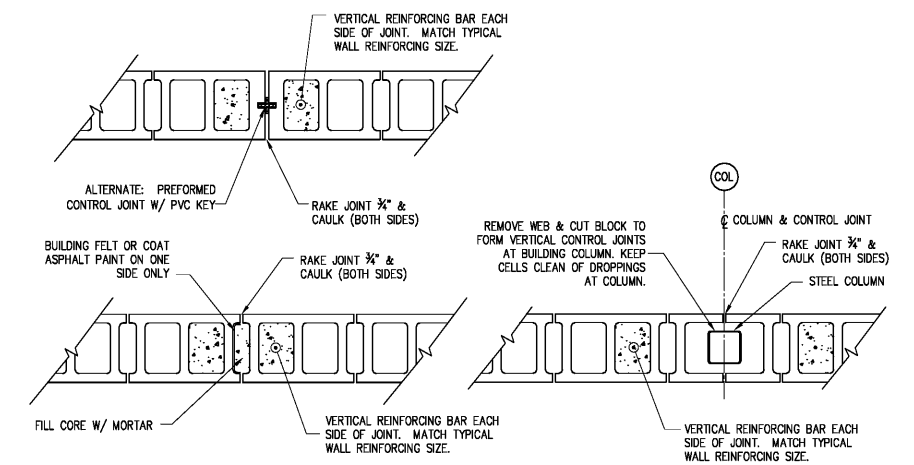
**5 SECTION**  
 S3.0 SCALE: 3/4"=1'-0"



**A TYPICAL SLAB JOINT DETAILS**  
 S3.0 NTS



**B DETAIL**  
 S3.0 SCALE: 3/4"=1'-0"



**C TYPICAL CONTROL JOINT IN CMU WALLS**  
 S3.0 NTS

THIS DRAWING IS THE PROPERTY OF BARRY BYRD ARCHITECTURE. ANY USE OR REPRODUCTION IN PART OR IN WHOLE IS PROHIBITED WITHOUT THE EXPRESSED WRITTEN CONSENT OF BARRY BYRD ARCHITECTURE.

Project Name:  
**GERMANTOWN2**

Drawn By:  
**SJF**

Revisions:

No.	DATE	DESCRIPTION

Project Title:

# RETAIL SPACE

Poplar Avenue &  
 Exeter Road

Location:  
**Germantown, TN**

Sheet Contents:  
**Foundation Sections & Details**

Date:  
 November 04, 2016

Sheet Number:  
**S3.0**

Order Plans @ www.lgyoung.com