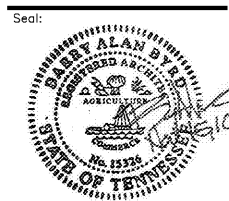




**BARRY BYRD ARCHITECTURE**

P.O. Box 5482  
Knoxville, TN 37928  
(865) 687-6500



THIS DRAWING IS THE PROPERTY OF BARRY BYRD ARCHITECTURE. ANY USE OR REPRODUCTION IN PART OR IN WHOLE IS PROHIBITED WITHOUT THE EXPRESSED WRITTEN CONSENT OF BARRY BYRD ARCHITECTURE.

Project Name:  
**GERMANTOWN2**

Drawn By:  
**RAS**

Revisions:

No.	DATE	DESCRIPTION

Project Title:

# RETAIL SPACE

Poplar Avenue &  
Exeter Road

Location:  
**Germantown, TN**

Sheet Contents:  
**Existing Wall Section**

Date:  
**October 28, 2016**

Sheet Number:  
**A-320**

NOTE:  
STRUCTURE FROM COLUMN LINE B TO THE FRONT OF THE BUILDING TO BE REMOVED. SEE DEMOLITION PLAN AND STRUCTURAL.

SLATE SHINGLES (6" EXPOSURE) w/ALUMINUM MOISTURE BARRIER BETWEEN COURSES, TYP.

30# FELT

NOTE: ALL METAL SURFACES TO RECEIVE TREATED LUMBER & PLYWOOD SHALL BE COMPLETELY COVERED W/1 LAYER OF DUCT TAPE

3/4" FIRE RETARDANT TRT'D PLYWD DECK'G w/1-1/2"x#6 S.S.SELF TAPPING SCREWS @ 8" o.c., TYP.

CONT. STL' ANGLE @ EDGE OF MTL' DECK'G, SEE STRUCT.

11"x3-5/8"x1-5/8" MTL STUD BRACKET @ EA. RAFTER w/2 SELF TAPPING SCREWS (SEE SIZES ABOVE) & 2 "RAMSET" FASTENERS INTO CONT. ANGLE

6"x3-1/2"x6" CONT. STL' ANGLE; WELD TO JOIST

DORMER BEYOND

6" MTL. RAFTERS @ 16" o.c. w/CONT. RUNNER "RAMSET" FASTENERS INTO CONT. ANGLE @ 2" o.c.; SEE NOTE ABOVE

CONT. 6" MTL. CH. RAFTER BOT. EDGE BRACE @ MID SPAN w/2 S.T. SCREWS/RAFTER, TYP

CONT. 7"x4"x3/8" STL' ANGLE - WELD TO 1/2" IN CONCRETE PANEL; SEE STRUCT.

BRICK TYPE II

DOVETAIL ANCHOR SLOTS @24" o.c.

BRICK TYPE I

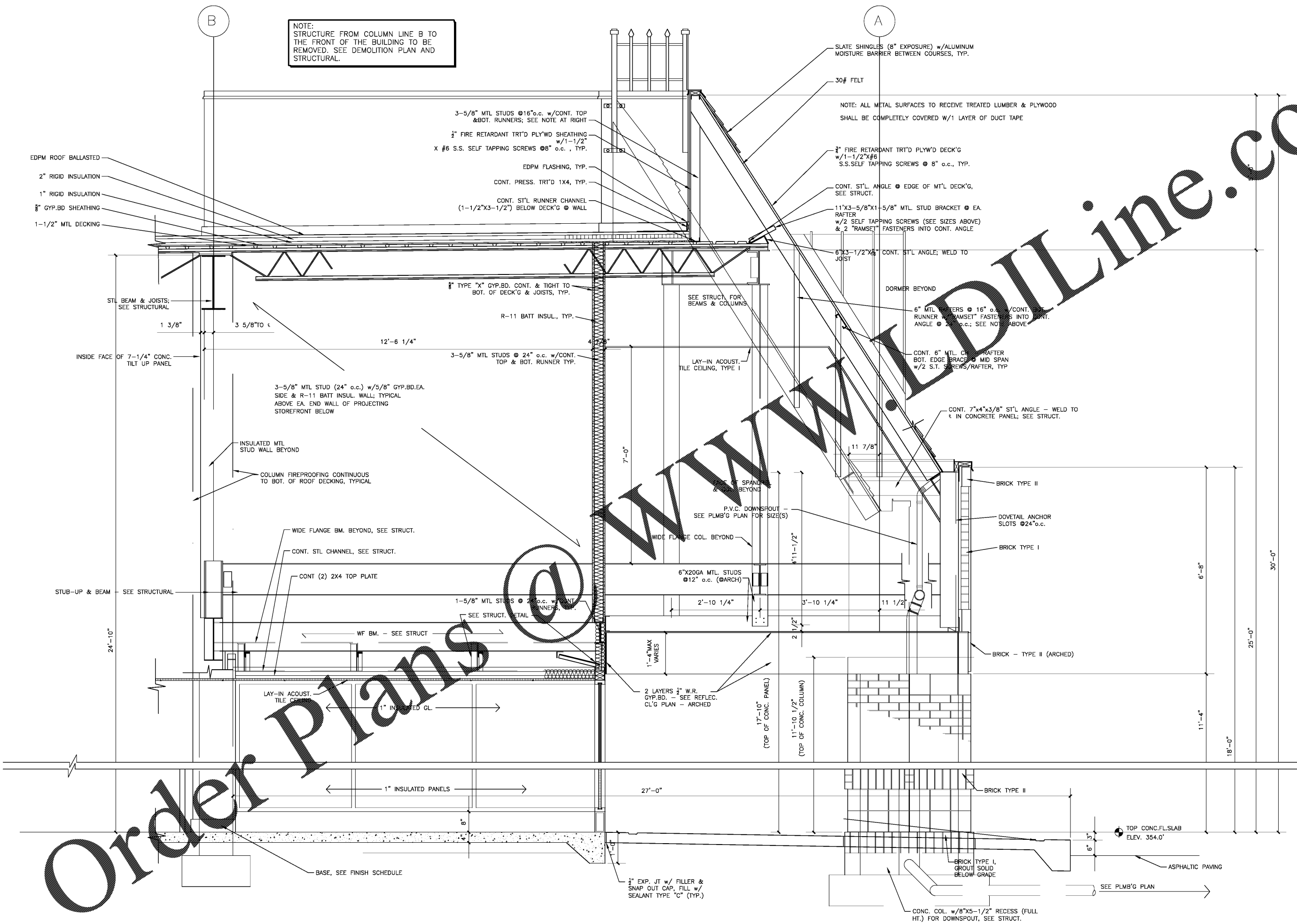
BRICK - TYPE II (ARCHED)

BRICK TYPE II

BRICK TYPE I, GROUT SOLID BELOW GRADE

CONC. COL. w/8"x5-1/2" RECESS (FULL HT.) FOR DOWNSPOUT, SEE STRUCT.

**1 EXISTING SECTION AT FRONT WALL**  
3/4" = 1' - 0"



Order Plans @