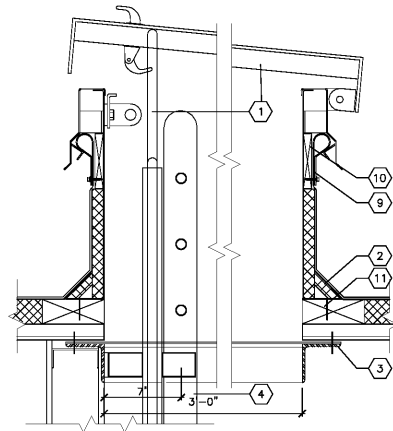
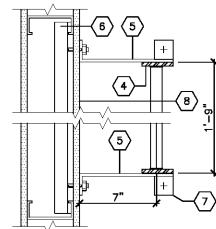


LADDER & SCUTTLE DETAIL



6 SECTION  
SCALE 1 1/2"=1'-0"



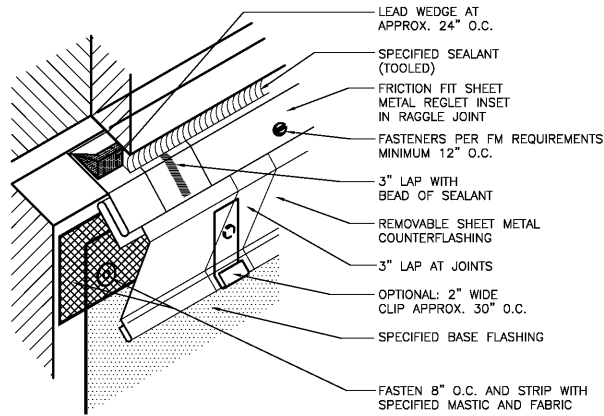
7 PLAN  
SCALE 1 1/2"=1'-0"

NOTES: COORDINATE JOIST SPACING TO CLEAR LADDER AND ROOF SCUTTLE.

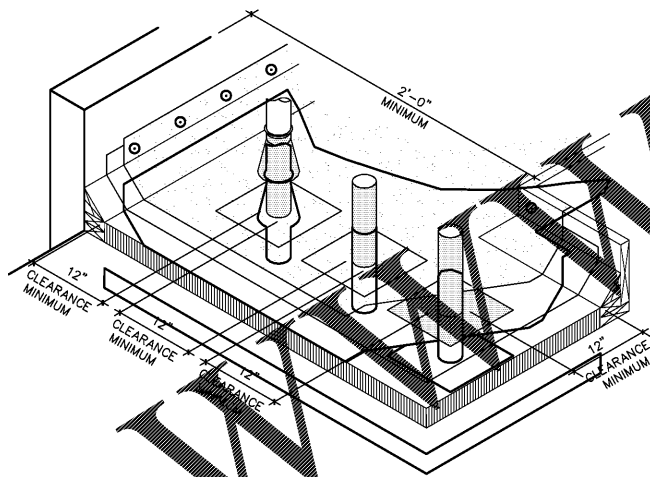
O.S.H.A. LADDER CLEARANCES MUST BE MET-NO OBSTRUCTIONS IN AREAS BELOW ROOF HATCH.

PROVIDE SAFTY CAGE IF LADDER EXCEEDS 20'-0" IN HEIGHT.

- KEYED NOTES**
- 1 ROOF SCUTTLE - 2'-6" X 3'-0" TYPE "S" WITH "LADDER-UP" SAFETY POST MODEL 2 BY BILCO CO. SECURE SCUTTLE TO ROOF STRUCTURAL STEEL WITH THRU BOLTS ACCORDING TO MANUFACTURER'S DIRECTIONS. HINGE PINS ARE TO BE WELDED NON-REMOVEABLE.
  - 2 STANDARD 1" FIBER CANT, BUILT UP ROOFING, AND COUNTER FLASHING (AS REQUIRED).
  - 3 3-1/2" X 3-1/2" X 1/4" ANGLED WELDED FRAME. EXTEND AND SECURE TO BUILDING ROOF STRUCTURE AS REQUIRED.
  - 4 2-1/2" X 3/8" FLAT STEEL BAR SIDE RAILS, AND 1" Ø STEEL RUNGS PUNCHED INTO RAILS 12" CENTERS AND WELDED. RUNGS ARE TO BE KNURLED OR DIMPLED TREATED TO MINIMIZE SLIPPING AND ARE TO BE FREE OF SHARP EDGES.
  - 5 PROVIDE 2-1/2" X 3/8" THICK FLAT BENT STEEL BRACKETS AT MAX. 4'-0" CENTERS. WELD TO SIDE RAILS WELD TOP TO STEEL ANGLE FRAME.
  - 6 AT METAL STUD WALL, PROVIDE 1-1/2" C.R. STEEL REINFORCING CHANNELS WITH WELDED 3/8" THRU BOLTS TO RECEIVE BRACKETS. CUT STUD FLANGES TO RECEIVE REINFORCING CHANNEL. AT MASONRY, FASTEN BRACKETS WITH 3/8" X 2-3/4" WEDGE "RED HEAD" OR "WOLLY" ANCHOR BOLTS.
  - 7 PROVIDE 2-1/2" X 2-1/2" X 3/16" WELDED CLIP ANGLES SECURED TO CONCRETE FLOOR WITH 1/2" X 2-3/4" WEDGE "RED HEAD" OR "WOLLY" ANCHOR BOLTS.
  - 8 FRP WALL PANELS, FLOOR TO ROOF.
  - 9 GASKETED FASTENER.
  - 10 1"X ROUGH PINE NAILER TREATED WITH CUPRINOL.
  - 11 WOOD NAILER FASTENED TO ROOF DECK; THICKNESS TO MATCH TOP OF ROOF DECK INSULATION.

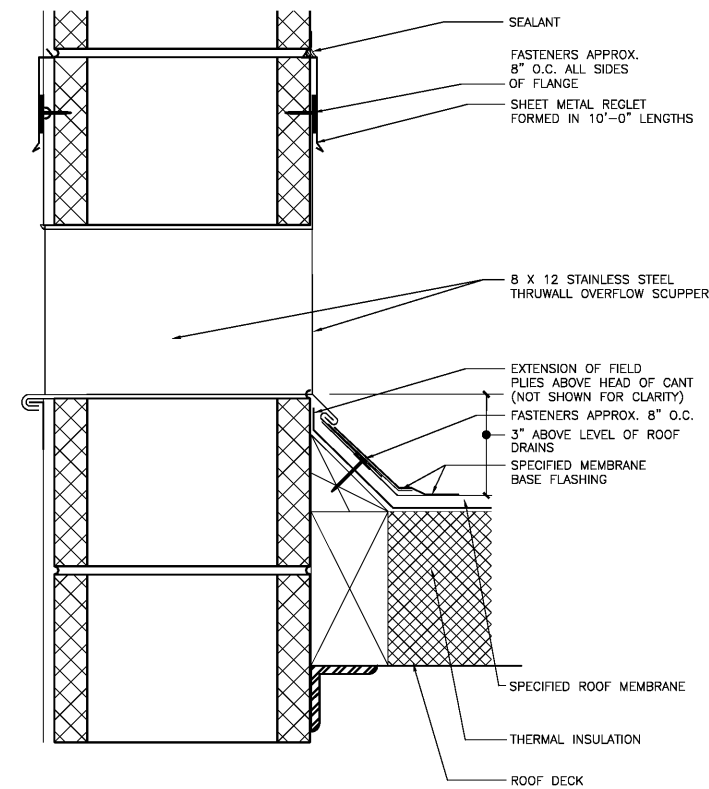


3 Inset Reglet & Counterflashing  
A-135 N.T.S.

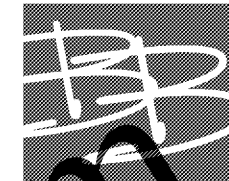


4 Guide For Clearances Between Pipes/Walls/Curbs  
A-135 N.T.S.

1 Not Used  
A-135 N.T.S.



2 Conductor Head & Through Wall Overflow Scupper  
A-135 N.T.S.



**BARRY BYRD ARCHITECTURE**

P.O. Box 5482  
Knoxville, TN 37928  
(865) 687-6500

Seal:



THIS DRAWING IS THE PROPERTY OF BARRY BYRD ARCHITECTURE. ANY USE OR REPRODUCTION IN PART OR IN WHOLE IS PROHIBITED WITHOUT THE EXPRESSED WRITTEN CONSENT OF BARRY BYRD ARCHITECTURE.

Project Name:  
**GERMANTOWN2**

Drawn By:  
**MMB**

Revisions:

No.	DATE	DESCRIPTION

Project Title:

**RETAIL SPACE**

Poplar Avenue &  
Exeter Road

Location:  
**Germantown, TN**

Sheet Contents:  
**Roof & Flashing Details**

Date:  
October 28, 2016

Sheet Number:  
**A-135**

Order Plans

WWW.LDILine.com