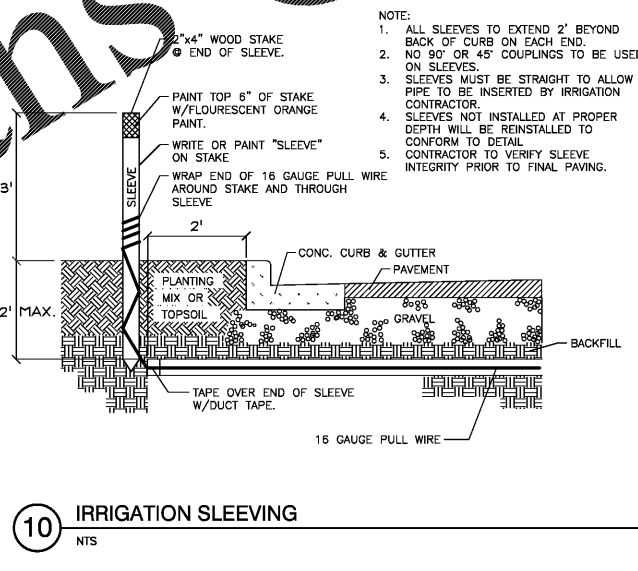
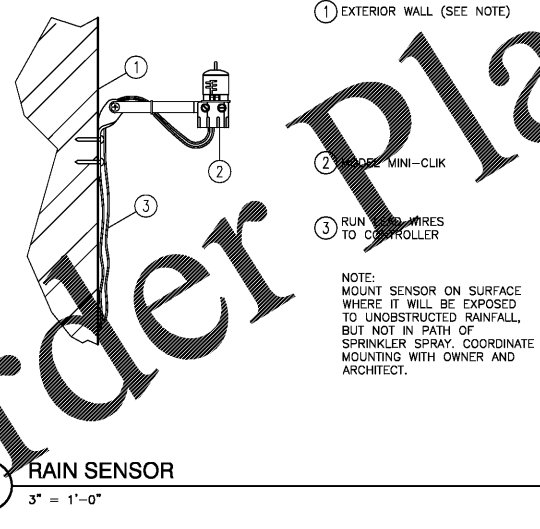
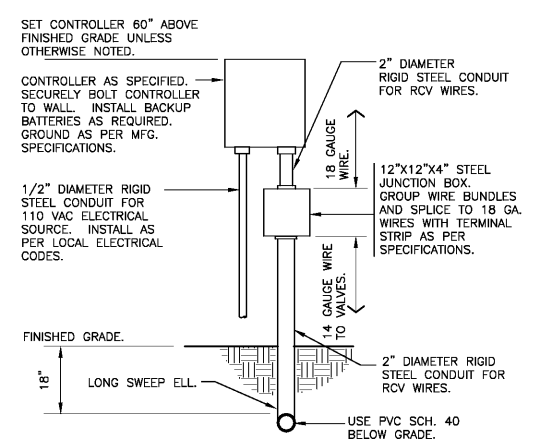
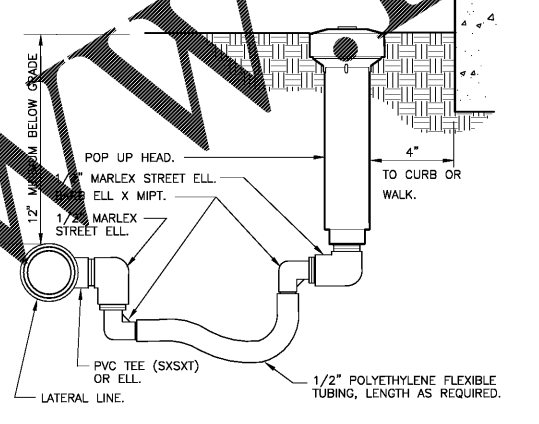
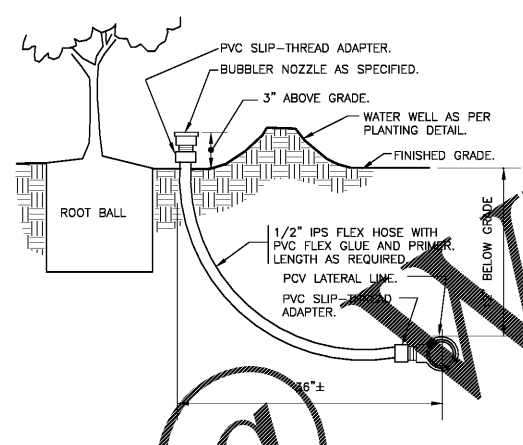
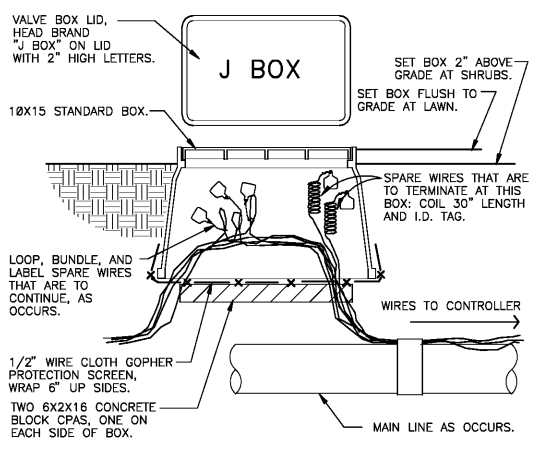
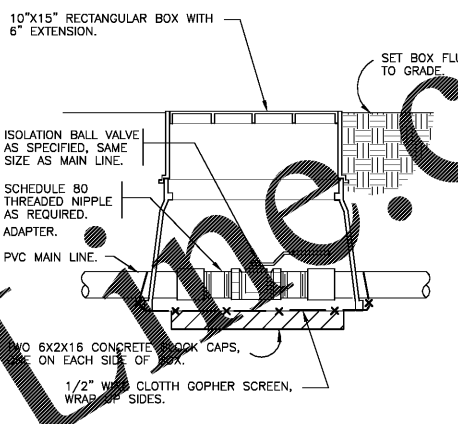
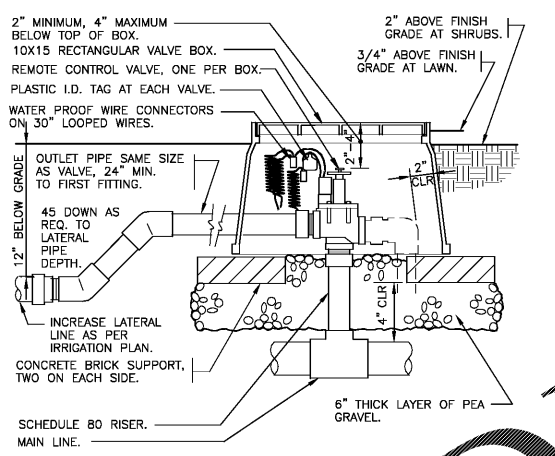
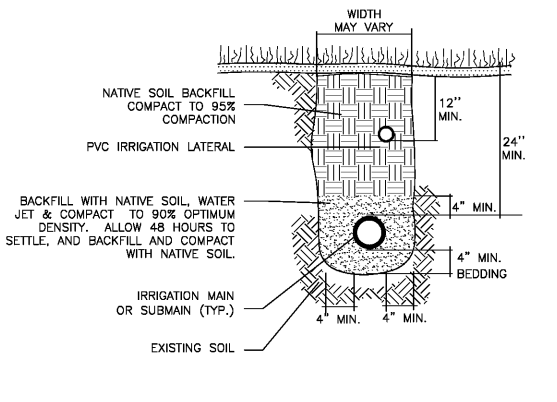
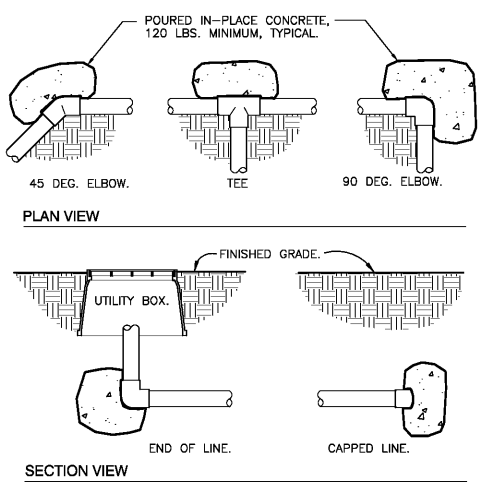


Sheet Set: 1560 PALM BEACH LAKES LAYOUT L2.10 IRRIGATION DETAILS August 02, 2017 03:53:21pm
 K:\eggs-civ\140336000 - 1560 palm beach lakes\CADD\Drawings\L2.10 IRRIGATION DETAILS.dwg
 1. The concepts and designs presented herein, as an instrument of service, is intended only for the specific purpose and client for which it was prepared. Reuse or modification of this document without written authorization and adaptation by Kimley-Horn and Associates, Inc. shall be without liability to Kimley-Horn and Associates, Inc.
 2. The contractor shall verify the accuracy of all field data and conditions before construction.
 3. The contractor shall verify the accuracy of all field data and conditions before construction.
 4. The contractor shall verify the accuracy of all field data and conditions before construction.
 5. The contractor shall verify the accuracy of all field data and conditions before construction.
 6. The contractor shall verify the accuracy of all field data and conditions before construction.
 7. The contractor shall verify the accuracy of all field data and conditions before construction.
 8. The contractor shall verify the accuracy of all field data and conditions before construction.
 9. The contractor shall verify the accuracy of all field data and conditions before construction.
 10. The contractor shall verify the accuracy of all field data and conditions before construction.



Order Plans @ WWW.KIMLEY-HORN.COM

Kimley-Horn	LICENSED PROFESSIONAL JONATHAN D. HAIGH DATE: AUGUST 2017 SCALE: AS SHOWN DESIGNED BY: SF DRAWN BY: SF CHECKED BY: JDH DATE: 08/02/2017		© 2017 KIMLEY-HORN AND ASSOCIATES, INC. 1615 S CONGRESS AVE., SUITE 201, DELRAY BEACH, FL 33445 PHONE: 386-350-2345 FAX: 386-363-8175 WWW.KIMLEY-HORN.COM CA 0000696		PPRC COMMENTS 2 PPRC COMMENTS 1 REVISIONS No.	DATE JDH JDH JDH	BY JDH JDH JDH
IRRIGATION DETAILS							
1560 PALM BEACH LAKES PREPARED FOR TRICOR INTERNATIONAL CORP. WEST PALM BEACH, FL							
SHEET NUMBER L2.10							